

Preparing your CATT II Diagnostic Tool

System Requirements

- Computer – Laptop computer (recommended) or PC in service/shop area with Internet connection
- Operating System - Windows XP (SP3), Windows 7, Windows 8, 4 G ram (min), dual core processor recommended.
- CatTracker access

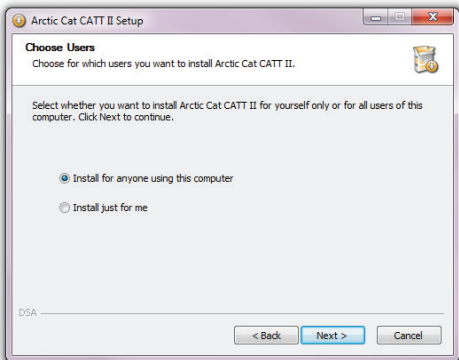
Note: Windows Vista will not be supported.

Software Install to Laptop

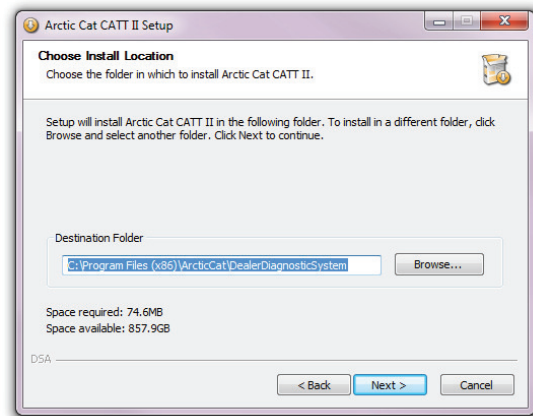
1. Log into CatTracker
2. Locate the CATT II link on CatTracker to install the software
3. When the install process has started, the Setup Wizard window will appear. Select the “Next >” button to begin.



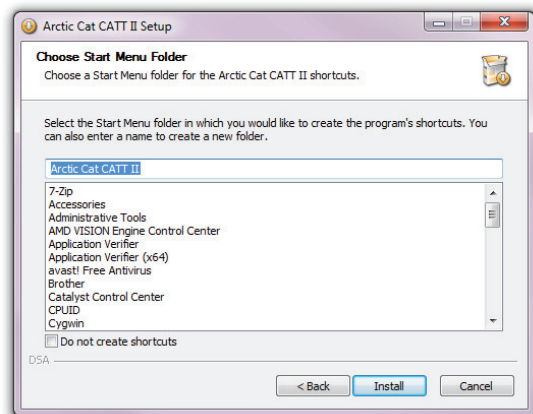
4. The next screen will ask which users to install to. Select one of the options and then select the “Next >” button to continue.



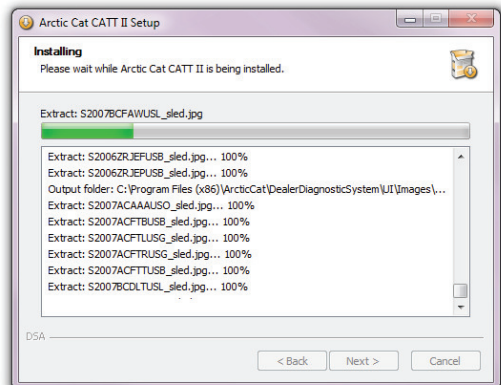
5. Now choose a location to install to. The default, recommended location will be displayed within the “Destination Folder” text box. Either accept this option, or select the “Browse...” button and select a different destination folder. Then select the “Next >” button to continue.



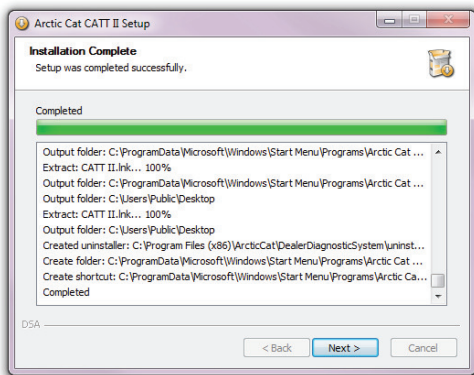
6. Next, choose a start menu folder for the Arctic Cat CATT II shortcuts. The window will default to creating a new folder called “Arctic Cat CATT II” as shown in the text box. Either accept this option and create a new folder, change the text and create a new folder with a different name, select a different folder from the list box, or click the “Do not create shortcuts” check box. Then select the “Install” button to continue.



7. The next screen will show the install progress. Wait while Arctic Cat CATT II installs.



8. Once the install process is complete the following screen will be shown. Select the “Next >” button to continue.



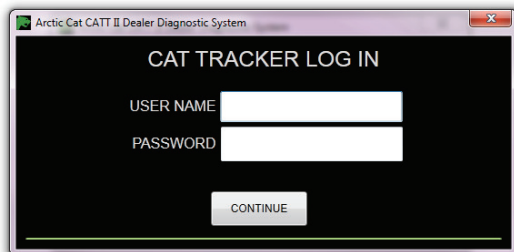
9. Finally, the Setup Wizard screen will be shown to confirm that Arctic Cat CATT II has been installed. Select the “Finish” button to close the Setup Wizard. The Arctic Cat CATT II application will launch automatically.



Logging In

Once the CATT II application is run, the following process is taken for logging in.

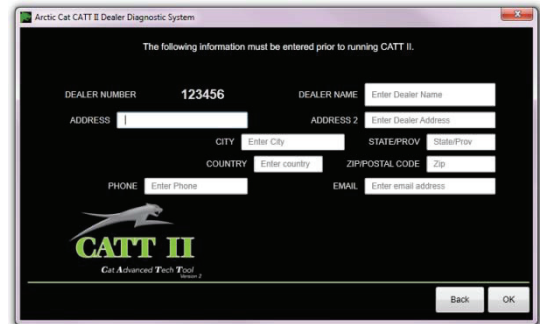
1. After the CATT II application has finished initializing, the following window will appear. Enter Cat Tracker user name and password and select the “CONTINUE” button.



2. Next, enter the dealer number and select the “Next” button to continue.



3. Finally, enter the information as prompted in the corresponding text boxes. Then select the “OK” button to finish the login process. If registered previously, the following information will be automatically populated. If the information populated is incorrect, the wrong dealer number may have been used. Click the “Back” button to go back and enter the correct dealer number. Otherwise make correct changes and click the “OK” button.



Updating the Software

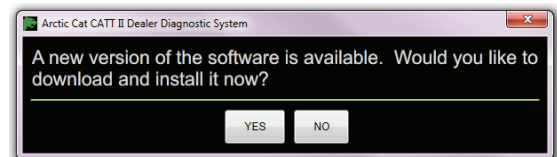
When starting up the Arctic Cat CATT II software, it will automatically check for updates. If an update is found, the following screen will be shown.

NOTE: Internet access is required to perform a software update. Arctic Cat recommends choosing “Yes” when a software update is available.

- 1.

Select either “YES” or “NO”.

If “NO” is selected, the update window will close and an update prompt will appear upon the next software run.



If “YES” is selected, the update will begin. Wait for the update to download.

Once the update is downloaded, the installation process will need to be performed again. The setup wizard will start automatically when the update has finished downloading. Refer to the “Installing the Software” portion of this manual for help reinstalling.

