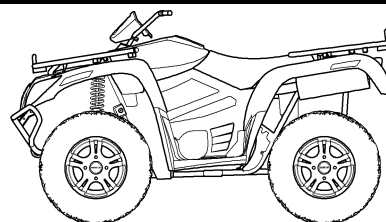


Arctic Cat® ATV

Installation Instructions - Accessory Kit

120" Folding Boom Kit (p/n 1436-606)



■ **NOTE:** Read these installation instructions thoroughly before beginning the installation process. Retain these Installation Instructions for future reference.

■ **NOTE:** If installing this kit as part of the Speedrack Sprayer w/Boom Kit (p/n 1436-680), discard this instruction and use the 1436-680 instruction.

Kit includes:

p/n	QTY	DESCRIPTION
2441-064	2	Spring
2441-037	3	Manifold Shutoff
2441-018	3	Hose Barb Cap (3/8)
2441-007	2	Clamp (1 1/4)
2441-008	4	Clamp (1)
2441-061	6	Spray Tip
2441-025	14	Hose Clamp (#4)
2441-043	6	Nozzle Gasket
2441-044	6	Nozzle Strainer
2441-017	1	Hinge Plate (Right)
2441-018	1	Hinge Plate (Left)
2441-070	1	Hose Barb Tee
2441-060	1	Spray Hose (3/8)
2441-041	4	Nozzle (Single)
2441-040	2	Nozzle (Double)
2441-042	6	Nozzle Cap
2441-009	2	Eye Bolt
2441-054	1	Plug (2-in.)
2441-053	4	Plug (1-in.)
2441-058	1	Riser Tube
2441-034	1	Main Frame
2441-006	1	Center Frame
2441-051	1	Outside Frame (Right)
2441-050	1	Outside Frame (Left)
2441-071	2	U-Bolt
2441-028	2	Lock Pin
2441-001	2	Bumper Guard
2441-004	2	Cap Screw (3/8 x 3 1/4)
2441-003	2	Cap Screw (3/8 x 2)
2441-013	8	Flat Washer (3/8)
2441-046	6	Nut (3/8)
2441-048	2	Nyloc Nut (3/8)
2441-002	2	Cap Screw (1/4 x 3 1/4)
2441-012	8	Flat Washer (1/4)
2441-029	6	Lock Washer (1/4)
2441-045	6	Nut (1/4)
0453-709	1	Instruction

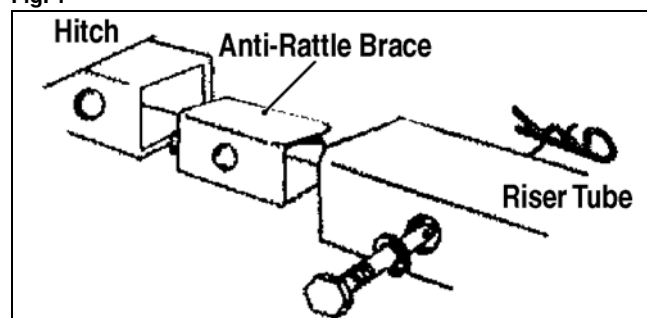
- Secure Main Frame to the riser tube using two Cap Screws (1/4 x 3 1/4), four Flat Washers, two Lock Washers (1/4), and two Nuts (1/4). Tighten securely.
- Secure Center Frame using two U-Bolts (tabs up), two flat washers, two lock washers (1/4) and two nuts (1/4) to the outside vertical tubes on the main frame. Tighten securely.
- Install left and right Hinge Plates using two Cap Screws (3/8 x 2) two flat washers, and two Nyloc Nuts. Tighten enough for parts to move freely.
- Secure Outside Frames to the bottom inside holes on the hinge plates using two Cap Screw (3/8 x 3 1/4), four flat washers (3/8), and two nyloc nuts (3/8).
- Install Eye Bolt on left and right end booms using two nuts (3/8); then install Spring from the eye bolt to the notched pin on the hinge plate on outside booms.
- Install a two inch Plug on top of riser tube and ends of the outside booms.
- Install two Single Nozzles on the center boom measuring 10 inches from left and right of center (20 inch spacing) and one Double Nozzle on both right and left boom measuring 20" from the nozzle body on the center boom. Install a single nozzle on the end of left and right boom at 20" spacing.

■ **NOTE:** Two Bumper Guards have been supplied for installation on only the outer two nozzles. Bumper guards are installed between the upper and lower nozzle clamps.

■ **NOTE:** Refer to illustrations on page 2 of this instruction for location of each component.

- Install Anti-Rattle Brace to the bottom end of Riser Tube; then mount the riser tube into receiver and secure using cap screw and pin. Tighten securely. See Fig. 1.

Fig. 1



ATV-

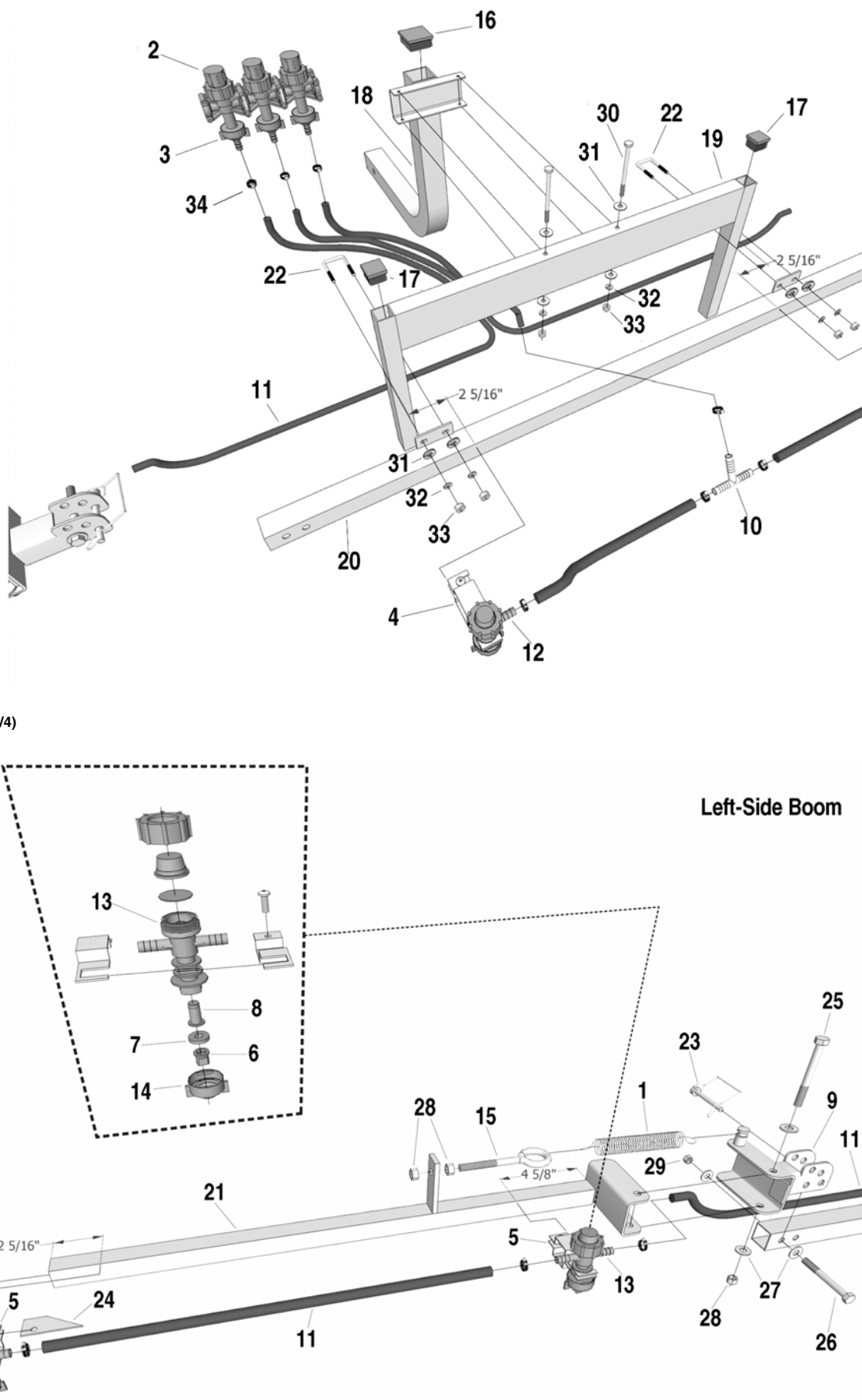
- Cut Spray Hose to two lengths of 64 inches (which connects the outer boom), one to 32 inches (which connects the center boom), and three to 19 inches (which connects nozzle to nozzle).

■ **NOTE:** Cut one of the 19 inch length hoses in half which will be connected using a Tee.

- Cut hose to fit from boom valve assembly to the inside double nozzle body on the left and right outside boom. Cut hose to fit from this nozzle to the end nozzle (20" spacing) on the wing ends.
- Use Hose Clamps to secure each hose connection to the barbed fittings.

Key

1. Spring
2. Manifold Shutoff
3. Hose Barb Cap
4. Clamp (1 1/4)
5. Clamp (1)
6. Spray Tip
7. Nozzle Gasket
8. Nozzle Strainer
9. Hinge Plate (Left)
- * Hinge Plate (Right)
10. Tee
11. Spray Hose
12. Nozzle (Single)
13. Nozzle (Double)
14. Nozzle Cap
15. Eye Bolt
16. Plug (2-in.)
17. Plug (1-in.)
18. Riser Tube
19. Main Frame
20. Center Frame
21. Outside Frame (Left)
- * Outside Frame (Right)
22. U-Bolt
23. Lock Pin
24. Bumper Guard
25. Cap Screw (3/8 x 3 1/4)
26. Cap Screw (3/8 x 2)
27. Flat Washer (3/8)
28. Nut (3/8)
29. Nyloc Nut (3/8)
30. Cap Screw (1/4 x 3 1/4)
31. Flat Washer (1/4)
32. Lock Washer (1/4)
33. Nut (1/4)
34. Hose Clamp
- * Not Shown



SAFETY PRECAUTIONS

- Product knowledge is the first step to safety.
- Read all instructions carefully.
- Always wear protective equipment when handling dangerous chemicals.
- Never let children operate sprayer or handle chemicals.
- Repair any loose or leaking fittings and hoses immediately.
- Avoid spraying in windy conditions.
- Never use sprayer for anything other than its original intentions.
- Follow applications and rate charts carefully.
- For precautionary reasons, know first aid treatments for any dangerous material you may handle.

WARNING

Take all necessary precautions when handling chemicals. Wear coveralls, safety vest, boots, hat, gloves, respirator, and goggles. Wash coveralls, etc., daily. DO NOT spray upwind or on windy days. Avoid waste of chemicals.

- Flush unit with clean water and ammonia after every use.
- Never leave chemical or water in tank after use.

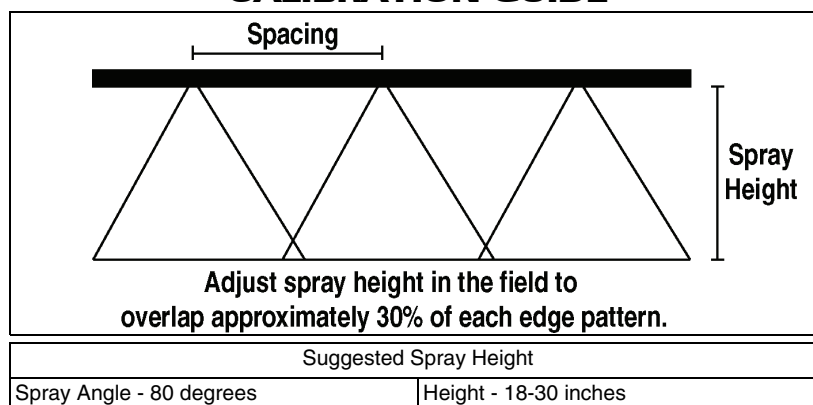
■ **NOTE: Freezing will cause cracking of components.**

To winterize, do the following:

1. Drain all water from tank by removing flush plug.
2. Remove hoses from pump.
3. Remove nozzle caps and loosen diaphragms.
4. Remove and drain filter bowl.
5. Disconnect hoses from valve bodies.
6. Pump RV antifreeze through the sprayer.

■ **NOTE: Antifreeze may be left in the sprayer over the winter. This will not damage the sprayer.**

CALIBRATION GUIDE



Tip Color	Tip No.	Pressure PSI	Flow Rate GPM	Gallons per acre at 18- 20 in. spacing			
				5 mph	6 mph	7 mph	8 mph
Green	80015	15	.09	5.5	4.5	3.9	3.4
		20	.11	6.3	5.3	4.5	3.9
		30	.13	7.7	6.4	5.5	4.8
		40	.15	8.9	7.4	6.4	5.6
Yellow	8002	15	.12	7.3	6.1	5.2	4.5
		20	.14	8.4	7.0	6.0	5.3
		30	.17	10.3	8.6	7.4	6.4
		40	.20	11.9	9.9	8.5	7.4

STEP 1 INPUTS

Before spraying, record the following (Example)

Nozzle type.....8002

Recommended application volume.....10 GPA

Sprayer speed.....6 MPH

Nozzle spacing.....20 inches

STEP 2

Setting the correct pressure

Turn on the sprayer and check for leaks or blockage. Inspect and clean, if necessary.

Check appropriate tip selection table and determine the pressure required to deliver desired gallon per acre rates.

Turn on sprayer and adjust pressure using the pressure regulating valve to the correct setting shown on tip selection table.