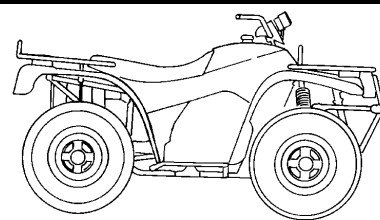


Arctic Cat® ATV

Installation Instructions - Accessory Kit

Engine Heater Kits (p/n 1436-035 and 1436-036)



■ **NOTE:** Read these installation instructions thoroughly before beginning the installation process. Retain these Installation Instructions for future reference.

Application:
2007 700 Diesel (U.S.)

Kit (p/n 1436-035) includes:

p/n	QTY	DESCRIPTION
0609-182	1	Engine Heater w/Heater Cord
0214-015	2	Hose Clamp
0123-788	4	Cable Tie
0453-463	1	Instructions

2007 700 Diesel (Over Seas)

Kit (p/n 1436-036) includes:

p/n	QTY	DESCRIPTION
0609-563	1	Engine Heater
0609-609	1	Heater Harness (Connecting Lead)
0609-608	1	Outlet Cord
0214-015	2	Hose Clamp
0123-788	4	Cable Tie
0623-038	1	Hex Nut (6 mm)
8476-612	1	Machine Screw
0453-463	1	Instructions

Installing Engine Heater

1. Allow the engine and exhaust system to cool; then clean the installation area before beginning this installation.

WARNING

Allow the ATV engine to cool before beginning the installation. Contact with hot components can cause severe burns. Always wear proper eye protection.

2. Place the ATV on an ATV lift/stand and elevate; then remove the front left tire and the left splash panel. Retain all hardware.
3. Have readily available a funnel and container for the coolant which will be drained from the cooling system in step 4.
4. Slowly remove the radiator cap; then remove the clamp securing the top of the bypass hose to the engine. Remove the hose and allow the cooling system to drain.
5. Using a suitable crimping tool, crimp the bypass hose and move the hose aside.
6. Using a grease pencil, make a mark on the coolant hose approximately 12.7 cm (5 in.) between the first and second bend on the hose.
- 7a. For Kit (p/n 1436-035), make a mark 1.9 cm (3/4 in.) on each side of the original mark. See Fig. 1.

Fig. 1



ATV-144

- 7b. For Kit (p/n 1436-036), make a mark 2.54 cm (1 in.) on each side of the original mark. See Fig. 1.

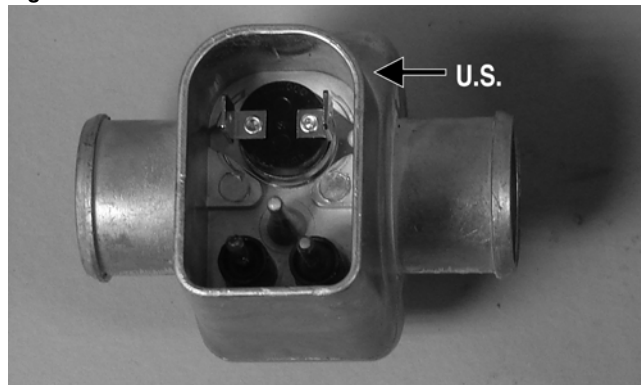
8. Cut the hose at the two outside marks.

■ **NOTE:** It is not necessary to remove the hose in order to make the cuts.

9. Lubricate the cut end of the hose nearest to the engine with water; then slide a Hose Clamp onto the hose. Insert the Engine Heater into the engine side of the hose.

■ **NOTE:** When installing Kit (p/n 1436-035), make sure that the rounded section at the top of the heater faces toward the inside of the ATV and is positioned away from any moving parts. See Fig. 2.

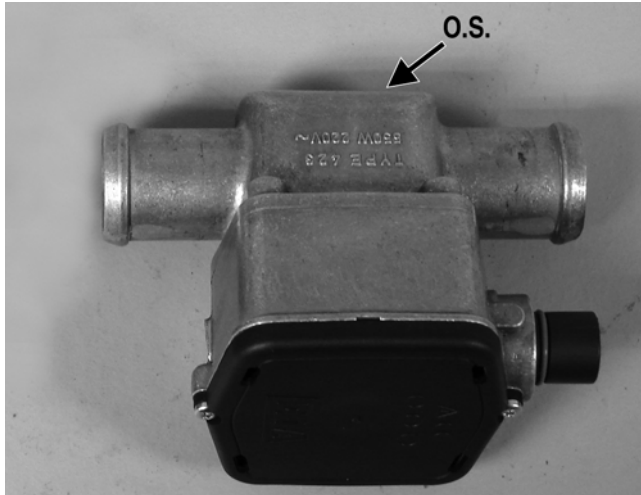
Fig. 2



ATV-145A

■ **NOTE:** When installing Kit (p/n 1436-036), make sure the top black cover on the heater faces outward. It is very important that the heater is mounted correctly. Failure to do so will result in damage to the heater coils. See Fig. 3 and 4.

Fig. 3



ATV-146A

Fig. 4



ATV-147

10. Lubricate the cut end of the hose nearest the radiator with water; then place a Hose Clamp onto the hose. Insert the Engine Heater into the hose.
11. Making sure the heater is completely seated on each section of hose, secure the heater with the clamps.
- 12a. For Kit (p/n 1436-035), plug the heater cord (included with heater) into the heater socket making sure it is completely seated.
- 12b. For Kit (p/n 1436-036), plug the Heater Harness into the heater socket making sure it is completely seated. Secure the ground wire to the hole located on the bumper channel using the Machine Screw and Hex Nut.

13. Route the heater cord or Heater Harness downward to the cross brace on the A-arm frame tube. Route the cord forward along this cross brace to the bumper support. Place the cord in the bumper support channel and continue routing the cord to the front of the ATV. Secure the cord with Cable Ties as needed.

■ **NOTE:** Be sure the heater cord or heater harness cord is secured away from hot or moving parts and that it will not interfere with the proper operation of the ATV.

14. Install the bypass hose to the engine using existing clamp.
15. Install the splash panel and tire.
16. Fill the cooling system with an appropriate amount of coolant. Refer to the Arctic Cat 700 Diesel Service Manual for specific instructions.
17. Operate the ATV and check for any leaks in the cooling system.

Operating Engine Heater

1. Place the ATV on a level surface; then connect the heater cord to a properly grounded 110 (U.S.) or 220 (O.S.) volt AC outlet.



WARNING

Always connect heater to a properly grounded 120 or 220 volt AC outlet. The ATV should always on a level surface while heater is in use.

■ **NOTE:** Placing the ATV on a level surface ensures the heated coolant will flow naturally through the system. Improper angles can affect the natural flow of heated coolant and its ability to warm the engine.

2. Allow 2-4 hours for the heater to reach its peak temperature.

■ **NOTE:** The heater is thermostatically controlled and can be plugged in overnight.



WARNING

Avoid contact with the heater housing since the heater housing becomes extremely hot while plugged in or during ATV use and may cause serious burns to skin.

