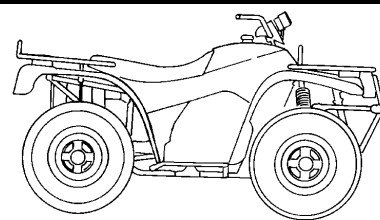


Arctic Cat® ATV

Installation Instructions - Accessory Kit

Backrest Kit (p/n 1436-050)



■ **NOTE:** Read these installation instructions thoroughly before beginning the installation process. Retain these Installation Instructions for future reference.

Application: 2005-2007 Speedrack models

Kit includes:

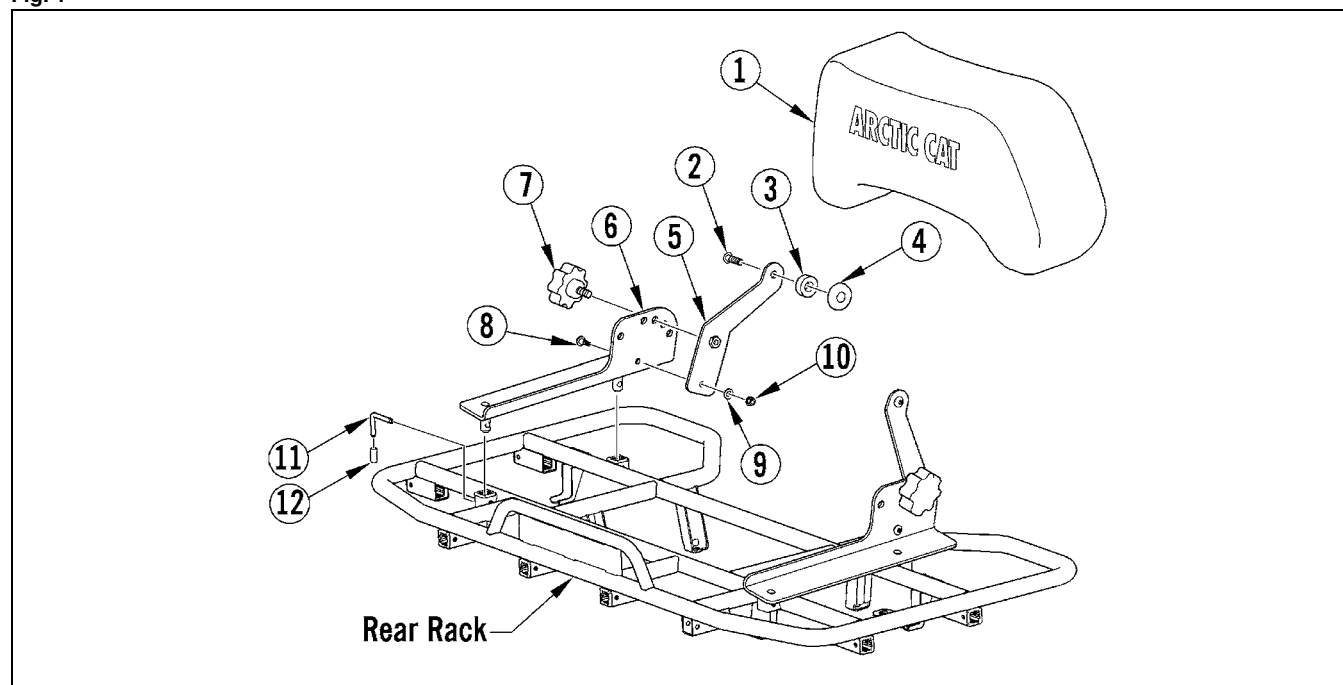
Ref. No.	p/n	QTY	DESCRIPTION
1	0506-912	1	Backrest Assembly w/Logo
2	0623-566	2	Machine Screw (3/8-16 x 1 1/4 in.)
3	0616-547	2	Backrest Tension Block
4	0723-003	2	Cup Washer
5	0541-400	2	Backrest Bracket
6	0541-613	1	Mounting Bracket (Left Side)-Backrest
7	0541-612	1	Mounting Bracket (Right Side)-Backrest
8	1441-327	2	Retainer Knob
9	0423-356	2	Shoulder Screw (6 mm)
10	0423-472	2	Flat Washer (8 mm)
11	0423-540	2	Flange Lock Nut (6 mm)
12	0541-447	4	Pin (Stainless Steel)
13	1441-317	4	Cap (1/4 x 13/16 in.)
14	0453-469	1	Instructions

1. Insert the Mounting Bracket into the right-side pockets on the existing rear rack; then secure with two Pins. Install a Cap onto the end of each pin. See Fig. 1.
2. Insert the mounting bracket into the left-side pockets on the existing rear rack; then secure with two Pins. Install a Cap onto the end of each pin.

3. With the Backrest Bracket positioned on the inside of the mounting bracket, align the bottom mounting hole in each bracket. From outside the mounting bracket, insert a Shoulder Screw through the mounting holes. Loosely secure with a Flat Washer and Flange Lock Nut.
4. Loosely secure the center of the backrest bracket to one of the upper mounting holes in the mounting bracket with Retainer Knob. See Fig. 1 for orientation of components.
5. Repeat for opposite side making sure to use corresponding mounting holes to allow for proper alignment when installing the backrest.
6. Secure the backrest to each of the backrest brackets with a 3/8 in. Machine Screw, Tension Block, and Cup Washer. Tighten securely. See Fig. 1 for positioning of components.
7. Adjust the backrest to the desired position by removing the retainer knobs; then move the bracket to the desired mounting hole location. Reinstall retainer knobs. Be sure to tighten all hardware securely.

■ **NOTE:** Periodically check all mounting hardware.

Fig. 1



0742-426