

ATV TRACK KIT

**Operator's Manual
Installation Instructions
Service Instructions
Replacement Parts List**

- Track Assembly Kits (p/n 1436-204)
- Mounting Assembly Kits (p/n 1436-205)



Effective Date: April, 2009

ARCTIC CAT[®]
SHARE OUR PASSION.[™]

LIMITED WARRANTY

Arctic Cat Inc. (hereinafter referred to as Arctic Cat) extends a limited warranty on each new Arctic Cat ATV Track Kit sold and initially set up/installed by an authorized Arctic Cat ATV dealer. Arctic Cat warrants that the product is free from defects in materials and workmanship for a period of one (1) year from the date of purchase by the original purchaser.

Arctic Cat warrants only the products it manufactures and/or sells and does not warrant that other products will function properly when used with an Arctic Cat ATV or will damage the ATV. Arctic Cat does not assume any liability for incidental or consequential damages.

Arctic Cat will repair or replace, at its own option, any parts that are found to be warrantable in material or workmanship. The repair work **MUST** be done by an authorized Arctic Cat ATV dealer. No transportation charges will be paid by Arctic Cat. Warranty applies only to products which have been properly assembled, adjusted, and operated in accordance with the instructions sent with the product. Warranty does not apply to any product of Arctic Cat that has been subject to alteration, misuse, abuse, improper assembly or installation, normal wear, or normal maintenance. The warranty is validated upon examination of said parts by Arctic Cat or an authorized Arctic Cat ATV dealer. Arctic Cat reserves the right to inspect such parts at its factory for final determination if warranty should apply.

In consideration of the foregoing, any implied warranty is limited in duration to the various warranty periods set forth. This warranty gives you specific legal rights, and you may also have other rights which vary from state to state or country to country. Some states do not allow limitations on how long an implied warranty lasts, so the above limitations may not apply to you.



The Safety Alert Symbol means **ATTENTION! BE ALERT! YOUR SAFETY IS INVOLVED.**

⚠ **WARNING**

Failure to follow **WARNING** instructions could result in severe injury or death to the ATV operator, a bystander, or a person inspecting or repairing the ATV.

⚠ **CAUTION**

A **CAUTION** indicates special precautions that must be taken to avoid damage to the ATV and/or the Tracks.

■ **NOTE:**

A **NOTE** provides key information to make procedures easier or more clear.

Table of Contents

Safe Operating Practices	1
Service Parts	2
Installation/Adjustment Instructions	6
Installing New A-Arm Brace	6
Installing Front Track Kit	6
Installing Rear Track Kit	7
Adjusting Front Track	9
Adjusting Rear Track	10
Installing Snow Deflector Panels	10
Operation	11
Service	11
Maintenance	11
Replacing Track	11
Replacing Sprocket and Main Axle	12
Replacing Wheels (Large)	13
Replacing Wheels (Small External)	14
Replacing Wheels (Small Internal)	14
Replacing Tensioner Pivot	14
Replacing Main Axle Bearing and Seal	15
Replacing Frame	15
Replacing Anti-Rotational Device (Front)	15
Replacing Anti-Rotational Device (Rear)	16
Preparation for Storage	16
Preparation after Storage	16
How to Order Service Parts	16
Owner Registration	17

Safe Operating Practices

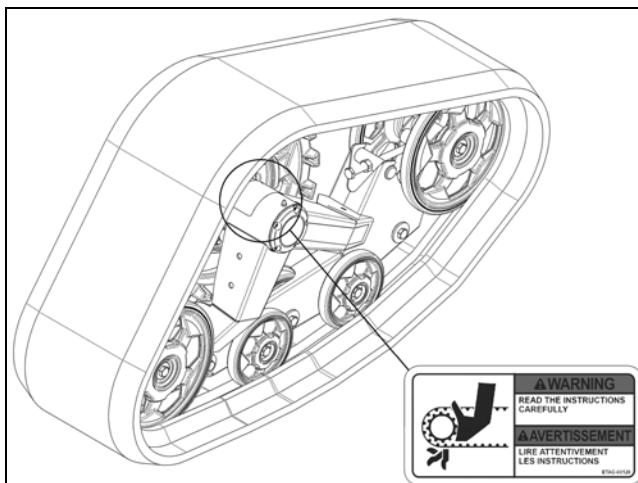
⚠ **WARNING**

Failure to observe the following safety instructions could result in serious injury and/or death.

General Operation

■ **NOTE:** The track kit raises the center of gravity of the ATV and improves the traction; however, added caution is recommended while operating the vehicle.

1. Read the operating and servicing instructions in this manual carefully.



ATV-1151

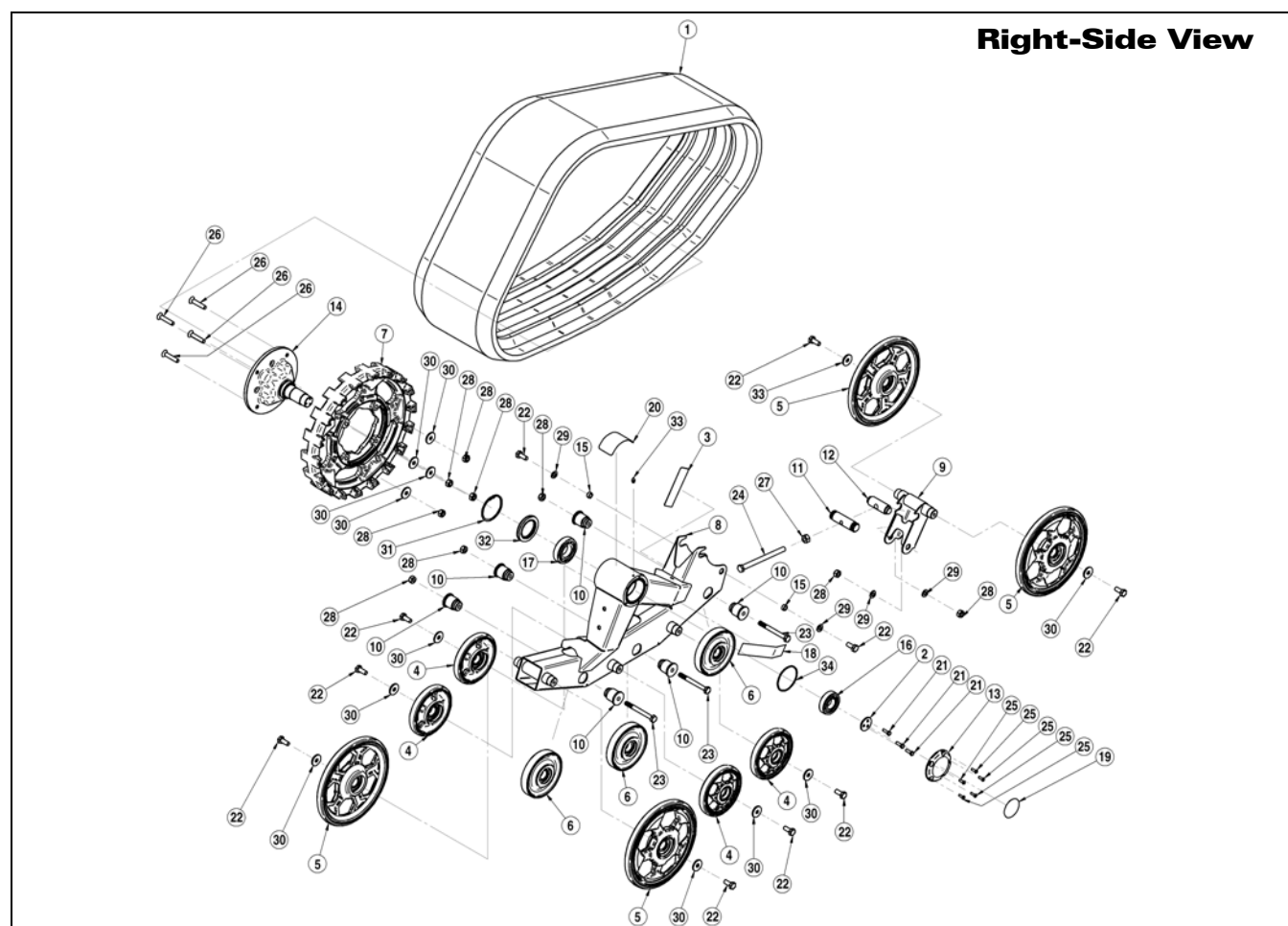
2. Read the ATV Operator's Manual carefully.
3. Be thoroughly familiar with the controls and the proper use of the ATV with this equipment.
4. Only allow responsible adults, who are familiar with the instructions, to operate the ATV with this equipment. Never allow children to operate the ATV.
5. **NEVER CARRY PASSENGERS** while operating the ATV with this equipment unless yours is a two-up ATV.
6. When cleaning, repairing, or inspecting, make certain that all moving parts have stopped. Shut off the engine.
7. Exercise extreme caution when crossing over obstacles larger than 30 cm (12 in.). The obstacle may get stuck between the tracks.
8. Beware of hidden and/or underground objects such as logs, branches, and fences. Contact with hidden objects might cause sudden stop of ATV and damage to the tracks.
9. Do not operate the ATV if the tracks have been damaged in any way. Inspect and repair as necessary.
10. Check all fasteners at frequent intervals for tightness to be sure the equipment is in safe operating condition.
11. Maintain or replace safety and instruction labels as necessary.

Service Parts

Front Track Kit Assembly (p/n 0541-792) - Right (p/n 0541-793) - Left

■NOTE: The Qty column reflects the total number of components in both kits.

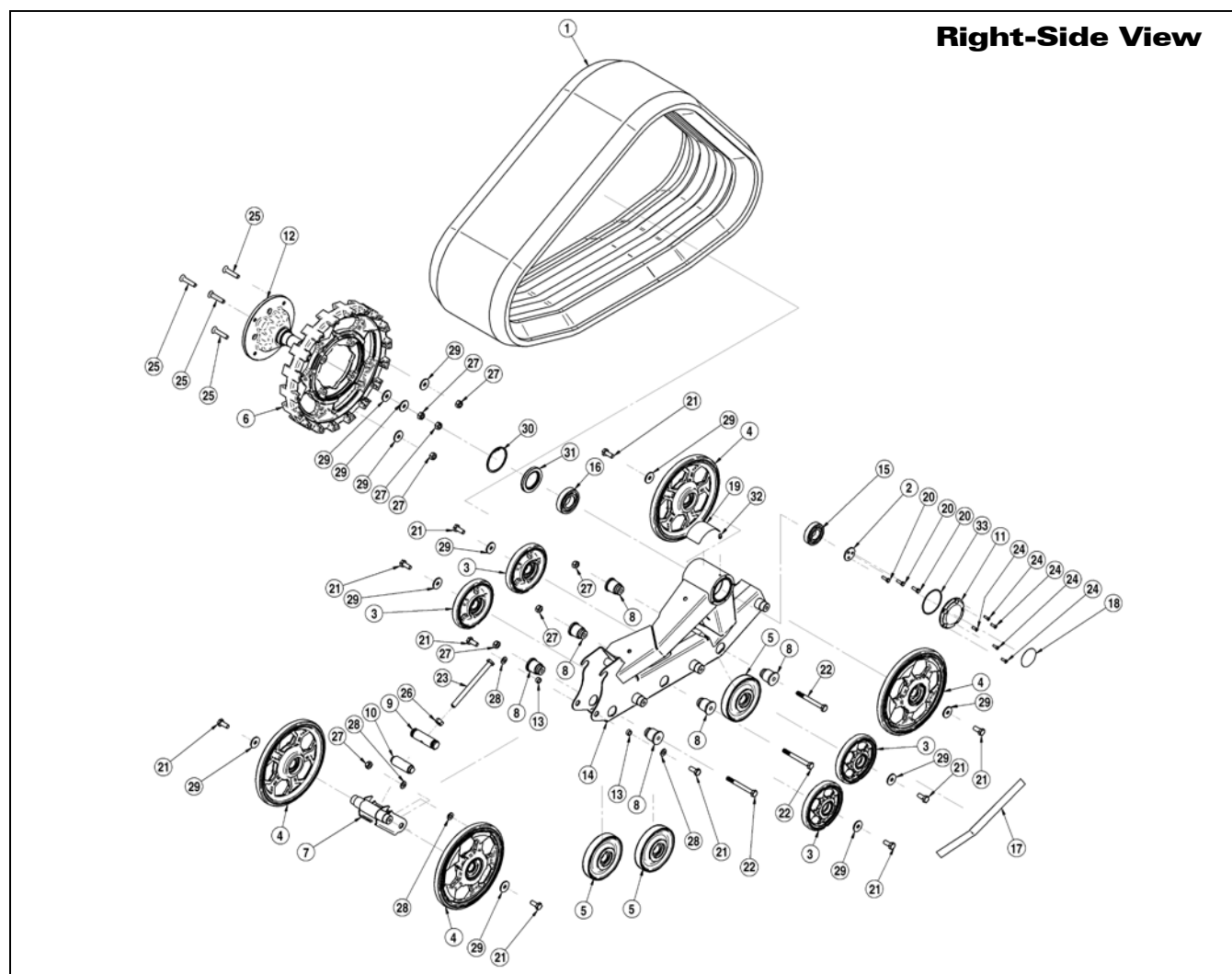
Ref. No.	p/n	Qty	Description	Ref. No.	p/n	Qty	Description
1	0541-758	2	Track	18	2411-084	1	Decal (Right-Side Front)
2	0423-947	2	Lock Washer		2411-085	1	Decal (Left-Side Front)
3	2411-082	1	VIN Plaque (Arctic Cat)	19	2411-086	1	Decal (Right-Side)
4	0541-815	8	Wheel w/o Rubber (5.66-in.)		2411-087	1	Decal (Left-Side)
5	0541-816	8	Wheel (10-in.)	20	2411-083	2	Decal (Warning)
6	0541-817	6	Wheel w/Rubber (5.66-in.)	21	0423-955	6	Hex Bolt (1.0 x 20 mm)
7	1441-864	2	Sprocket (Arctic Cat)	22	0423-956	20	Hex Bolt w/Nylon Patch (1.5 x 25 mm)
8	0541-800	1	Track Chassis (Right-Side Front)	23	0423-957	6	Hex Bolt (1.5 x 100 mm)
	0541-801	1	Track Chassis (Left-Side Front)	24	0423-958	2	Hex Bolt (1.75 x 160 mm)
9	0541-818	2	Tensioner Pivot	25	0423-959	10	Socket Head Cap Screw (0.8 x 16 mm)
10	1441-865	12	Wheel Axle (Inside)	26	0423-960	8	Socket Head Cap Screw (1.5 x 50 mm)
11	1441-866	2	Adjustment Axle (Threaded)	27	0423-961	2	Hex Nut
12	1441-867	2	Adjustment Axle	28	0423-962	18	Hex Nut
13	1441-868	2	Bearing Cover	29	0423-963	8	Flat Washer
14	0541-819	2	Wheel Hub	30	0423-964	24	Washer (Fender)
15	1441-869	4	Spacer (10.5 mm I.D.)	31	0423-965	2	Circlip (Internal)
16	0423-953	2	Ball Bearing	32	0423-966	2	Seal
17	0423-954	2	Ball Bearing	33	0423-967	2	Grease Fitting
				34	0423-968	2	O-Ring



Rear Track Kit Assembly (p/n 0541-794) - Right (p/n 0541-795) - Left

■NOTE: The Qty column reflects the total number of components in both kits.

Ref. No.	p/n	Qty	Description	Ref. No.	p/n	Qty	Description
1	0541-758	2	Track	18	2411-086	1	Decal (Right-Side)
2	0423-947	2	Lock Washer		2411-087	1	Decal (Left-Side)
3	0541-815	8	Wheel w/o Rubber (5.66-in.)	19	2411-083	2	Decal (Warning)
4	0541-816	8	Wheel (10-in.)	20	0423-955	6	Hex Bolt (1.0 x 20 mm)
5	0541-817	6	Wheel w/Rubber (5.66-in.)	21	0423-956	20	Hex Bolt w/Nylon Patch (1.5 x 100 mm)
6	1441-864	2	Sprocket (Arctic Cat)	22	0423-957	6	Hex Bolt (1.5 x 100 mm)
7	0541-818	2	Tensioner Pivot	23	0423-958	2	Hex Bolt (1.75 x 160 mm)
8	1441-865	12	Wheel Axle (Inside)	24	0423-959	10	Socket Head Cap Screw (0.8 x 16 mm)
9	1441-866	2	Adjustment Axle (Threaded)	25	0423-960	8	Socket Head Cap Screw (1.5 x 50 mm)
10	1441-867	2	Adjustment Axle	26	0423-961	2	Hex Nut
11	1441-868	2	Bearing Cover	27	0423-962	18	Hex Nut
12	0541-819	2	Wheel Hub	28	0423-963	8	Flat Washer
13	1441-869	4	Spacer (10.5 mm I.D.)	29	0423-964	24	Washer (Fender)
14	0541-802	1	Track Chassis (Right-Side - Rear)	30	0423-965	2	Circlip (Internal)
	0541-803	1	Track Chassis (Left-Side - Rear)	31	0423-966	2	Seal
15	0423-953	2	Ball Bearing	32	0423-967	2	Grease Fitting
16	0423-954	2	Ball Bearing	33	0423-968	2	O-Ring
17	2411-085	1	Decal (Left-Side Front)				
	2411-084	1	Decal (Right-Side Front)				

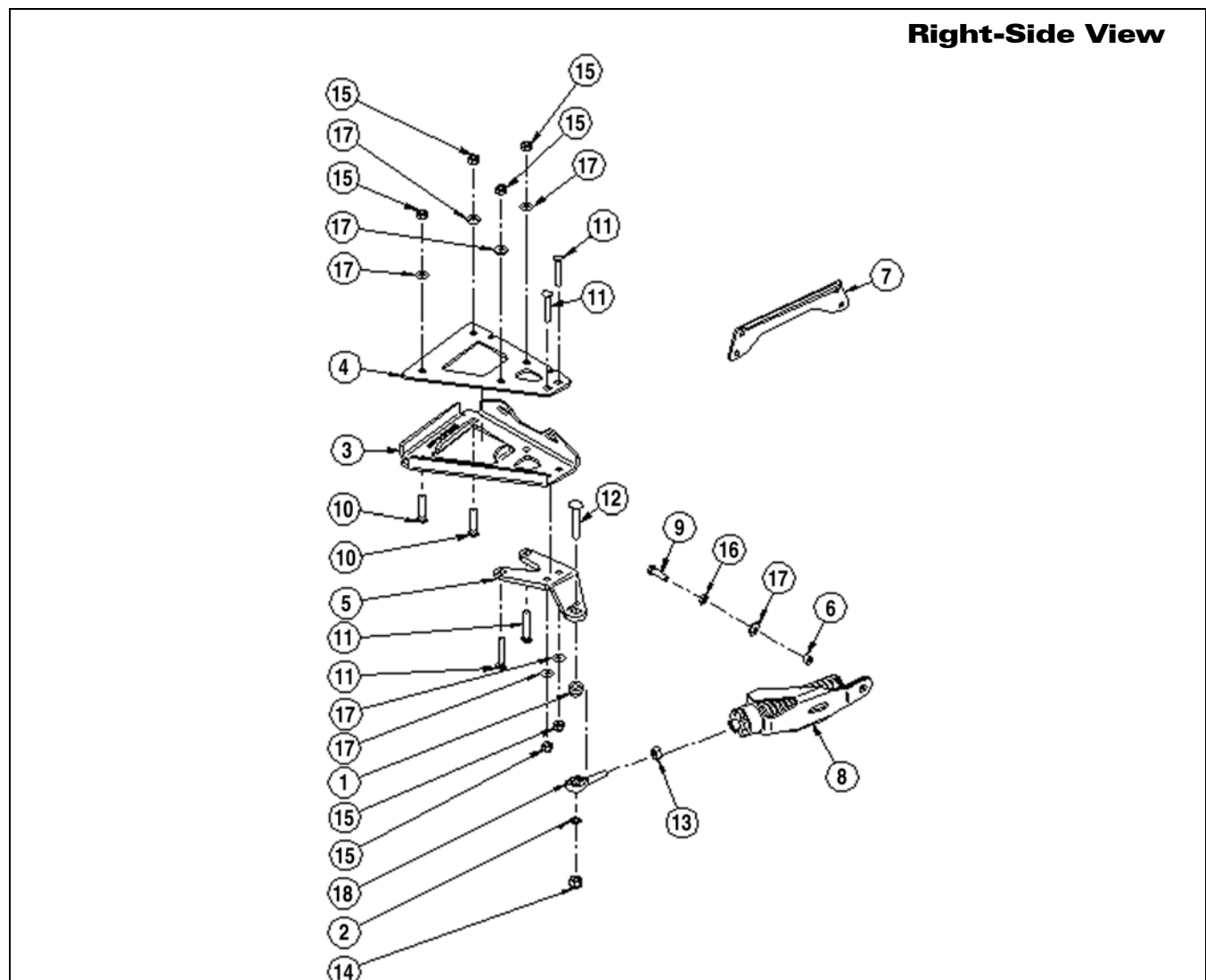


Front Mounting Bracket Kit Assembly **(p/n 0541-796) - Right** **(p/n 0541-797) - Left**

■NOTE: The Qty column reflects the total number of components in both kits.

Ref. No.	p/n	Qty	Description	Ref. No.	p/n	Qty	Description
1	1441-870	2	Spacer (Thick) - Ball Joint	11	0423-971	8	Carriage Bolt (60 mm)
2	1441-871	2	Spacer (Thin) - Ball Joint	12	0423-972	2	Carriage Bolt (2 3/4 in.)
3	0541-804	1	Mount (Right-Side)	13	0423-974	2	Hex Nut
	0541-805	1	Mount (Left-Side)	14	0423-975	2	Lock Nut (Nylon)
4	0541-810	2	Mount Plate (Upper)	15	0423-977	12	Lock Nut (Nylon)
5	0541-808	1	Plate (Right-Side) - Ball Joint	16	0423-978	2	Lock Washer
	0541-809	1	Plate (Left-Side) - Ball Joint	17	0423-979	14	Flat Washer
6	1441-875	2	Spacer	18	0423-982	2	Ball Joint
7	0541-811	1	Frame Bracket	*	8428-002	4	Hex Flange Lock Nut
8	0541-814	2	Anti-Rotational Device Bracket	*	1441-878	2	Snow Deflector Panel - Front
9	0423-969	2	Hex Bolt (35 mm)	*	1441-879	2	Snow Deflector Panel - Rear
10	0423-970	4	Carriage Bolt (50 mm)	*	0623-144	26	Cable Tie

* Not shown in illustration



ATV-1169

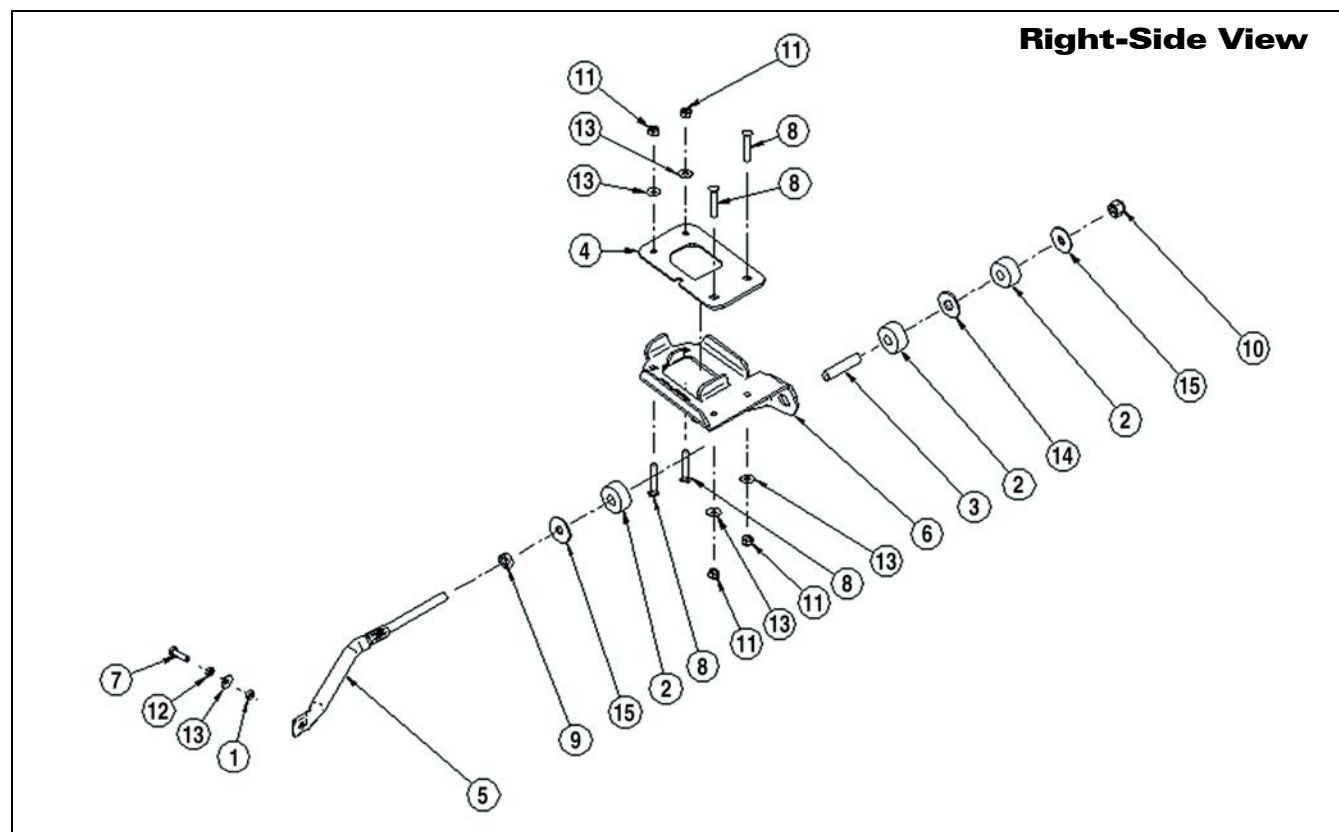
Rear Mounting Bracket Kit Assembly

(p/n 0541-798) - Right

(p/n 0541-799) - Left

■NOTE: The Qty column reflects the total number of components in both kits.

Ref. No.	p/n	Qty	Description	Ref. No.	p/n	Qty	Description
1	1441-872	2	Spacer	8	0423-971	8	Carriage Bolt (60 mm)
2	1441-873	6	Bushing	9	0423-973	2	Hex Nut
3	1441-874	2	Spacer Tube	10	0423-976	2	Lock Nut (Nylon)
4	0541-812	2	Mount Plate (Upper)	11	0423-977	8	Lock Nut (Nylon)
5	0541-813	2	Tube (Anti-Rotational)	12	0423-978	2	Lock Washer
6	0541-806	2	Mount (Right-Side)	13	0423-979	10	Flat Washer
	0541-807	2	Mount (Left-Side)	14	0423-980	2	Flat Washer (3/4-in. I.D.)
7	0423-969	2	Hex Bolt (35 mm)	15	0423-981	4	Flat Washer (17 mm I.D.)



ATV-1170

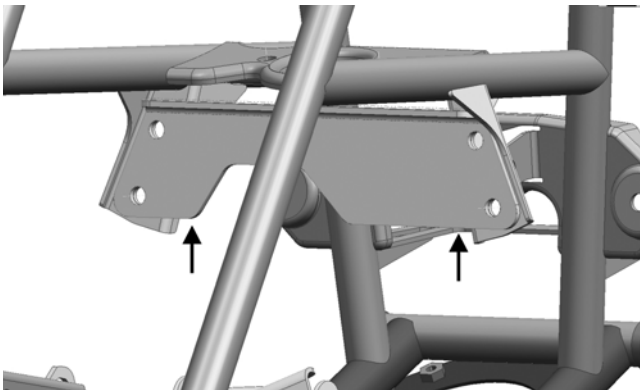
Installation/Adjustment Instructions

■NOTE: See an authorized Arctic Cat ATV dealer for the required Clutch Kit (p/n 1436-332 - 650/700 models) or Clutch Kit (p/n 1436-333 - 1000 model).

Installing New A-Arm Brace (p/n 0541-713)

1. Remove the existing A-arm brace. Retain the cap screw and discard the nut.
2. Remove cap screw from the upper A-arm. Retain the cap screw and discard the nut.
3. Install the new A-Arm Brace.

■NOTE: The flange faces to the rear of the ATV.



4. Insert upper suspension cap screw and nut. Tighten hardware removed in steps 1-2 to 35 ft-lb using nut supplied in kit.

Installing Front Track Kit

■NOTE: For a complete illustration and list of components, see page 2 of this manual. This procedure is appropriate for both front wheel kits.

1. Remove the components from the shipping package; then verify that there are no missing or damaged components. See bill of materials for list of parts included in kit.
2. Place the ATV on a flat surface, block the rear wheels (if applicable), and raise the front of the ATV using a support stand.

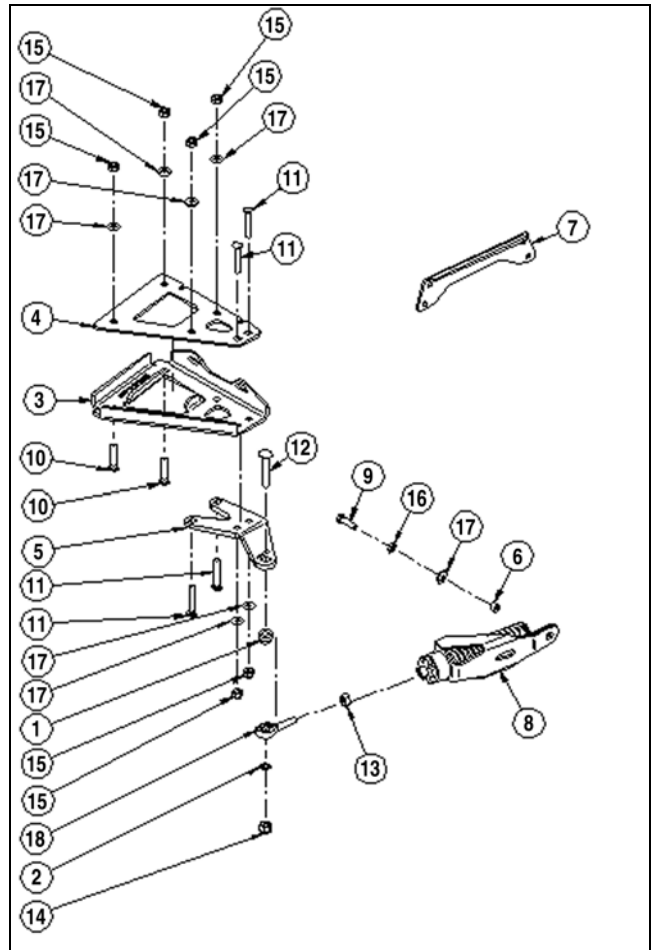
WARNING

Make sure the ATV is solidly supported on the support stand to avoid injury.

3. Remove the front wheel; then remove the front boot guard. Do not discard the boot guard.

4. Install the front A-arm bracket and the anti-rotational device on the front suspension A-arm using the following procedure.

A. Place the mount plate into position on top of the lower A-arm; then install two 60 mm carriage bolts into the top square holes of the plate.



B. Insert a 2 3/4-in. carriage bolt into the lower hole of the ball joint plate.

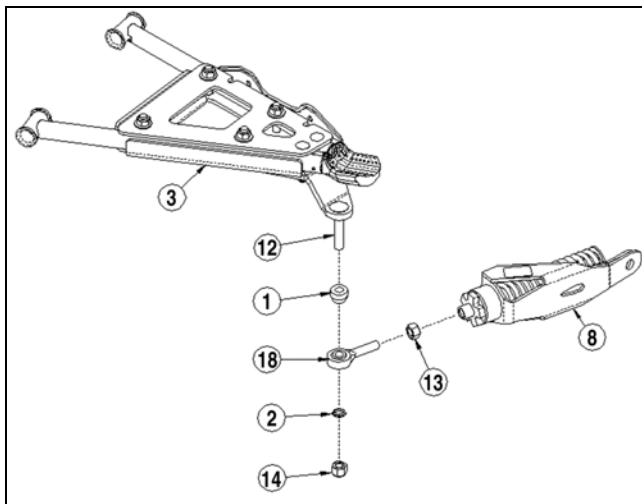
C. Place the mount and mount plate into position beneath the lower A-arm; then secure to the mount plate with two 50 mm carriage bolts (inserted from the bottom of the mount), flat washers, and nylon lock nuts. Only finger-tighten the nuts at this time.

D. Install two 60 mm carriage bolts (inserted from the bottom of the ball joint plate), flat washers, and nylon lock nuts. Only finger-tighten the nuts at this time.

E. Install two flat washers and nylon lock nuts onto the two 60 mm carriage bolts (from step A). Only finger-tighten the nuts at this time.

F. Tighten all nylon lock nuts to 22 ft-lb using a crisscross pattern.

G. Attach the ball joint to the anti-rotational device and lock it in place with the hex nut.



ATV-1175

H. Place the thick spacers onto the carriage bolt (from step B); then place the ball joint, thin spacer, and nylon lock nut onto the bolt. Tighten the nylon lock nut to 55 ft-lb.

⚠ CAUTION

Do not over-tighten the bolt when installing the device. Some components may deform and may affect security features.

- At this point, rotate the anti-rotational device toward the center of the ATV to prevent it from interfering when installing the track kit.



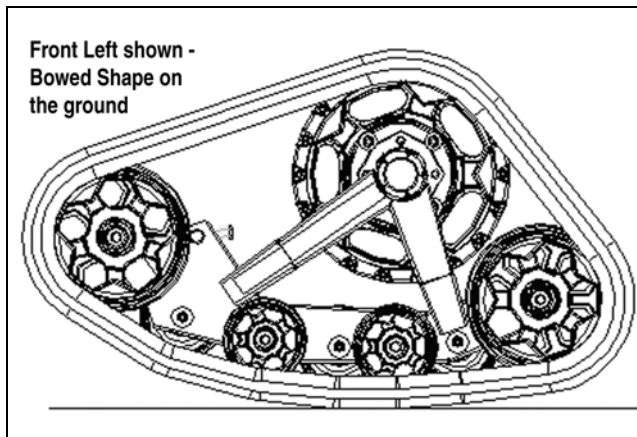
ATV-1148

- Install the front pre-assembled track kit on the front hub; then secure with original lug nuts. Tighten lug nuts to 40 ft-lb.

■NOTE: For vehicles with aluminum wheels, use nuts from Lug Nut Kit (p/n 1436-206).

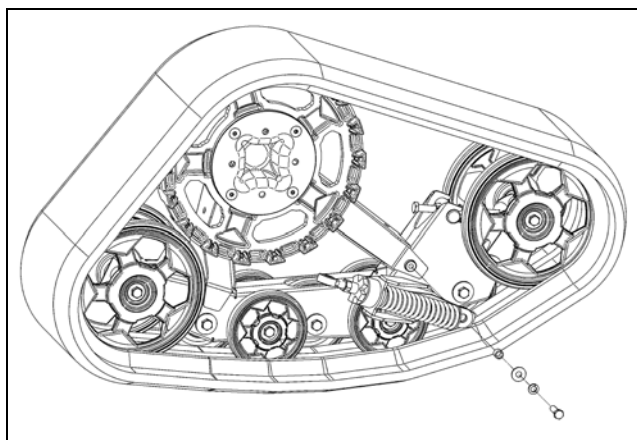
⚠ CAUTION

Care must be taken that the front left track kit is installed on the left side and the front right track kit is installed on the right side (see color-coded sticker for proper identification).



ATV-1171A

- Rotate the anti-rotational device until the hole in the extremity is aligned with the hole in the frame; then secure with the hex bolt (threads coated with blue Loctite #242), lock washer, flat washer, and spacer. Tighten to 31 ft-lb.



ATV-1149

- Install the existing boot guard using existing hardware.

Installing Rear Track Kit

■NOTE: For a complete illustration and list of components, see page 3 of this manual. This procedure is appropriate for both rear wheel kits.

- Remove the components from the shipping package; then verify that there are no missing or damaged components. See bill of material for list of parts included in kit.
- Place the ATV on a flat surface, block the front wheels (if applicable), and raise the rear of the ATV using a support stand.

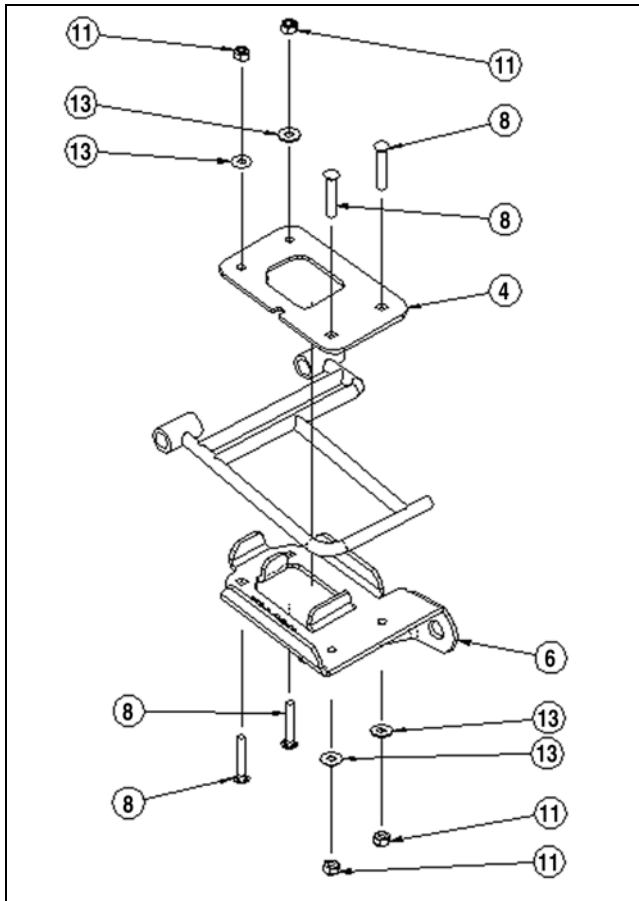
⚠ WARNING

Make sure the ATV is solidly supported on the support stand to avoid injury.

- Remove the rear wheel; then remove the rear boot guard. Do not discard the boot guard.

4. Install the rear A-arm bracket and the anti-rotational device on the rear suspension A-arm using the following procedure.

A. Place the mount plate into position on top of the lower A-arm; then place the mount beneath the A-arm.



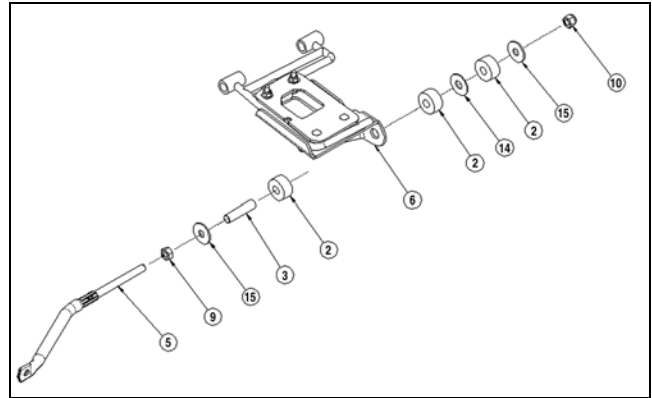
ATV-1173

B. Install the two 60 mm carriage bolts into the top square holes of the mount plate through the mount; then secure with flat washers and nylon nuts. Only finger-tighten the nuts at this time.

C. Install two 60 mm carriage bolts (inserted from the bottom) through the mount and the mount plate; then secure with the flat washers and nylon nuts. Only finger-tighten the nuts at this time.

D. Tighten all nylon nuts to 22 ft-lb using a criss-cross pattern.

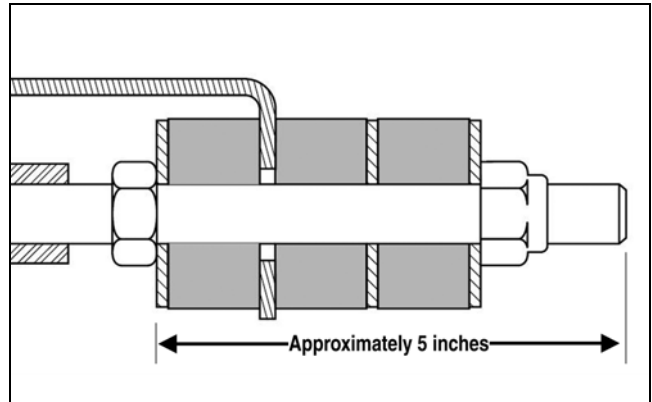
E. Install the hex nut onto the threaded portion of the anti-rotational device tube.



ATV-1174

F. Install a 17 mm I.D. flat washer, spacer tube, and bushing onto the anti-rotational tube. Assume the bushing slides over the spacer tube.

G. Slide the anti-rotational tube assembly through the hole at the bottom of the mount; then install a bushing, 3/4-in. I.D. flat washer, bushing, 17 mm I.D. flat washer, and nylon lock nut onto the tube. Tighten lock nut securely.



ATV-1153B

⚠ CAUTION

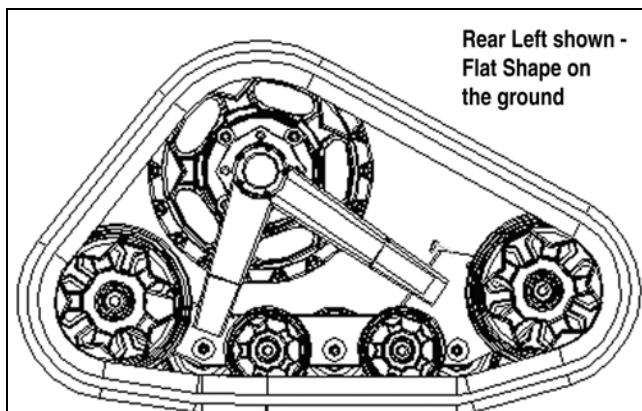
Do not over-tighten the lock nut when installing the device. Some components may deform and may affect security features.

5. Install the rear pre-assembled track kit on the rear hub; then secure with original lug nuts. Tighten lug nuts to 40 ft-lb.

■NOTE: For vehicles with aluminum wheels, use nuts from Lug Nut Kit (p/n 1436-206).

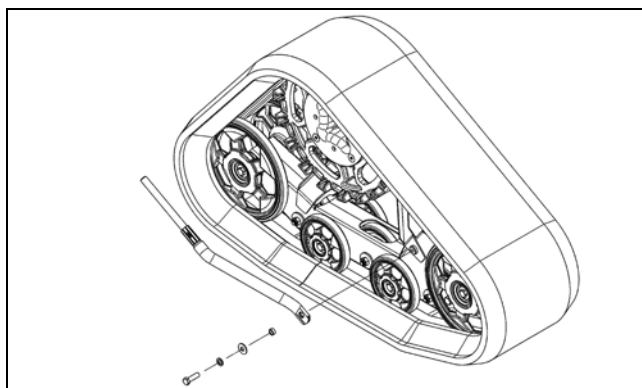
⚠ CAUTION

Care must be taken that the rear left track kit is installed on the left side and the rear right track kit is installed on the right side (see color-coded sticker for proper identification).



ATV-1172A

6. Rotate the anti-rotational device until the hole in the extremity is aligned with the hole in the frame; then secure with the hex bolt (threads coated with blue Loctite #242), lock washer, flat washer, and spacer. Tighten to 31 ft-lb.



ATV-1148

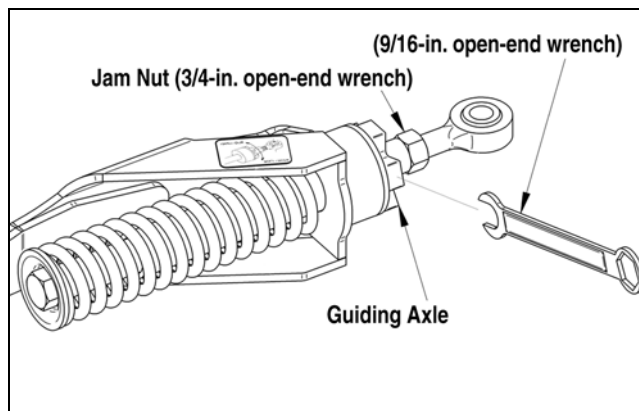
7. Install existing boot guard using existing hardware.

Adjusting Front Track

■NOTE: Adjustments can be made by the ATV owner if qualified to do so. If the owner does not feel qualified, take the ATV to an authorized Arctic Cat ATV dealer for this service.

■NOTE: This procedure is appropriate for both front tracks.

1. Place the ATV on a flat surface.
2. To adjust steering effort, use a 3/4-in. open end wrench to loosen the jam nut of the anti-rotational device.

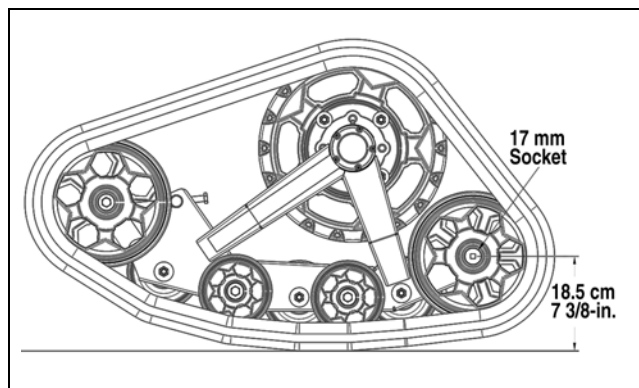


ATV-1147A

3. Using a 9/16-in. open end wrench on the notches, rotate the guiding axle to adjust steering effort.

■NOTE: Rotating the guiding axle clockwise (screwing in) will raise the rear of the track making turning easier; rotating counterclockwise (screwing out) will lower the rear of the track making turning harder.

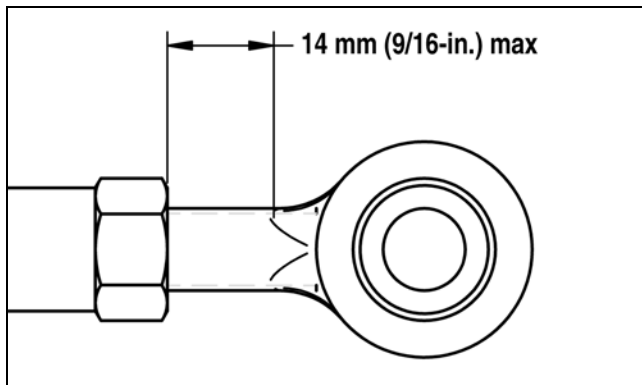
4. Tighten the jam nut securely.
5. To set vertical distance, use a 17 mm socket and a tape measure. Recommended vertical distance is 18.5 cm (7 3/8 in.) between the rear wheel and the ground.



ATV-1146A

⚠ WARNING

If it becomes necessary to unscrew the anti-rotational device ball joint to adjust the track, pay particular attention to the exposed length of the ball joint shaft. If this length exceeds 14 mm (9/16 in.), there will not be enough threads in contact with the sliding rod and loss of control may occur.



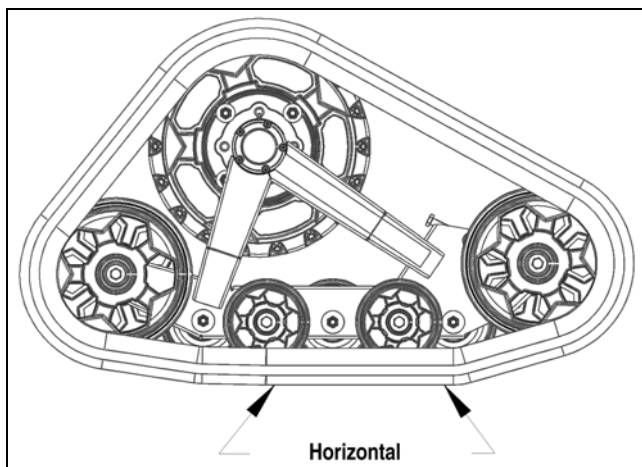
ATV-1145A

Adjusting Rear Track

■NOTE: Adjustments can be made by the ATV owner if qualified to do so. If the owner does not feel qualified, take the ATV to an authorized Arctic Cat ATV dealer for this service.

■NOTE: This procedure is appropriate for both rear tracks.

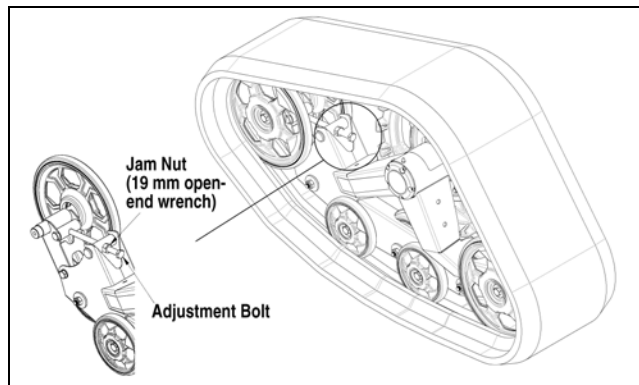
1. Place the ATV on a flat surface.
2. Tighten the 5/8-in. adjustment nuts on both sides of the rubber bushings just to slightly press the rubber bushings against the A-arm bracket.
3. Tighten the 5/8-in. nuts until they “jam” firmly on the ends of the spacer. Make sure the small wheels are flat on the ground (horizontal).



ATV-1144A

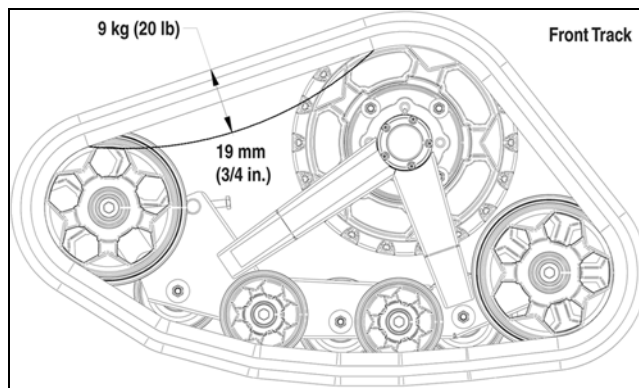
■NOTE: The nuts must be tightened equally so all of the small wheels stay in contact with the ground (horizontal) when the ATV is on a flat surface.

4. To adjust track tension (deflection), loosen the jam nut on the adjustment pivot.

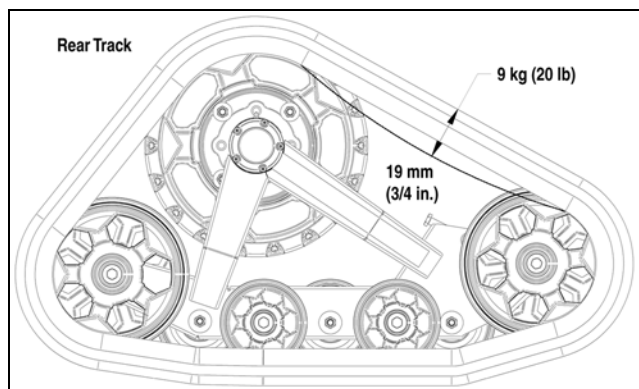


ATV-1143A

5. Rotate the adjustment bolt until a track deflection of 19 mm (3/4 in.) at 9 kg (20 lb) force is attained.



ATV-1142A



ATV-1176A



CAUTION

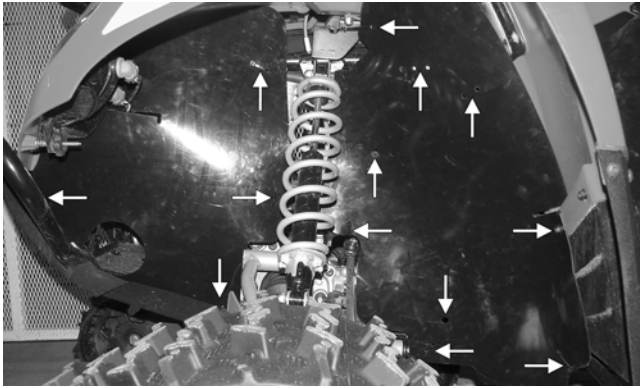
Do not over-tighten the track or performance loss and/or component damage may occur.

6. Tighten the jam nut securely.

Installing Snow Deflector Panels (p/n 1441-878) - Front (p/n 1441-879) - Rear

■NOTE: These deflector panels are recommended for use in snow conditions only.

1. Place the front deflector panels in position and secure with cable ties as needed.
2. If the ATV does not have rear splash deflectors, install rear deflector panels as shown. Use cable ties as needed.



■NOTE: Some ATV's may have rear splash deflectors. In this case, the rear snow deflector panels do not have to be installed.

Operation

■NOTE: Carefully read all items in the Safe Operating Practices section of this manual.

An ATV equipped with tracks advances more slowly than when operating on its original wheels; therefore, it moves at a speed approximately 65% that of the speedometer reading.

⚠ CAUTION

Always have the ATV in 4WD when operating with the track kit. Operating in 2WD will affect performance and may damage the ATV.

Operating in snow conditions may create an "ice film" on the brake discs. Periodically apply the brakes while operating to remove the ice film.

■NOTE: See an authorized Arctic Cat ATV dealer for the required Clutch Kit (p/n 1436-332 - 650/700 models) or Clutch Kit (p/n 1436-333 - 1000 model).

Service

Maintenance

After the initial two hours of operation, check and/or adjust track tension.

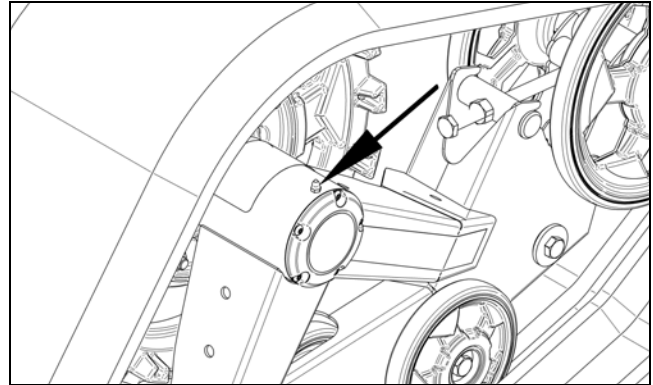
Daily inspect for loose, damaged, or worn parts and adjust or replace as needed.

Periodically check all hardware (especially the wheel lug nuts) to ensure they are tight.

Replace any parts that become too worn. Refer to the Service Parts section of this manual for replacement part numbers.

Never use solvents to clean the rubber of the tracks. Degradation may occur. Use only water with mild detergent.

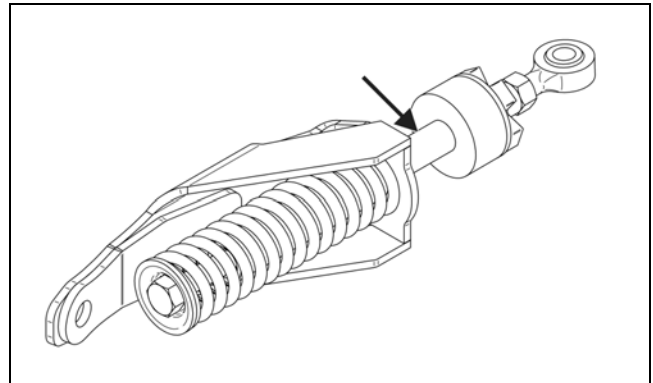
Periodically apply a good quality grease to the main axles. Remove excess grease from the hub seals.



■NOTE: If the ATV is operated in muddy, wet, or soft terrain conditions. Lubricate the grease points after each use.

Periodically lubricate the front anti-rotational device sliding rods:

- A. Lift the front of the front tracks to compress the anti-rotational device springs.
- B. Lubricate the sliding rods.



Replacing Track

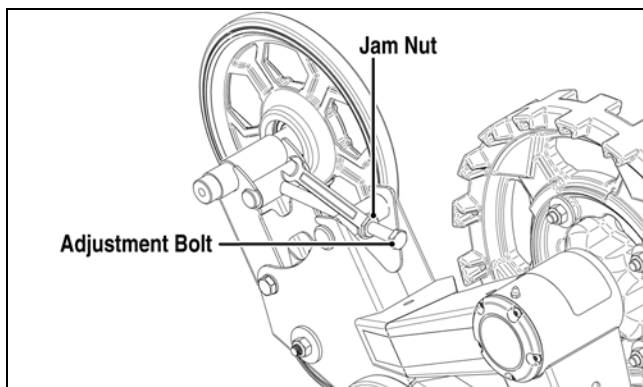
■NOTE: This procedure is appropriate for all four tracks.

1. Raise the ATV off the ground using a support stand.

⚠ WARNING

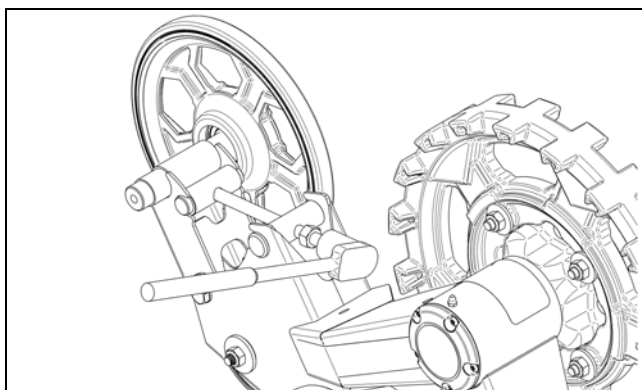
Make sure the ATV is solidly supported on the support stand to avoid injury.

2. Loosen the jam nut on the tensioner pivot.



ATV-1167A

3. Loosen the adjustment bolt; then remove the pivot axles.

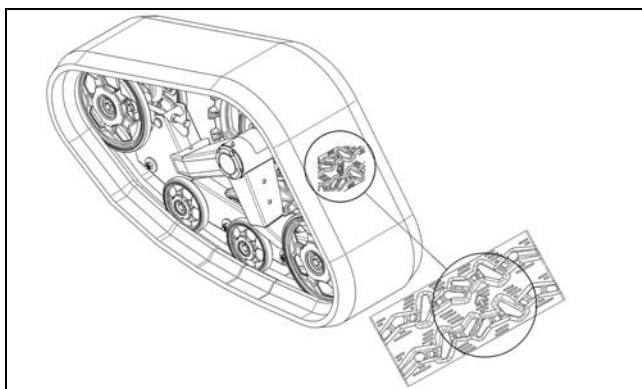


ATV-1165

4. Rotate the tensioner pivot inward and remove the track.

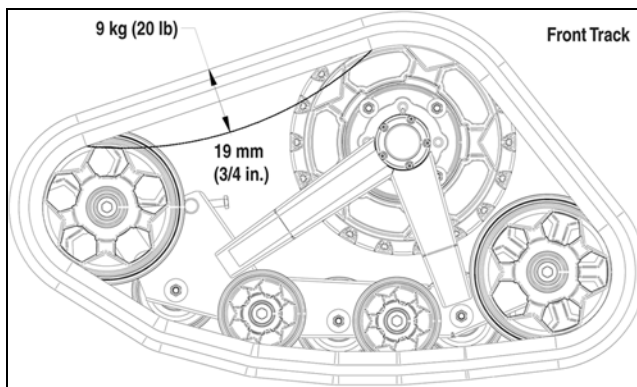
5. Place the new track in position.

■NOTE: When installing a track, note the directional arrow. The arrow should be directed toward the front of the ATV when viewing from the top.

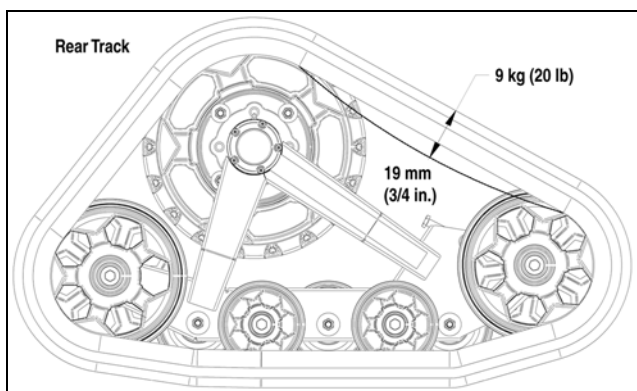


ATV-1164

6. Rotate the tensioner pivot outward to its original position.
7. Install the pivot axles; then tighten the adjustment bolt until a track deflection of 19 mm (3/4 in.) at 9 kg (20 lb) force is attained. Tighten the jam nut securely.



ATV-1142A



ATV-1176A



CAUTION

Do not over-tighten the track or performance loss and/or component damage may occur.

■NOTE: After 2-3 hours of operation on a new track, check and/or adjust track tension.

Replacing Sprocket and Main Axle

■NOTE: This procedure is appropriate for all four sprockets and main axes.

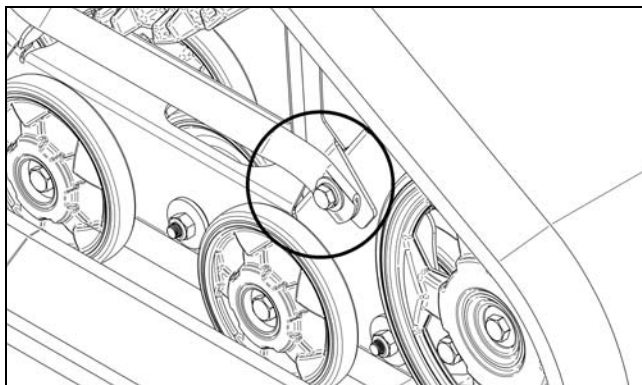
1. Raise the ATV off the ground using a support stand.



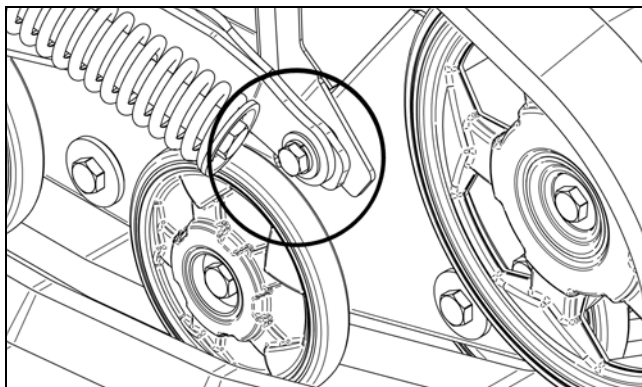
WARNING

Make sure the ATV is solidly supported on the support stand to avoid injury.

2. Remove the track (see Replacing Track sub-section).
3. Remove the bolt and nut securing the anti-rotational device to the frame.

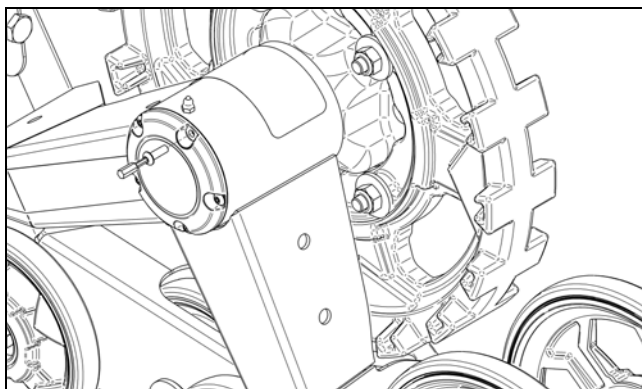


ATV-1162



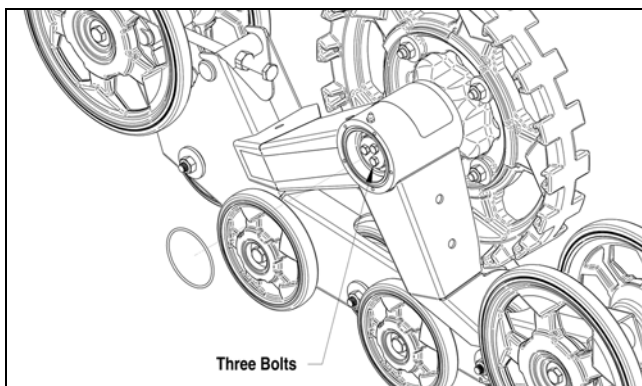
ATV-1163

4. Using a 3-mm hex key, remove screws securing the bearing cap. Care should be taken not to damage the cap.



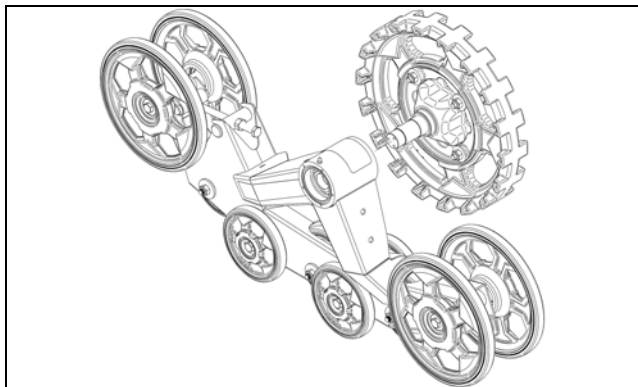
ATV-1161

5. Remove the O-ring; then remove the three bolts at the tip of the main axle. Remove the axle lock washer.



ATV-1160A

6. Pull the frame assembly straight out and away from the sprocket/main axle assembly.



ATV-1159

7. Remove the four nuts and bolts securing the sprocket to the main axle. Retain all flat washers for assembling purposes.

■ **NOTE:** At this point, assemble the sprocket/main axle assembly with determined new components. Tighten the new nylon nuts until at least four threads are exposed beyond the nylon portion of the nuts.

8. Press the frame assembly straight onto the sprocket/main axle assembly.

9. Install the axle lock washer; then install the three bolts (threads coated with blue Loctite #242) at the tip of the main axle. Tighten the bolts to 7 ft-lb.

■ **NOTE:** Lubricate the main axle bearings with a good quality bearing grease.

10. Install the O-ring; then place the bearing cap into position.

11. Using the 3-mm hex key, tighten the bearing cap screws securely.

12. Install the track (see Replacing Track sub-section).

Replacing Wheels (Large)

■ **NOTE:** This procedure is appropriate for all four large wheels.

1. Raise the ATV off the ground using a support stand.

⚠ WARNING

Make sure the ATV is solidly supported on the support stand to avoid injury.

2. Remove the tension from the track.
3. Remove the hex bolt and flat washer securing the wheel to the frame.
4. Remove the wheel.

- Place the new wheel into position on the frame; then secure with the hex bolt and flat washer. Tighten to 20 ft-lb.
- Tighten the track tension adjustment bolt until a track deflection of 19 mm (3/4 in.) at 9 kg (20 lb) force is attained. Tighten the jam nut securely.

Replacing Wheels (Small External)

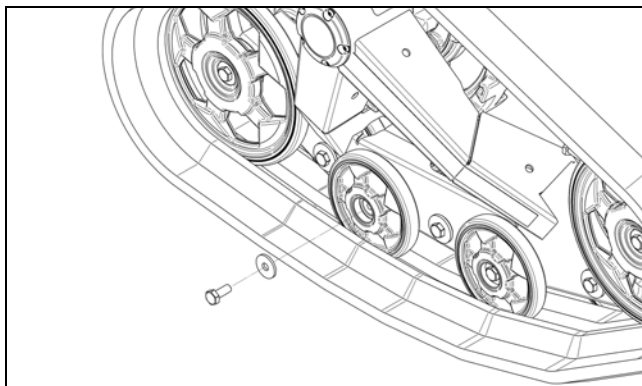
■NOTE: This procedure is appropriate for all four small external wheels.

- Raise the ATV off the ground using a support stand.

⚠ WARNING

Make sure the ATV is solidly supported on the support stand to avoid injury.

- Remove the tension from the track.
- Remove the hex bolt and flat washer securing the wheel to the frame.



ATV-1158

- Remove the wheel.
- Place the new wheel into position on the frame; then secure with the hex bolt and flat washer. Tighten to 20 ft-lb.
- Tighten the track tension adjustment bolt until a track deflection of 19 mm (3/4 in.) at 9 kg (20 lb) force is attained. Tighten the jam nut securely.

Replacing Wheels (Small Internal)

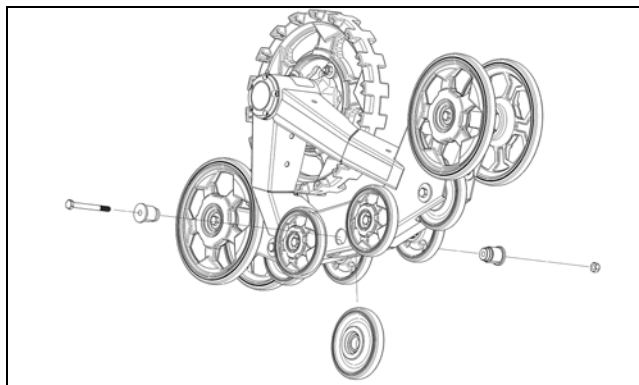
■NOTE: This procedure is appropriate for all three small internal wheels.

- Raise the ATV off the ground using a support stand.

⚠ WARNING

Make sure the ATV is solidly supported on the support stand to avoid injury.

- Remove the tension from the track.
- Remove the hex bolt and nut securing the wheel to the frame; then remove the two wheel axles.



ATV-1157

- Press downward on the track and slide the wheel down and out.
- Slide the new wheel into position in the frame; then install the two wheel axles, hex bolt, and nut. Tighten the nut to 20 ft-lb.
- Tighten the track tension adjustment bolt until a track deflection of 19 mm (3/4 in.) at 9 kg (20 lb) force is attained. Tighten the jam nut securely.

Replacing Tensioner Pivot

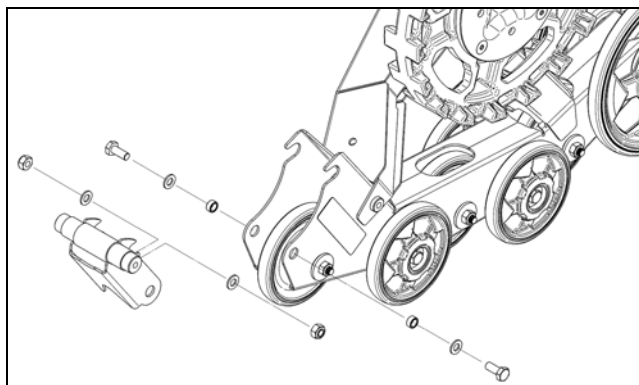
■NOTE: This procedure is appropriate for all four tensioner pivots.

- Raise the ATV off the ground using a support stand.

⚠ WARNING

Make sure the ATV is solidly supported on the support stand to avoid injury.

- Remove the tension from the track.
- Remove the large corner wheels. See Replacing Wheels (Large) sub-section.
- Remove the two nuts and flat washers securing the tensioner pivot to the frame; then remove the pivot.



ATV-1156

- Place the new tensioner pivot on the frame and secure with the two nuts and flat washers.
- Install the large corner wheels. See Replacing Wheels (Large) sub-section.

7. Tighten the track tension adjustment bolt until a track deflection of 19 mm (3/4 in.) at 9 kg (20 lb) force is attained. Tighten the jam nut securely.

Replacing Main Axle Bearing and Seal

■NOTE: This service can be performed by the ATV owner if qualified to do so. If the owner does not feel qualified, take the ATV to an authorized Arctic Cat ATV dealer for this service.

■NOTE: This procedure is appropriate for all bearings and seals.

1. Raise the ATV off the ground using a support stand.

⚠ WARNING

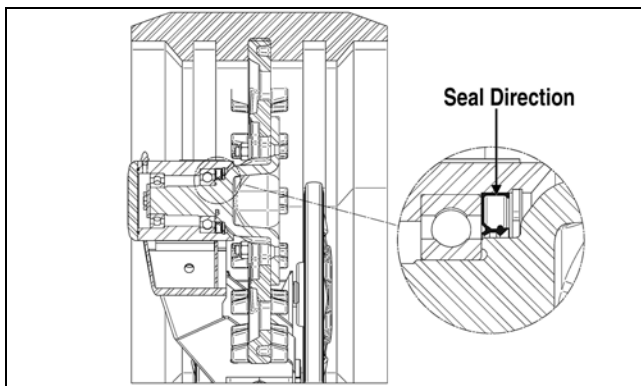
Make sure the ATV is solidly supported on the support stand to avoid injury.

2. Remove the tension from the track.
3. Remove the frame assembly away from the sprocket/main axle assembly (see Replacing Sprocket and Main Axle sub-section).
4. Clean excess grease from the bearing housing and hub shaft.
5. Remove the snap ring.
6. Using an appropriate bearing/seal removing tool, remove the bearing and seal.
7. Using an appropriate bearing installing tool, press the new bearing in place.

⚠ CAUTION

Assure the bearing is not a "sealed-type." If a seal is present, remove it.

8. Using an appropriate seal installing tool, install the new seal making sure the lip of the seal is directed toward the outside.



ATV-1155A

9. Install the snap ring.
10. Install the frame assembly (see Replacing Sprocket and Main Axle sub-section).

■NOTE: Lubricate the main axle bearing with a good quality bearing grease.

11. Tighten the track tension adjustment bolt until a track deflection of 19 mm (3/4 in.) at 9 kg (20 lb) force is attained. Tighten the jam nut securely.

Replacing Frame

■NOTE: This service can be performed by the ATV owner if qualified to do so. If the owner does not feel qualified, take the ATV to an authorized Arctic Cat ATV dealer for this service.

■NOTE: This procedure is appropriate for all four frames.

1. Raise the ATV off the ground using a support stand.

⚠ WARNING

Make sure the ATV is solidly supported on the support stand to avoid injury.

2. Remove the tension from the track.
3. Remove the frame assembly away from the sprocket/main axle assembly (see Replacing Sprocket and Main Axle sub-section).
4. Remove all wheels from the frame (see Replacing Wheels sub-sections).
5. Position the new frame; then install all wheels (see Replacing Wheels sub-sections).
6. Install the frame assembly (see Replacing Sprocket and Main Axle sub-section).

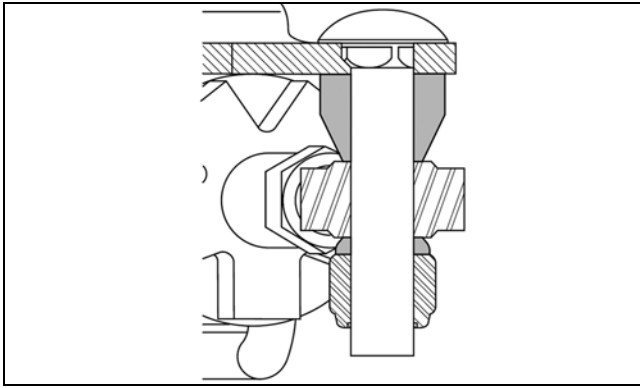
■NOTE: Lubricate the main axle bearing with a good quality bearing grease.

7. Tighten the track tension adjustment bolt until a track deflection of 19 mm (3/4 in.) at 9 kg (20 lb) force is attained. Tighten the jam nut securely.

Replacing Anti-Rotational Device (Front)

■NOTE: This procedure is appropriate for both front devices.

1. Remove the hex bolt, lock washer, flat washer, and spacer securing the devices to the frame.
2. Remove the nut and two ball-joint spacers securing the ball joint to the A-arm bracket.
3. With determined new components, install the ball joint to the A-arm bracket with the two spacers and nut. Tighten the nut to 55 ft-lb.
4. Place the device into position on the frame; then secure with the spacer, flat washer, lock washer, and hex bolt (threads coated with blue Loctite #242). Tighten hex bolt to 31 ft-lb.

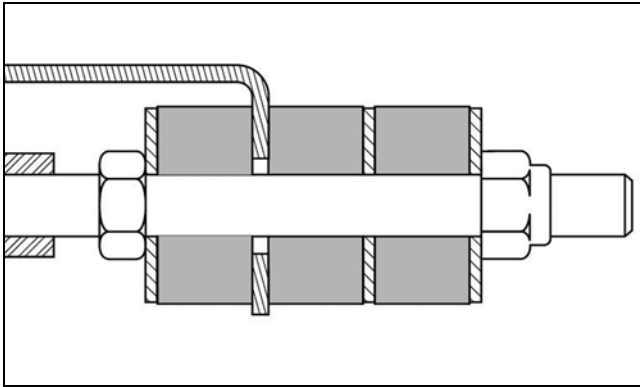


ATV-1154

5. Adjust the front anti-rotational device (see Adjusting Front Track sub-section).

Replacing Anti-Rotational Device (Rear)

■NOTE: This procedure is appropriate for both rear devices.



ATV-1153

1. Remove the self-locking nut from the threaded portion of the anti-rotational device tube.
2. Remove the hex bolt, lock washer, flat washer, and spacer securing the device to the frame.
3. With determined new components, place the device into position on the frame; then secure with the spacer, flat washer, lock washer, and hex bolt (threads coated in blue Loctite #242). Tighten hex bolt to 31 ft-lb.
4. Adjust the rear anti-rotational device (see Adjusting Rear Track sub-section).

Preparation for Storage

1. Thoroughly clean off any dirt prior to storage.
2. Store on a level location to ensure its stability.
3. Do not put additional weight on the ATV.
4. Store ATV in a clean, dry place.
5. Do not store near a heat source.

Preparation after Storage

1. Verify tightening fasteners are secure.
2. Verify that main axles and wheels spin freely.
3. Verify that anti-rotational devices work properly and are adjusted correctly.
4. Verify track tension.



CAUTION

If stored for more than four consecutive weeks in a wet place, verify bearings and seals are not damaged.

How To Order Service Parts

The Service Parts section contains the replacement part numbers of all components of the Track Kits.

To obtain replacement parts, please contact your Arctic Cat ATV Dealer for service. When ordering parts, please have the following information on hand:

- Part number you are looking for.
- Model and serial number of the Track.
- Quantity required.

Owner/Warranty Registration

Write the appropriate information in the spaces below. Please keep this information for your own records.

Name _____

Address _____

City/Town _____

State/Prov _____

Zip/Postal Code _____

Serial # _____

■ **NOTE:** Serial number is located on inside of front right track kit assembly.



Serial number required

Date Sold _____

Delivery Checklist:

- ☐ Review the Arctic Cat Limited Warranty with customer.
- ☐ Review with the customer the Safe Operation and Service sections.
- ☐ Review with the customer the periodic lubrication and Maintenance.
- ☐ Review with the customer the daily and periodic inspections.
- ☐ Review with the customer the Service Parts availability.

Prior to delivery to the customer, do the following:

- ☐ Record the Serial Number for the Arctic Cat Product.
- ☐ Complete this form which is also available on Cat Tracker and fax form to 218-681-9859.
- ☐ Make a copy of the registration form for the customer.
- ☐ Give the customer the Operator's Manual and encourage the customer to read the manual.

Date Delivered _____

Dealer Signature _____

Customer Signature _____

Date _____

NOTES

NOTES

NOTES

