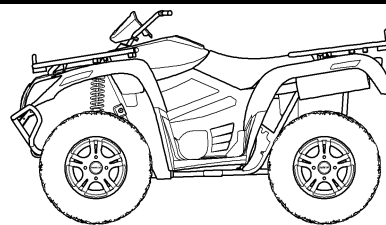


# Arctic Cat® ATV

## Installation Instructions - Accessory Kit

### Econo Sprayer Kit (p/n 1436-607)



■ **NOTE:** Read these installation instructions thoroughly before beginning the installation process. Retain these Installation Instructions for future reference.

#### Kit includes:

p/n	QTY	DESCRIPTION
2441-068	1	Tank
2441-057	1	Pump
2441-022	1	Hose Barb Elbow (3/8 x 1/2)
2441-052	2	Plug
2441-049	2	One Hole Clamp
2441-069	1	Tank Cover
2441-015	1	Harness
2441-038	2	Mounting Bracket
2441-060	1	Spray Hose 15 ft (3/8)
2441-062	1	Spray Wand
2441-005	4	Cap Screw (5/16 x 1/2-in.)
2441-033	4	Machine Screw (10/24 x 5/8-in.)
2441-024	1	Hose Carrier
2441-032	4	Machine Screw (10/24 x 1/2-in.)
2441-025	4	Hose Clamp (#4)
2441-063	2	Spray Wand Clip
2441-011	4	Flat Washer (10/24)
2441-067	1	Suction Hose (3/8)
0453-710	1	Instruction

■ **NOTE:** Refer to illustrations on page 2 of this instruction for location of each component.

1. Install Mounting Brackets on the bottom of Tank using four Cap Screws (5/16 x 1/2-in.).

■ **NOTE:** Do not over tighten cap screws into tank inserts.

2. Secure Pump to the front left side of the tank using four Machine Screw (10/24 x 5/8-in.) and four Flat Washers.
3. Install Hose Elbow into tank; then connect Suction Hose from tank to pump. Secure using two Hose Clamps.
4. Secure Hose Carrier using two Machine Screws (10/24 x 1/2-in.). Tighten securely.
5. Connect Spray Hose 15 ft (3/8) to the pump; then connect other end of hose to Spray Wand.
6. Secure all hoses with hose clamps.

**Key**

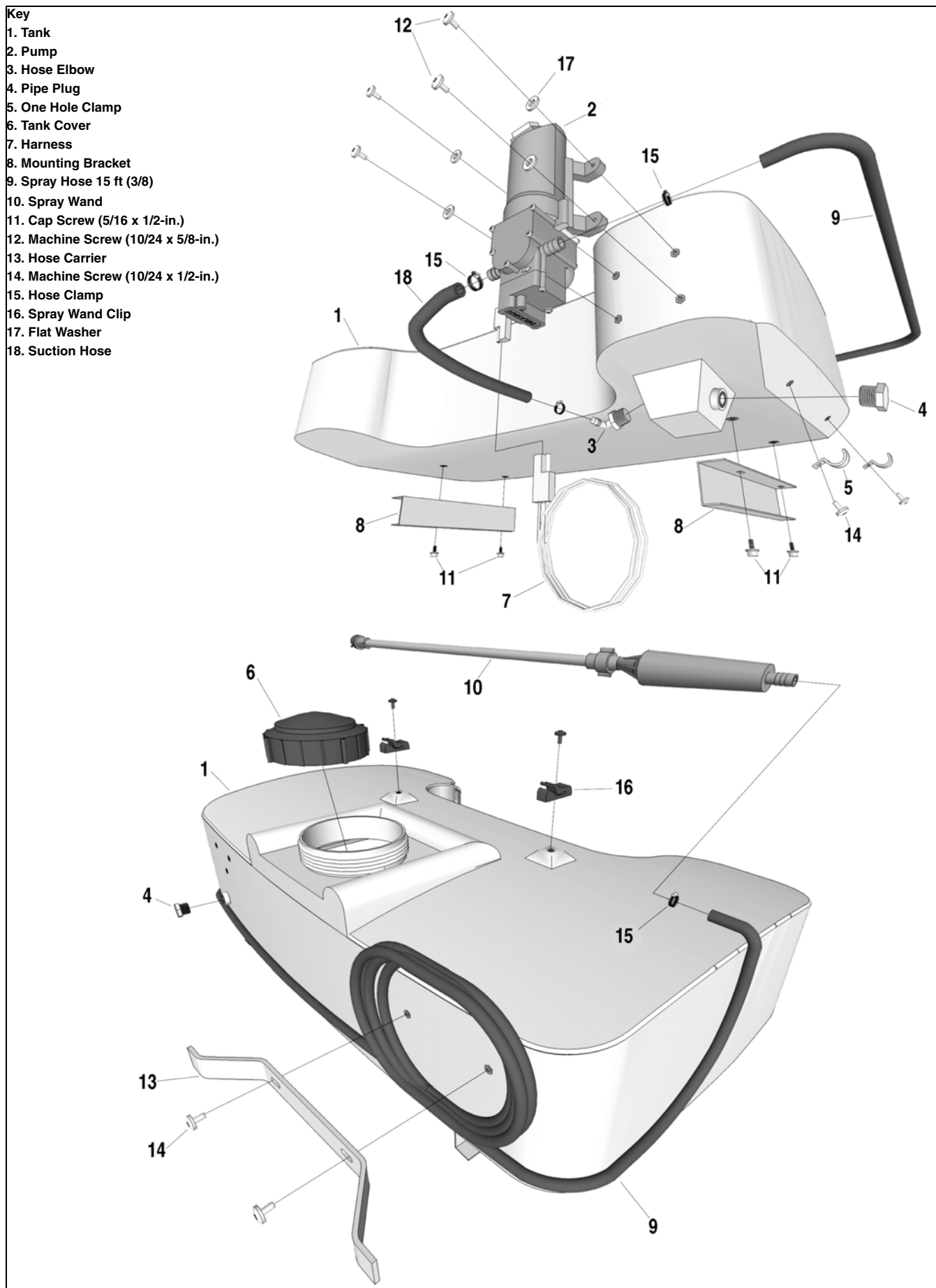
1. Tank
2. Pump
3. Hose Elbow
4. Pipe Plug
5. One Hole Clamp
6. Tank Cover
7. Harness
8. Mounting Bracket
9. Spray Hose 15 ft (3/8)
10. Spray Wand
11. Cap Screw (5/16 x 1/2-in.)
12. Machine Screw (10/24 x 5/8-in.)
13. Hose Carrier
14. Machine Screw (10/24 x 1/2-in.)
15. Hose Clamp
16. Spray Wand Clip
17. Flat Washer
18. Suction Hose

This technical drawing illustrates the exploded view of a backpack sprayer. The main components are shown in their relative positions as they would be assembled. At the top, the spray wand (10) is connected to a spray hose (9) via a spray wand clip (16). The spray hose is attached to a pump (2) mounted on a tank (1). A suction hose (18) is also connected to the pump. Various mounting brackets (8), cap screws (11), machine screws (12, 14), hose clamps (15), and flat washers (17) are shown being installed onto the pump and tank. A hose carrier (13) is shown being attached to the side of the tank. The tank cover (6) is shown at the bottom left, ready to be placed on the tank. The entire assembly is supported by a harness (7).

- Key**

  1. Tank
  2. Pump
  3. Hose Elbow
  4. Pipe Plug
  5. One Hole Clamp
  6. Tank Cover
  7. Harness
  8. Mounting Bracket
  9. Spray Hose 15 ft (3/8)
  10. Spray Wand
  11. Cap Screw (5/16 x 1/2-in.)
  12. Machine Screw (10/24 x 5/8-in.)
  13. Hose Carrier
  14. Machine Screw (10/24 x 1/2-in.)
  15. Hose Clamp
  16. Spray Wand Clip
  17. Flat Washer
  18. Suction Hose

This exploded view diagram illustrates the assembly of a backpack sprayer. The main components are shown in their relative positions: the tank (1) at the base, the pump (2) mounted on top, the spray hose (9) connected to the pump, and the spray wand (10) at the end. The diagram also shows the mounting brackets (8) and harness (7) for the tank. Various fasteners, including cap screws (11), machine screws (12, 14), hose clamps (15), and a spray wand clip (16), are shown being installed into the assembly. A suction hose (18) is also shown connected to the pump. The diagram is labeled with numbers 1 through 18, corresponding to the key.



## SAFETY PRECAUTIONS

- Product knowledge is the first step to safety.
- Read all instructions carefully.
- Always wear protective equipment when handling dangerous chemicals.
- Never let children operate sprayer or handle chemicals.
- Repair any loose or leaking fittings and hoses immediately.
- Avoid spraying in windy conditions.
- Never use sprayer for anything other than its original intentions.
- Follow applications and rate charts carefully.
- For precautionary reasons, know first aid treatments for any dangerous material you may handle.

### **WARNING**

Take all necessary precautions when handling chemicals. Wear coveralls, safety vest, boots, hat, gloves, respirator, and goggles. Wash coveralls, etc., daily. DO NOT spray upwind or on windy days. Avoid waste of chemicals.

- Flush unit with clean water and ammonia after every use.
- Never leave chemical or water in tank after use.

■ **NOTE: Freezing will cause cracking of components.**

### **To winterize, do the following:**

1. Drain all water from tank by removing flush plug.
2. Remove hoses from pump.
3. Remove nozzle caps and loosen diaphragms.
4. Remove and drain filter bowl.
5. Disconnect hoses from valve bodies.
6. Pump RV antifreeze through the sprayer.

■ **NOTE: Antifreeze may be left in the sprayer over the winter. This will not damage the sprayer.**

## CALIBRATION GUIDE

