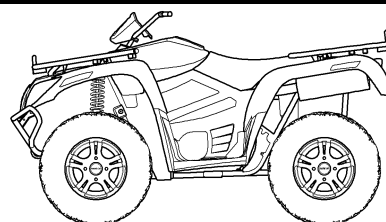


# Arctic Cat® ATV

## Installation Instructions - Accessory Kit

### Handlebar Krank Box Bracket Kit (p/n 1436-653)



■ **NOTE:** Read these installation instructions thoroughly before beginning the installation process. Retain these Installation Instructions for future reference.

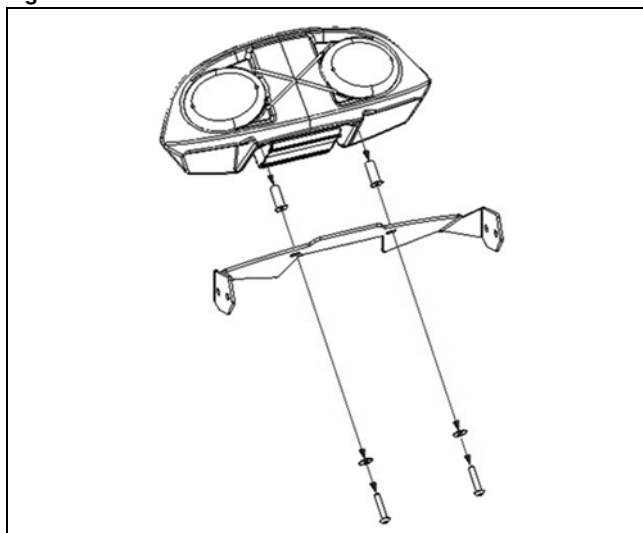
#### Kit includes:

p/n	QTY	DESCRIPTION
N/A	1	Bracket
1436-545	1	Handlebar/Taper Pin/Half Clamp Kit
0405-351	2	Half Clamp
1441-624	2	Plastic Knob
*	2	Torx-Head Screw 20 mm
*	4	Torx-Head Screw 16 mm
*	4	Torx-Head Screw 30 mm
*	2	Zinc Flat Washer (M8)
*	4	Black Flat Washer (M6)
*	4	Nylon Hex Nut (M8 x 1.25)
*	4	Nylon Hex Nut (M6 x 1)
*	2	Nylon Hex Nut (M5 x .8)
*	4	White Nylon Washer
*	4	Plastic Snap Washer
0453-852	1	Instructions

\* Included in Hardware Kit (p/n 1436-641)

1. Secure the krank box to Bracket using two well nuts, two flat washers, and two torx-head screws. Hardware included with krank box. Tighten securely. See Fig. 1.

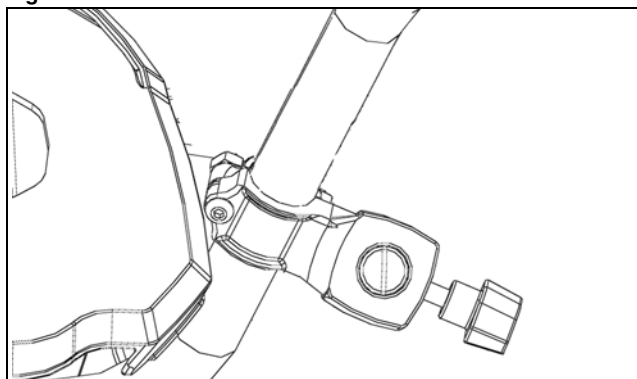
Fig. 1



ROV-3064

2. Position Handlebar Bracket onto the right-side handlebar and secure with Half Clamp, one 5 mm Torx-Head Cap Screws, and one 5 mm Nyloc Hex Nuts. Finger-tighten only at this time. See Fig. 2.

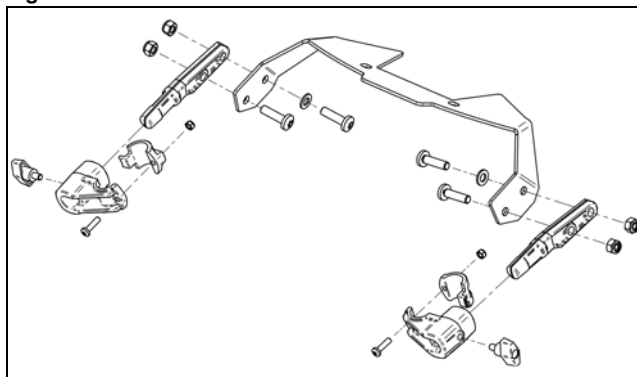
Fig. 2



ATV-3071

3. Repeat step 1 for opposite side.
4. Secure bracket w/krank box to the taper pins using the hardware provided. Tighten securely. See Fig. 3.

Fig. 3



ATV-3070

5. Install the taper pins into the mounting brackets and secure using two thumb screws. Tighten securely.
6. Secure hardware from step 2.

