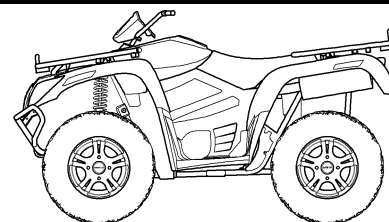


# Arctic Cat® ATV

## Installation Instructions - Accessory Kit

### Quick-Release Windguard Windshield Kits (p/n 1436-590/591/592)



■ **NOTE:** Read these installation instructions thoroughly before beginning the installation process. Retain these Installation Instructions for future reference.

**Application:** All 1996-2013 250-1000 cc models excluding 366, Mud Pro, and XC 450 models.

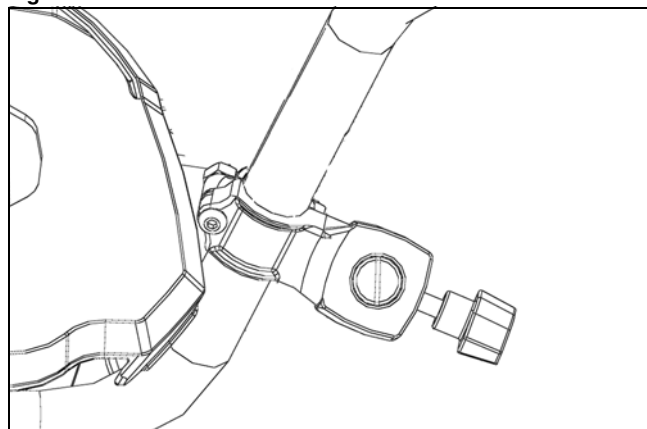
#### Kit includes:

p/n	QTY	DESCRIPTION
1436-545	1	Handlebar/Taper Pin/Half Clamp Kit
0405-351	2	Half Clamp
2441-092	1	Right-Side Windshield Bracket
2441-093	1	Left-Side Windshield Bracket
1441-624	2	Plastic Knob
1436-641	1	Hardware Kit
*	2	Torx-Head Screw 20 mm
*	4	Torx-Head Screw 16 mm
*	4	Torx-Head Screw 30 mm
*	2	Zinc Flat Washer (M8)
*	4	Black Flat Washer (M6)
*	4	Nylon Hex Nut (M8 x 1.25)
*	4	Nylon Hex Nut (M6 x 1)
*	2	Nylon Hex Nut (M5 x .8)
*	4	White Nylon Washer
*	4	Plastic Snap Washer
2441-089	1	Windshield (Black)
2441-090	1	Windshield (Red)
2441-091	1	Windshield (Clear)
0453-779	1	Instructions

\* Included in Hardware Kit (p/n 1436-641)

1. Position Mounting Bracket onto the right-side handlebar and secure with Half Clamp, two 5 mm Torx-Head Cap Screws, and two 5 mm Nyloc Hex Nuts. Finger-tighten only at this time. See Fig. 1 and Fig. 2.

Fig. 1



ATV-3071

2. Repeat step 1 for opposite side.

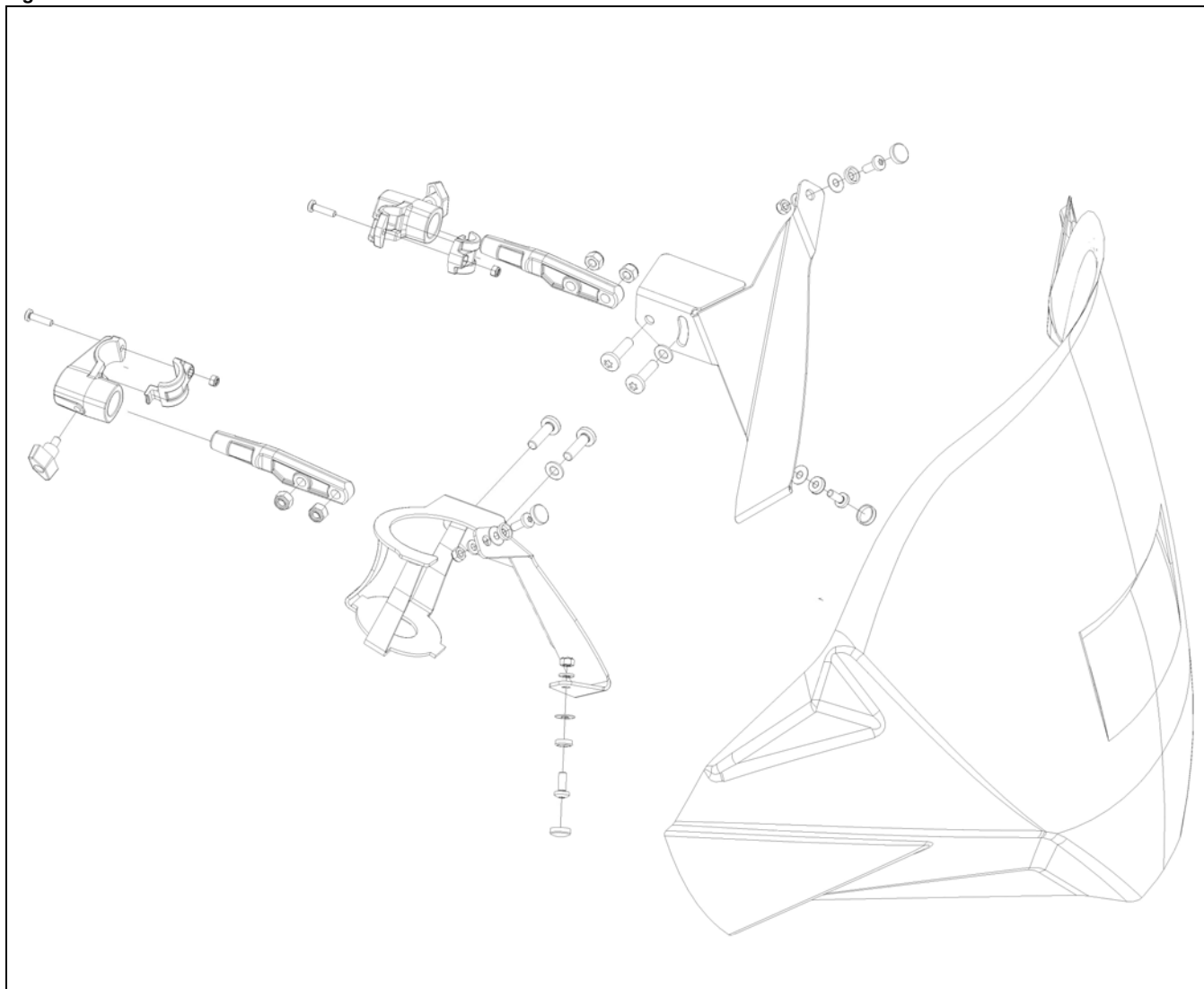
■ **NOTE:** Be sure the handlebar brackets are in the same location on both sides. Uneven brackets will cause stress on brackets and clamps.

#### CAUTION

**Be sure to position the mounting bracket so it does not interfere with any other ATV components.**

3. Secure Right-Side Taper Pin to the right windshield bracket using two 8 mm Torx-Head Screws, one Flat Washer, and two 8 mm Nyloc Hex Nuts. Finger-tighten only at this time.
4. Repeat step 4 for opposite side.
5. Secure windshield to windshield brackets using four Machine Screws (M6 x 16 mm), four plastic snap washers, four Nylon Washers (installed between the windshield and brackets), four Flat Washers, and four M6 Nuts. Tighten securely; then install Plastic Caps over each plastic snap washer. See Fig. 2.
6. Insert the taper pins into the mounting brackets and secure with two Plastic Knobs. Finger-tighten only at this time.
7. Position the windshield as desired; then secure all hardware.
8. Be sure to tighten the screws securing the mounting brackets from step 1 to 30 in.-lb.

Fig. 2



ATV-3056

