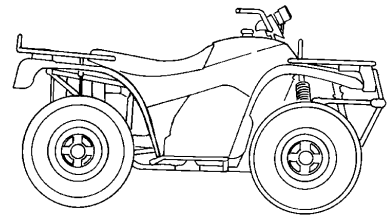


Arctic Cat® ATV

Installation Instructions — Accessory Kit

Snowplow Push Frame/Attachment Kits (p/n 0436-356) & (p/n 0436-357, 358, & 386)



■ **NOTE:** Read these installation instructions thoroughly before beginning the installation process. Retain these Installation Instructions for future reference.

Application:

1996-2002 (All 4x4 models)
NOT recommended for 2x4 applications

Kit Contents:

p/n	QTY	DESCRIPTION
0441-449	1	Main Frame
0441-319	1	Swivel Plate
8040-726	1	Lock Nut (5/8-11)
0441-330	1	Washer (5/8 in. ID)
8002-409	2	Cap Screw (1/2 -13 x 2 1/2 in.)
8040-606	2	Lock Nut (1/2 - 13)
8050-337	4	Flat Washer (1/2 in. ID)
0441-320	2	Adjustable Stop Block
8001-224	2	Cap Screw (3/8 - 16 x 1 1/4 in.)
8040-486	2	Lock Nut (3/8 - 16)
0441-333	2	Kickover Tension Spring
0441-332	2	Eye Bolt (5/16 - 18 x 3 1/4 in.)
0441-321	1	Angle Adjust Lever
0441-322	1	Angle Adjust Lever Grip
8002-134	2	Cap Screw (5/16 - 18 x 1 1/4 in.)
8001-137	2	Cap Screw (5/16 - 18 x 2 in.)
0441-331	1	Flat Washer (5/16 x 1 1/4 in.)
0441-323	1	Tension Spring (1/2 x 2 1/2 in.)
0441-435	1	Winch Lift Bracket
0441-325	2	Snap Hook
0441-326	2	Attachment Plate Lever
0441-327	2	Compression Spring (1/2 x 1 in.)
8050-247	4	Washer (5/16 x 3/4 in.)
8040-426	7	Lock Nut (5/16 - 18)
0441-328	1	Attachment Plate (Right Side) *
0441-329	1	Attachment Plate (Left Side) *
8409-030	4	Cap Screw - Flanged (10-1 1/4 x 30) *
8050-277	4	Flat Washer (3/8 x .822 in.) *
0441-451	1	Attachment Plate **
8001-138	2	Cap Screw (5/16-18 x 2 1/4 in.) **
0441-452	2	Bracket Clamp **
0441-453	6	Lock Nut (5/16 in.) **
0441-454	2	U-Bolt **
0441-518	1	Attachment Plate (Right Side) ***
0441-519	1	Attachment Plate (Left Side) ***
8409-030	4	Cap Screw (M10 - 1 1/4 x 30) ***
8050-277	4	Washer (3/8 x .822 in.) ***
0453-173	1	Instructions

* Included in Kit (p/n 0436-357)

** Included in Kit (p/n 0436-358)

*** Included in Kit (p/n 0436-386)

■ **NOTE:** Kit (p/n 0436-356) must be used in conjunction with Kit (p/n 0436-357, 358, or 386).

Snowplow Assembly

1. Position Main Frame (p/n 0441-449) on a flat, level surface.

2. Place the snowplow blade face down at the front of the swivel plate. Secure the blade to the swivel plate using two 1/2 in. cap screws, four washers, and two 1/2 in. lock nuts. Tighten the nuts until secure; then loosen 1/4 to 1/2 turn.

■ **NOTE:** The blade must be allowed to rotate freely. Periodically check the tightness to prevent unnecessary wear.

3. Install the adjustable stop blocks using two 3/8 x 1 1/4 in. cap screws and lock nuts. Rotate the blocks until both are at the same setting. Do not tighten at this time.
4. Rotate the plow blade back to an upright position until the frame comes into contact with the stop blocks. Check the stop blocks to ensure both are set the same and are fully seated against the blade frame. Tighten the cap screws and lock nuts securely.
5. Connect one eye bolt loop to one end of the kickover tension spring. Connect the opposite end of the spring to the pre-drilled hole at the top of blade frame. Install the threaded section of the eye bolt through the pre-drilled hole in the swivel plate and secure with a lock nut. Tighten nut until 1/4 in. of thread appears past the nut. Repeat for opposite side.
6. Slide the lever grip onto the angle adjust lever until fully seated.
7. Install the angle adjust lever into the bracket on the main frame and secure with a 5/16 x 1 1/4 in. cap screw and a lock nut. Do not over-tighten.

■ **NOTE:** Angle adjust lever must be allowed to rotate.

8. Install a 5/16 x 1 1/4 in. cap screw w/large diameter 5/16 in. washer through the slotted hole in the swivel plate and main frame. Tighten nut until secure; then loosen 1/4 to 1/2 turn.

■ **NOTE:** The swivel plate must be allowed to turn freely. Periodically check tightness and operation.

9. Connect one end of the kickover tension spring to the pre-drilled hole at the bottom of the angle adjust lever. Loop the opposite end of the spring end around the threaded part of the cap screw installed in previous step. Secure with a lock nut.
10. Install the lever attachment plate on one side of the rear main frame using a 5/16 x 2 in. cap screw, two washers, a 1/2 x 1 in. compression spring, and a lock nut. Tighten nut until threads appear past nut. Repeat steps for opposite side.

Installing Attachment Plates to ATV Kit (p/n 0436-357 & 0436-386)

■ **NOTE:** The left-side attachment plate in Kit (p/n 0436-357) has two additional holes pre-drilled for use with a hand lift.

1. Remove the two 10 mm cap screws that secure the left-side footrest. Discard the cap screws. Align the attachment plate mounting holes with the footrest mounting holes; then secure with two 10 mm x 1 1/4 in. cap screws and washers making sure the weld pin on the attachment plate faces outwards. Repeat for right-side footrest.

CAUTION

Ensure that the attachment plate mounting holes are aligned with the footrest mounting holes before tightening the cap screws. Failure to do so will result in cross threading of the frame weld nuts.

Installing Attachment Plate to ATV Kit (p/n 0436-358) 2000 & 2001 500 Automatic

1. Place the U-bolts over the front footrest support tubes next to the frame.
2. Position the attachment plate under the footrest support tubes with the two rear mounting holes (located at each end of the attachment plate) directly under the U-bolts (see Fig. 2).
3. Raise one end of attachment plate until the threads of the U-bolt are inserted through the mounting holes in the attachment plate; then loosely secure the plate with a washer and lock nut. Do not tighten at this time. Repeat for opposite side.
4. Position a bracket clamp onto each frame tube making sure the mounting holes in each clamp face toward the outside (see Fig. 2).
5. From the underside of the attachment plate, insert a 5/16 x 2 1/4 in. cap screw through the plate mounting hole and through the bracket clamp. Secure with a lock nut. Repeat for opposite side.
6. Securely tighten all mounting hardware.

Securing Snowplow to ATV

1. Lay the plow mount/blade assembly on a flat, level surface. Align the ATV and the snowplow main frame with the blade positioned at the front of the ATV.
2. Lift the rear of the main frame until the attachment plate pins align and drop into the L shaped cutouts in the main frame.
3. Pull and rotate the spring loaded attachment plate lever over the pin locking the main frame to the attachment plates(s)/ATV frame. Repeat for opposite side.

Operating Snowplow With Winch

1. Remove the hook from the winch cable; then attach the snap hook to the looped end of the winch cable and to the winch attachment plate on the plow main frame.

WARNING

The winch will not automatically stop at the full up position. Severe damage to the plow and ATV or personal injury may occur if the electric winch is not disengaged after the plow has reached the full up position.

CAUTION

Do not attach the winch hook directly to the plow main frame. Damage to the frame assembly may occur.

■ **NOTE:** An extra snap hook is supplied with the plow kit. This snap hook is a safety link between the winch and the plow frame and helps prevent damage to the frame assembly.

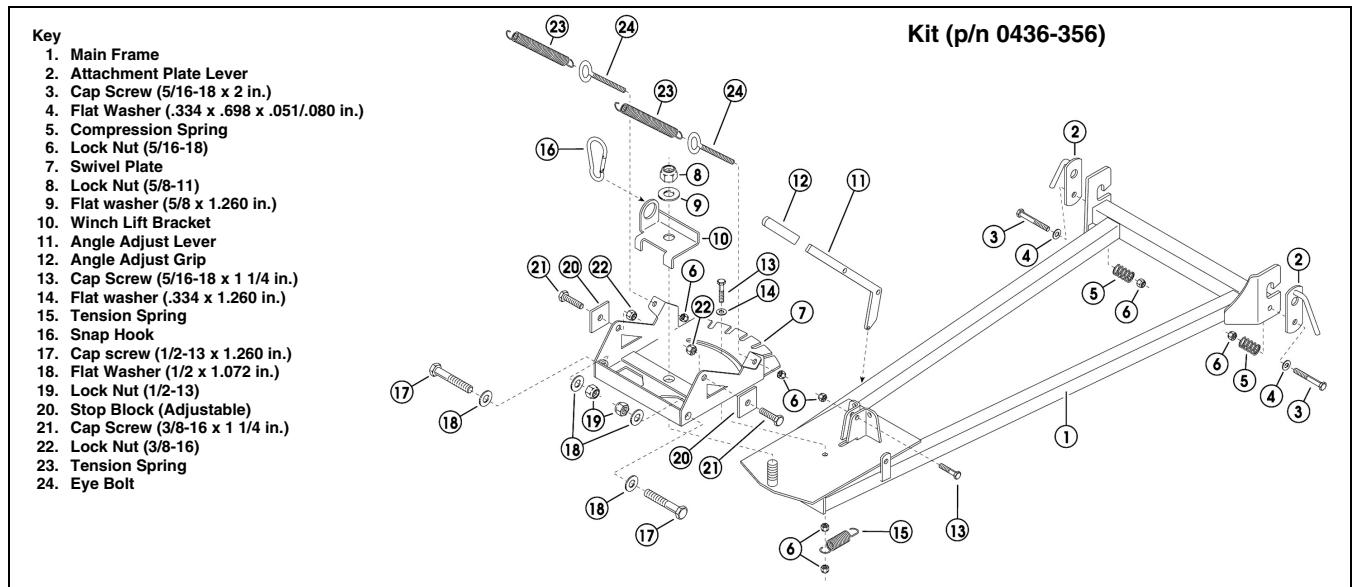
CAUTION

Do not over-tighten the winch. Damage to the ATV may occur.

OPERATING WITH HAND LIFT

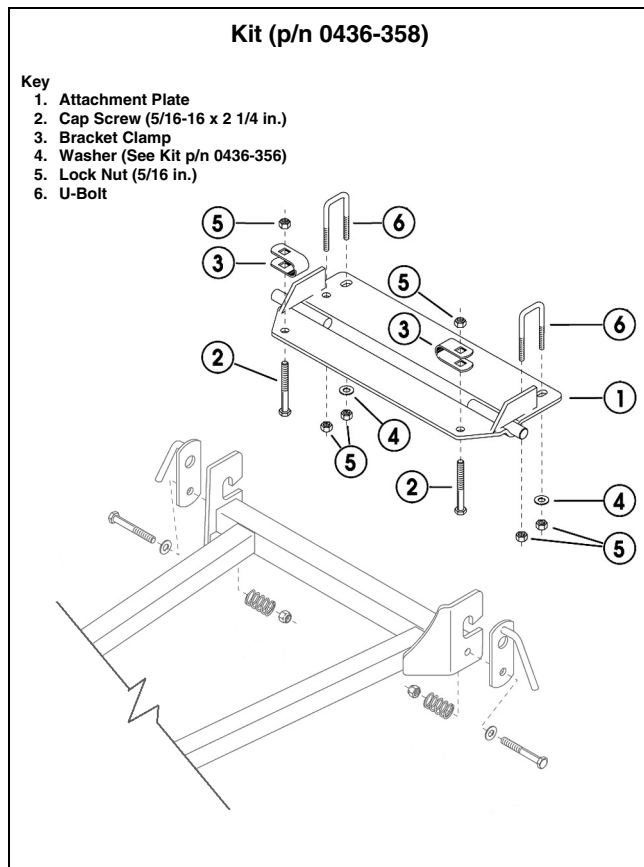
Refer to hand lift kit instructions.

Fig. 1



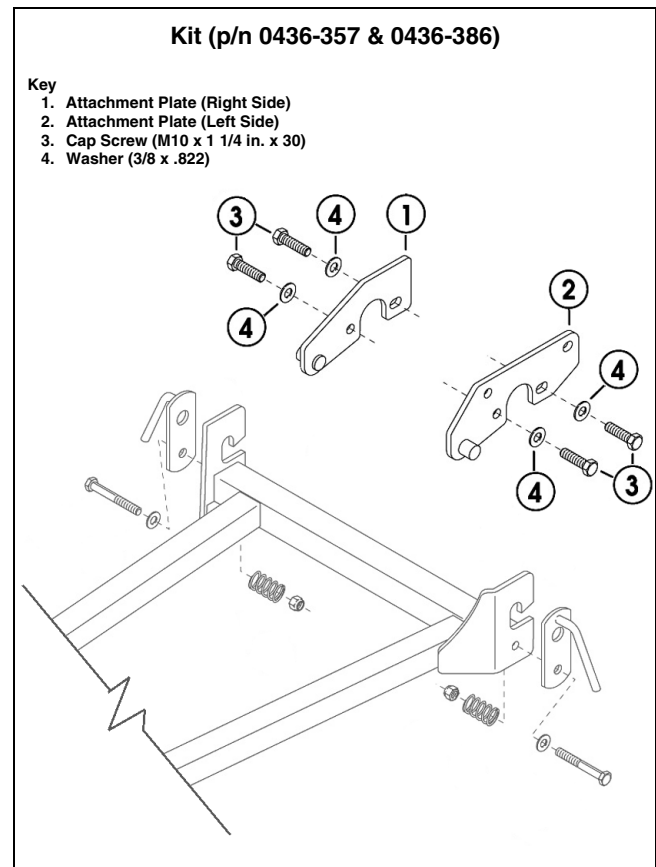
000-121A

Fig. 2



000-121B

Fig. 3



000-124B

(3)

