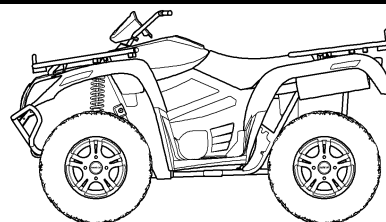


# Arctic Cat® ATV

## Installation Instructions - Accessory Kit

### Speedrack Sprayer w/Boom Kit (p/n 1436-680)



■ **NOTE:** Read these installation instructions thoroughly before beginning the installation process. Retain these Installation Instructions for future reference.

■ **NOTE:** Use this instruction when assembling the complete kit (p/n 1436-680) and discard installation instructions that are in the individual kits: Speedrack Rack-Mounted Sprayer Kit (p/n 1436-605) and the 120" Folding Boom Kit (p/n 1436-606).

#### Speedrack Rack-Mounted Sprayer

##### Kit includes:

Ref #	p/n	QTY	DESCRIPTION
1	2441-068	1	Tank
2	2441-069	1	Tank Cover
3	2441-056	1	Pump
4	2441-049	2	One Hole Clamp
5	2441-065	1	Strainer
6	2441-059	2	Speedrack Mount
7	2441-015	1	Harness
8	2441-019	1	Hose Barb Elbow (1/2 x 3/8)
9	2441-021	1	Hose Barb Elbow (1/4 x 3/8)
10	2441-039	1	Nipple
11	2441-052	1	Pipe Plug
12	2441-024	1	Hose Carrier
13	2441-014	1	Gauge (60 PSI)
14	2441-066	1	Suction Hose (1/2)
15	2441-062	1	Spray Wand
16	2441-026	2	Hose Clamp (#5)
17	2441-025	6	Hose Clamp (#4)
18	2441-027	2	Lock Pin
19	2441-005	4	Machine Screw (5/16 x 1/2)
20	2441-030	4	Machine Screw (4/40 x 1 7/8)
21	2441-010	8	Flat Washer (4/40)
22	2441-047	4	Nyloc Nut (4/40)
23	2441-032	4	Machine Screw (10/24 x 1/2)
24	2441-031	4	Machine Screw (10/24 x 1)
25	2441-036	1	Manifold Bracket
26	2441-020	1	Hose Barb Elbow (1/2)
27	2441-063	2	Spray Wand Clips
28	2441-060	1	Spray Hose (3/8)
29	2441-018	2	Hose Barb Cap (3/8)
30	2441-011	4	Flat Washer (10/24)
31	2441-035	2	Manifold
32	2441-022	1	Hose Barb Elbow (3/8 x 1/2)
33	2441-023	1	Hose Barb Elbow (3/8)
34	2441-055	1	Pressure Line (3/8)
35	2441-189	1	Threaded Cap
	0453-814	1	Instruction

Illustration on page 2 of this instruction

#### 120" Folding Boom

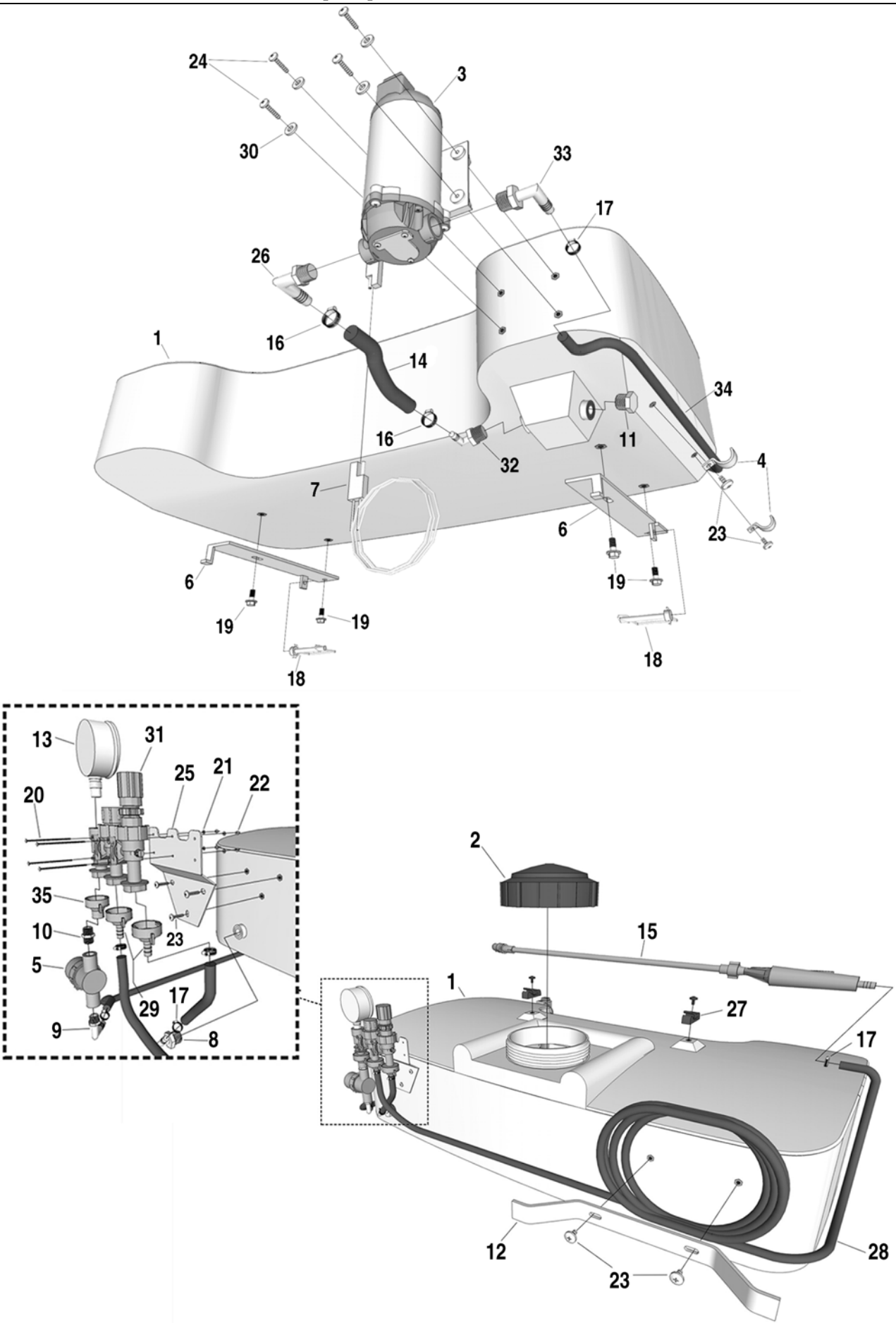
##### Kit includes:

Ref #	p/n	QTY	DESCRIPTION
1	2441-064	2	Spring
2	2441-037	3	Manifold Shutoff
3	2441-018	3	Hose Barb Cap (3/8)
4	2441-007	2	Clamp (1 1/4)
5	2441-008	4	Clamp (1)
6	2441-061	6	Spray Tip
7	2441-043	6	Nozzle Gasket
8	2441-044	6	Nozzle Strainer
9	2441-018	1	Hinge Plate (Left)
*	2441-017	1	Hinge Plate (Right)
10	2441-070	1	Hose Barb Tee
11	2441-060	1	Spray Hose (3/8)
12	2441-041	4	Nozzle (Single)
13	2441-040	2	Nozzle (Double)
14	2441-042	6	Nozzle Cap
15	2441-009	2	Eye Bolt
16	2441-054	1	Plug (2-in.)
17	2441-053	4	Plug (1-in.)
18	2441-058	1	Riser Tube
19	2441-034	1	Main Frame
20	2441-006	1	Center Frame
21	2441-050	1	Outside Frame (Left)
*	2441-051	1	Outside Frame (Right)
22	2441-071	2	U-Bolt
23	2441-028	2	Lock Pin
24	2441-001	2	Bumper Guard
25	2441-004	2	Cap Screw (3/8 x 3 1/4)
26	2441-003	2	Cap Screw (3/8 x 2)
27	2441-013	8	Flat Washer (3/8)
28	2441-046	6	Nut (3/8)
29	2441-048	2	Nyloc Nut (3/8)
30	2441-002	2	Cap Screw (1/4 x 3 1/4)
31	2441-012	8	Flat Washer (1/4)
32	2441-029	6	Lock Washer (1/4)
33	2441-045	6	Nut (1/4)
34	2441-025	14	Hose Clamp (#4)
	0453-814	1	Instruction

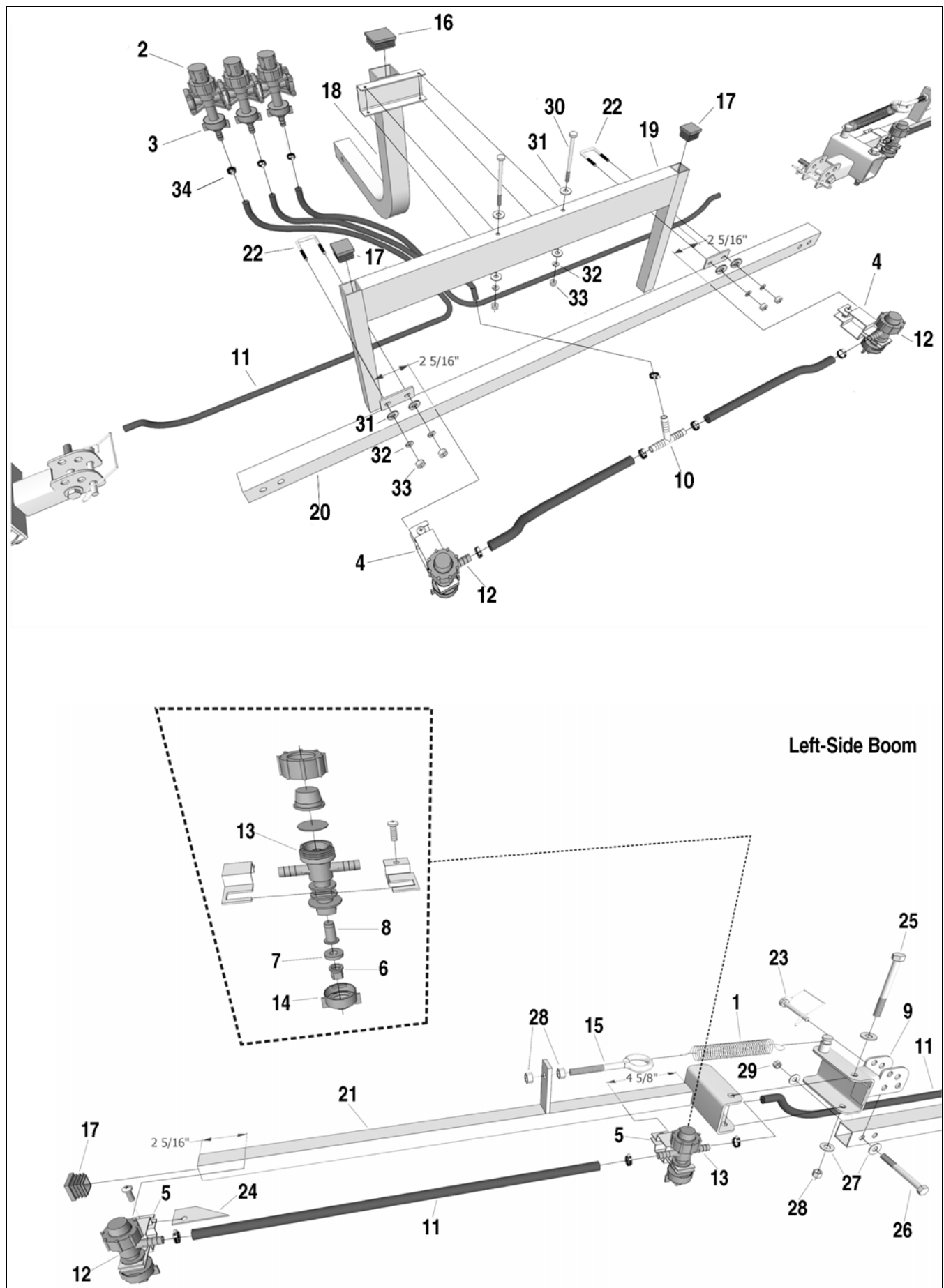
\* Not Illustrated

Illustration on page 3 of this instruction

**Speedrack Rack-Mounted Sprayer Illustration**

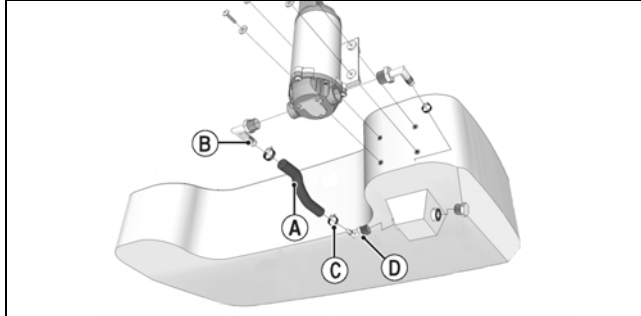


# 120" Folding Boom Illustration



1. Position Tank onto the rear rack and secure using two Pins.
2. Secure Pump to the front left-side of tank using four Machine Screws (10/24 x 1-in.) and four Flat Washers. Tighten securely.
3. Connect Suction Hose (A) (precut in kit) to pump from bottom of the tank using one Hose Barb Elbow (1/2) (B), Hose Barb Elbow (3/8 x 1/2) (D) and two Hose Clamps (C). See Fig. 1.

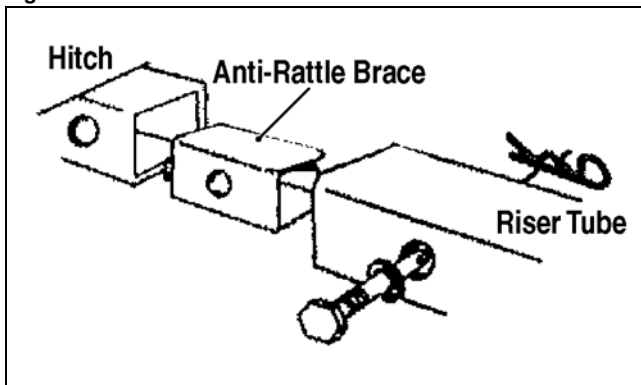
**Fig. 1**



ATV-3035A

4. Secure Manifold Bracket to back of tank using three Machine Screws; then attach Manifold to manifold bracket using four machine screws, eight flat washers, and four Nylock Nuts.
5. On the bottom of the Manifold below the gauge port, install the Nozzle Cap; then install close nipple to the nozzle cap.
6. Install the discharge side of Strainer on the close nipple and on the inlet side of strainer install a Hose Barb Elbow (1/4 x 3/8).
7. Connect pressure line from pump to the strainer using two hose clamps; then use two One Hole Clamps on the underside of the tank to secure hose.
8. Connect Wand Hose to the red valve body; then connect Spray Wand to the end of the hose using hose clamps (#4) on each end.
9. Secure Hose Carrier to the tank using two Machine Screws (10/24 x 1/2).
10. Install Anti-Rattle Brace to the bottom end of Riser Tube; then mount the riser tube into hitch and secure using cap screw and pin. Tighten securely. See Fig. 2.

**Fig. 2**



ATV-3037A

11. Secure Main Frame to the riser tube using two Cap Screws (1/4 x 3 1/4), four Flat Washers, two Lock Washers (1/4), and two Nuts (1/4). Tighten securely.
12. Secure Center Frame using two U-Bolts (tabs up), two flat washers, two lock washers (1/4) and two nuts (1/4) to the outside vertical tubes on the main frame. Tighten securely.

13. Install left and right Hinge Plates using two Cap Screws (3/8 x 2) two flat washers, and two Nyloc Nuts. Tighten enough for parts to move freely.
14. Secure Outside Frames to the bottom inside holes on the hinge plates using two Cap Screw (3/8 x 3 1/4), four flat washers (3/8), and two nyloc nuts (3/8).
15. Install Eye Bolt on left and right end booms using two nuts (3/8); then install Spring from the eye bolt to the notched pin on the hinge plate on outside booms.
16. Install a two inch Plug on top of riser tube and ends of the outside booms.
17. Install two Single Nozzles on the center boom measuring 10 inches from left and right of center (20 inch spacing) and one Double Nozzle on both right and left boom measuring 20" from the nozzle body on the center boom. Install a single nozzle on the end of left and right boom at 20" spacing.

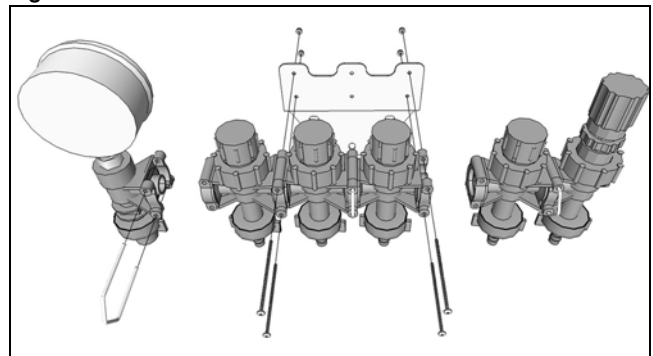
**■ NOTE: Two Bumper Guards have been supplied for installation on only the outer two nozzles. Bumper guards are installed between the upper and lower nozzle clamps.**

18. Cut Spray Hose to two lengths of 64 inches (which connects the outer boom), one to 32 inches (which connects the center boom), and three to 19 inches (which connects nozzle to nozzle).

**■ NOTE: Cut one of the 19 inch length hoses in half which will be connected using a Tee.**

19. Cut hose to fit from boom valve assembly to the inside double nozzle body on the left and right outside boom. Cut hose to fit from this nozzle to the end nozzle (20" spacing) on the wing ends.
20. Use Hose Clamps to secure each hose connection to the barbed fittings.
21. Assemble the manifold according to the illustration below. See Fig. 3.

**Fig. 3**



ATV-3066

22. See Figure 5 showing kit fully assembled.
23. Test system with water before adding chemical.

Fig. 5

