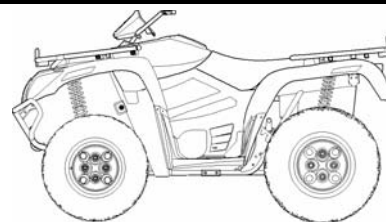


# Arctic Cat® ATV

## Installation Instructions - Accessory Kit

**WindPro Windshield Kits (p/n 0505-562,667,669,617 & 1436-233,234,235,236,536/537,538,539,541,542,668, 819,820)**



**NOTE: Read these Installation Instructions thoroughly before beginning the installation process. Retain these Installation Instructions for future reference.**

### Kit includes:

Ref. No.	p/n	QTY	DESCRIPTION
1	0405-333	1	Windshield
2	0405-332	1	Dashboard
3	****	2	Mounting Bracket
4	****	2	Taper Pin
5	0405-351	2	Half Clamp****
6	1441-839	1	Flashlight
7	0405-353	1	Flashlight Plug
8	0641-897	1	Power Outlet (12V)
9	0486-319	1	Wiring Harness
10	1436-713	1	Plastic Mirror Kit (Pair)
	**	2	Mirror Cap
	**	2	Flange Nut (M8)
	**	2	Cap Screw (M8)
	1436-324	1	Hardware Kit
	1441-902	2	Plastic Knob
	*	2	Cap Screw (M5)
	*	2	Nyloc Nut (M5)
	*	6	Torx-Head Cap Screw
	*	4	Nyloc Nut (M8)
	*	4	Flange Bolt (M8)
	*	4	Flat Washer (Large)
	*	2	Rubber Flat Washer
	*	4	Flat Washer (Small)
	1436-313	6	Plastic Clip
11	0505-554	1	Front Fairing (p/n 0505-562)
	0505-556	1	Front Fairing (p/n 1436-541)
	0405-327	1	Front Fairing (p/n 1436-536)
	0405-325	1	Front Fairing (p/n 1436-537)
	0405-326	1	Front Fairing (p/n 1436-538)
	0405-324	1	Front Fairing (p/n 1436-539)
	1411-987	1	Front Decal (H2)
	1411-988	1	Front Decal (700 H1)
	1411-989	1	Decal (H2 & 700 H1)
	8611-267	1	Decal (Aircat)***
	1436-821	1	Right, Left, and Aircat Decal***
	0453-589R	1	Instructions

\* Included in Hardware Kit (p/n 1436-324) – not a service part

\*\* Included in Plastic Mirror Kit (p/n 1436-326)

\*\*\* Included in Kits (p/n 1436-233-820)

\*\*\*\* Included in Bracket Kit (p/n 1436-545)

1. Install Flashlight Plug into the Dashboard by squeezing the rubber ring and inserting into the formed slots. See Fig. 2.

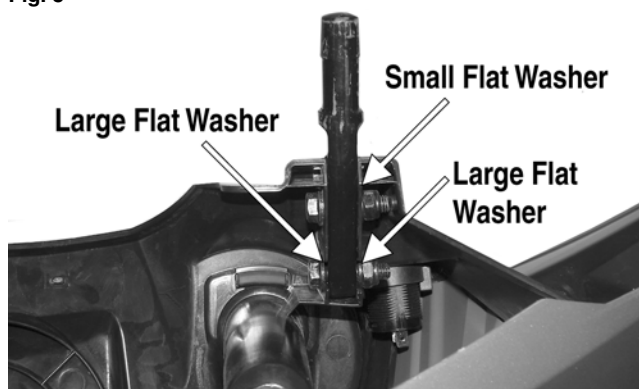
Fig. 2



ATV-1147

2. Install 12V Power Outlet into Dashboard; then connect Wiring Harness to the power outlet.
3. Secure Taper Pin to the dashboard using two Flange Bolts (M8), two Large Flat Washers, one Small Flat Washer, and two Nyloc Nuts (M8). Do not fully tighten at this time. See Fig. 3.

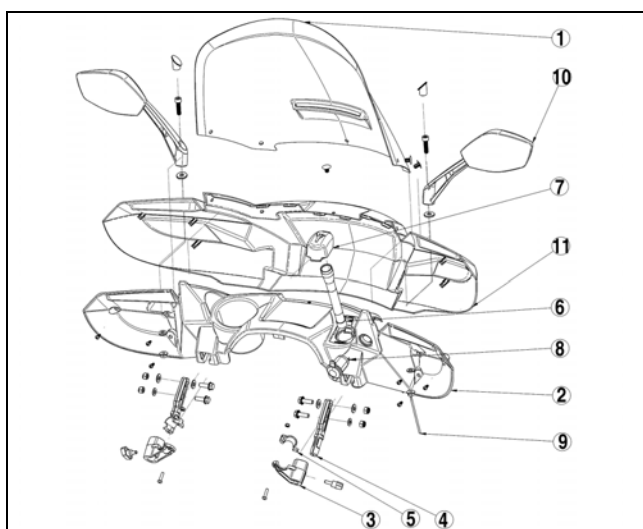
Fig. 3



ATV-1142A

**NOTE: The four large flat washers may come in a separate package.**

4. Repeat step 3 for opposite side.
5. Position Mounting Bracket onto the right-side handlebar and secure with Half Clamp, Cap Screws (M5), Nyloc Nuts (M5), and Plastic Knob. Do not fully tighten at this time.



ATV-1139A

6. Repeat step 5 for opposite side.

### CAUTION

Be sure to position the mounting bracket so it does not interfere with any other ATV components.

7. Align the dashboard so both taper pins slide into the mounting brackets; then secure all hardware.

■ **NOTE:** Mounting brackets should be positioned at the same height on each side of the pod to avoid stress on either bracket. Too much stress may cause either to break.

8. Remove the dashboard from the mounting brackets.

9. Secure Front Middle of the Fairing to the dashboard using one Plastic Clip (see Fig. 7); then secure using six Torx-Head Cap Screws. Do not over-tighten. See Fig. 4.

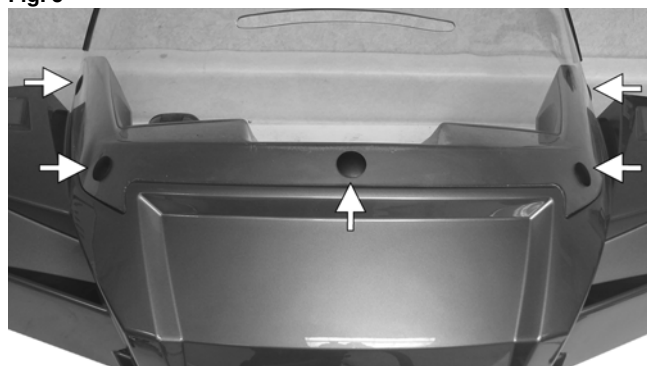
Fig. 4



ATV-1144A

10. Install Windshield onto front fairing and secure with five plastic clips. See Fig. 5.

Fig. 5

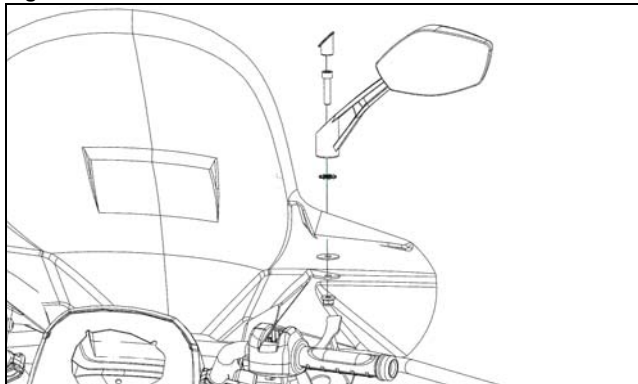


ATV-1141A

11. Secure Mirror to windshield using one Screw (through the mirror), Serrated Washer, windshield, Rubber Washer, windshield bracket, and Nut; then position mirror to desired location and tighten securely. See Fig. 6.

12. Install Plug and repeat for opposite side.

Fig. 6



ATV-3062

13. Clean the intended Decal locations, then install both Front Decal and the 4x4 Decal.

■ **NOTE:** For accessory kits (p/n 1436-233-236) Front Decal (Aircat) will be placed on the front fairing indicated below. Right- and Left-Side Decals will adhere to the front fairing in the location indicated below. See Fig. 7

Fig. 7



ATV-1145A

14. Install Flashlight into the flashlight holder. Two AA batteries are required.