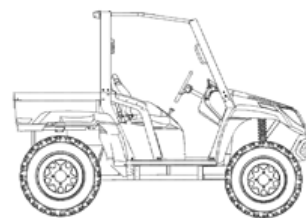


Arctic Cat® Prowler

Installation Instructions - Accessory Kit

Door Kit (p/n 1436-526/574)



■ **NOTE:** Read these installation instructions thoroughly before beginning the installation process. Retain these Installation Instructions for future reference.

p/n	QTY	DESCRIPTION
0541-905	1	Door Assembly w/Sliding Window (Left)
0541-904	1	Door Assembly w/Sliding Window (Right)
2441-305	1	Door only w/Sliding Glass (Left) (A)
2441-306	1	Door only w/Sliding Glass (Right) (B)
0541-945	1	Standard Door Assembly (Left)
0541-944	1	Standard Door Assembly (Right)
0541-787	1	Hinge Plate (Left-Side) (C)
0541-786	1	Hinge Plate (Right-Side) (D)
2441-205	1	Striker Mounting Panel (Left-Side) (E)
2441-204	1	Striker Mounting Panel (Right-Side) (F)
2441-207	1	Bottom Right Door Hinge (G)
2441-213	1	Top Right Door Hinge (H)
2441-212	1	Top Left Door Hinge (I)
2441-206	1	Bottom Left Door Hinge (J)
2441-209	2	Lower Door Glass
2441-211	2	Outside Handle
2441-219	1	Left-Side Sliding Window Assembly
2441-220	1	Right-Side Sliding Window Assembly
1436-570	1	Hardware Kit
1441-448	4	Brass Washer
1441-442	4	Nutsert
0453-684	1	Instructions

Illustration is on page 3.

■ **NOTE:** When the doors are not installed, the side restraints must be installed and used.

- Using a T-40 wrench, remove the two upper (account for two t-nuts) and two lower torx-head screws from the right-side and left-side front ROPS tubes.

■ **NOTE:** The upper screws are located on the outside of the ROPS tube next to the bottom of the windshield and the lower screws are located on the outside of the ROPS frame tube near the floor.

- Position left Hinge Plate flush against the front ROPS tubes and secure with existing torx-head screws (threads coated with blue Loctite #243) and T-nuts removed in step 1. Tighten only one top screw at this time. Do not tighten the remaining screws at this time since the door may need to be adjusted later.

■ **NOTE:** If a windshield is also being installed, refer to Windshield Kit (p/n 1436-278) and complete the installation of the windshield before continuing with the installation of the doors.

- Repeat step 2 for opposite side. See Fig. 1.

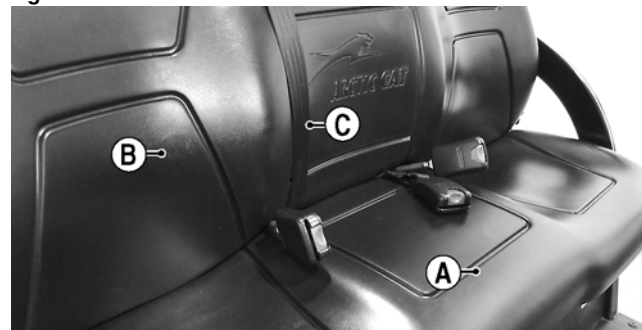
Fig. 1



UTV-267A

- Lift up and remove the seat (A) and set aside; then with the cargo box raised, remove and retain the four cap screws securing the seat backrest (B) to the frame. **Note how the middle seat belt strap is routed for installation purposes (C).** See Fig. 2.

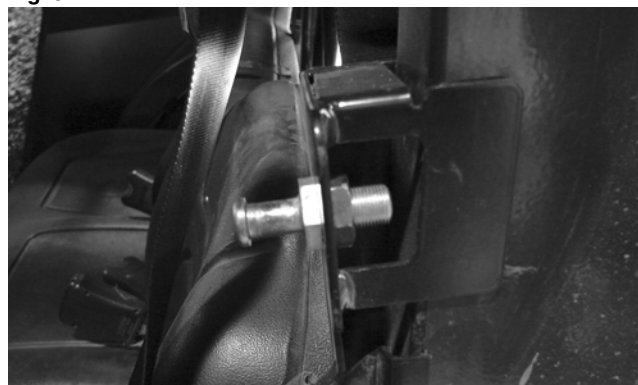
Fig. 2



UTV-166A

- Install Striker Bolt onto the left Striker Mounting Panel using Hex Nut. Do not tighten at this time. See Fig. 3.

Fig. 3



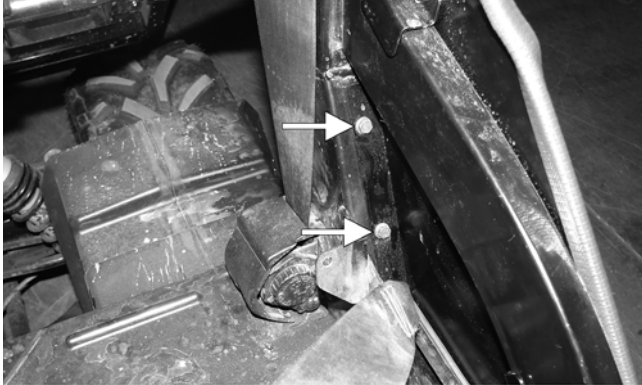
UTV-250

6. Install two Nutserts into the pre-cut hexagonal shaped holes located on the downward angled rectangular tube under the arm rest.

■ **NOTE:** The nutserts will self-tighten inside the rectangular tube as the screws are tightened.

7. Position the striker mounting panel against the two nutserts; then secure the striker mounting panel using two Flange Cap Screws. Tighten securely. See Fig. 4.

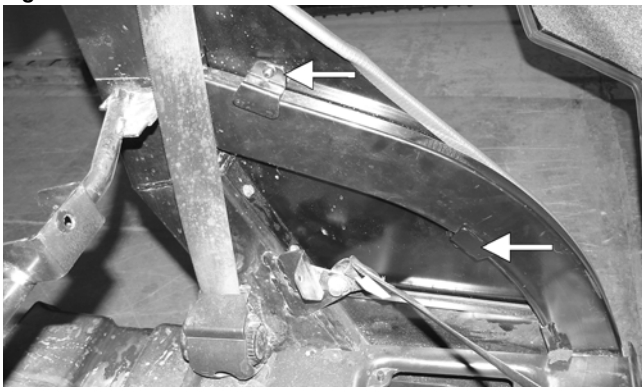
Fig. 4



UTV-170A

8. Secure the upper portion of the striker mounting panel to the arm rest using two Clips, two Machine Screws and two Nuts. Tighten securely. See Fig. 5.

Fig. 5



UTV-169A

9. Place Brass Washer onto each of the two door hinges; then install the left-side door.

■ **NOTE:** To aid in the installation of the door, it may be necessary to open and close the door as the door is pushed downward onto the hinges.

10. Adjust the hinge plate until the bottom edge of the door is level with the lower frame tube. Tighten the upper and lower torx-head screws on the hinge plate to 20 ft-lb (threads coated in blue Loctite #243).
11. Repeat steps 4-9 for right-side door.
12. With both doors installed, adjust the striker bolt until the doors latch properly. Securely tighten the striker bolts.

■ **NOTE:** If door assemblies still do not latch. The nuts securing the door to the hinge may need to be re-adjusted. See Fig. 6.

Fig. 6

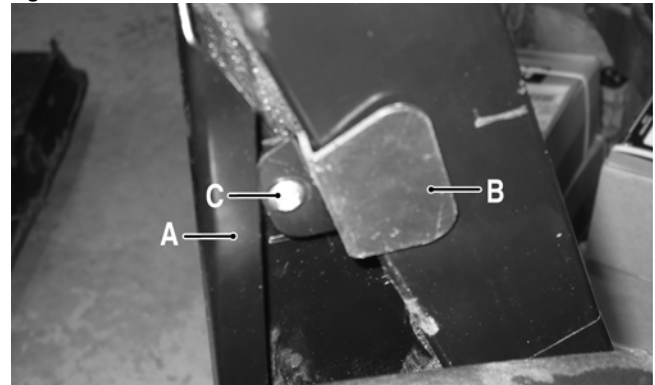


UTV-251A

13. Install Clip (B) inside Hinge Plate (A). Secure with Torx-Head Screw (C) and hex nut. See Fig. 7.

■ **NOTE:** The clip will secure hinge plate to front ROPS tube.

Fig. 7



OHUV-073

14. Secure the seat back to the frame using existing four cap screws. Torque to 8 ft-lb.

■ **NOTE:** When installing the seat back, be sure to route the middle seat belt strap on the outside of the seat back. See Fig. 8.

Fig. 8



UTV-166B

15. Install the seat and latch the cargo box.

