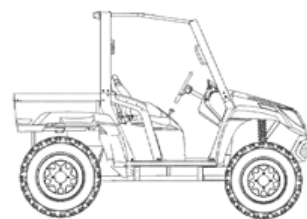


Arctic Cat® UTV

Installation Instructions - Accessory Kit

Door Kits (p/n 1436-059 and 1436-060)



■ **NOTE:** Read these installation instructions thoroughly before beginning the installation process. Retain these Installation Instructions for future reference.

Application:

All 2006-2008 Prowler Models

Included in Kit (p/n 1436-059):

p/n	QTY	DESCRIPTION
0541-642	1	Solid Glass Door Kit (Right Side)
0541-684	1	Hinge Plate *
0541-680	1	Door Assembly w/Solid Glass (Right Side)*
1436-146	1	Hardware Kit *
0541-643	1	Solid Glass Door Kit (Left Side)
0541-685	1	Hinge Plate **
0541-681	1	Door Assembly w/Solid Glass (Left Side)**
1436-146	1	Hardware Kit **
0453-502	1	Instructions

* Included in Kit (p/n 0541-642)

** Included in Kit (p/n 0541-643)

Included in Kit (p/n 1436-060)

0541-644	1	Sliding Glass Door Kit (Right Side)
0541-684	1	Hinge Plate *
0541-676	1	Door Assembly w/Slider Window (Right Side)*
1436-146	1	Hardware Kit *
0541-645	1	Sliding Glass Door Kit (Left Side)
0541-677	1	Door Assembly w/Slider (Left Side)**
1436-146	1	Hardware Kit **
0541-685	1	Hinge Plate**
0453-502	1	Instructions

* Included in Kit (p/n 0541-644)

** Included in Kit (p/n 0541-645)

- Position left-side Hinge Plate (A) flush against the front canopy frame tubes and secure with screws removed in step 1. Tighten only the top screw at this time. Do not tighten the remaining screws at this time since the door may need to be adjusted later. See Fig. 1.

■ **NOTE:** If a windshield is also being installed, refer to Windshield Kit (p/n 1436-004/006) and complete the installation of the windshield before continuing with the installation of the doors.

- Install the striker bolt onto the striker mounting plate using washers and hex nut. Do not tighten at this time.

■ **NOTE:** The striker bolt should be installed outside the center bend on the under the arm rest.

- Install two inserts into the pre-cut hexagonal shaped holes located on the downward angled rectangular tube under the arm rest.

■ **NOTE:** The inserts will self-tighten inside the rectangular tube as the screws are tightened.

- Position the striker mounting plate with the striker bolt facing forward and the front face of the plate in a vertical position.
- Position the striker plate against the two inserts; then secure the striker plate using two flange screws. Tighten securely.
- Place a brass washer onto each of the two door hinges; then install the left-side door.

■ **NOTE:** To aid in the installation of the door, it may be necessary to open and close the door as the door is pushed downward onto the hinges.

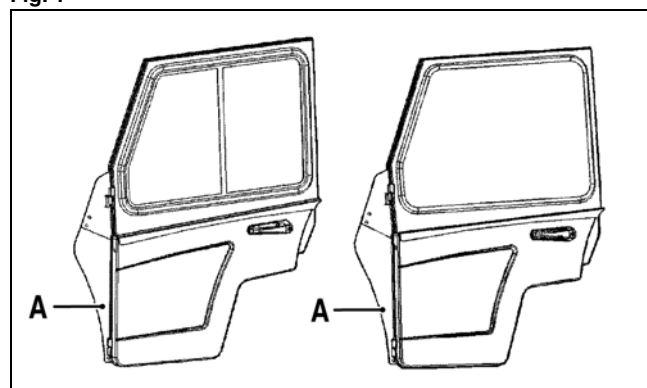
- Adjust the door panel until the bottom edge of the door is level with the lower frame tube. Tighten the upper and lower torx-head screws on the panel post to 20 ft-lb.

- Repeat steps 1-8 for right-side door.

- With both doors installed, adjust the striker bolt until the doors latch properly. Securely tighten the striker bolts.

- Install Clip (B) inside Hinge Plate (A). Secure with Torx-Head Screw (C) and hex nut. See Fig. 2.

Fig. 1



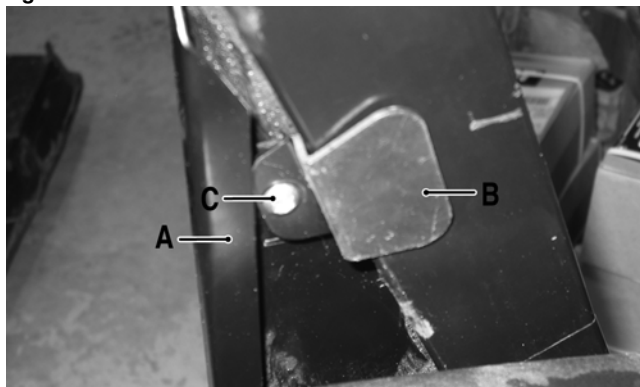
0742-794A

- Using a T-40 wrench, remove the two upper and two lower torx-head screws from the left-side front canopy frame tubes.

■ **NOTE:** The upper screws are located on the outside of the canopy frame tube next to the bottom of the windshield and the lower screws are located on the outside of the canopy frame tube near the floor board.

■ NOTE: Clip will secure plate to Frame.

Fig. 2



OHUV-073

