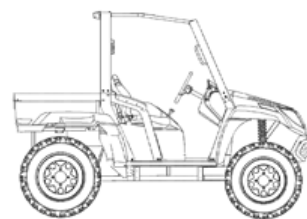


Arctic Cat® OHUV

Installation Instructions - Accessory Kit

Windshield Wiper Kit (p/n 0436-920)



■ **NOTE:** Read these installation instructions thoroughly before beginning the installation process. Retain these Installation Instructions for future reference.

Kit includes:

Ref. No.	p/n	QTY	DESCRIPTION
1	1441-550	1	Rocker Switch
2	0486-239	1	Wire Harness w/Fuse
3	0630-103	1	Fuse (5 amp) ***
4	1441-546	1	Wiper Motor (12V)
5	1441-551	1	Hex Nut *
6	8007-427	1	Machine Screw (10-24 x 1/2 in.)
7	8040-247	3	Self-Locking Nut (10-24 mm)
8	1441-548	1	Wiper Arm
9	1441-586	1	Pivot-Ball Holder **
10	8007-430	1	Machine Screw (10-24 x 3/4 in.)
11	0423-377	1	Lock Washer (External Tooth)
12	1441-552	1	Grommet
13	1441-549	1	Wiper Blade (16 in.)
	0453-422	1	Instructions

* Included with wiper motor

** Included with wiper arm

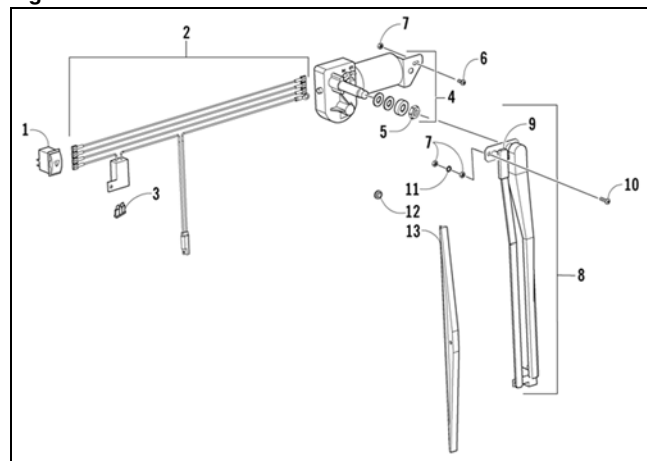
*** Included with wire harness

Application:

2006 Prowler XT

2007 Prowler/ Prowler XT

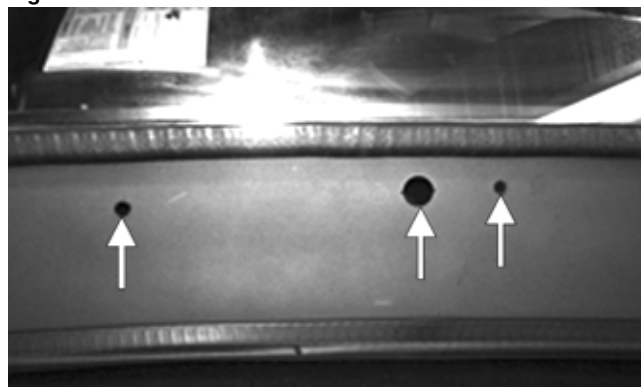
Fig. 1



0742-202

1. From outside the lower windshield panel, carefully remove the three knockout tabs located on the left side of the lower windshield using a punch and a small hammer. See Fig. 2.

Fig. 2

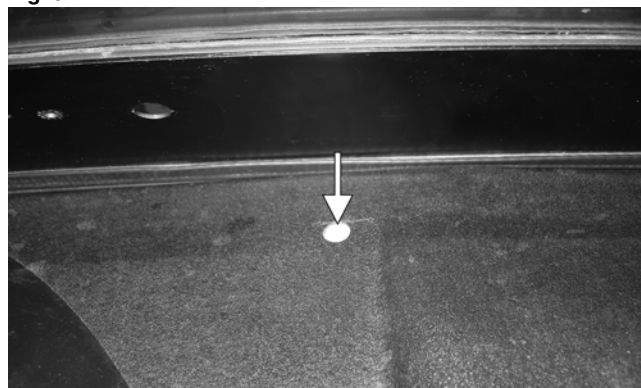


OHUV-025

■ **NOTE:** Be careful not to damage the panel.

2. Locate the center of the dash; then drill a 11.11 mm (7/16 in.) hole in the center of the dash with the center of the hole located 1 1/2 in. from the lower windshield panel and 6 1/2 in. to the left of the dash center. See Fig. 3.

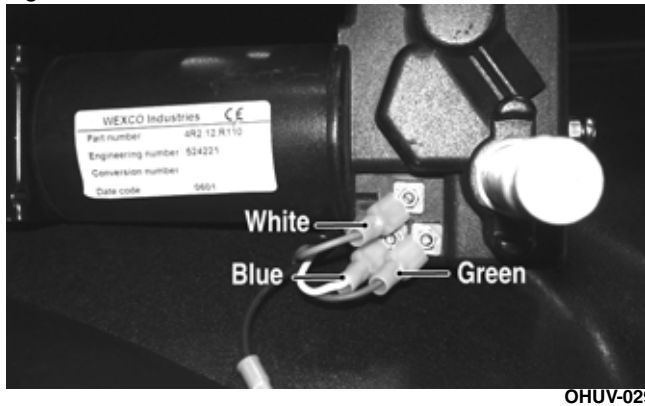
Fig. 3



OHUV-026A

3. From beneath the dash, route the three flat terminals and the single-ring terminal on Harness (p/n 0486-239) through the 7/16 in. hole in the dash; then insert the four terminals w/wires through rubber Grommet (p/n 1441-552) and insert the grommet into the 7/16 in. hole in the dash.
4. Connect the appropriate harness wire terminals to the three flat terminals on Wiper Motor (p/n 1441-546). See Fig. 4.

Fig. 4



■ **NOTE:** Connect the green wire to the lower right terminal, the white wire to the upper left terminal, and the blue wire to the lower left terminal.

5. Install Wiper Blade (p/n 1441-549) to Wiper Arm (p/n 1441-548) by inserting the blade into the bracket at the end of the arm making sure the blade is seated inside the plastic protector.
6. Insert the small shoulder screw through the wiper arm bracket, plastic protector, and the blade and secure with the small nyloc nut.

■ **NOTE:** The shoulder screw and nyloc nut are with the kit. Be sure the shoulder of the screw is all the way through the blade and wiper arm bracket before tightening the nut to allow the blade to pivot freely.

7. Install the 3/4 in Phillips-Head Machine Screw (p/n 8007-430) through the wiper arm support bracket (attached to the base of the wiper arm); then secure with Self-Locking Hex Nut (p/n 8040-247) on the back side of the support bracket. See Fig. 5.

Fig.5



■ **NOTE:** The wiper arm (not pictured) will be attached to the support bracket. Do not remove the wiper arm from the support bracket.

8. From inside the windshield panel, insert Wiper Motor (p/n 1441-546) to the lower windshield panel by inserting the wiper motor shaft through the large panel knockout.

9. On the outside of the windshield panel, insert the two rubber washers, cupped washer (with cupped side seated over the rubber washers), and the wiper support bracket onto the motor shaft. The rubber washers and cupped washer are provided with the wiper motor.

■ **NOTE:** Be sure to leave the main pivot point on the wiper arm loose at this time. The wiper arm support bracket screw should be inserted through the lower panel.

10. Secure the right side of the wiper motor to the lower panel with 1/2 in Machine Screw (p/n 8007-427) and Self-Locking Hex Nut (p/n 8040-247).
11. Secure the wiper motor shaft to the panel with the large nut provided with wiper motor.
12. Insert External Tooth Lock Washer (p/n 0423-377) followed by the round terminal (black wire) onto the left-side screw; then secure the ground wire with remaining self-locking nyloc nut.
13. Route the wire harness toward the 2-wire molded plug located next to the key switch beneath the dash; then connect the 2-wire (red and black) molded plug on the wiper harness into the molded plug on the main harness.

■ **NOTE:** If the 2-wire molded plug next to the key switch is already used for another accessory, it will be necessary to use an accessory adapter. Use either the 2-outlet Adapter (p/n 1639-623) or the 3-outlet Adapter (p/n 1639-624).

14. Cut out the center section of Template 0742-170; then cut out the template by cutting along the dotted lines. Position the template on the dash with the left-side dotted line flush with the right edge of the main switch panel on the dash. Trace the outline of the cutout section on the dash; then remove the template. Using a router bit, cut out the switch mounting hole in the dash; then remove burrs from the edges of the mounting hole. See Fig. 6 For rocker switch mounting location.

■ **NOTE:** Template 0742-170 is located on page 3.

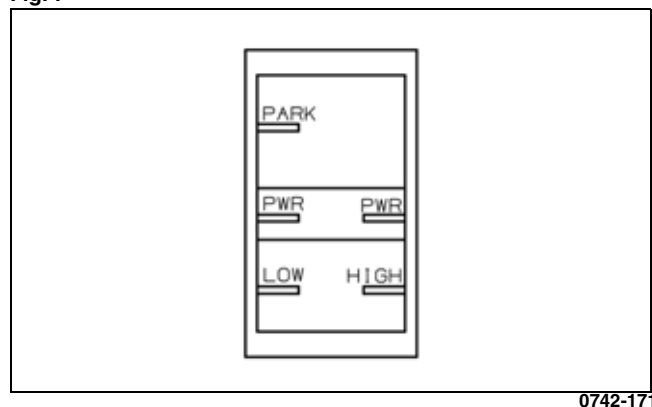
Fig.6



■ **NOTE:** If more than one switch is to be added to the dash, Use Switch Panel Kit (p/n 1436-008).

15. Route the remaining wires from the wiper motor harness through the switch mounting hole in the dash; then connect the white wire to the “Park” terminal on the switch, the red wire to one of the “PWR” terminals, the blue wire to the “Low” terminal, and the green wire to the “High” terminal on the switch. Snap the switch into the dash or switch panel. See Fig. 7 for identification of terminals.

Fig. 7



0742-171

16. With the ignition switch in the OFF position, lightly press the wiper arm and blade assembly onto the motor shaft in the left-side position (viewed from driver's seat).

■ **NOTE:** The wiper arm will need to be in this position so adjustments can be made to ensure that the wiper blade moves freely and does not come into contact with other components.

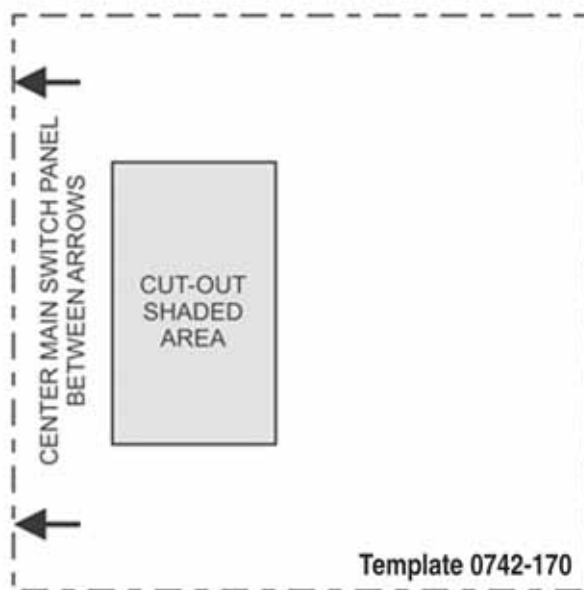
17. Adjust the wiper blade making sure it is no closer than 1/2 in. from the windshield edge or other components along the windshield edge when the wiper is in the “Park” position.

■ **NOTE:** If the wiper blade is not centered properly while sweeping, turn off the wiper and ignition switch. Pull the wiper arm/blade assembly off the shaft and adjust it until it is centered while sweeping. When the blade has been satisfactorily adjusted, manually press the wiper arm firmly onto the shaft.



CAUTION

Avoid lifting the center of the blade more than three in. away from the windshield. Damage to the wiper arm may occur, especially in cold weather.



Template 0742-170

