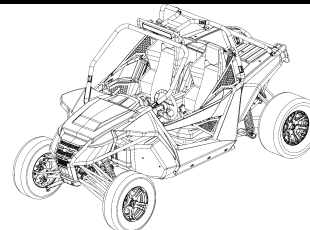


# Arctic Cat® Wildcat

## Installation Instructions - Accessory Kit

### Aluminum Front Bumper Kit

(p/n 1436-684)



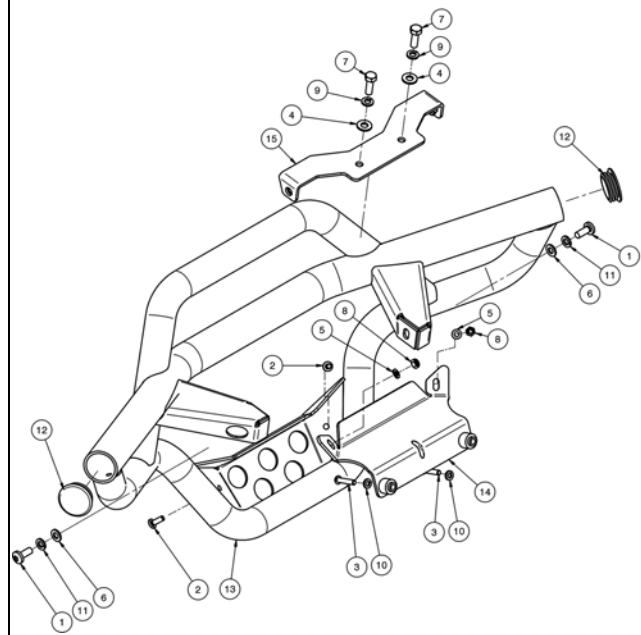
■ **NOTE:** Read these Installation Instructions thoroughly before beginning the installation process. Retain these Installation Instructions for future reference.

#### Application: 2013 Wildcat

##### Kit includes:

Ref. No.	p/n	QTY	DESCRIPTION
1	*	2	Torx-Head Screw (M8 x 20 mm)
2.	*	2	Torx-Head Screw (M6 x 16 mm)
3	*	2	Torx-Head Screw (M6 x 30 mm)
4	*	2	M8 Black Flat Washer
5	*	2	M6 Zinc Flat Washer
6.	*	2	M8 Zinc Flat Washer
7	*	2	M8 Cap Screw
8	*	2	M6 Nut
9	*	2	M8 Lock washer
10	*	2	M6 Lock Washer
11	*	2	M8 Spring Lock Washer
12	0541-041	2	Plastic Cap
13	N/A	1	Front Bumper
14	2441-165	1	Bottom Mounting Plate
15	2441-166	1	Upper Mounting Plate
N/A	0453-833	1	Instruction

\* Included in Hardware Kit (p/n 0541-059)



1. Remove the torx-head screws securing the front fascia to the frame. See Fig. 1.

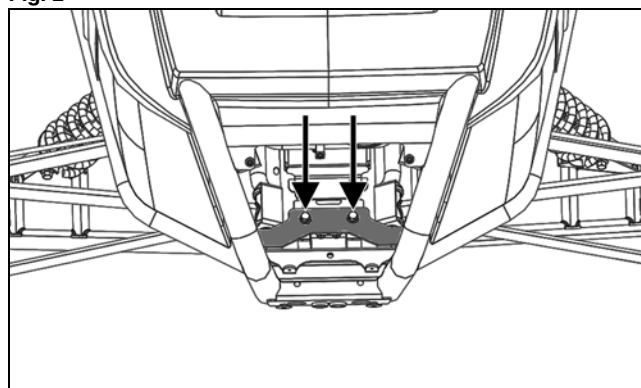
Fig. 1



ROV-014A

2. Secure Upper Mounting Plate to the frame using two M8 Cap Screws, two M8 Zinc Flat Washers, and two M8 Nuts. Tighten to 18 ft-lb. See Fig. 2.

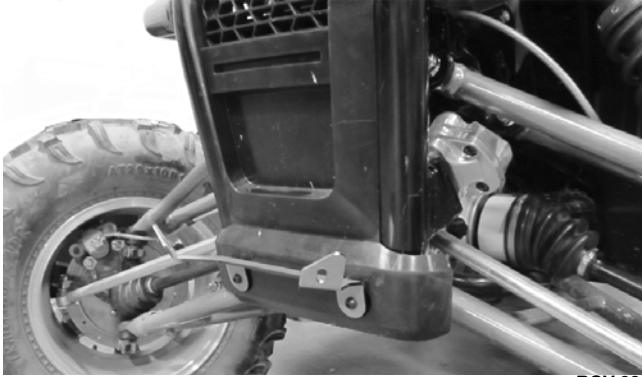
Fig. 2



ROV-176A

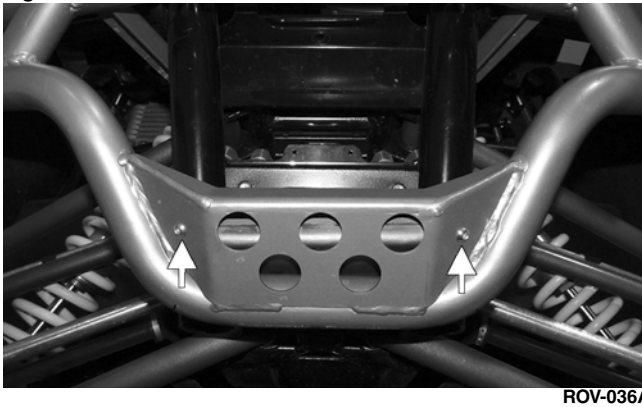
3. Install the front fascia and secure to the frame using only the existing top torx-head screws (from step 1); then secure Bottom Mounting Plate using two Torx-Head Screws (M6 x 30 mm), and two Lock Washers into the bottom mounting locations for the front fascia. Tighten to 90 in.-lb. See Fig. 3.

Fig. 3



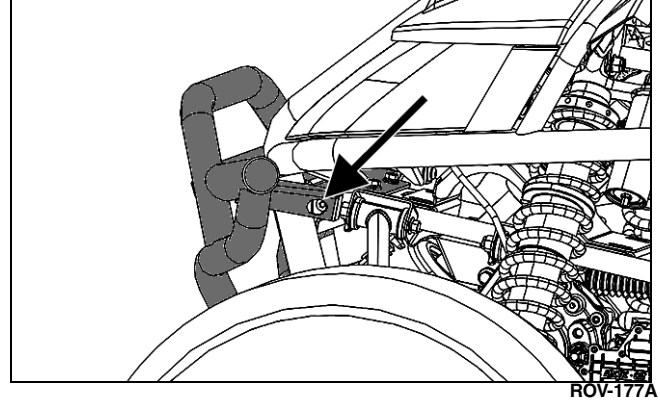
4. Position Bumper and secure to Bottom Mounting Plate using two Torx-Head Screws (M6 x 16 mm), two M6 Flat Washers, and two M6 Nuts. Finger tighten only at this time. See Fig. 4.

Fig. 4



5. Secure the bumper to the upper mounting bracket using two Torx-Head Screws (M8 x 20 mm), two Spring Lock Washers, and two M8 Flat Washers. Tighten to 23 ft-lb. See Fig. 5.

Fig. 5



6. Tighten the torx-head screws from step 4 to 100 in.-lb; then verify all hardware is tight.

