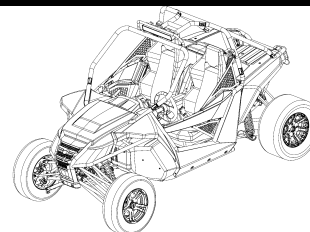


Arctic Cat® Wildcat

Installation Instructions - Accessory Kit

Steel Front Bumper Kit

(1436-686)



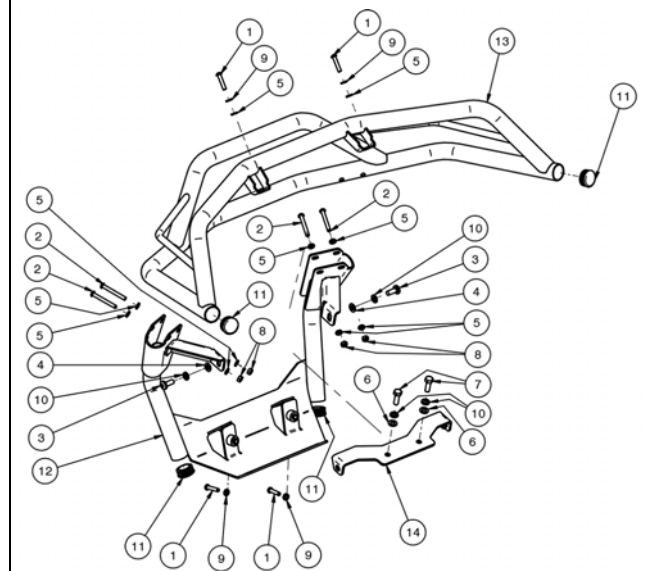
■ **NOTE:** Read these Installation Instructions thoroughly before beginning the installation process. Retain these Installation Instructions for future reference.

Application: 2013 Wildcat

Kit includes:

Ref. No.	p/n	QTY	DESCRIPTION
1	*	4	Torx-Head Screw (M6 x 30 mm)
2	*	4	Torx-Head Screw (M6 x 50 mm)
3	*	2	Torx-Head Screw (M8 x 20 mm)
4	*	2	M8 Black Flat Washer (16 mm OD)
5	*	10	M6 Black Flat Washer
6	*	2	M8 Black Flat Washer (17 mm OD)
7	*	2	M8 Cap Screw
8	*	2	M6 Nylon Nut
9	*	4	M6 Lock Washer
10	*	4	M8 Lock Washer
11	0541-041	4	Plastic Cap
12	2441-167	1	Lower Front Bumper
13	0541-038	1	Upper Front Bumper
14	2441-166	1	Upper Mounting Plate
N/A	0453-833	1	Instruction

* Included in Hardware kit (p/n 0541-060)



1. Remove and discard the four torx-head screws securing the front fascia to the frame. See Fig. 1.

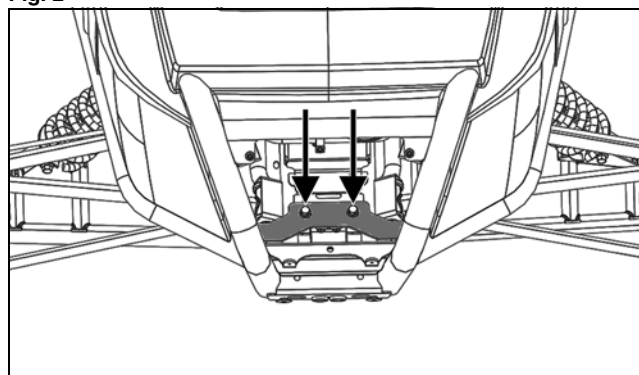
Fig. 1



ROV-014A

2. Secure Upper Mounting Plate (with side mounting tabs down) to the frame using two M8 Cap Screws, two M8 Black Flat Washers, two M8 Spring Lock Washers. Tighten to 18 ft-lb. See Fig. 2.

Fig. 2



ROV-176A

3. Position the front fascia on the vehicle; then secure Upper Front Bumper to the vehicle using two new Torx-Head Screws (M6 x 30 mm), two M6 Lock Washer, and two M6 Black Flat Washers. Tighten to 100 in.-lb. See Fig. 3.

Fig. 3



ROV-010A

4. Loosely secure Lower Front Bumper to Upper Front Bumper using four Torx-Head Screws (M6 x 50mm), eight M6 Black Flat Washers, and four M6 Nyloc Nuts. See Fig. 4.

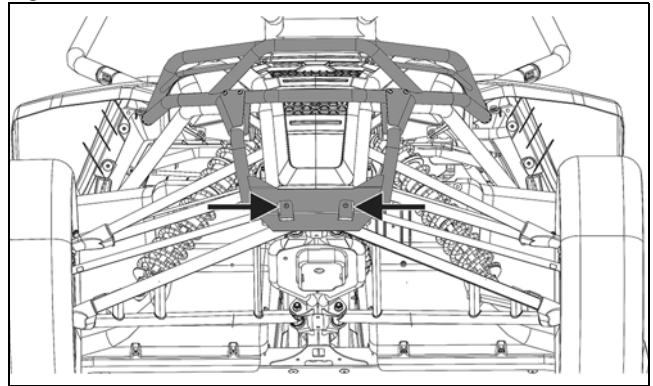
Fig. 4



ROV-011A

5. Loosely secure the lower portion of lower front bumper to the vehicle (through the front fascia) using two Torx-Head Screws (M6 x 30 mm). See Fig. 5.

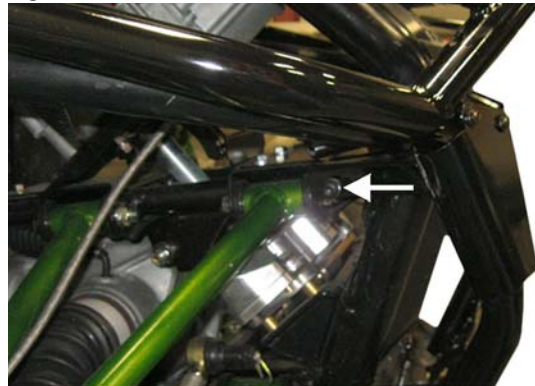
Fig. 5



ROV-174A

6. Secure the bumper to the upper mounting plate using two Torx-Head Screws (M8 x 20 mm) and two M8 black flat washers, and two M8 Lock Washers. Tighten to 23 ft-lb. See Fig. 6.

Fig. 6



ROV-013A

7. Tighten the torx-head screws from step 4 and step 5 to 100 in.-lb.

