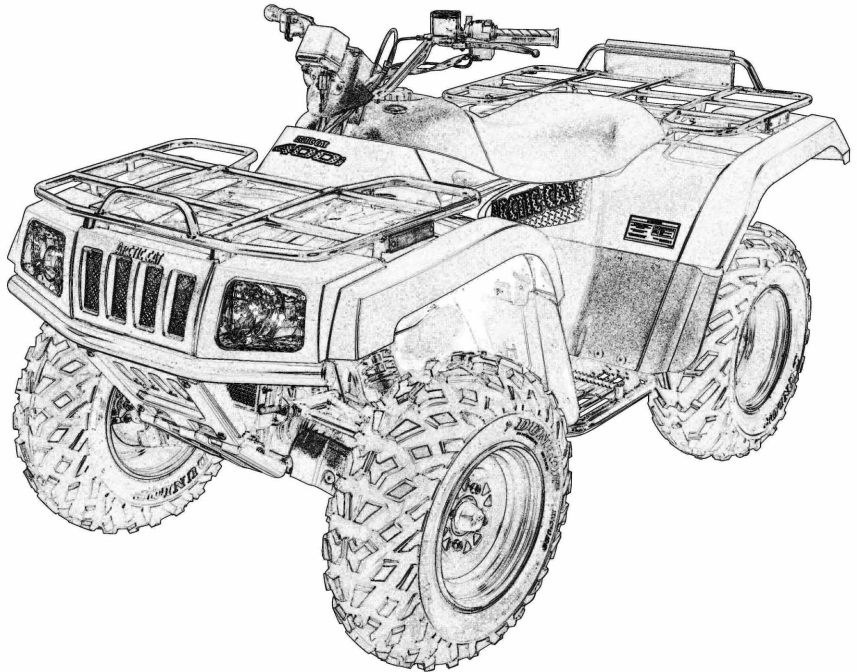


ATV
Illustrated Parts Manual
2003 ARCTIC CAT®



250 2x4 • 250 4x4

Model No.	A2003ATE2AUSR	(2x4 - Red)
Model No.	A2003ATE2AUSG	(2x4 - Green)
Model No.	A2003ATE4AUSR	(4x4 - Red)
Model No.	A2003ATE4AUSG	(4x4 - Green)

TABLE OF CONTENTS

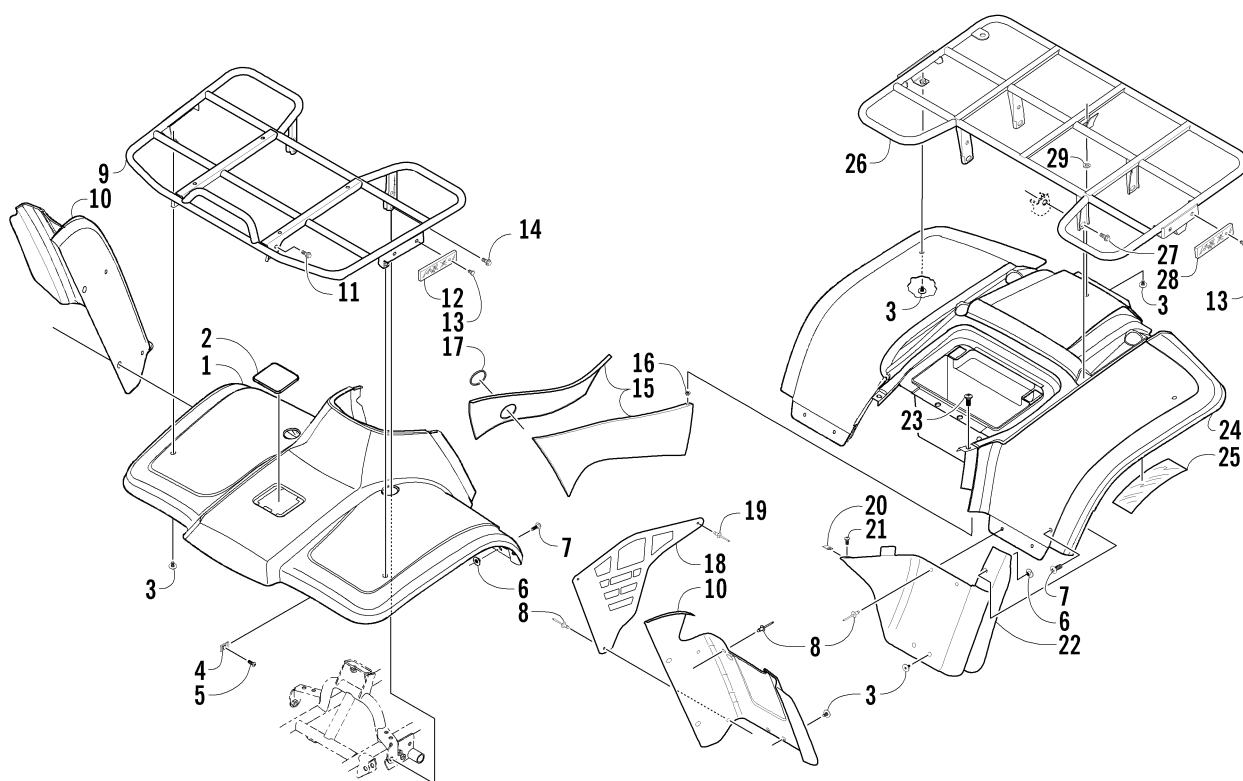
2003 ATV 250

2x4 Red (Model No. A2003ATE2AUSR)
4x4 Red (Model No. A2003ATE4AUSR)

2x4 Green (Model No. A2003ATE2AUSG)
4x4 Green (Model No. A2003ATE4AUSG)

BODY PANEL ASSEMBLY	1
TAILLIGHT ASSEMBLY	2
DECALS	3
FRAME AND RELATED PARTS	4
SEAT ASSEMBLY	5
STEERING ASSEMBLY	6
FRONT SUSPENSION ASSEMBLY	7
REAR SUSPENSION ASSEMBLY	8
WHEEL AND TIRE ASSEMBLY	9
AUXILIARY BRAKE ASSEMBLY	10
HYDRAULIC HAND BRAKE ASSEMBLY	11
HYDRAULIC BRAKE ASSEMBLY	12
GAS TANK ASSEMBLY	13
REVERSE SHIFT LEVER ASSEMBLY	14
AIR INTAKE ASSEMBLY	15
SHIFTER ASSEMBLY	16
FRONT DRIVE GEARCASE ASSEMBLY (4X4)	17
ENGINE AND RELATED PARTS	18
OIL COOLER ASSEMBLY	19
ELECTRICAL COMPONENTS	20
CARBURETOR	21
CYLINDER HEAD ASSEMBLY	22
CYLINDER ASSEMBLY	23
CRANKCASE ASSEMBLY	24
CRANKCASE COVER ASSEMBLY	25
CRANKSHAFT ASSEMBLY	26
STARTER CLUTCH ASSEMBLY	27
CAMSHAFT/VALVE ASSEMBLY	28
CAM CHAIN ASSEMBLY	29
RECOIL STARTER ASSEMBLY	30
OIL PUMP ASSEMBLY	31
CLUTCH ASSEMBLY	32
TRANSMISSION ASSEMBLY	33
SECONDARY TRANSMISSION ASSEMBLY	34
SECONDARY GEAR/OUTPUT SHAFT ASSEMBLY	35
GEAR SHIFTING ASSEMBLY	36
STARTER MOTOR ASSEMBLY	37
MAGNETO ASSEMBLY	38
CONTROL SWITCH HOUSING ASSEMBLY	39
THROTTLE CASE ASSEMBLY	40
RELATED ITEMS	Back Cover

■ **NOTE:** The illustrations used in this Parts Manual are for reference to replacement part numbers only and are not to be used for assembly. For assembly procedures, use an Arctic Cat Service Manual. Underlined part numbers are new for the 2003 model year.



BODY PANEL ASSEMBLY

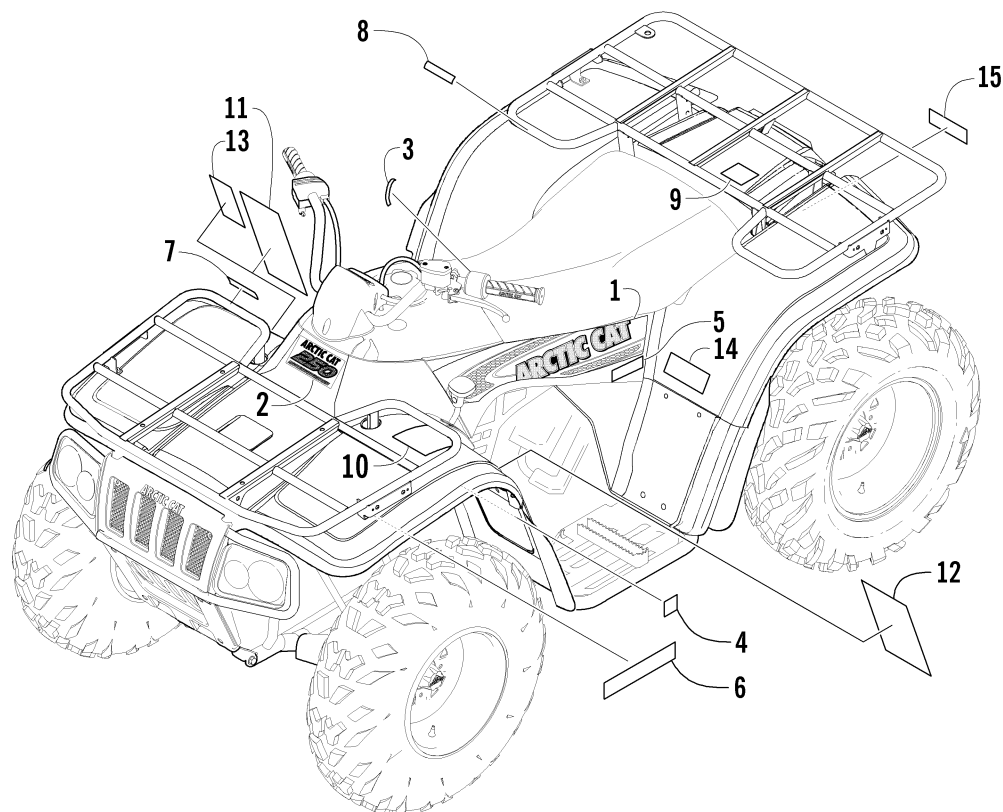
0737-453

Ref.	Part No.	Qty.	Description	Ref.	Part No.	Qty.	Description
1	0506-605	1	Panel, Fender - Front (inc. 2)	16	0123-010	2	Nut, Expansion
	0506-604	1	Panel, Fender - Front (inc. 2) (Green)	17	0470-404	1	Grommet, Gas Knob
2	<u>1406-142</u>	1	● Cover, Access	18	0406-374	2	Panel, Deflector
	<u>1406-141</u>	1	● Cover, Access (Green)	19	0623-362	2	Rivet, Plastic
3	0423-101	AR	Screw, Body	20	0423-060	2	Clip, Tinerman
4	0423-031	2	Nut, Speed	21	0623-309	2	Screw, Self-Tapping
5	8477-616	2	Screw, Machine	22	0406-084	1	Fender Extension - Rear - Right
6	0423-077	4	T-Nut		0406-085	1	Fender Extension - Rear - Left
7	8476-616	4	Screw, Shoulder	23	0423-068	2	Screw, Machine
8	0423-046	AR	Rivet, Plastic	24	0506-617	1	Panel, Fender - Rear
9	0506-525	1	Rack - Front		0506-619	1	Panel, Fender - Rear (Green)
10	0506-272	1	Panel, Kick - Right	25	0619-230	AR	Tape, Foil
	0506-629	1	Panel, Kick - Left	26	<u>0506-861</u>	1	Rack - Rear
11	0423-360	2	Screw, Cap	27	8409-020	4	Screw, Cap
12	0606-526	2	Reflector, Front - Amber	28	0606-029	2	Reflector, Rear - Red
13	0623-269	8	Clip, Retaining	29	0423-332	1	Washer, Rubber
14	8408-816	2	Screw, Cap				
15	0506-548	1	Panel, Side - Right				
	0506-243	1	Panel, Side - Left				
	0506-549	1	Panel, Side - Right (Green)				
	0506-673	1	Panel, Side - Left (Green)				



(Complete Taillight Assembly p/n 0409-002)

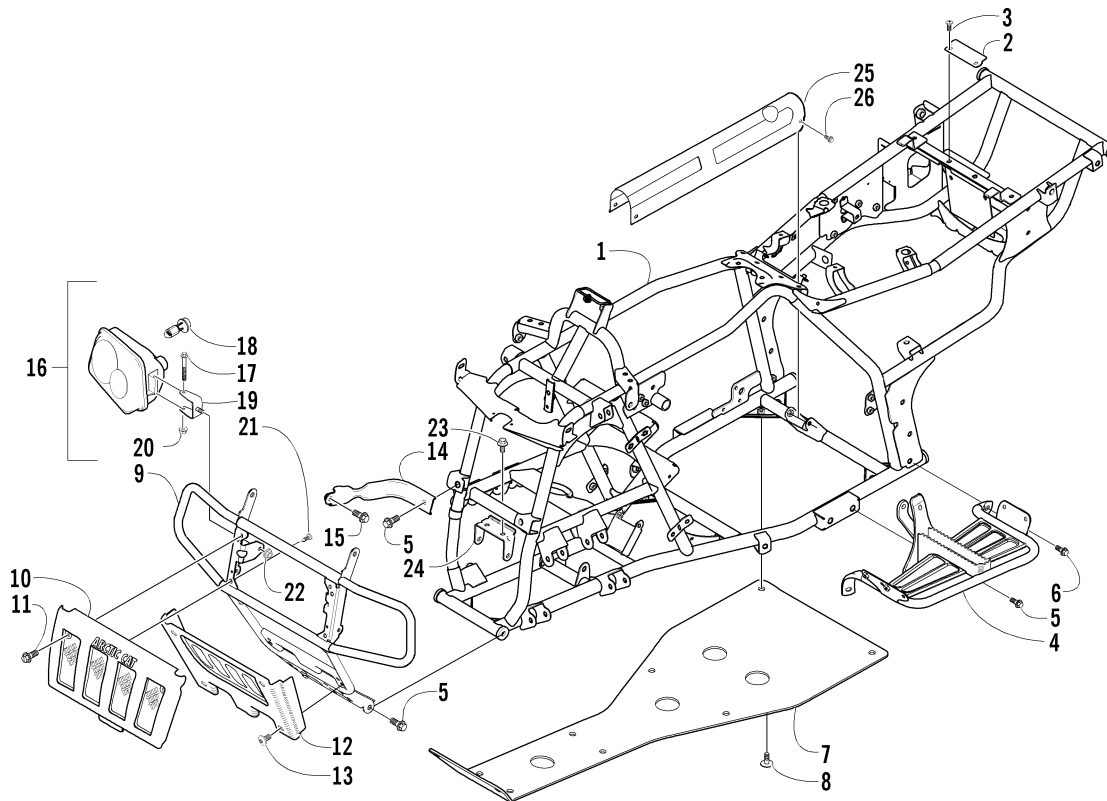
2



DECALS

0737-459

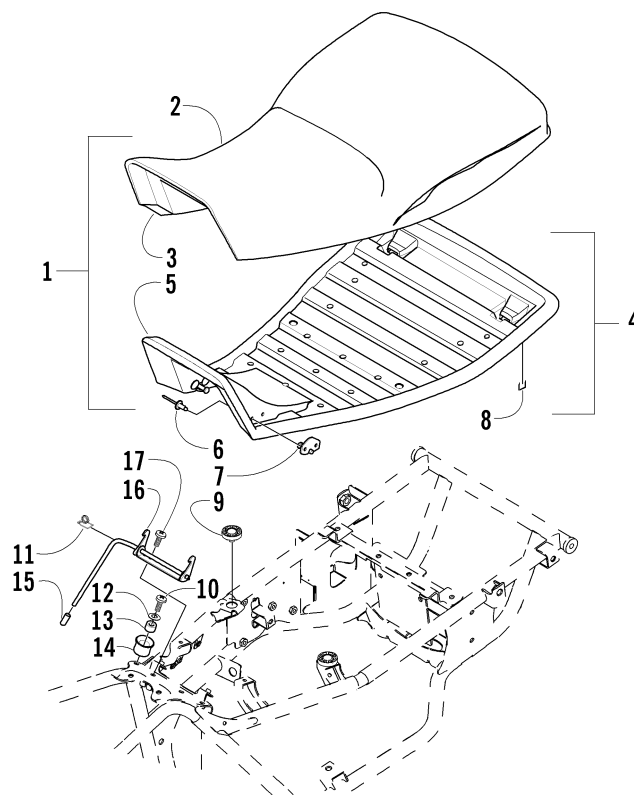
Ref.	Part No.	Qty.	Description	Ref.	Part No.	Qty.	Description
1	<u>0411-511</u>	1	Decal, Side - Right	5	<u>0411-587</u>	1	Decal, Hi/Low Range
	<u>0411-512</u>	1	Decal, Side - Left		<u>0411-586</u>	1	Decal, Hi/Low Range (4X4)
	<u>0411-509</u>	1	Decal, Side - Right (2X4 Green)	6	<u>0411-502</u>	1	Decal, CA Emissions
	<u>0411-510</u>	1	Decal, Side - Left (2X4 Green)	7	0411-006	1	Decal, Warning - Front Rack Load
	<u>0411-515</u>	1	Decal, Side - Right (4X4 Red)	8	0411-007	1	Decal, Warning - Rear Rack Load
	<u>0411-516</u>	1	Decal, Side - Left (4X4 Red)	9	0411-435	1	Decal, Passenger
	<u>0411-513</u>	1	Decal, Side - Right (4X4 Green)	10	0411-401	1	Decal, Warning - Age
	<u>0411-514</u>	1	Decal, Side - Left (4X4 Green)	11	0411-008	1	Decal, Warning - Reverse/Pre-Ride
2	<u>0411-526</u>	1	Decal, Front	12	0411-218	1	Decal, Warning - General
	<u>0411-525</u>	1	Decal, Front (Green)	13	0411-045	1	Decal, Warning - Turn
3	0411-325	1	Decal, Instruction - Choke	14	0411-430	1	Decal, Warning - Tire Pressure
4	0411-086	1	Decal, Shift Pattern	15	0411-269	1	Decal, Warning - Towing



FRAME AND RELATED PARTS

0737-461

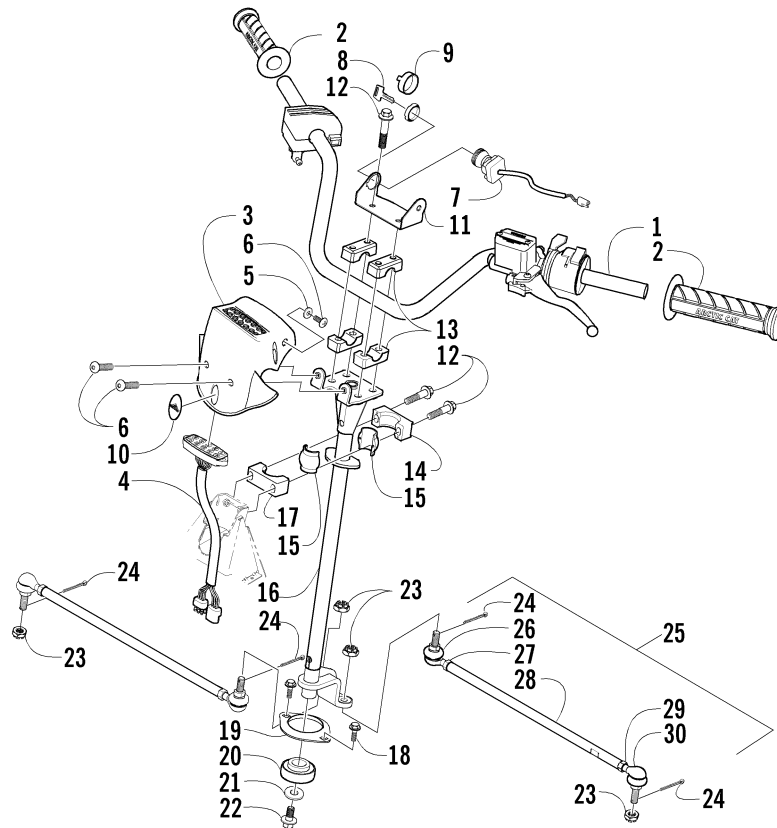
Ref.	Part No.	Qty.	Description	Ref.	Part No.	Qty.	Description
1	<u>0506-957</u>	1	Frame, Main	14	0506-655	2	Channel, Bumper
	<u>0506-875</u>	1	Frame, Main (4X4)	15	8408-812	2	Screw, Cap
2	<u>0506-962</u>	1	Bracket, Body Hold-Down	16	0409-032	1	Headlight - Right (inc. 17-20)
3	8476-616	2	Screw, Machine		0409-031	1	Headlight - Left (inc. 17-20)
4	<u>0506-959</u>	1	Footrest - Right	17	8410-860	2	● Screw, Cap
	0506-217	1	Footrest - Left	18	0409-045	4	● Bulb, Headlight
5	8409-020	8	Screw, Cap	19	0406-945	2	● Bracket, Headlight
6	8408-816	4	Screw, Cap	20	0423-375	2	● Nut, Nylock
7	0406-894	1	Panel, Belly	21	0623-361	2	Screw, Self-Tapping
8	0423-101	10	Screw, Body	22	8424-802	2	Nut
9	<u>0506-873</u>	1	Bumper	23	8408-820	2	Screw, Cap (4X4)
10	0406-832	1	Grille - Upper	24	0506-210	1	Bracket, Mounting - Front Drive Gearcase (4X4)
11	0423-361	2	Screw, Machine	25	<u>0506-963</u>	1	Cover, Front Driveshaft (4X4)
12	0406-833	1	Grille - Lower	26	8471-610	4	Screw, Cap (4X4)
13	0423-362	4	Screw, Machine				



SEAT ASSEMBLY

0737-462 *Not a Service Part

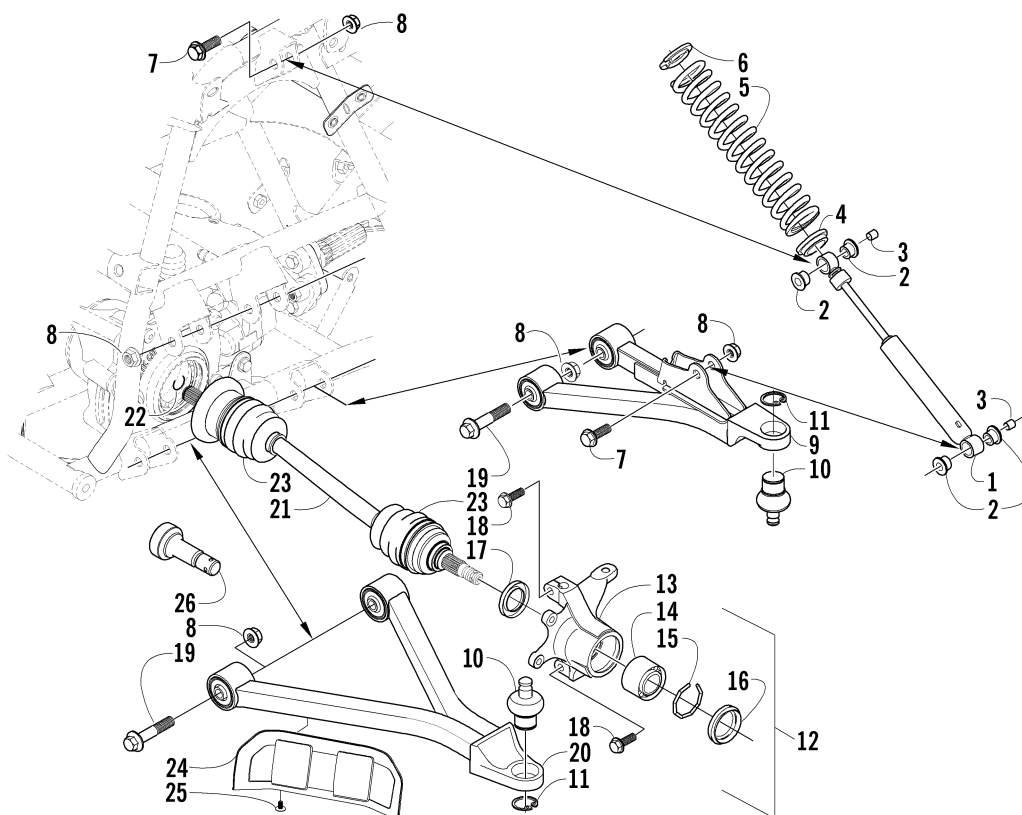
Ref.	Part No.	Qty.	Description	Ref.	Part No.	Qty.	Description
1	0506-681	1	Seat Assembly (inc. 2-8)	10	8476-620	2	Screw, Cap
2	0506-682	1	● Cover, Seat	11	0406-235	1	Spring, Seat Latch
3	0506-291	1	● Foam, Seat	12	8050-217	2	Washer
4	0506-223	1	● Base, Seat - Assembly (inc. 5-7)	13	0406-199	2	Collar, Seat-Base - Front
5	*	1	●● Base, Seat	14	0406-171	2	Bumper, Seat-Base - Front
6	8061-628	4	●● Rivet	15	0623-404	1	Cap, Protector
7	<u>1506-057</u>	2	●● Pin, Seat-Base - Front	16	<u>1506-056</u>	1	Latch, Seat - Assembly
8	0624-100	AR	● Staple	17	8476-616	2	Screw, Machine
9	0406-309	2	Grommet, Seat - Center				



STEERING ASSEMBLY

0737-463

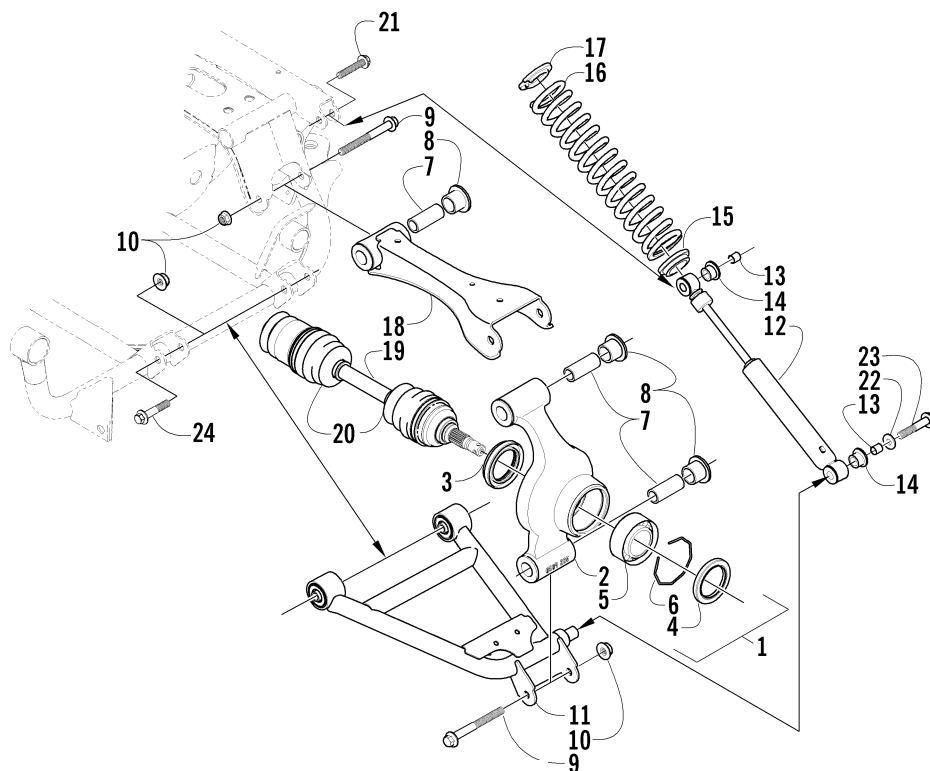
Ref.	Part No.	Qty.	Description	Ref.	Part No.	Qty.	Description
1	0505-427	1	Tube, Handlebar	15	0405-020	2	Bearing, Steering Post
2	0405-106	2	Grip, Handlebar	16	0505-409	1	Post, Steering
3	0405-063	1	Housing, Instrument	17	0605-171	1	Housing, Bearing - Lower
4	0420-035	1	Panel, LED	18	8408-816	2	Screw, Cap
5	0423-052	1	Collar, Body	19	0602-233	1	Flange, Bearing
6	8477-616	3	Screw, Machine	20	0405-052	1	Bearing, Steering
7	3430-040	1	Switch, Ignition - Assembly (inc. 8)	21	0423-073	1	Washer
8	3409-007	1	● Key, Ignition - Blank (C Series)	22	8409-020	1	Screw, Cap
	3409-011	1	● Key, Ignition - Blank (D Series)	23	0423-157	4	Nut, Top Lock
	3409-012	1	● Key, Ignition - Blank (E Series)	24	0623-175	4	Pin, Cotter
	3409-013	1	● Key, Ignition - Blank (F Series)	25	0505-072	2	Tie Rod, Assembly (inc. 26-30)
9	0409-013	1	Cover, Key	26	0405-083	2	● Ball Joint, Tie Rod - Left
10	0405-042	1	Plug, Instrument Pod	27	0423-013	2	● Nut - Left
11	0506-348	1	Bracket, Key Switch	28	0405-032	2	● Tie Rod
12	8408-860	6	Screw, Cap	29	8420-002	2	● Nut - Right
13	0405-035	4	Cap, Steering Adjuster	30	0405-082	2	● Ball Joint, Tie Rod - Right
14	0605-147	1	Housing, Bearing - Upper				



FRONT SUSPENSION ASSEMBLY

0737-469

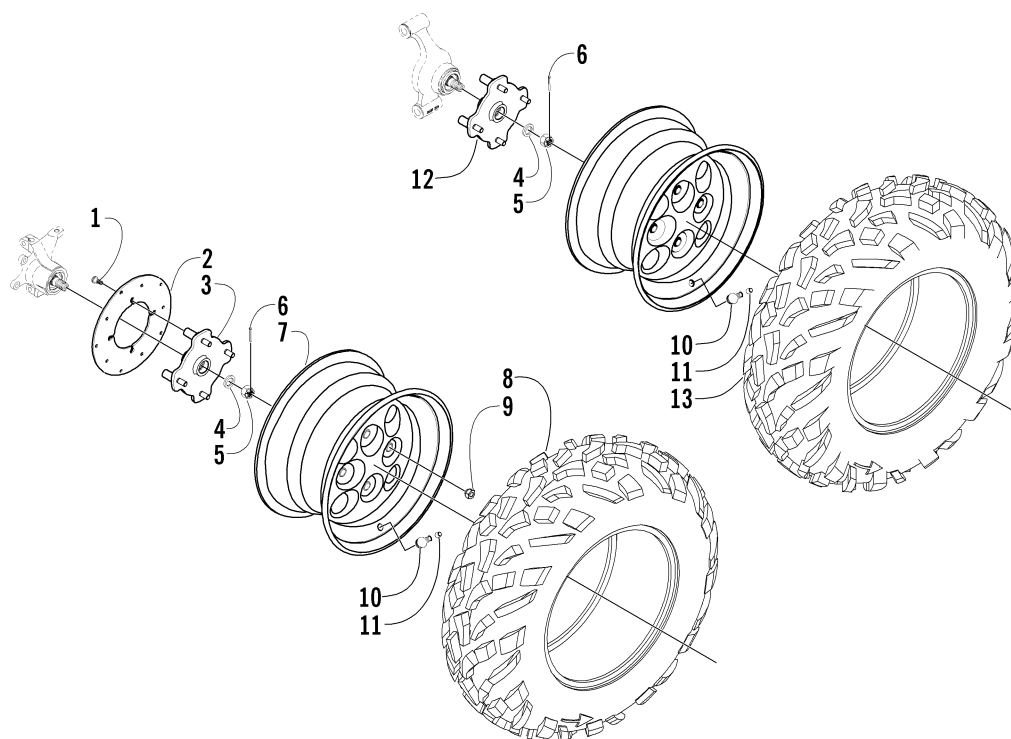
Ref.	Part No.	Qty.	Description	Ref.	Part No.	Qty.	Description
1	0403-036	2	Shock Absorber - Front (inc. 2-3)	14	0402-275	2	● Bearing, Wheel Hub - Front
2	0604-310	8	● Bushing, Shock Absorber	15	0423-034	2	● Clip, Bearing
3	0403-028	4	● Sleeve, Shock	16	0402-089	2	● Seal, Wheel Bearing - Front
4	<u>0403-104</u>	2	Retainer, Spring - Lower	17	0402-069	2	● Seal, Wheel Bearing - Rear
5	0403-037	2	Spring, Shock Absorber	18	8409-030	4	Screw, Cap
6	1603-889	2	Retainer, Spring	19	8409-060	8	Screw, Cap
7	8409-040	4	Screw, Cap	20	0503-037	1	A-Arm, Lower Right (inc. 10-11)
8	8428-002	12	Nut, Lock		0503-036	1	A-Arm, Lower Left (inc. 10-11)
9	0503-026	1	A-Arm, Upper Right - Assembly (inc. 10-11)		0503-092	1	A-Arm, Lower Right (inc. 10-11) (4X4)
	0503-027	1	A-Arm, Upper Left - Assembly (inc. 10-11)		0503-093	1	A-Arm, Lower Left (inc. 10-11) (4X4)
10	0405-068	4	● Ball Joint - Front	21	<u>0402-987</u>	2	Axle, Drive - Front Right (inc. 22-23) (4X4)
11	0423-009	4	● Clip, Ball Joint	22	0441-400	2	● Clip, Retaining (4X4)
12	0505-026	1	Knuckle - Assembly - Right (inc. 13-17)	23	0436-276	4	● Repair Kit, Boot - Front Axle (4X4)
	0505-027	1	Knuckle - Assembly - Left (inc. 13-17)	24	0406-656	2	Guard, Boot - Front Axle (4X4)
13	0505-062	1	● Knuckle, Steering - Right	25	0423-101	4	Screw, Body (4X4)
	0505-063	1	● Knuckle, Steering - Left	26	<u>1402-006</u>	2	Axle, Stub (2X4)



REAR SUSPENSION ASSEMBLY

0737-498

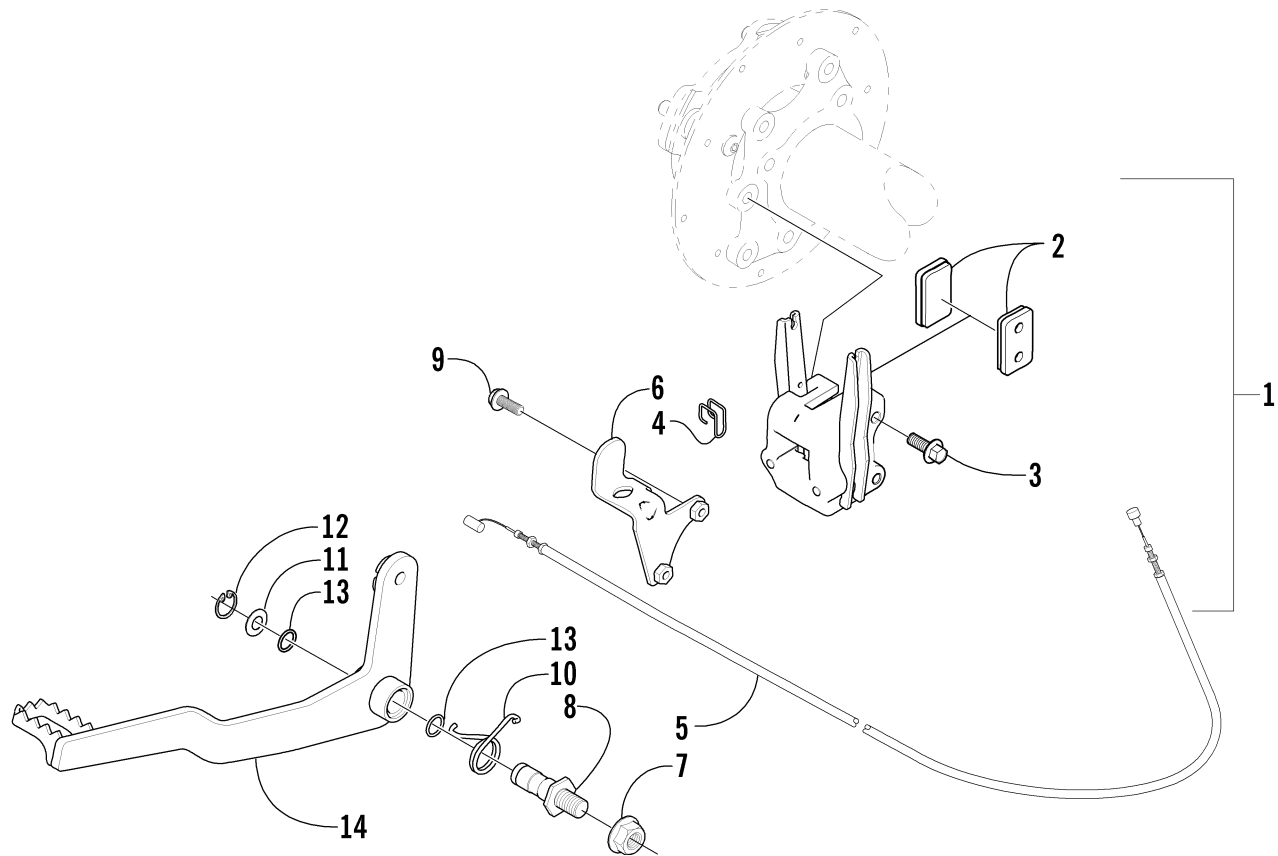
Ref.	Part No.	Qty.	Description	Ref.	Part No.	Qty.	Description
1	0504-226	1	Knuckle, Right Rear - Assembly (inc. 2-6)	12	0404-014	2	Shock Absorber - Rear (inc. 13-14)
	0504-227	1	Knuckle, Left Rear - Assembly (inc. 2-6)	13	0403-028	4	● Sleeve, Shock Absorber
2	0504-224	1	● Knuckle - Right	14	0604-310	8	● Bushing, Shock Absorber
	0504-225	1	● Knuckle - Left	15	<u>0403-104</u>	2	Retainer, Spring - Lower
3	0402-069	2	● Seal, Wheel Bearing - Rear	16	0403-002	2	Spring, Suspension
4	0402-089	2	● Seal, Wheel Bearing - Front	17	1603-889	2	Retainer, Spring
5	0402-275	2	● Bearing, Wheel	18	0504-044	2	Arm, Rear - Upper
6	0423-034	2	● Clip, Bearing	19	<u>1402-002</u>	2	Axle, Drive (inc. 20)
7	0403-038	6	Collar, Suspension Bushing	20	0436-276	4	● Repair Kit, Boot - Rear Axle
8	0403-032	12	Bushing, Suspension	21	8409-040	2	Screw, Cap
9	8409-000	6	Screw, Cap	22	0423-087	2	Washer
10	8428-002	12	Nut, Lock	23	8408-820	2	Screw, Cap
11	0504-030	1	A-Arm, Rear - Lower Right	24	8409-060	4	Screw, Cap
	0504-031	1	A-Arm, Rear - Lower Left				



WHEEL AND TIRE ASSEMBLY

0737-503

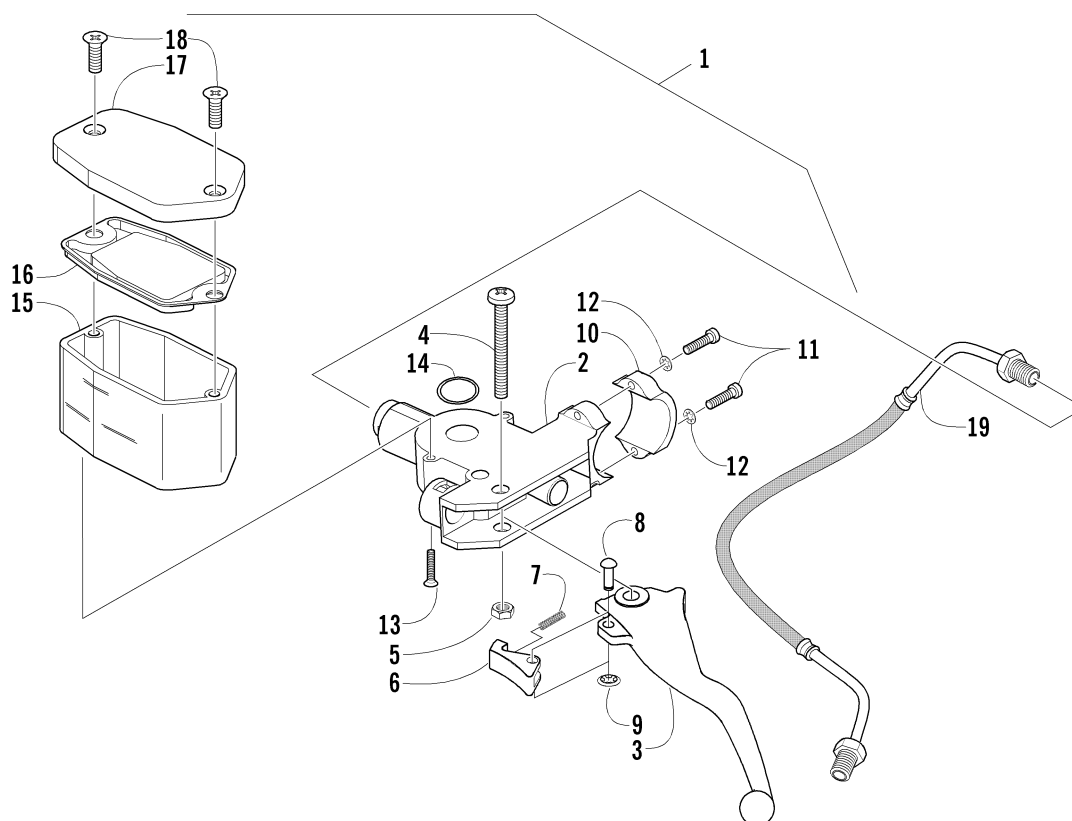
Ref.	Part No.	Qty.	Description	Ref.	Part No.	Qty.	Description
1	0423-029	12	Screw, Machine	8	0402-316	2	Tire - Front
2	0402-874	3	Disc, Brake	9	0423-408	16	Nut, Mounting - Wheel
3	<u>0502-361</u>	2	Hub, Wheel - Front	10	0402-064	4	Stem, Valve (inc. 11)
	<u>0502-360</u>	2	Hub, Wheel - Front (4X4)	11	0402-140	4	● Cap, Valve Stem
4	0402-181	4	Seal, Hub	12	<u>0502-360</u>	1	Hub, Wheel - Rear - Right
5	0423-394	4	Nut, Castle		<u>0502-359</u>	1	Hub, Wheel - Rear - Left
6	0423-407	4	Pin, Cotter	13	0402-317	2	Tire, Rear
7	0402-856	4	Wheel Assembly				



AUXILIARY BRAKE ASSEMBLY

0737-504

Ref.	Part No.	Qty.	Description	Ref.	Part No.	Qty.	Description
1	0502-372	1	Auxiliary Brake Assembly (inc. 2)	8	0406-562	1	Axle, Brake Lever
2	0402-958	2	● Pad, Brake	9	8476-616	2	Screw, Cap
3	8408-825	2	Screw, Cap	10	<u>0502-409</u>	1	Spring, Brake Lever
4	0402-379	1	Wire Form, Cable	11	0423-027	1	Washer, Brake Lever
5	0487-010	1	Cable, Brake - Rear	12	0623-237	1	Ring, Snap
6	0502-056	1	Bracket, Brake Switch	13	0670-183	2	O-Ring
7	0423-165	1	Nut	14	0502-095	1	Lever, Brake

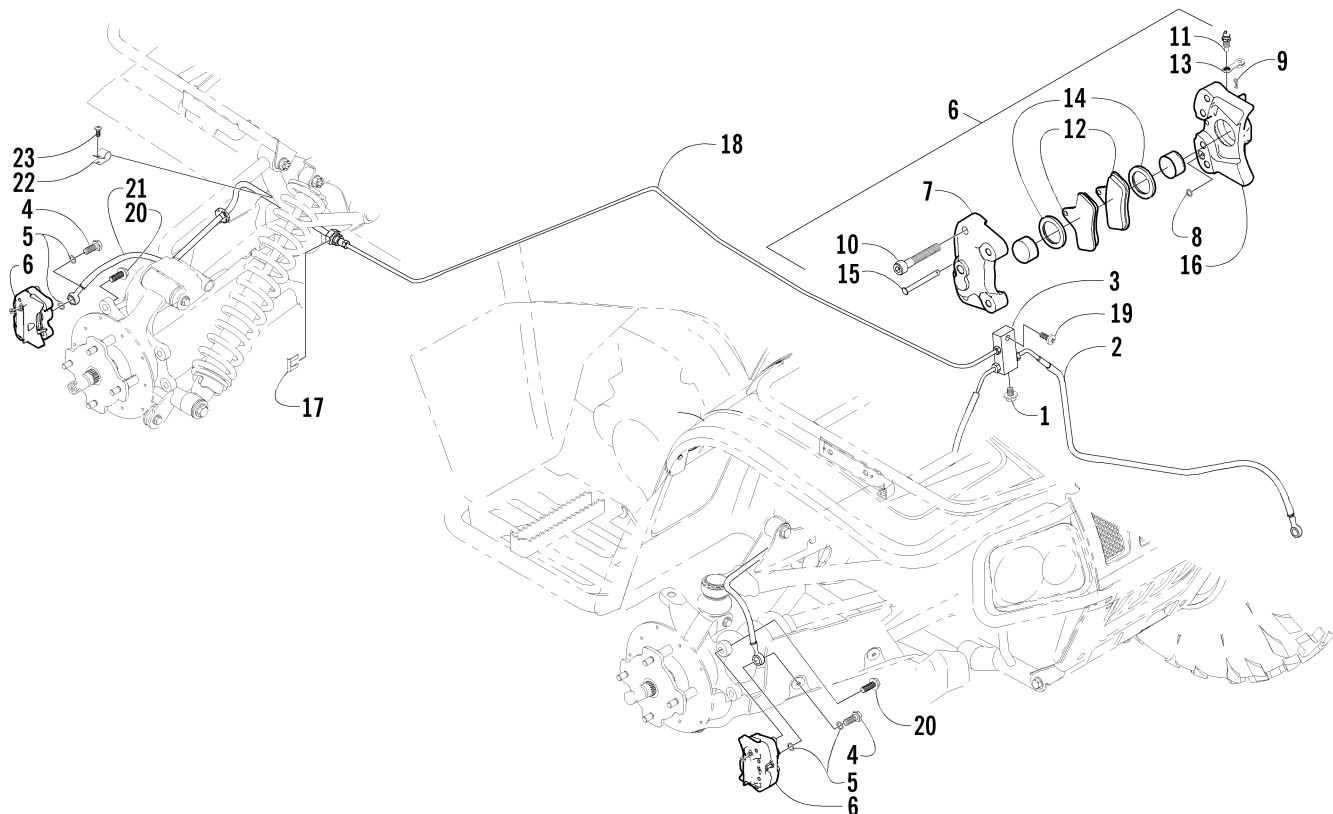


HYDRAULIC HAND BRAKE ASSEMBLY

(Master Cylinder Rebuild Kit p/n 0502-429)

0737-682 *Not a Service Part

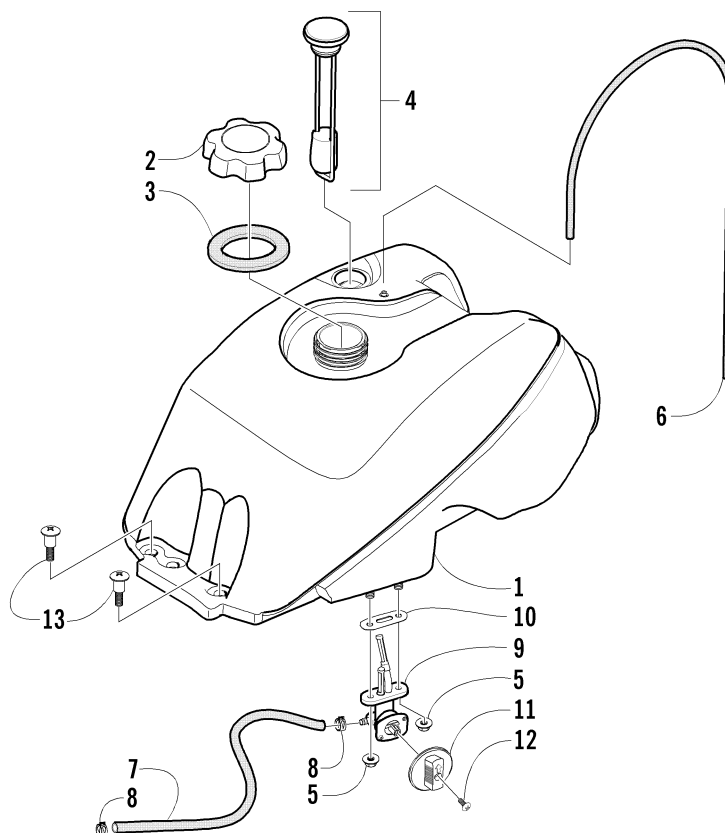
Ref.	Part No.	Qty.	Description	Ref.	Part No.	Qty.	Description
1	<u>0502-387</u>	1	Brake Assembly (inc. 2-18)	11	0623-613	2	● Screw, Machine
2	*	1	● Master Cylinder	12	8052-212	2	● Washer, Lock - Internal Tooth
3	0402-818	1	● Lever, Brake	13	0623-432	2	● Screw, Master Cylinder Mounting
4	0623-430	1	● Screw, Lever Mounting	14	0602-587	1	● O-Ring
5	0623-056	1	● Nut, Lock	15	0602-740	1	● Reservoir
6	<u>1402-034</u>	1	● Lock, Brake Lever	16	0602-741	1	● Gasket, Cover
7	0402-245	1	● Spring, Brake Lever Lock	17	0602-742	1	● Cover, Reservoir
8	0402-246	1	● Pin, Brake Lever Lock	18	0623-506	2	● Screw, Cover
9	0423-090	1	● Nut, Press-On - Brake Lever Lock	19	0402-962	1	Brakeline, Hydraulic
10	0602-907	1	● Clamp, Master Cylinder				



HYDRAULIC BRAKE ASSEMBLY

0737-515 *Not a Service Part

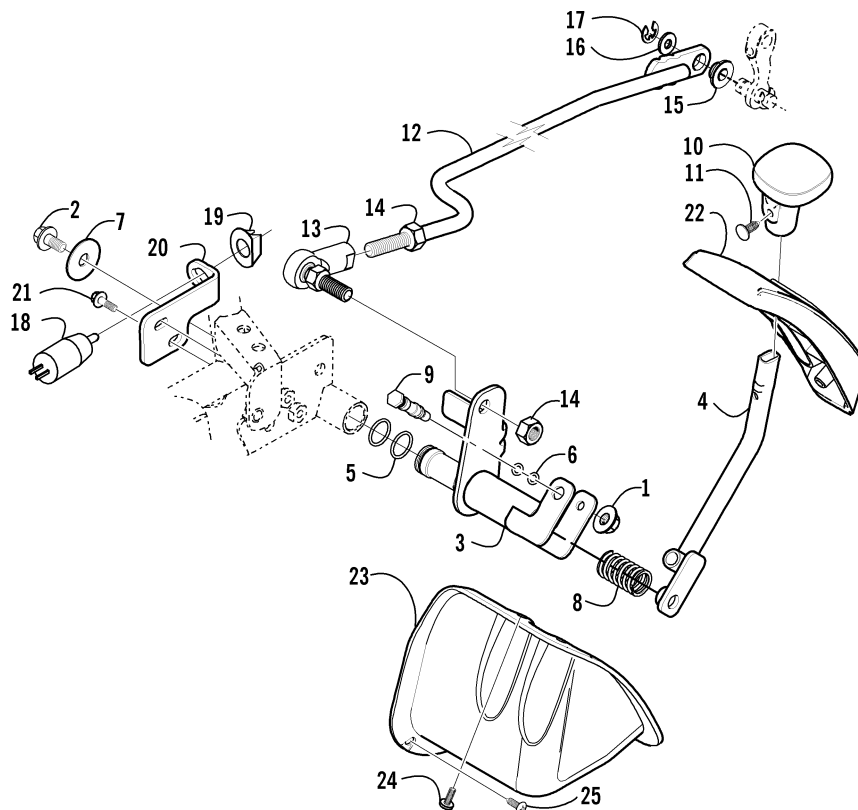
Ref.	Part No.	Qty.	Description	Ref.	Part No.	Qty.	Description
1	<u>1402-031</u>	1	Plug, Junction Block	12	0402-882	6	● Pad, Brake
2	<u>0402-986</u>	2	Hose, Brake - Front	13	0402-491	3	● Valve, Bleed
3	<u>1402-005</u>	1	Block, Junction	14	0402-980	6	● O-Ring, Brake Caliper
4	0423-413	3	Bolt, Banjo Fitting	15	0402-495	3	● Pin, Brake Caliper
5	0423-178	6	Washer, Crush	16	*	1	● Housing, Caliper
6	0502-335	1	Caliper, Brake - Right Front (inc. 7-16)	17	0402-597	1	Clip, Brakeline
	0502-336	2	Caliper, Brake - Left Front and Right Rear (inc. 7-16)	18	<u>1402-018</u>	1	Tube, Brakeline - Rear
7	*	3	● Housing, Caliper	19	8476-625	1	Screw, Machine
8	0402-490	3	● O-Ring	20	8408-825	6	Screw, Cap
9	0402-496	3	● Pin, Cotter	21	<u>1402-020</u>	1	Hose, Brake - Rear
10	0402-492	12	● Screw, Socket Head	22	0423-415	1	Clamp, Cable
11	0402-493	3	● Cap, Bleed Valve	23	0423-324	1	Screw, Machine



GAS TANK ASSEMBLY

0736-991

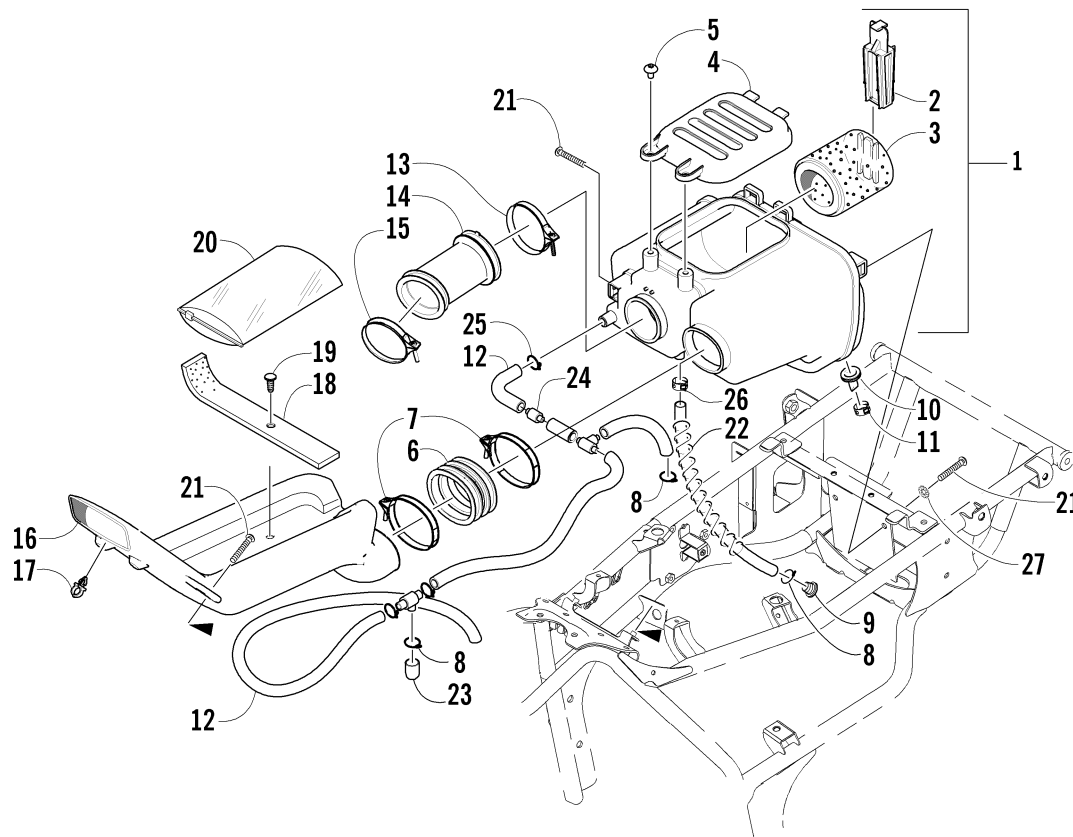
Ref.	Part No.	Qty.	Description	Ref.	Part No.	Qty.	Description
1	0570-068	1	Tank, Gas - Assembly (inc. 2-10)	8	0423-152	2	● Clamp, Hose - Spring
2	0470-438	1	● Cap, Gas Tank (inc. 3)	9	0470-445	1	● Valve, Fuel Shut-Off (inc. 10)
3	0109-733	1	●● Seal, Gas Tank Cap	10	0470-364	1	●● Gasket, Fuel Shut-Off Valve
4	0470-444	1	● Gauge, Fuel w/Gasket (Press-Fit)	11	0470-408	1	Knob, Fuel Shut-Off Valve
5	0423-398	2	● Nut, Lock	12	0423-146	1	Screw, Fuel Shut-Off Valve Knob
6	0470-416	1	● Hose, Vent	13	0423-130	2	Screw, Gas Tank
7	0610-007	AR	● Hose, Gasline - 25 ft				



REVERSE SHIFT LEVER ASSEMBLY

0736-908

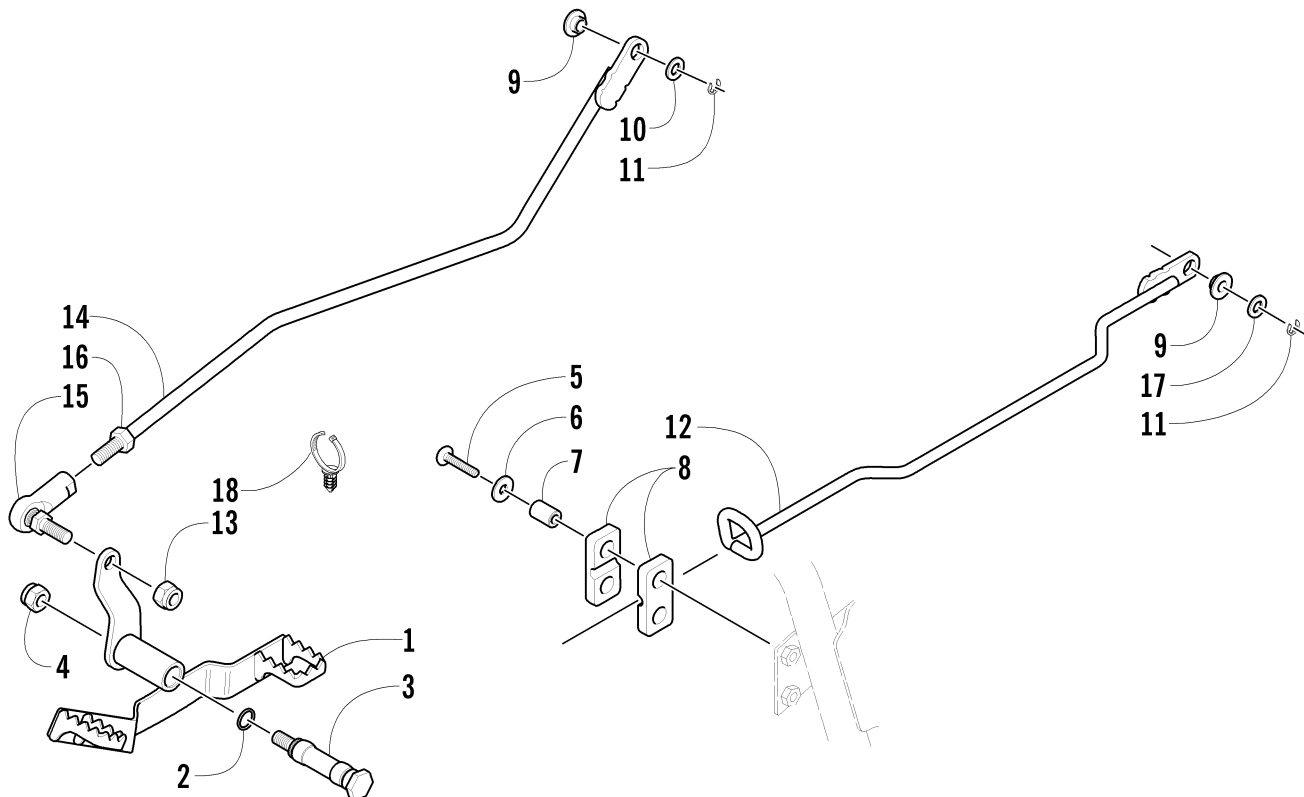
Ref.	Part No.	Qty.	Description	Ref.	Part No.	Qty.	Description
1	8424-602	1	Nut	14	0623-294	2	Nut
2	8408-812	1	Screw, Cap	15	0423-091	1	Bushing, Shift
3	0502-237	1	Axle, Reverse Shift Lever	16	8050-242	1	Washer
4	0502-185	1	Lever, Reverse Shift	17	3423-168	1	E-Ring
5	0423-299	2	O-Ring	18	0409-008	1	Reverse Switch
6	0423-182	2	O-Ring	19	0402-168	1	Retainer, Reverse Switch
7	0423-087	1	Washer	20	<u>0506-961</u>	1	Bracket, Reverse Switch
8	<u>0502-410</u>	1	Spring, Reverse Shift Lever	21	8408-616	2	Screw, Cap
9	0402-675	1	Axle, Pivot	22	0402-847	1	Plate, Shift
10	0402-843	1	Handle, Reverse Shift Lever	23	0406-943	1	Shield, Linkage
11	0423-345	1	Clip, Push	24	0423-371	3	Screw, Machine
12	0502-250	1	Linkage, Shift	25	0623-309	1	Screw, Self-Tapping
13	0402-844	1	End, Rod				



AIR INTAKE ASSEMBLY

0736-899

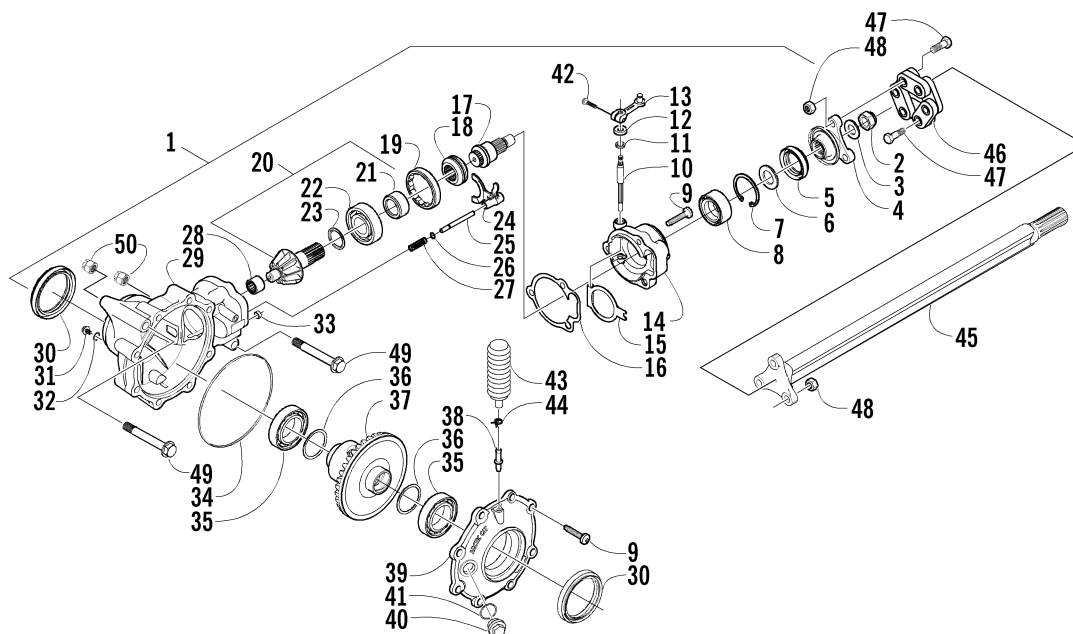
Ref.	Part No.	Qty.	Description	Ref.	Part No.	Qty.	Description
1	3570-001	1	Intake, Air - Assembly (inc. 2-7)	15	3402-235	1	Clamp
2	3402-330	1	● Slider, Retainer - Filter	16	0570-062	1	Snorkel, Air Intake - Assembly (inc. 17-19)
3	0470-421	1	● Filter, Air Cleaner	17	0623-101	1	● Clip, Routing
4	3402-331	1	● Cap	18	0406-379	1	● Strap, Tool Kit
5	8477-610	2	● Screw, Cap	19	0606-586	1	● Plug, Hole - Retaining Clip
6	3423-329	1	● Joint	20	0444-122	1	Kit, Tool
7	3423-311	2	● Clamp	21	8476-616	5	Screw, Cap
8	3423-313	5	Clip	22	0423-128	1	Spring, Vent Tube
9	0423-127	1	Plug, Drain	23	3402-334	1	Plug, Breather
10	0470-442	1	Valve, Air Cleaner	24	3470-002	1	Valve, Check
11	0423-071	1	Clamp	25	3423-424	1	Clip, Air Cleaner
12	3470-004	1	Tube, Crankcase Breather	26	0423-047	1	Clamp
13	3402-236	1	Clamp	27	8053-212	1	Washer, Lock - External Tooth
14	0470-347	1	Boot, Air Cleaner				



SHIFTER ASSEMBLY

0737-519

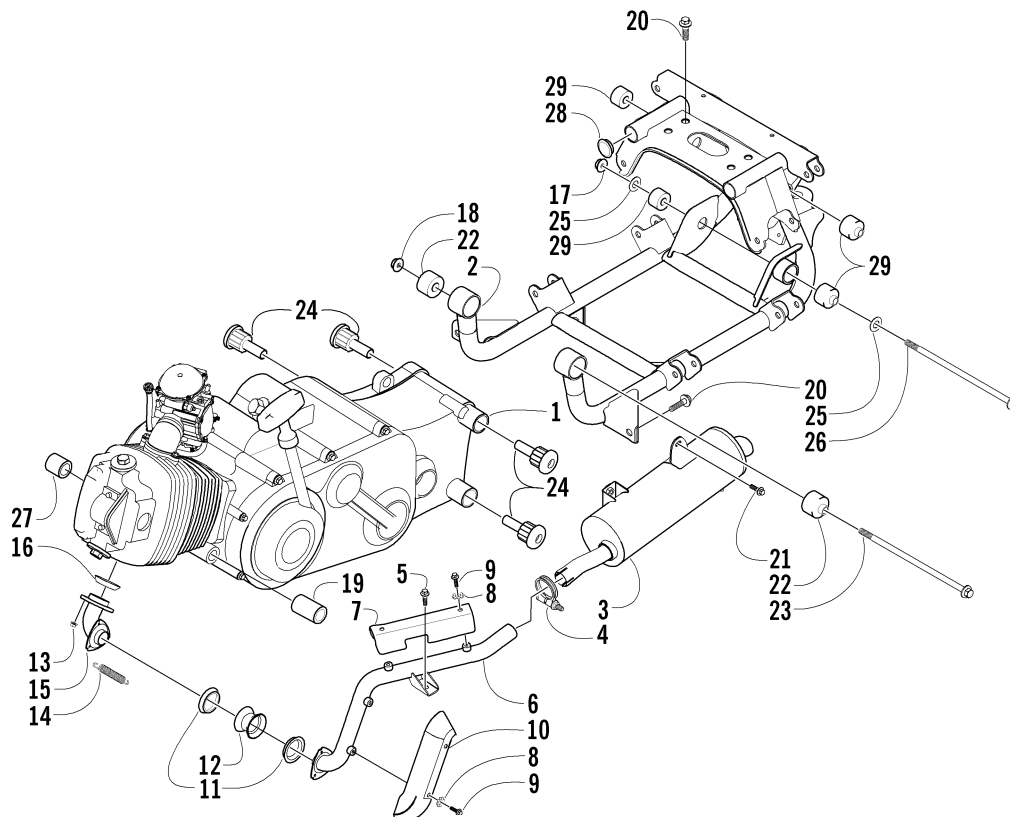
Ref.	Part No.	Qty.	Description	Ref.	Part No.	Qty.	Description
1	0502-253	1	Lever, Footshift	10	8050-242	1	Washer
2	0423-096	2	O-Ring	11	3423-168	2	E-Ring, Linkage
3	0402-370	1	Axle, Lever	12	0502-257	1	Linkage, High/Low Shift
4	8422-002	1	Nut	13	0623-025	1	Nut, Lock
5	8476-630	2	Screw, Cap	14	0502-256	1	Linkage, Footshift Lever (inc. 15-16)
6	8050-222	2	Washer	15	0402-844	1	● End, Rod
7	0402-256	2	Collar, High/Low Shift	16	0623-294	1	● Nut
8	0406-363	2	Bushing, High/Low Shift	17	8050-247	1	Washer
9	0423-091	2	Bushing, Linkage	18	0423-075	1	Cable Tie, Push-Mount



FRONT DRIVE GEARCASE ASSEMBLY (4X4)

0737-614

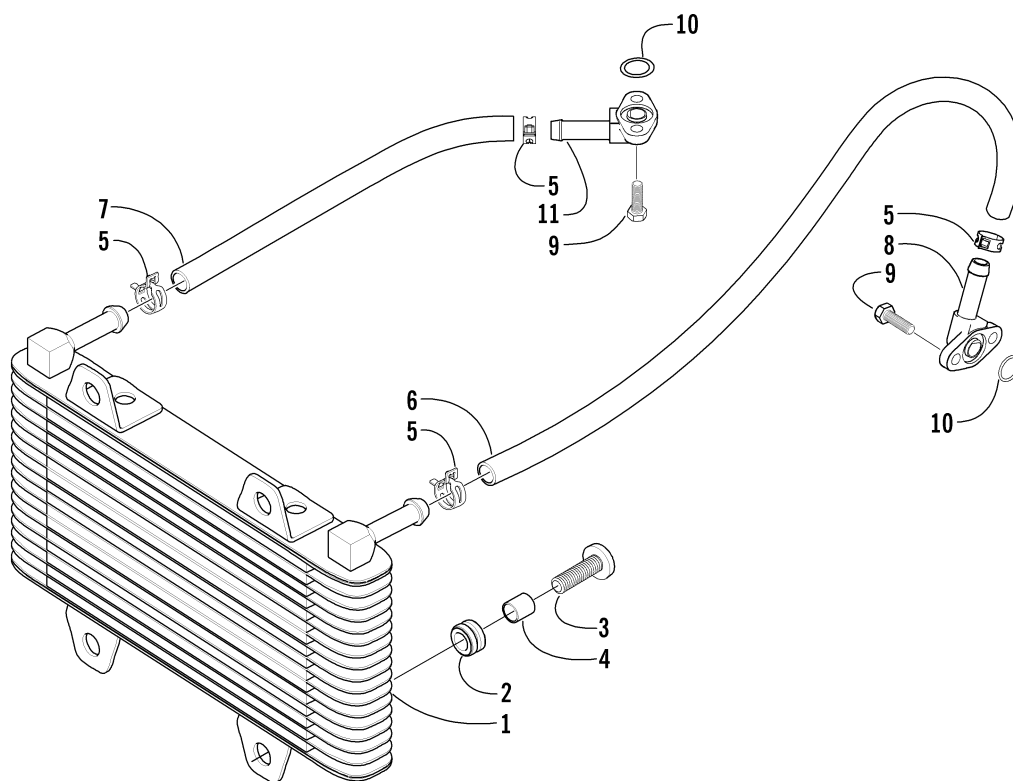
Ref.	Part No.	Qty.	Description	Ref.	Part No.	Qty.	Description
1	0502-153	1	Gearcase, Front Drive - Assembly (inc. 2-42)	25	0402-417	1	● Shaft, Shuttle
2	0423-135	1	● Nut	26	0423-147	1	● O-Ring
3	0423-134	1	● Washer	27	0402-418	1	● Spring, Return
4	0402-422	1	● Flange, Drive	28	0402-328	1	● Bearing
5	0402-395	1	● Seal	29	0502-120	1	● Housing, Gearcase
6	0402-346	1	● Spacer, Drive	30	0402-394	2	● Seal
7	0402-332	1	● Ring, Retaining	31	0402-450	1	● Plug, Magnetic (inc. 32)
8	0402-003	1	● Bearing	32	0423-153	1	● ● O-Ring
9	0423-118	11	● Screw, Self-Tapping	33	0402-411	1	● Pin, Dowel
10	0402-412	1	● Shaft, Selector	34	0423-149	1	● O-Ring
11	0402-416	1	● Seal	35	0402-393	2	● Bearing
12	0402-398	1	● Plate, Selector Shaft	36	0402-405	AR	● Shim
13	0502-092	1	● Arm, Selector		0402-406	AR	● Shim
14	0502-122	1	● Housing, Selector		0402-407	AR	● Shim
15	0402-414	1	● Plate, Spring - Selector		0402-408	AR	● Shim
16	0402-947	1	● Gasket, Flange		0402-409	AR	● Shim
17	0402-410	1	● Shaft, Thrust	37	0502-199	1	● Gear, Ring - 34T
18	0402-413	1	● Coupler, Drive	38	0402-871	1	● Fitting
19	0402-357	1	● Collar, Lock	39	0502-121	1	● Cover, Gearcase
20	0502-155	1	● Gear, Pinion - Assembly - 11T (inc. 21-23)	40	0402-333	1	● Plug, Fill (inc. 41)
21	0402-336	1	● ● Collar, Retaining	41	0423-154	1	● ● O-Ring
22	0402-327	1	● ● Bearing	42	8410-620	1	● Screw, Cap
23	0402-424	AR	● ● Shim	43	0402-147	1	Bladder, Gearcase
	0402-425	AR	● ● Shim	44	0423-315	1	Clamp, Fitting
	0402-426	AR	● ● Shim	45	0502-201	1	Shaft, Propeller
	0402-427	AR	● ● Shim	46	3435-007	1	Coupler, Propeller Shaft
	0402-428	AR	● ● Shim	47	3423-182	6	Screw, Cap
24	0402-420	1	● Fork, Selector	48	3004-491	6	Nut
				49	0423-404	2	Screw, Cap
				50	8428-002	2	Nut, Lock



ENGINE AND RELATED PARTS

0737-533

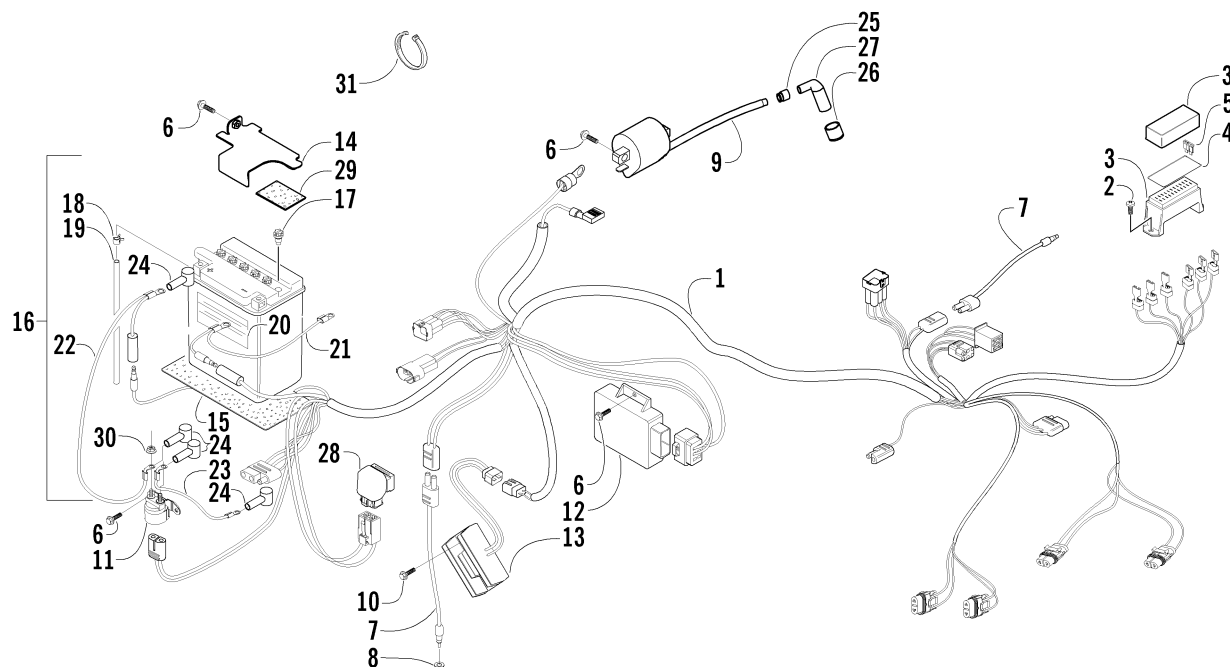
Ref.	Part No.	Qty.	Description	Ref.	Part No.	Qty.	Description
1	0462-012	1	Engine	15	0512-008	1	Pipe, Header
	0462-016	1	Engine (4X4)	16	3402-300	1	Seal, Exhaust Pipe
2	0506-189	1	Sub-Frame	17	8432-002	2	Nut
3	0512-011	1	Muffler	18	8422-202	1	Nut
4	0423-092	1	Clamp, Exhaust	19	0402-231	1	Spacer, Engine Mount - Long
5	8408-812	3	Screw, Cap	20	8409-020	6	Screw, Cap
6	0512-014	1	Pipe, Exhaust	21	8408-816	1	Screw, Cap
7	0412-024	1	Cover, Exhaust - Rear	22	3402-264	2	Mount, Engine
8	8053-211	4	Washer, Lock - External Tooth	23	3423-236	1	Screw, Cap
9	8477-610	4	Screw, Cap	24	3402-263	4	Mount, Engine
10	0412-023	1	Cover, Exhaust	25	8050-272	4	Washer
11	0612-887	2	Gasket, Exhaust	26	3423-221	2	Screw, Cap
12	<u>0512-077</u>	1	Coupler, Exhaust	27	0402-232	1	Spacer, Engine Mount - Short
13	8424-802	2	Nut	28	0406-320	2	Cap, Sub-Frame
14	0123-321	3	Spring, Extension	29	3402-232	4	Mount, Engine



OIL COOLER ASSEMBLY

0737-536

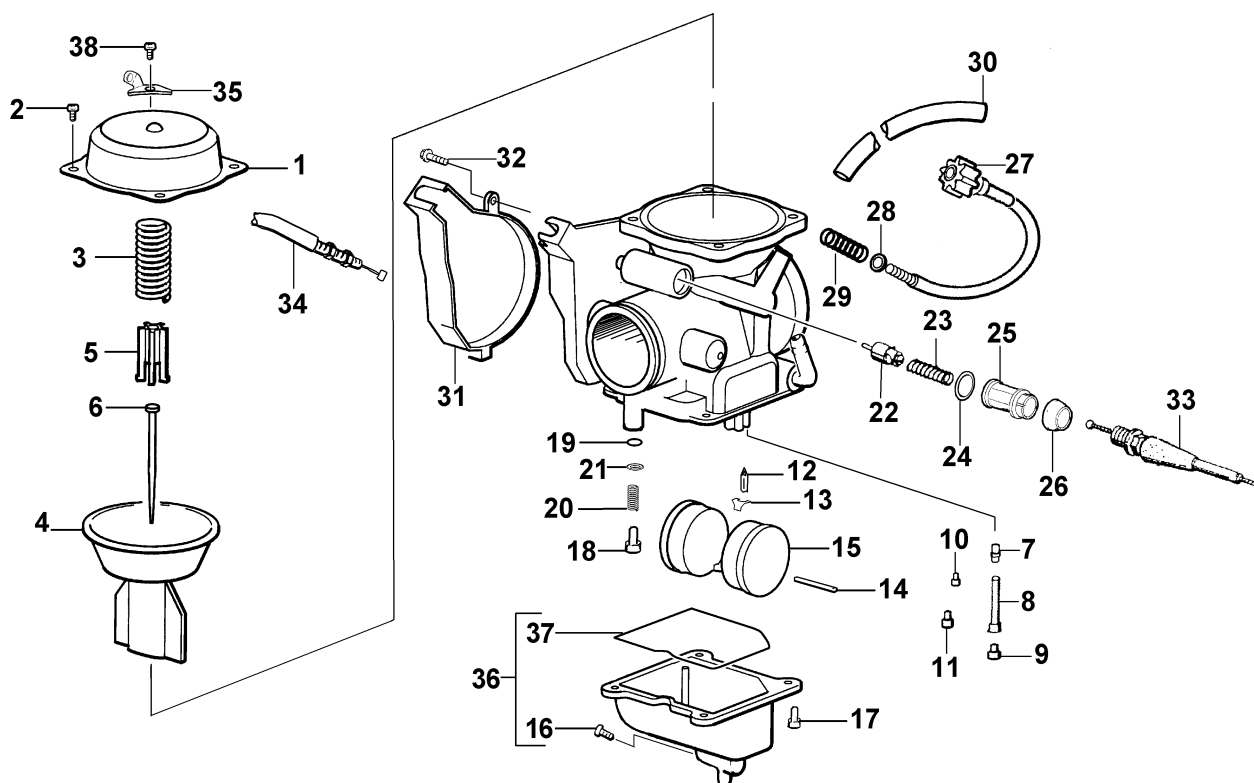
Ref.	Part No.	Qty.	Description	Ref.	Part No.	Qty.	Description
1	0413-011	1	Cooler, Oil	7	0410-006	1	Hose, Oil - Output
2	0423-086	4	Grommet	8	0410-013	1	Fitting, Oil
3	8476-620	4	Screw, Cap	9	8471-616	4	Screw, Cap
4	0423-036	4	Collar	10	0423-089	2	O-Ring, Oil Fitting
5	0423-098	4	Clamp, Hose	11	0410-012	1	Fitting, Oil - Angled
6	0410-007	1	Hose, Oil - Input				



ELECTRICAL COMPONENTS

0737-537

Ref.	Part No.	Qty.	Description	Ref.	Part No.	Qty.	Description
1	0486-088	1	Harness, Main	16	0745-040	1	Battery (inc. 17-20)
2	0623-361	2	Screw, Self-Tapping	17	0645-045	6	● Cap, Battery
3	0530-003	1	Fuse Box Assembly	18	0645-152	1	● Clamp, Hose
4	0411-404	1	Decal, Fuse Box	19	0645-263	1	● Hose, Battery Vent
5	0630-057	4	Fuse, 10 Amp	20	0645-151	1	● Decal, Warning - Battery
	0630-058	1	Fuse, 15 Amp	21	0445-010	1	Cable, Battery/Ground
6	8476-616	7	Screw, Cap	22	0445-011	1	Cable, Battery/Starter Relay
7	0409-009	2	Switch, Brake	23	0445-012	1	Cable, Starter Relay/Starter
8	<u>0402-991</u>	1	Retainer, Brake Switch	24	0645-019	4	Boot, Terminal - Battery
9	3530-025	1	Coil, Ignition	25	3430-009	1	Seal, High Tension Wire
10	8476-620	2	Screw, Cap	26	3430-026	1	Seal, Spark Plug
11	3530-013	1	Relay, Starter	27	3430-007	1	Cap, Spark Plug
12	3530-024	1	CDI Unit	28	3530-026	1	Relay, Neutral Start
13	3530-014	1	Regulator, Voltage	29	0417-003	1	Foam, Battery Bracket
14	0506-254	1	Bracket, Battery	30	0624-250	2	Nut, Starter Relay
15	0406-380	1	Pad, Battery	31	0123-788	AR	Cable Tie - 7 in.

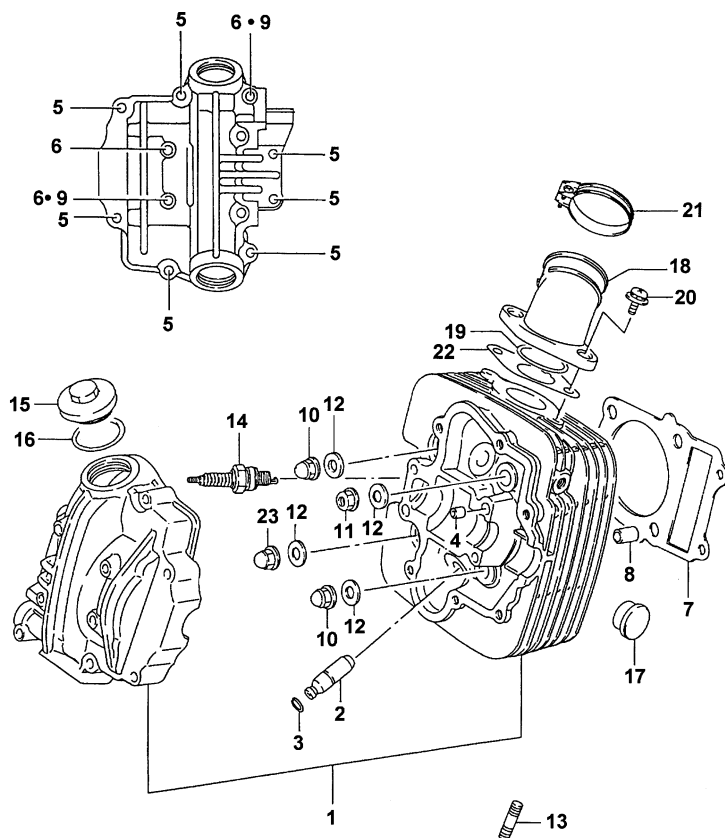


CARBURETOR

(Complete Assembly p/n 0470-387)

0735-876 *Not a Service Part **Optional

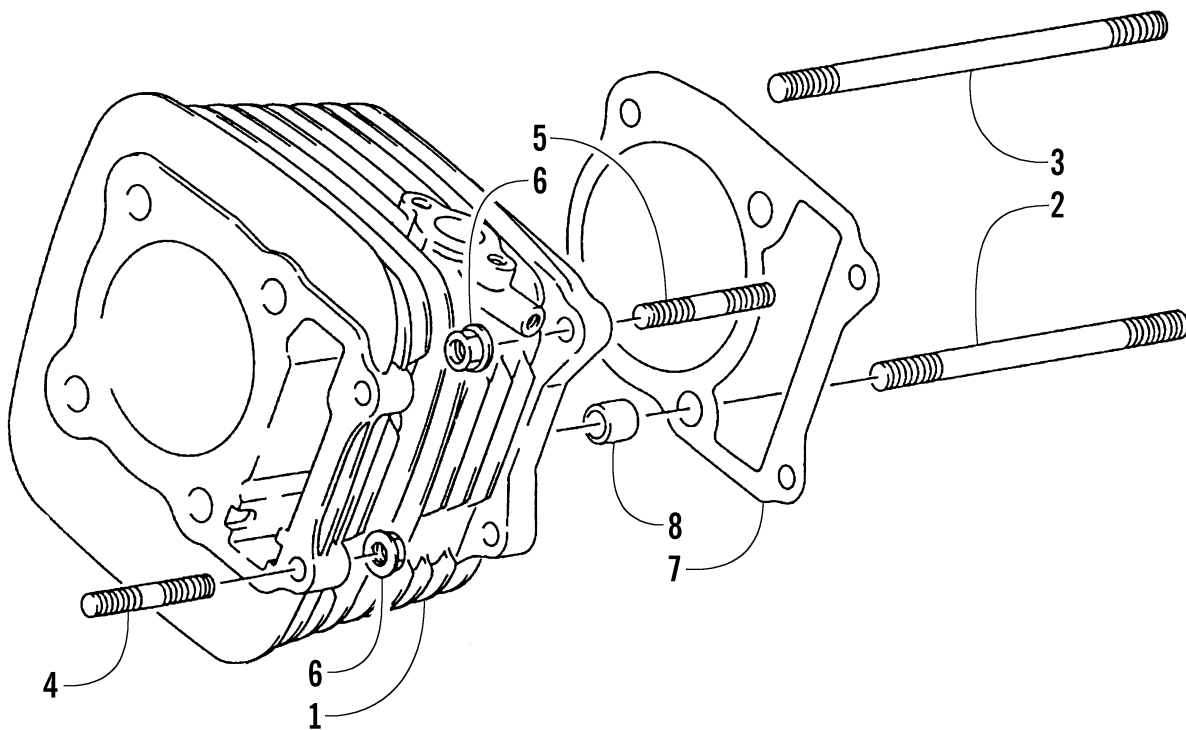
Ref.	Part No.	Qty.	Description	Ref.	Part No.	Qty.	Description
1	5507-001	1	Cover, Top	18	5507-040	1	Screw, Pilot Air - Set (inc. 19-21)
2	5507-002	3	Screw, Top Cover	19	*	1	● O-Ring
3	5507-052	1	Spring	20	*	1	● Spring
4	5507-053	1	Piston, Vacuum	21	*	1	● Washer
5	5507-054	1	Spring, Seat	22	5507-022	1	Valve, Starter
6	5507-055	1	Jet Needle	23	5507-023	1	Spring
7	5507-056	1	Needle Jet	24	5507-024	1	O-Ring
8	5507-047	1	Holder, Needle Jet	25	5507-025	1	Cap
9	5507-088	1	Main Jet - 138	26	5507-026	1	Cap, Rubber
	5507-057	1	Main Jet - 135**	27	5507-059	1	Screw, Idle Adjust (inc. 35)
	5507-041	1	Main Jet - 147**	28	5507-028	1	Washer
	5507-042	1	Main Jet - 145**	29	5507-029	1	Spring
	5507-043	1	Main Jet - 142**	30	5507-083	1	Tube, Vinyl
	5507-044	1	Main Jet - 140**	31	5507-036	1	Cover
	5507-009	1	Main Jet - 150**	32	5507-037	1	Screw
10	5507-010	1	Slow Jet	33	0487-017	1	Cable, Choke
11	5507-090	1	Starter Jet - 60	34	0487-019	1	Cable, Throttle
12	5507-038	1	Valve, Float - Set (inc. 13)	35	*	1	Bracket, Idle Adjust Screw
13	*	1	● Clip	36	5507-064	1	Chamber, Float - Assembly (inc. 16 and 37)
14	*	1	Pin, Float	37	5507-068	1	● O-Ring, Float Chamber
15	5507-039	1	Float Set (inc. 14)	38	5507-035	1	Screw
16	5507-050	1	Plug, Drain				
17	5507-089	4	Screw				



CYLINDER HEAD ASSEMBLY

0736-195

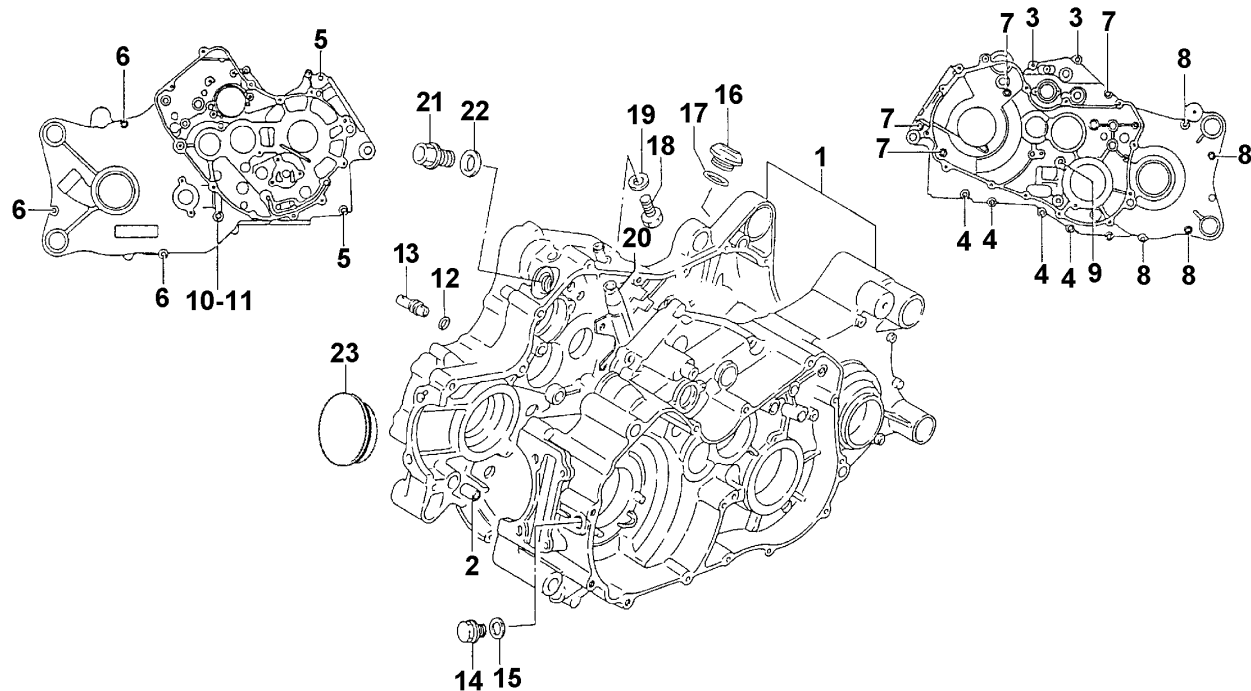
Ref.	Part No.	Qty.	Description	Ref.	Part No.	Qty.	Description
1	3402-407	1	Head, Cylinder - Assembly (inc. 2-6)	13	3004-279	2	Bolt, Stud
2	3402-247	2	● Guide, Valve	14	0217-713	1	Spark Plug (NGK DR7EA)
3	3423-068	2	● Ring, Valve Guide	15	3402-249	2	Cap, Inspection
4	3423-043	2	● Pin, Dowel	16	3423-275	2	O-Ring
5	3004-426	7	● Screw, Cap	17	3402-213	1	Plug, Head
6	3423-304	3	● Screw, Cap	18	3402-533	1	Pipe, Intake
7	3402-408	1	Gasket, Cylinder Head	19	3423-276	1	O-Ring
8	3004-822	2	Pin, Dowel	20	3423-305	2	Screw
9	3003-290	2	Gasket	21	0423-317	1	Clamp
10	3423-257	2	Nut	22	3402-298	1	Gasket, Intake Pipe
11	3004-326	1	Nut	23	3004-326	1	Nut
12	3005-243	4	Gasket				



CYLINDER ASSEMBLY

0737-814

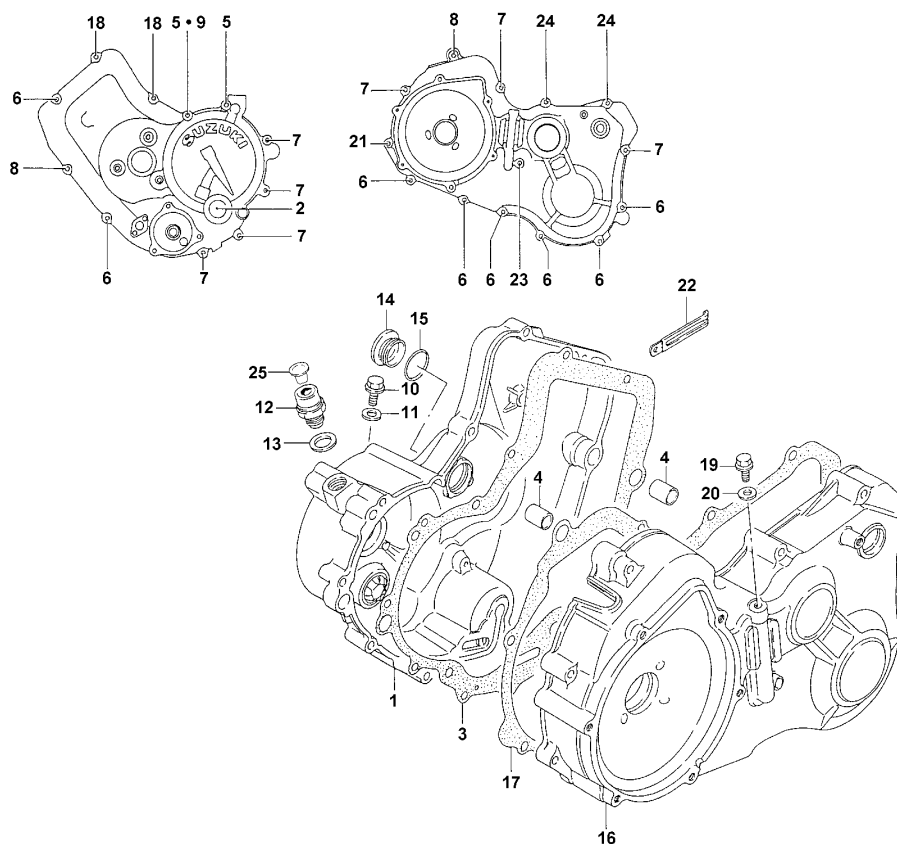
Ref.	Part No.	Qty.	Description	Ref.	Part No.	Qty.	Description
1	3402-409	1	Cylinder	5	3423-237	2	Bolt, Stud
2	3423-365	2	Bolt, Stud	6	3004-488	4	Nut
3	3423-364	2	Bolt, Stud	7	3402-410	1	Gasket, Cylinder
4	3423-089	2	Bolt, Stud	8	3423-306	2	Pin, Dowel



CRANKCASE ASSEMBLY

0737-815

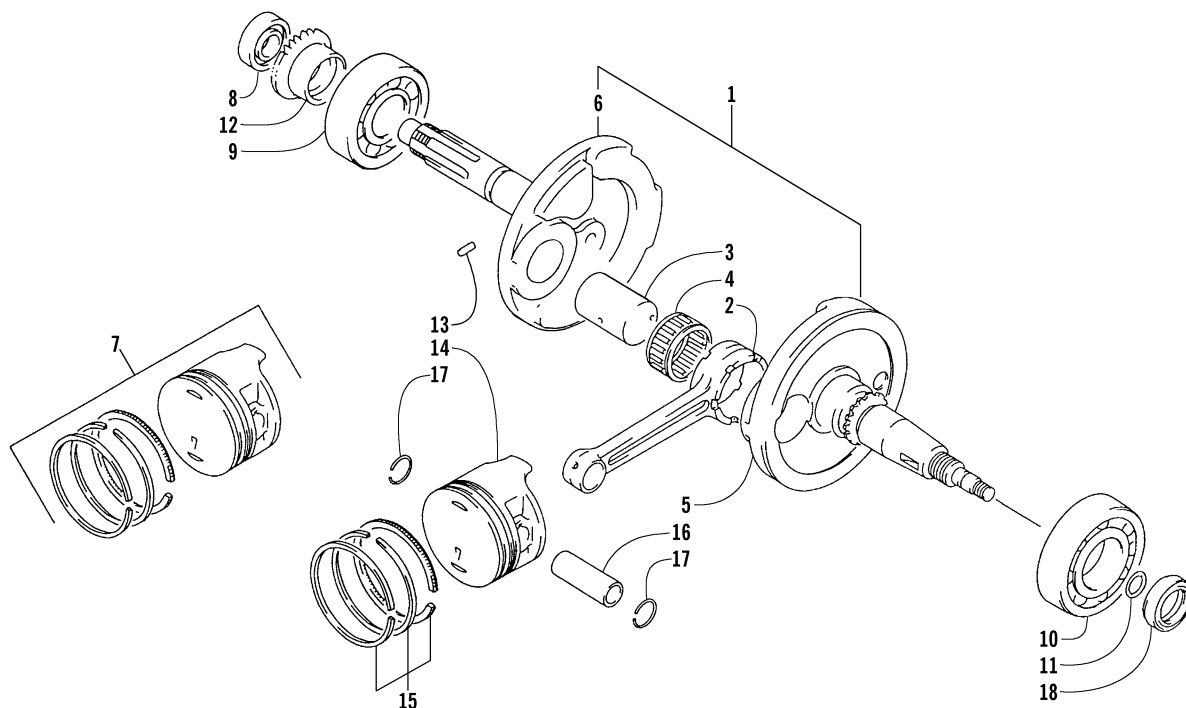
Ref.	Part No.	Qty.	Description	Ref.	Part No.	Qty.	Description
1	3402-528	1	Crankcase Set (inc. 2-13)	13	3402-245	1	● Jet, Oil Gallery
2	3423-088	2	● Pin, Dowel	14	3402-214	1	Plug
3	3423-162	2	● Screw, Cap	15	3402-012	1	Gasket
4	3423-098	4	● Screw, Cap	16	3402-212	1	Cap, Oil Filler
5	3423-091	2	● Screw, Cap	17	3423-274	1	O-Ring
6	3423-307	3	● Screw, Cap	18	3402-404	1	Plug, Oil Drain
7	3423-308	4	● Screw, Cap	19	3402-011	1	Gasket
8	3423-094	4	● Screw, Cap	20	3402-413	1	Pipe, Breather
9	3423-232	1	● Screw, Cap		3402-530	1	Pipe, Breather (4X4)
10	3423-234	1	● Screw, Cap	21	3402-258	1	Plug, Reverse Switch Hole
11	3005-243	1	● Gasket	22	3423-271	1	O-Ring
12	3423-051	1	● O-Ring, Oil Gallery Jet	23	3423-208	1	Plug, Crankcase (2X4)



CRANKCASE COVER ASSEMBLY

0737-816

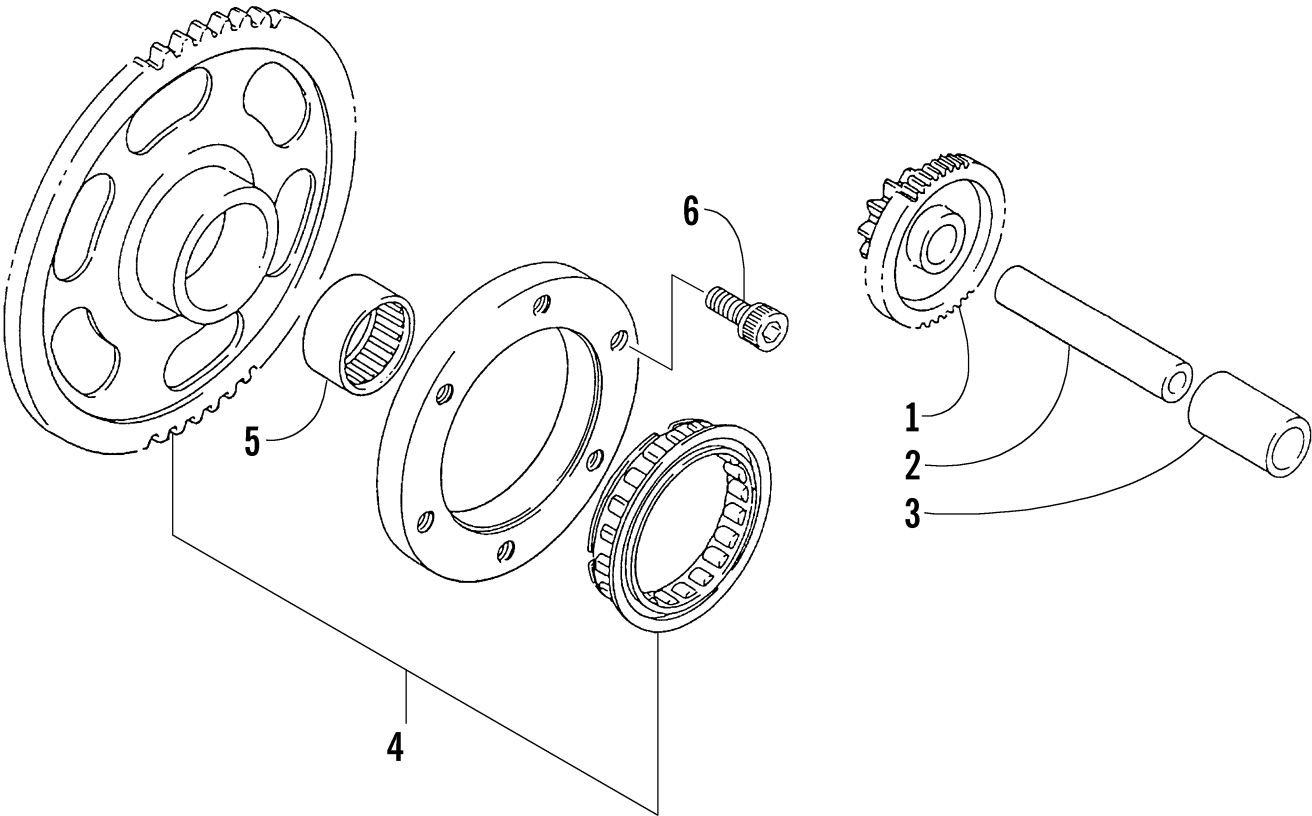
Ref.	Part No.	Qty.	Description	Ref.	Part No.	Qty.	Description
1	3402-254	1	Cover, Clutch (inc. 2)	14	3402-215	1	Cap, Clutch Adjust
2	3402-112	1	● Lens, Oil Inspection	15	3423-274	1	O-Ring
3	3402-280	1	Gasket	16	3402-256	1	Cover, Transfer
4	3423-088	4	Pin, Dowel	17	3402-262	1	Gasket, Transfer Cover
5	3423-231	2	Bolt	18	0693-327	2	Bolt
6	0693-327	8	Bolt	19	3004-339	1	Plug, Oil Gallery
7	3423-098	7	Bolt	20	3003-290	1	Gasket
8	3423-307	2	Bolt	21	3004-756	1	Screw, Cap
9	3003-290	1	Gasket	22	0693-274	2	Clamp, Breather Hose
10	3004-705	2	Plug, Oil Gallery	23	3423-308	1	Screw, Cap
11	3005-242	2	Gasket	24	3423-091	2	Screw, Cap
12	3402-041	1	Plug, Oil Gallery	25	3402-405	1	Cap, Oil Gallery Plug
13	3402-013	1	Gasket				



CRANKSHAFT ASSEMBLY

0737-817

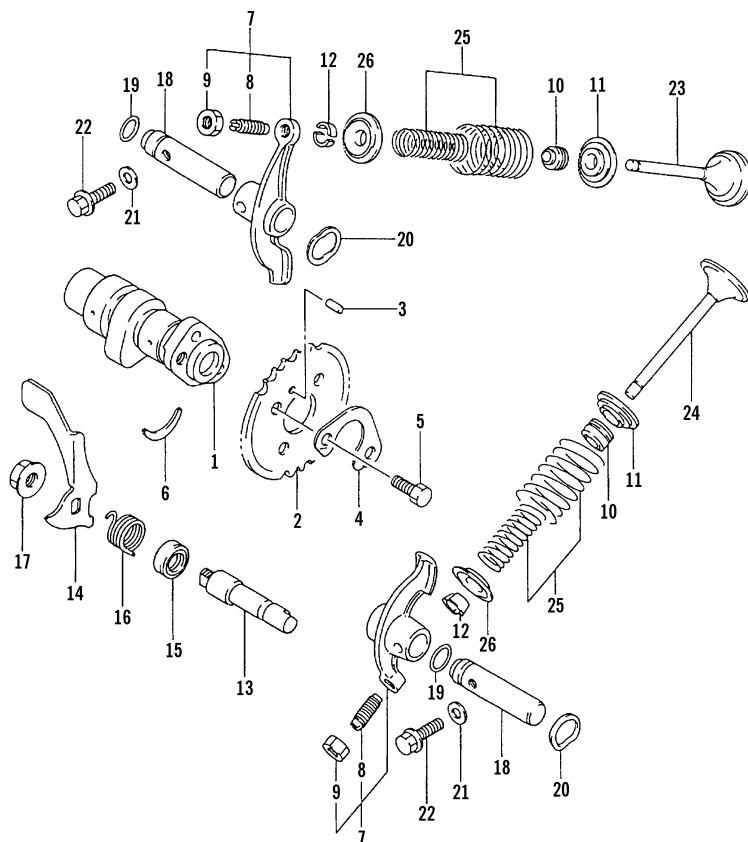
Ref.	Part No.	Qty.	Description	Ref.	Part No.	Qty.	Description
1	3402-419	1	Crankshaft Assembly (inc. 2-6)	11	3423-053	1	O-Ring
2	3402-418	1	● Rod, Connecting	12	3402-428	1	Gear, Oil Pump Drive
3	3402-529	1	● Pin, Crank	13	3423-114	1	Pin
4	3402-406	1	● Bearing	14	3402-415	1	Piston
5	3402-421	1	● Crankshaft - Left	15	3402-416	1	Ring, Piston - Set
6	3402-420	1	● Crankshaft - Right		3436-013	1	Ring, Piston - Set (Oversized 0.50 mm)
7	3402-423	1	Piston Set (Oversized 0.50 mm)		3436-014	1	Ring, Piston - Set (Oversized 1.00 mm)
	3402-424	1	Piston Set (Oversized 1.00 mm)	16	3402-417	1	Pin, Piston
8	3402-216	1	Bearing - Right	17	3423-366	2	Circlip
9	3402-221	1	Bearing - Middle	18	3402-227	1	Seal, Oil
10	3402-180	1	Bearing - Left				



STARTER CLUTCH ASSEMBLY

0733-748

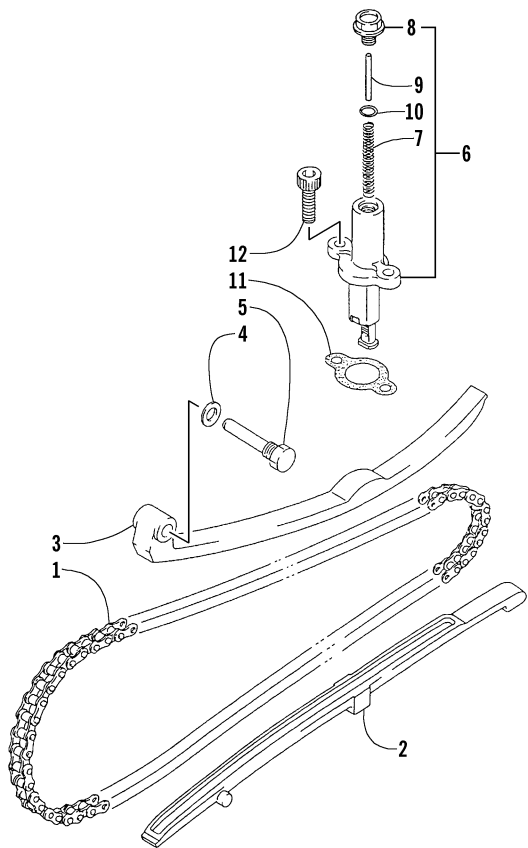
Ref.	Part No.	Qty.	Description	Ref.	Part No.	Qty.	Description
1	3402-274	1	Gear, Starter Idler	4	3402-273	1	Clutch Set, Starter (inc. 5)
2	3423-267	1	Pin	5	3402-222	1	● Bearing
3	3402-145	1	Spacer	6	3423-309	3	Screw, Cap



CAMSHAFT/VALVE ASSEMBLY

0733-749

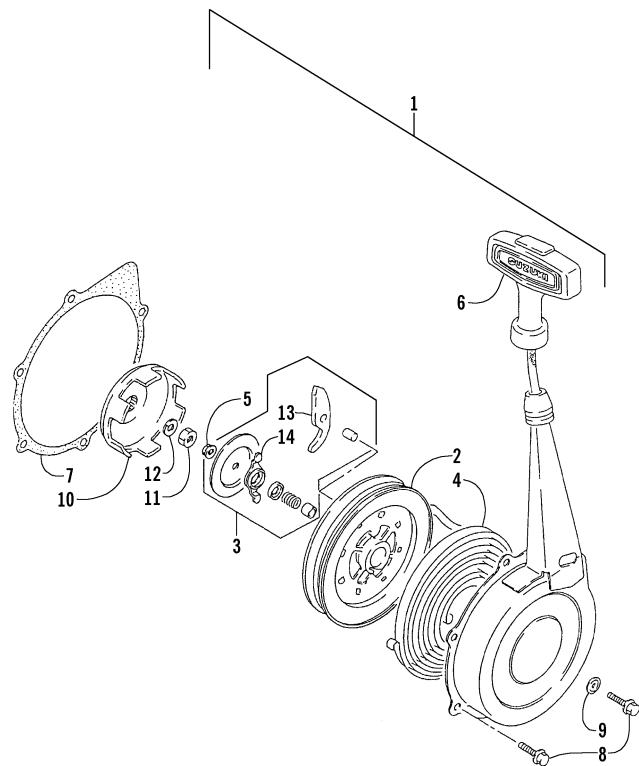
Ref.	Part No.	Qty.	Description	Ref.	Part No.	Qty.	Description
1	3402-397	1	Camshaft	14	3402-296	1	Lever, Decompression
2	3402-427	1	Sprocket	15	3402-225	1	Seal, Oil
3	3423-047	1	Pin	16	3402-242	1	Spring
4	3423-284	1	Washer	17	3004-326	1	Nut
5	3423-013	2	Screw	18	3402-289	2	Shaft, Rocker Arm
6	3423-071	1	C-Ring	19	3423-052	2	O-Ring
7	3402-288	2	Arm, Valve Rocker (inc. 8-9)	20	3423-259	2	Washer
8	3423-287	2	● Screw, Cap	21	3003-290	2	Gasket
9	3423-288	2	● Nut	22	0693-416	2	Screw, Cap
10	3402-226	2	Seal, Oil	23	3402-290	1	Valve, Intake
11	3402-403	2	Seat, Valve Spring	24	3402-291	1	Valve, Exhaust
12	0693-281	4	Cotter, Valve	25	3402-401	2	Spring, Valve - Set
13	3402-295	1	Shaft, Decompression Lever	26	3402-402	2	Retainer, Spring



CAM CHAIN ASSEMBLY

0733-750

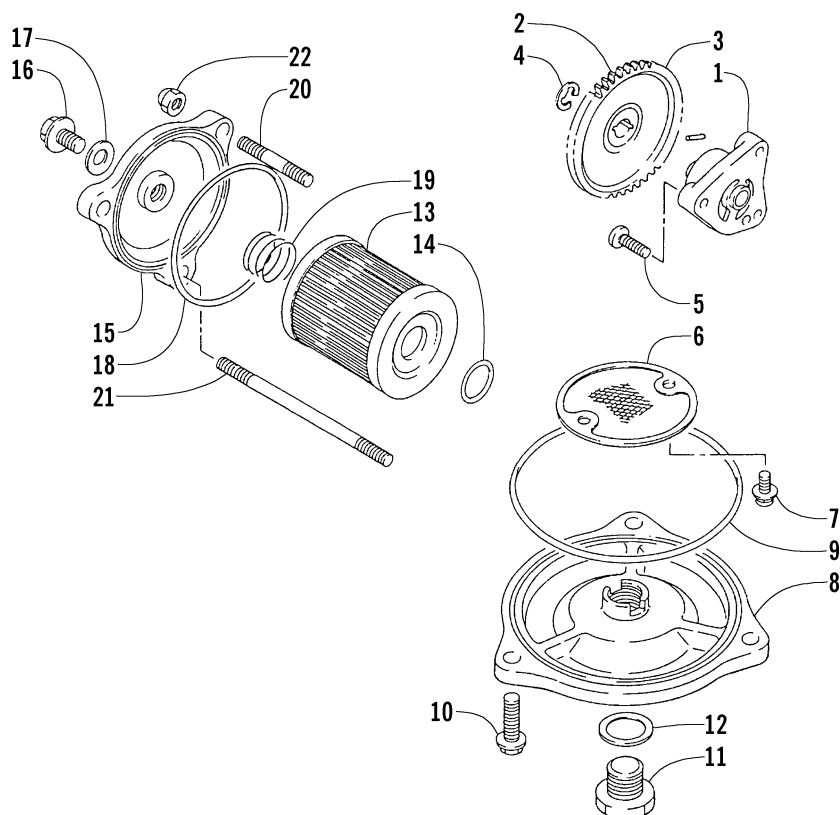
Ref.	Part No.	Qty.	Description	Ref.	Part No.	Qty.	Description
1	3402-398	1	Chain, Camshaft	7	3402-284	1	● Spring
2	3402-399	1	Guide, Camshaft Chain	8	3402-285	1	● Plug
3	3402-400	1	Tensioner, Camshaft Chain	9	3402-286	1	● Bar
4	3423-074	1	Screw, Cap	10	3423-286	1	● O-Ring
5	3003-188	1	Washer	11	3402-287	1	Gasket, Adjuster
6	3402-283	1	Adjuster, Tensioner - Assembly (inc. 7-10)	12	3004-576	2	Screw, Cap



RECOIL STARTER ASSEMBLY

0736-194

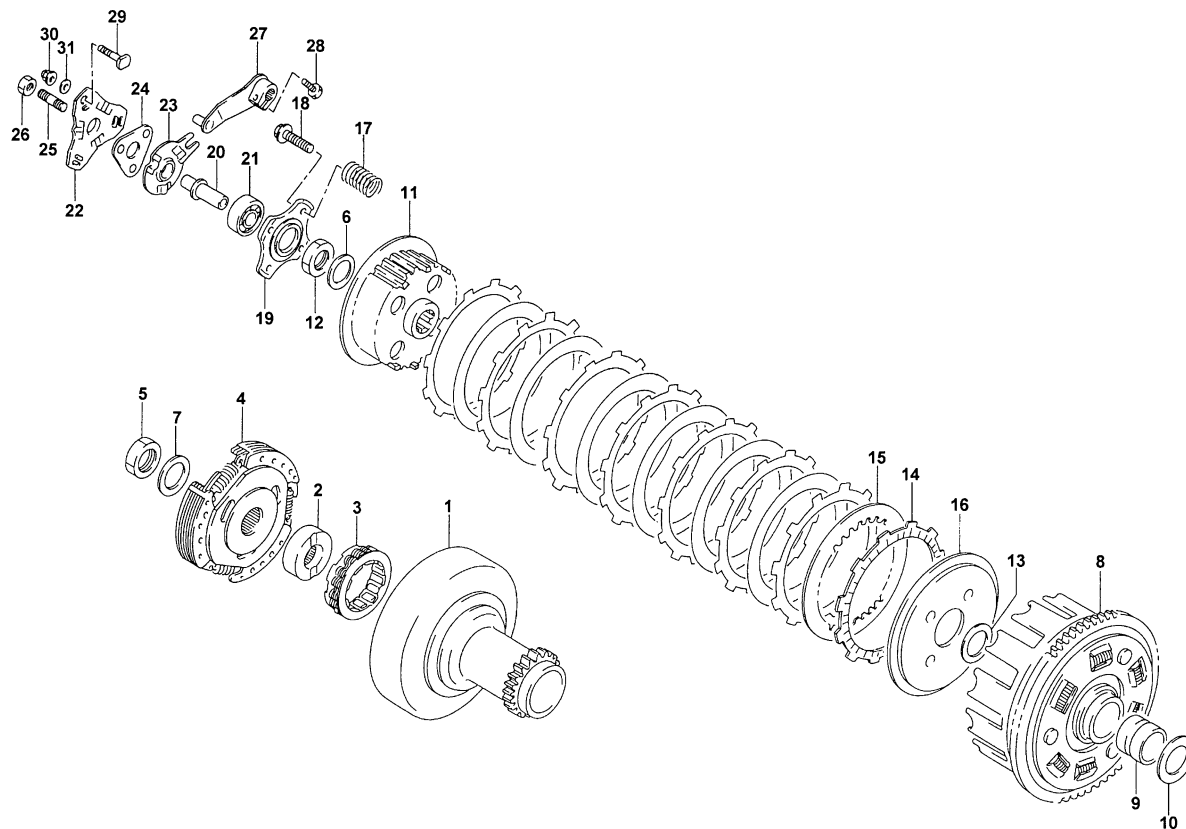
Ref.	Part No.	Qty.	Description	Ref.	Part No.	Qty.	Description
1	3445-018	1	Starter, Recoil - Assembly (inc. 2-6 and 13-14)	7	3445-021	1	Gasket, Recoil
2	3445-019	1	● Reel	8	3423-112	6	Screw, Cap
3	3445-016	1	● Ratchet - Assembly (inc. 13-14)	9	3003-290	1	Gasket
4	3445-007	1	● Spring, Spiral	10	3445-022	1	Cup, Starter
5	3004-488	1	● Nut	11	3004-336	1	Nut
6	3445-020	1	● Rope Assembly	12	3004-362	1	Washer, Lock
				13	3445-005	1	Ratchet
				14	3445-006	1	Guide, Ratchet



OIL PUMP ASSEMBLY

0733-752

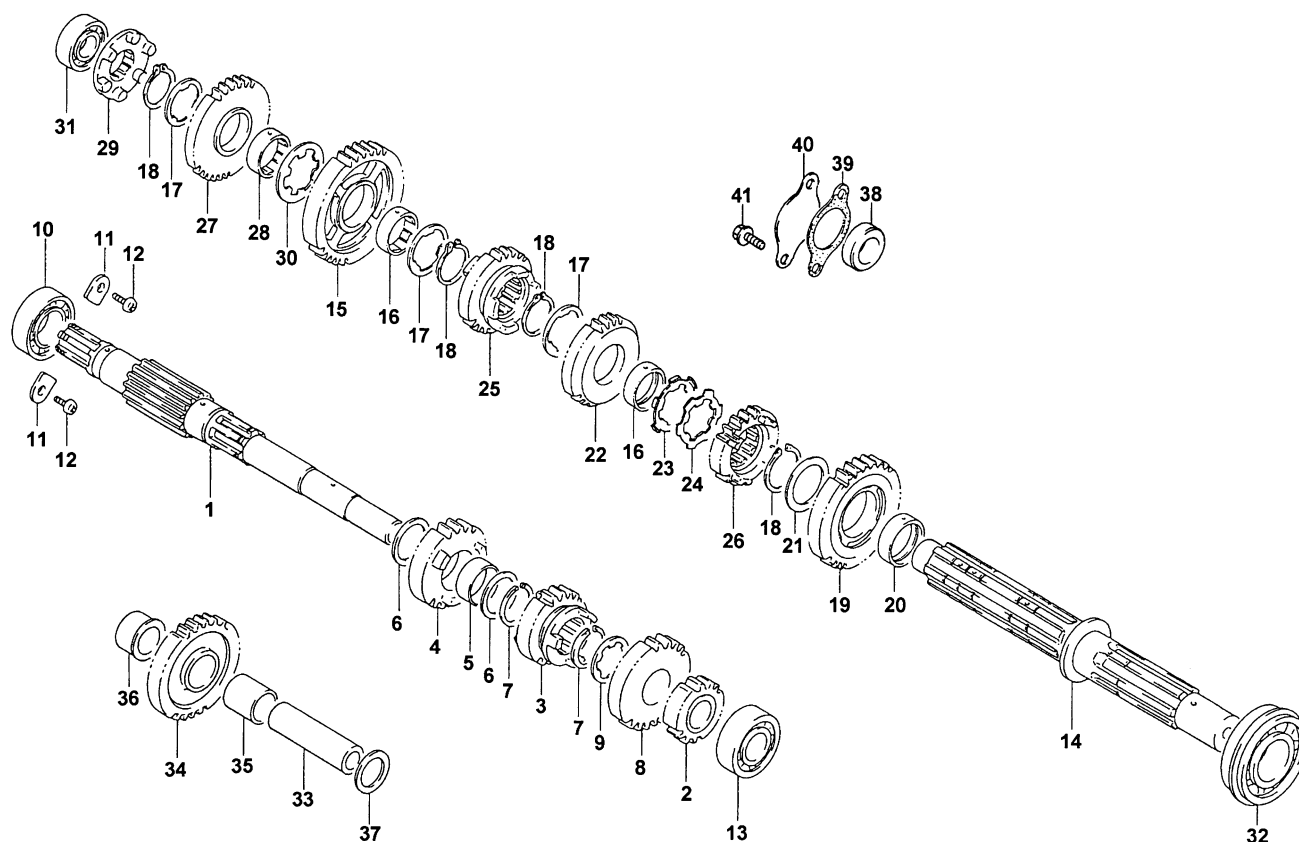
Ref.	Part No.	Qty.	Description	Ref.	Part No.	Qty.	Description
1	3445-017	1	Pump, Oil	12	3402-012	1	Gasket
2	3402-302	1	Gear, Driven	13	3436-005	1	Filter, Oil
3	3423-285	1	Pin	14	3423-270	1	O-Ring
4	3423-168	1	Circlip	15	3402-303	1	Cap, Oil Filter
5	3004-402	3	Screw, Cap	16	3004-705	1	Plug, Oil Check
6	3402-304	1	Strainer, Oil	17	3005-242	1	Gasket
7	0693-389	2	Screw, Cap	18	3423-277	1	O-Ring
8	3402-305	1	Cap, Oil Strainer	19	3402-238	1	Spring
9	3423-278	1	O-Ring	20	3423-314	2	Bolt, Stud
10	3004-507	3	Screw, Cap	21	3004-543	1	Bolt, Stud
11	3402-037	1	Plug, Drain	22	3423-315	3	Nut



CLUTCH ASSEMBLY

0733-753

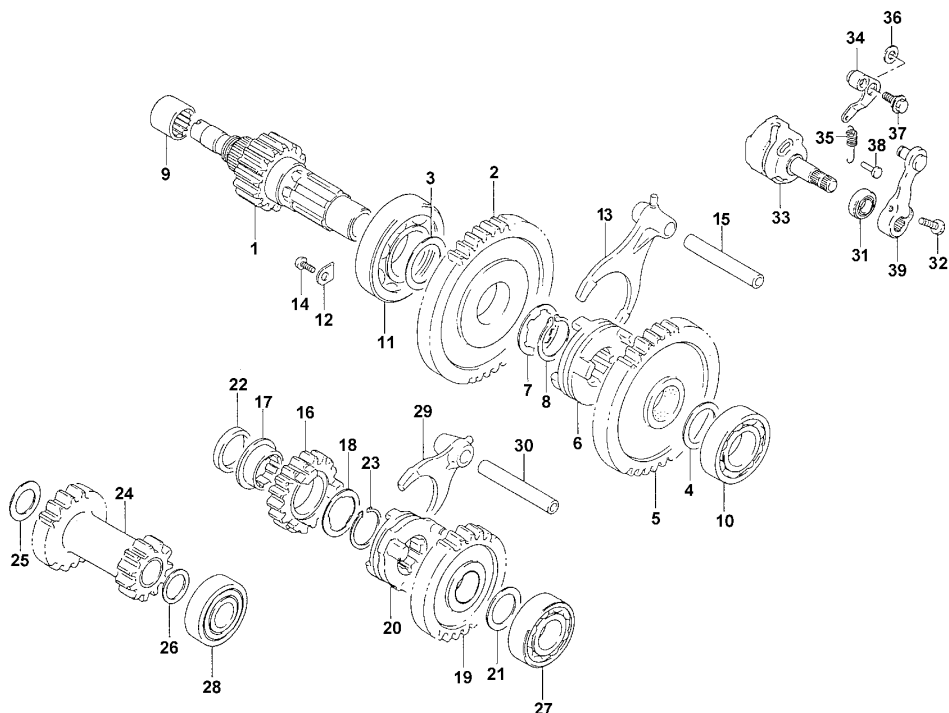
Ref.	Part No.	Qty.	Description	Ref.	Part No.	Qty.	Description
1	3446-253	1	Gear, Primary Drive	17	3402-239	4	Spring
2	3446-129	1	Race, Inner	18	3004-341	4	Screw, Cap
3	3446-122	1	Clutch, One Way	19	3446-127	1	Plate, Release
4	3446-257	1	Clutch Assembly	20	3446-130	1	Rod, Push
5	3423-253	1	Nut	21	3402-043	1	Bearing
6	3423-032	1	Washer, Lock	22	3446-133	1	Guide, Ball - Outer
7	3423-260	1	Washer, Lock	23	3446-131	1	Guide, Ball - Inner
8	3446-254	1	Gear, Primary - Assembly	24	3446-134	1	Ball, Release
9	3402-206	1	Spacer	25	3423-248	1	Screw, Adjuster
10	3402-211	1	Washer	26	3423-022	1	Nut, Adjuster
11	3446-255	1	Hub, Clutch	27	3446-132	1	Arm, Release
12	3423-254	1	Nut	28	3423-125	1	Screw, Cap
13	3423-316	1	Washer	29	3423-245	3	Screw, Cap
14	3446-124	7	Plate, Drive	30	0693-316	3	Nut
15	3446-125	6	Plate, Driven	31	3003-290	3	Seal, Cap Screw
16	3446-256	1	Plate, Clutch Pressure				



TRANSMISSION ASSEMBLY

0737-818

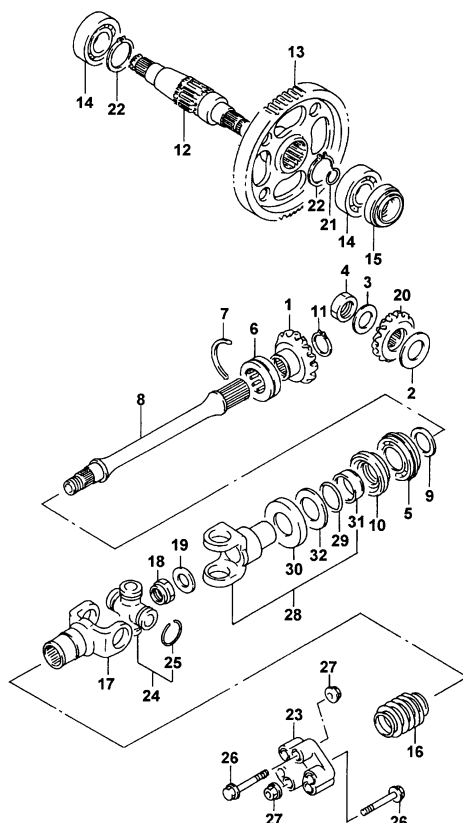
Ref.	Part No.	Qty.	Description	Ref.	Part No.	Qty.	Description
1	3446-135	1	Countershaft	21	3423-317	1	Washer
2	3446-137	1	Gear, 2nd Drive	22	3446-143	1	Gear, 3rd Driven
3	3446-138	1	Gear, 3rd Drive	23	3423-266	1	Washer, Lock
4	3446-139	1	Gear, 4th Drive	24	3423-262	1	Washer, Lock
5	3402-229	1	Bushing	25	3446-146	1	Gear, 4th Driven
6	3402-210	2	Washer	26	3446-147	1	Gear, 5th Driven
7	3423-279	2	Circlip	27	3446-151	1	Gear, Reverse Driven
8	3446-140	1	Gear, 5th Drive	28	3446-145	1	Bushing
9	3423-261	1	Washer	29	3446-152	1	Dog, Reverse
10	0691-374	1	Bearing - Right	30	3423-263	1	Washer
11	3446-031	2	Retainer	31	3402-218	1	Bearing - Right
12	3004-552	2	Screw	32	3402-220	1	Bearing - Middle
13	3402-224	1	Bearing - Middle	33	3446-148	1	Shaft, Reverse Idle
14	3446-136	1	Driveshaft	34	3446-149	1	Gear, Reverse Idle
15	3446-141	1	Gear, 1st Driven	35	3402-228	1	Bushing
16	3446-144	2	Bushing	36	3446-150	1	Spacer
	3446-273	2	Bushing (4X4)	37	3402-209	1	Washer
17	3423-036	3	Washer	38	3402-255	1	Plug, Cover - Hole
18	3423-066	4	Circlip	39	3446-244	1	Gasket, Cover Plug Retainer
19	3446-142	1	Gear, 2nd Driven	40	3446-260	1	Retainer, Cover Plug
20	3402-230	1	Bushing	41	3423-363	2	Bolt, Retainer



SECONDARY TRANSMISSION ASSEMBLY

0737-819

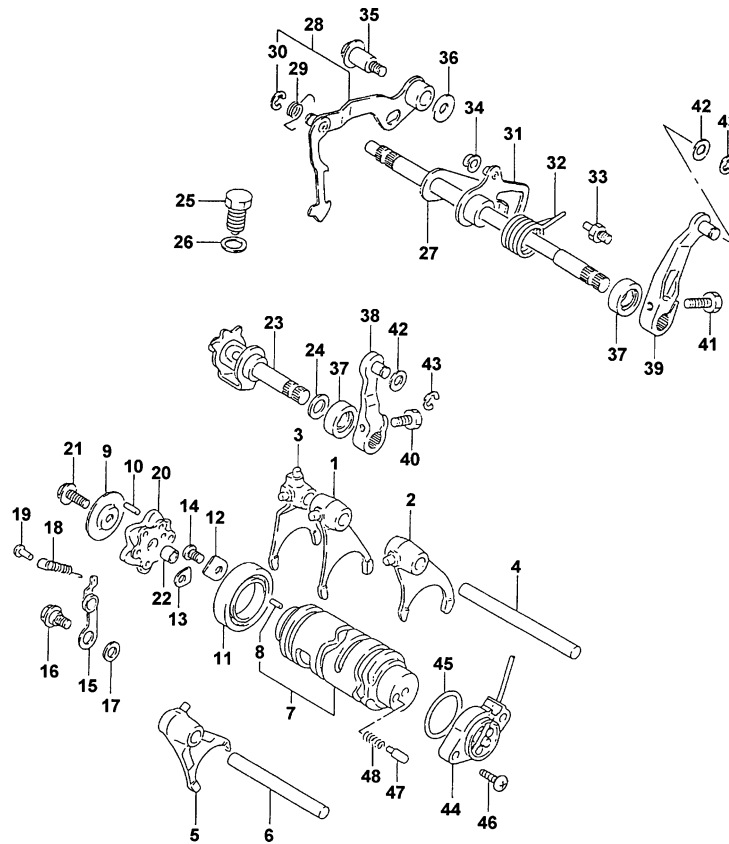
Ref.	Part No.	Qty.	Description	Ref.	Part No.	Qty.	Description
1	3446-179	1	Shaft, Sub-Transmission	20	3446-183	1	Dog, Drive Gear
	3446-206	1	Shaft, Sub-Transmission (4X4)	21	3402-195	1	Washer
2	3446-184	1	Gear, Driven	22	3402-207	1	Spacer
	3446-207	1	Gear, Driven (4X4)	23	3423-066	1	Circlip
3	3423-338	1	Washer - Right (4X4)	24	3446-272	1	Gear, Idler
4	3423-298	1	Washer - Left (4X4)	25	3402-205	1	Washer
5	3446-208	1	Gear, Driven (4X4)	26	3423-319	1	Washer
6	3446-209	1	Dog, Driven Gear (4X4)	27	3003-261	1	Bearing, Drive - Left
7	3423-317	1	Washer (4X4)	28	3402-217	1	Bearing, Countershaft - Left
8	3423-318	1	Circlip	29	3446-185	1	Fork
9	3402-278	1	Bearing - Right	30	3446-271	1	Shaft
10	3004-209	1	Bearing - Left	31	3402-076	1	Seal, Oil
11	3402-180	1	Bearing - Middle	32	3423-125	1	Screw, Cap
12	3446-031	2	Retainer	33	3446-186	1	Cam, Sub-Transmission Gear
13	3446-210	1	Fork (4X4)	34	3446-187	1	Stopper
14	3004-552	2	Screw	35	3402-241	1	Spring
15	3446-230	1	Shaft (4X4)	36	3423-141	1	Washer
16	3446-181	1	Gear, Drive	37	3423-240	1	Screw, Cap
17	3446-259	1	Bushing	38	3423-268	1	Pin (4X4)
18	3423-036	1	Washer	39	3446-116	1	Arm
19	3446-182	1	Gear, Drive				



SECONDARY GEAR/OUTPUT SHAFT ASSEMBLY

0733-756

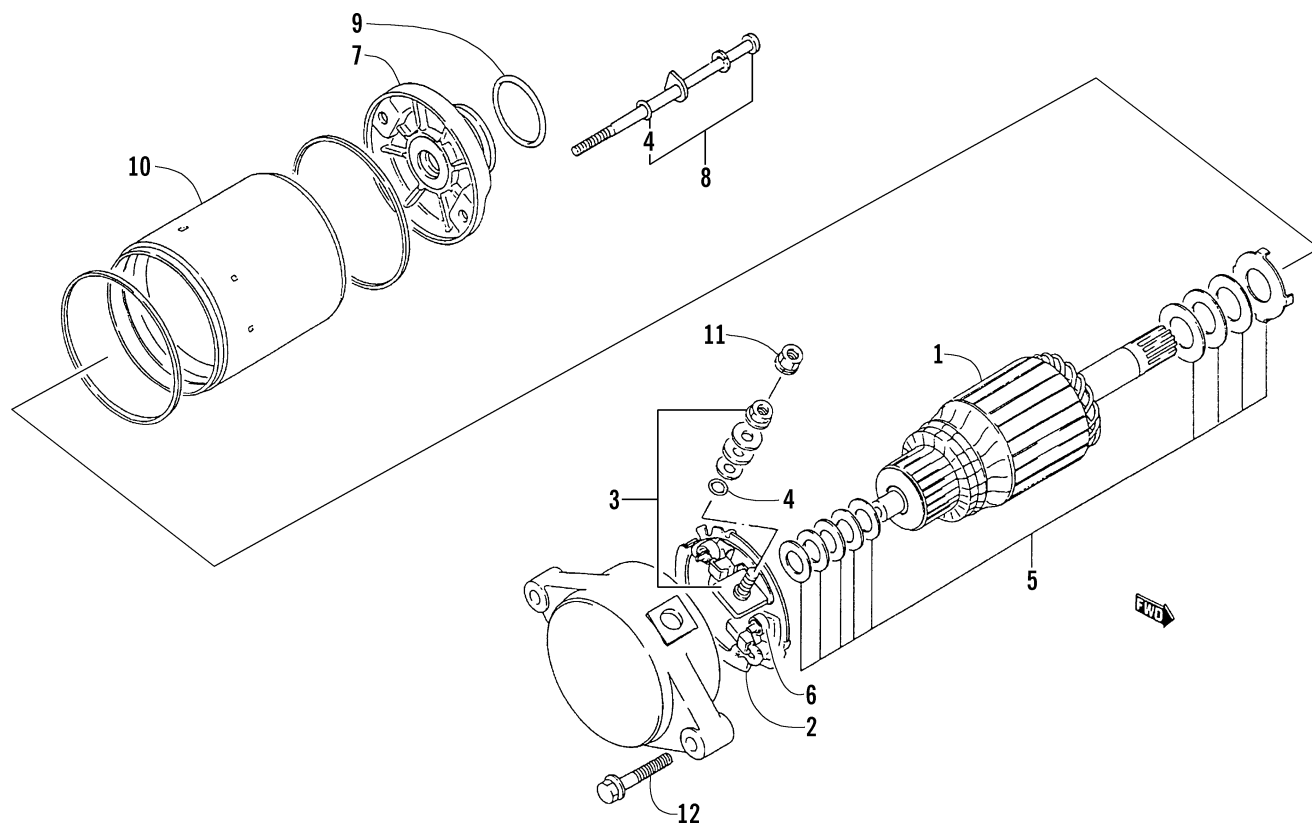
Ref.	Part No.	Qty.	Description	Ref.	Part No.	Qty.	Description
1	3446-269	1	Gear, Secondary Drive Bevel (4X4)	11	3423-340	1	Circlip (4X4)
2	3446-035	1	Shim Set, Secondary Drive Bevel (4X4)	12	3446-176	1	Shaft, Rear Final Driven
3	3423-032	1	Washer (4X4)	13	3446-175	1	Gear, Driven
4	3423-254	1	Nut (4X4)	14	3402-219	2	Bearing
5	3402-067	1	Bearing, Front (4X4)	15	3402-072	2	Seal, Oil
6	3402-515	1	Bearing, Rear (4X4)	16	3435-005	1	Boot (4X4)
7	3423-072	1	Ring (4X4)	17	3435-002	1	Yoke, Output Shaft Joint (4X4)
8	3446-199	1	Shaft, Secondary Output (4X4)	18	3423-025	1	Nut (4X4)
9	3402-308	AR	Shim, 25 x 34 x 0.50 mm (4X4)	19	3423-028	1	Washer (4X4)
	3402-017	AR	Shim, 25 x 34 x 0.60 mm (4X4)	20	3446-270	1	Gear, Secondary Driven Bevel (4X4)
	3402-018	AR	Shim, 25 x 34 x 0.65 mm (4X4)	21	3423-281	2	Ring
	3402-019	AR	Shim, 25 x 34 x 0.70 mm (4X4)	22	3423-321	2	Circlip
	3402-020	AR	Shim, 25 x 34 x 0.75 mm (4X4)	23	3435-007	1	Coupling (4X4)
	3402-021	AR	Shim, 25 x 34 x 0.80 mm (4X4)	24	3435-011	1	Joint, Universal (inc. 25) (4X4)
	3402-022	AR	Shim, 25 x 34 x 0.85 mm (4X4)	25	3423-067	4	● Circlip
	3402-023	AR	Shim, 25 x 34 x 0.90 mm (4X4)	26	3423-182	6	Screw, Cap (4X4)
	3402-024	AR	Shim, 25 x 34 x 0.95 mm (4X4)	27	3004-491	6	Nut (4X4)
	3402-025	AR	Shim, 25 x 34 x 1.00 mm (4X4)	28	3435-001	1	Yoke, Output - Front (inc. 29-32) (4X4)
	3402-028	AR	Shim, 25 x 34 x 1.05 mm (4X4)	29	3423-060	1	● O-Ring
	3402-029	AR	Shim, 25 x 34 x 1.10 mm (4X4)	30	3423-035	1	● Plate
	3402-030	AR	Shim, 25 x 34 x 1.15 mm (4X4)	31	3435-029	1	● Collar
	3402-031	AR	Shim, 25 x 34 x 1.20 mm (4X4)	32	3435-030	1	● Plate, Oil Seal
10	3402-072	1	Seal, Oil				



GEAR SHIFTING ASSEMBLY

0733-757

Ref.	Part No.	Qty.	Description	Ref.	Part No.	Qty.	Description
1	3446-155	1	Fork, Gear Shifting	26	3402-012	1	Gasket
2	3446-156	1	Fork, Gear Shifting	27	3446-169	1	Shaft, Gear Shifting
3	3446-159	1	Fork, Gear Shifting	28	3446-170	1	Arm, Gear Shifting (inc. 29-30)
4	3446-167	1	Shaft	29	3402-312	1	● Spring
5	3446-157	1	Fork, Gear Shifting	30	3423-368	1	● E-Ring
6	3446-051	1	Shaft		3423-323	1	● E-Ring (4X4)
7	3446-160	1	Cam, Gear Shifting (inc. 8)	31	3446-171	1	Arm, Link
8	3423-114	1	● Pin	32	3402-094	1	Spring
9	3446-162	1	Retainer, Pin	33	3446-172	1	Stopper, Arm
10	3423-045	6	Pin	34	3402-132	1	Roller
11	3402-051	1	Bearing	35	3423-233	1	Screw, Cap
12	3446-163	1	Retainer	36	3423-324	1	Washer
13	3446-031	1	Retainer	37	3402-076	2	Seal, Oil
14	3004-552	2	Screw, Cap	38	3446-055	1	Arm
15	3446-165	1	Stopper, Cam	39	3446-115	1	Arm, Reverse Shift
16	3423-240	1	Screw, Cap	40	3423-125	1	Screw, Cap
17	3423-141	1	Washer	41	3423-228	1	Screw, Cap
18	3402-240	1	Spring	42	3423-204	2	Washer
19	3423-268	1	Pin	43	3423-168	2	E-Ring
20	3446-166	1	Plate, Stopper	44	3430-032	1	Base, Gear Shift - Assembly
21	3004-376	1	Screw, Cap	45	3423-273	1	O-Ring
22	3005-206	1	Pin	46	3423-325	2	Screw, Cap
23	3446-161	1	Cam, Reverse Shifting	47	3423-044	1	Contact
24	3423-322	1	Washer	48	3402-087	1	Spring
25	3446-164	1	Stopper, Cam				

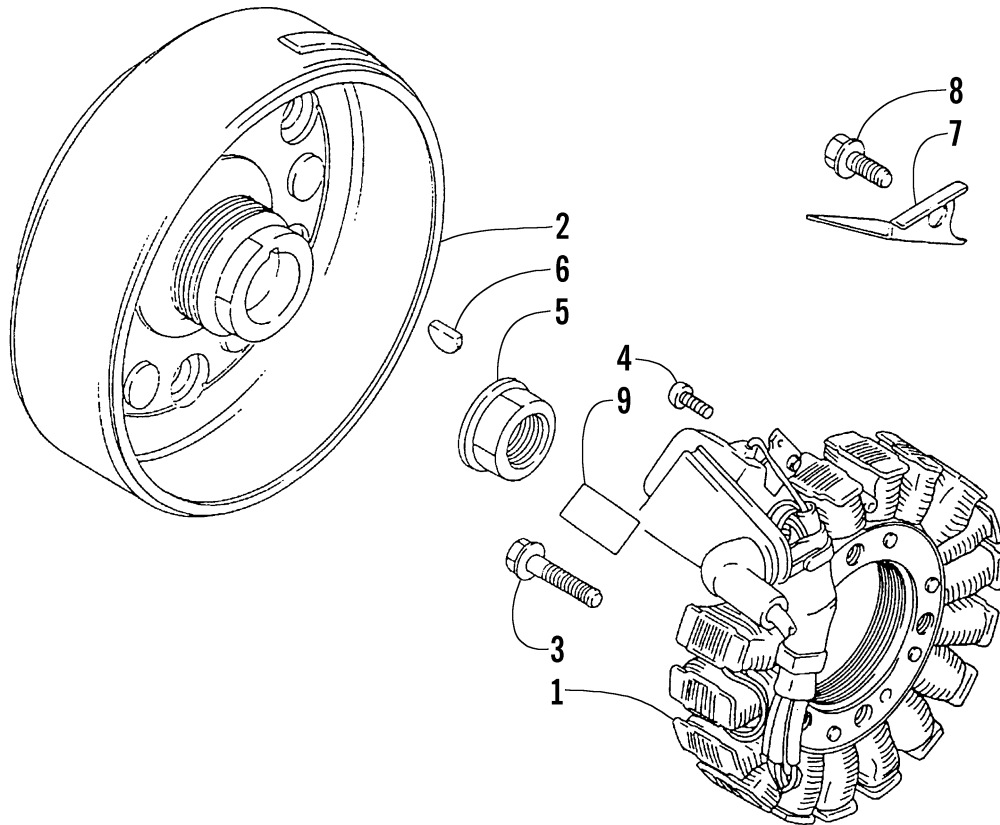


STARTER MOTOR ASSEMBLY

(Complete Assembly p/n 3545-003)

0733-760

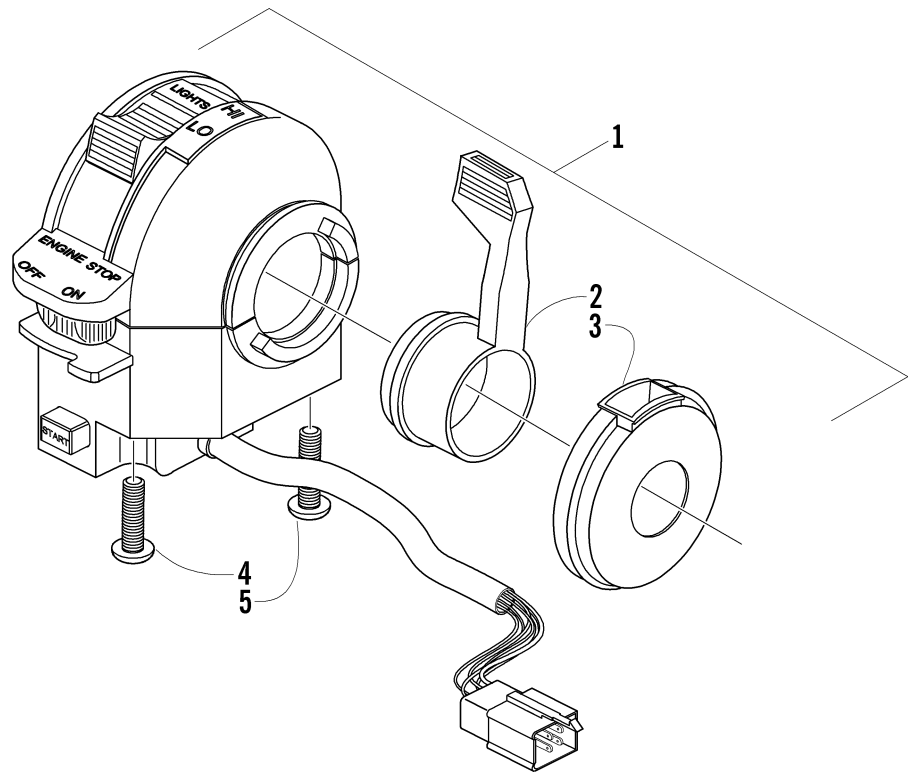
Ref.	Part No.	Qty.	Description	Ref.	Part No.	Qty.	Description
1	3008-554	1	Armature	7	3008-552	1	Bracket, Front - Assembly
2	3008-550	1	Holder Set, Brush	8	3423-289	2	Through-Bolt Set (inc. two No. 4)
3	3008-549	1	Terminal Set, Brush (inc. one No. 4)	9	3423-272	1	O-Ring
4	3008-164	3	● O-Ring	10	3008-553	2	O-Ring
5	3008-099	1	Washer Set	11	3423-195	1	Nut
6	3008-551	2	Spring, Brush	12	3004-756	2	Screw, Cap



MAGNETO ASSEMBLY

0733-761

Ref.	Part No.	Qty.	Description	Ref.	Part No.	Qty.	Description
1	3430-021	1	Stator - Assembly	6	3004-540	1	Key
2	3430-039	1	Rotor/Flywheel	7	3430-023	1	Plate
3	3004-756	3	Bolt	8	3423-112	1	Screw, Cap
4	3423-326	2	Screw, Cap	9	3430-036	1	Shield, Heat Protection
5	3423-086	1	Nut				



CONTROL SWITCH HOUSING ASSEMBLY

0737-650

Ref.	Part No.	Qty.	Description	Ref.	Part No.	Qty.	Description
1	3509-001	1	Switch, Handlebar Control - Assembly (inc. 2-5)	3	3409-010	1	● Cover, Choke Lever
2	3409-009	1	● Lever, Choke	4	3423-196	1	● Screw, Cap
				5	3423-197	1	● Screw, Cap

40

RELATED ITEMS

2003 ATV 250

2x4 Red (Model No. A2003ATE2AUSR)

4x4 Red (Model No. A2003ATE4AUSR)

2x4 Green (Model No. A2003ATE2AUSG)

4x4 Green (Model No. A2003ATE4AUSG)

0436-337	Bag, Rack, Front, Black - Deluxe	0436-014	Safety Flag
0436-336	Bag, Rack, Rear, Black - Deluxe	0436-168	Shock Covers, Front & Rear
0436-185	Bag, Tank, Black	0436-228	Snowplow Blade, 50 in. - Straight (use w/0436-356)
0436-432	Brush Guard/Bumper, Deluxe (4x4)	0436-287	Snowplow Blade, 50 in. - One-Way (use w/0436-356)
0436-330	Bumper (Rear)	0436-356	Snowplow Push Frame
0436-139	Cargo Trailer - Deluxe	0436-233	Snowplow Remote Angle Adjust
0436-381	Cover, Green and Black	0436-357	Snowplow Attachment Kit
0436-125	Cover, Gray - Universal	0436-383	Snowplow, Hand Lift Lever Kit
0436-304	CV Joint Protectors, Deluxe (Front)	0436-026	Tire Chains, Size B
0436-087	Electrical Plug	0402-319	Tire, Titan AT489A (25x10-12)
0436-199	Gun Scabbard w/Mount	0402-317	Tire, Titan AT489A (24x9-12)
0436-352	Hand/Thumb Warmers	0402-316	Tire, Titan AT489A (23x8-12)
0436-103	Hourmeter	0436-297	Tool Holder - Double (Pair)
2256-684	Illustrated Parts Manual	0436-263	Tool Holder - Single (Pair)
0436-122	Lunch Pack, Black	0436-068	Winch Accessories Kit
0436-093	Mud Flap Kit, Front	0436-329	Winch Kit, 2500 lb
2256-593	Operator's Manual	0436-361	Winch Mounting Kit
0652-024	Paint, Metal - Black	0436-303	Windshield, Clear
0436-177	Prefilter, Air Filter	0436-301	Windshield, Clear w/Accent
0436-349	Rack Extension, 4 in. (Front)	0436-302	Windshield, Smoke w/Accent
0436-225	Rack Extension, 4 in. (Rear)		
0436-226	Rack Extension, 8 in. (Rear)		
0436-201	Rack Pouch, STD Rack, Black		

