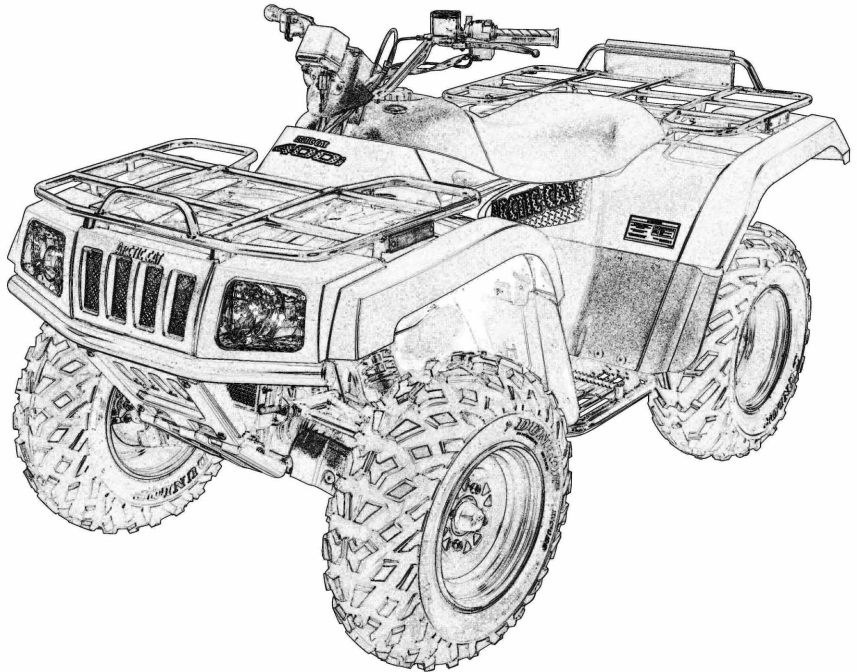


ATV
Illustrated Parts Manual
2003 ARCTIC CAT®



300 2x4 • 300 4x4

Model No.	A2003ATF2AUSR	(2x4 - Red)
Model No.	A2003ATF2AUSG	(2x4 - Green)
Model No.	A2003ATF4AUSR	(4x4 - Red)
Model No.	A2003ATF4AUSG	(4x4 - Green)

TABLE OF CONTENTS

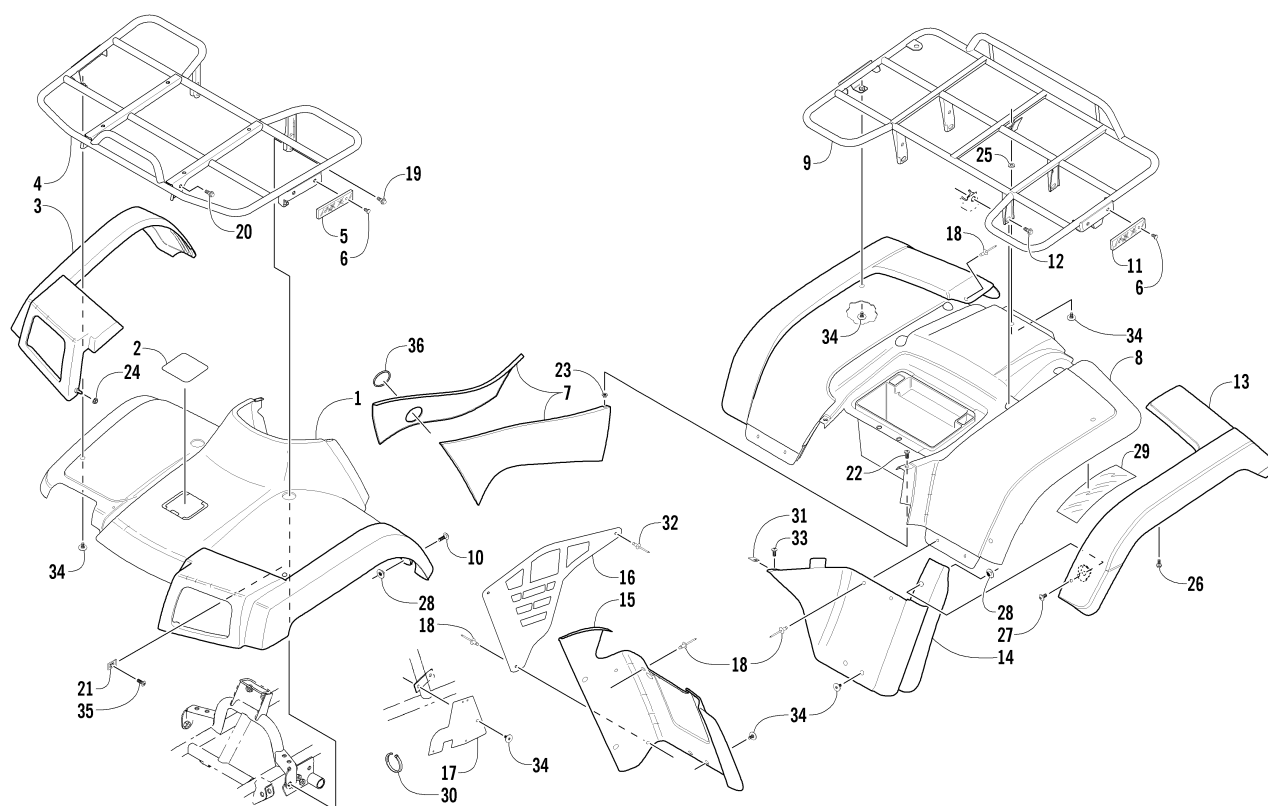
2003 ATV 300

2x4 Red (Model No. A2003ATF2AUSR)
4x4 Red (Model No. A2003ATF4AUSR)

2x4 Green (Model No. A2003ATF2AUSG)
4x4 Green (Model No. A2003ATF4AUSG)

BODY PANEL ASSEMBLY	1
TAILLIGHT ASSEMBLY	2
DECALS	3
FRAME AND RELATED PARTS	4
SEAT ASSEMBLY	5
STEERING ASSEMBLY	6
FRONT SUSPENSION ASSEMBLY	7
REAR SUSPENSION ASSEMBLY	8
WHEEL AND TIRE ASSEMBLY	9
AUXILIARY BRAKE ASSEMBLY	10
HYDRAULIC HAND BRAKE ASSEMBLY	11
HYDRAULIC BRAKE ASSEMBLY	12
GAS TANK ASSEMBLY	13
REVERSE SHIFT LEVER ASSEMBLY	14
AIR INTAKE ASSEMBLY	15
SHIFTER ASSEMBLY	16
FRONT DRIVE SHIFT LINKAGE ASSEMBLY (4X4).....	17
FRONT DRIVE GEARCASE ASSEMBLY (4X4)	18
ENGINE AND RELATED PARTS	19
OIL COOLER ASSEMBLY	20
ELECTRICAL COMPONENTS	21
CARBURETOR	22
CYLINDER HEAD ASSEMBLY	23
CYLINDER ASSEMBLY	24
CRANKCASE ASSEMBLY	25
CRANKCASE COVER ASSEMBLY	26
CRANKSHAFT ASSEMBLY	27
STARTER CLUTCH ASSEMBLY	28
CAMSHAFT/VALVE ASSEMBLY	29
CAM CHAIN ASSEMBLY	30
RECOIL STARTER ASSEMBLY	31
OIL PUMP ASSEMBLY	32
CLUTCH ASSEMBLY	33
TRANSMISSION ASSEMBLY	34
SECONDARY TRANSMISSION ASSEMBLY	35
SECONDARY GEAR/OUTPUT SHAFT ASSEMBLY	36
GEAR SHIFTING ASSEMBLY	37
STARTER MOTOR ASSEMBLY	38
MAGNETO ASSEMBLY	39
CONTROL SWITCH HOUSING ASSEMBLY	40
THROTTLE CASE ASSEMBLY	41
RELATED ITEMS	Back Cover

■ **NOTE:** The illustrations used in this Parts Manual are for reference to replacement part numbers only and are not to be used for assembly. For assembly procedures, use an Arctic Cat Service Manual. Underlined part numbers are new for the 2003 model year.



BODY PANEL ASSEMBLY

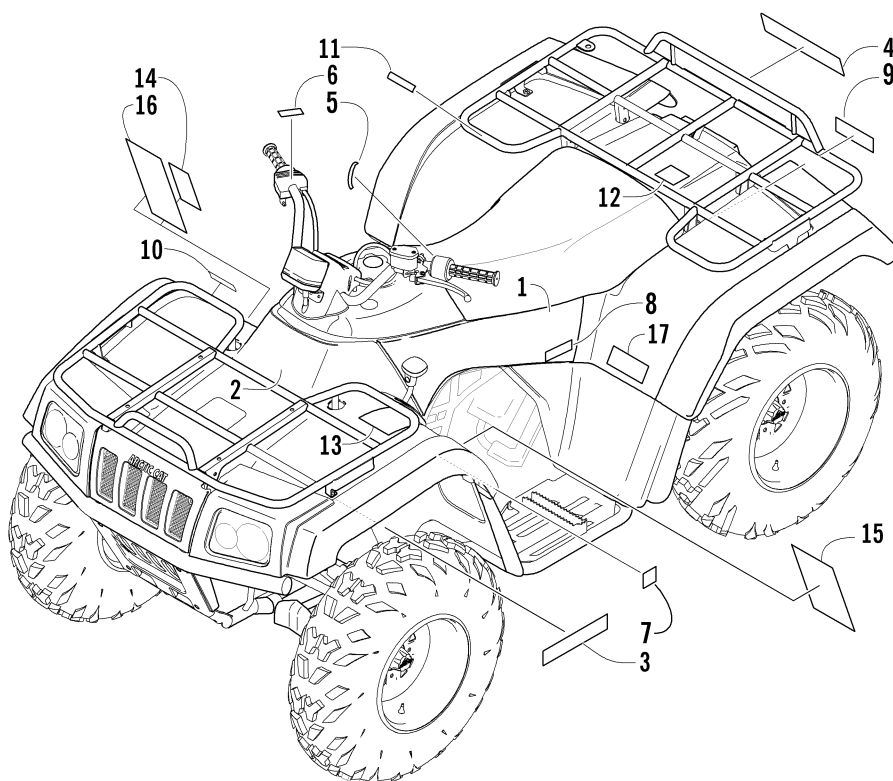
0737-605

Ref.	Part No.	Qty.	Description	Ref.	Part No.	Qty.	Description
1	0506-605	1	Panel, Fender - Front (inc. 2)	14	0406-084	1	Fender Extension - Rear - Right
	0506-604	1	Panel, Fender - Front (inc. 2) (2X4 Green)		0406-085	1	Fender Extension - Rear - Left
	0506-632	1	Panel, Fender - Front (inc. 2) (4X4 Red)	15	0506-272	1	Panel, Kick - Right
	0506-633	1	Panel, Fender - Front (inc. 2) (4X4 Green)		0506-629	1	Panel, Kick - Left
2	1406-142	1	● Cover, Access		0506-625	1	Panel, Kick - Right (4X4)
	1406-141	1	● Cover, Access (Green)		0506-627	1	Panel, Kick - Left (4X4)
3	0506-550	1	Flare - Front - Right (4X4)	16	0406-374	2	Panel, Deflector
	0506-551	1	Flare - Front - Left (4X4)	17	1406-045	2	Fender, Panel - Inner (4X4)
4	0506-525	1	Rack - Front	18	0423-046	AR	Rivet, Plastic
	0506-547	1	Rack - Front (4X4)	19	0423-360	2	Screw, Cap
5	0606-526	2	Reflector, Front - Amber	20	8408-816	2	Screw, Cap
6	0623-269	8	Clip, Retaining	21	0423-031	2	Nut, Speed
7	0506-548	1	Panel, Side - Right	22	0423-068	2	Screw, Machine
	0506-243	1	Panel, Side - Left	23	0123-010	2	Nut, Expansion
	0506-549	1	Panel, Side - Right (Green)	24	0423-357	2	Nut, Stamped (4X4)
	0506-673	1	Panel, Side - Left (Green)	25	0423-332	1	Washer, Rubber
8	0506-617	1	Panel, Fender - Rear	26	0423-342	AR	Screw, Self-Tapping (4X4)
	0506-619	1	Panel, Fender - Rear (2X4 Green)	27	8477-610	2	Screw, Shoulder
	0506-583	1	Panel, Fender - Rear (4X4 Red)		0423-355	2	Screw, Shoulder (4X4)
	0506-588	1	Panel, Fender - Rear (4X4 Green)	28	0423-077	4	T-Nut
9	0506-861	1	Rack - Rear	29	0619-230	AR	Tape, Foil
	0506-821	1	Rack - Rear (4X4)	30	0123-788	AR	Cable Tie - 7.5 in. (4X4)
10	8477-610	2	Screw, Shoulder	31	0423-060	2	Clip, Tinnerman
	0423-356	2	Screw, Shoulder (4X4)	32	0623-362	2	Rivet, Plastic
11	0606-029	2	Reflector, Rear - Red	33	0623-309	2	Screw, Self-Tapping
12	8409-020	4	Screw, Cap	34	0423-101	AR	Screw, Machine
13	0506-552	1	Flare - Rear Right (4X4)	35	8477-616	2	Screw, Machine
	0506-553	1	Flare - Rear Left (4X4)	36	0470-404	1	Grommet, Fuel Shut-Off Valve Knob



(Complete Taillight Assembly p/n 0409-002)

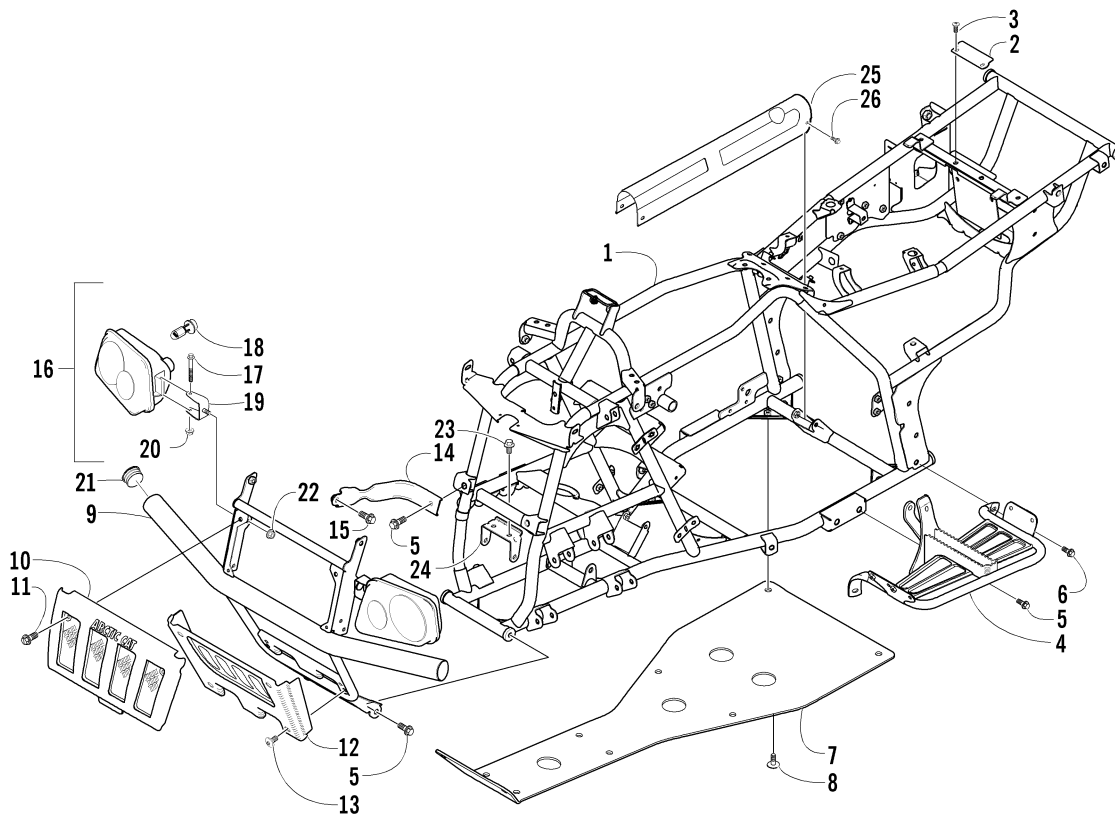
2



DECALS

0737-606

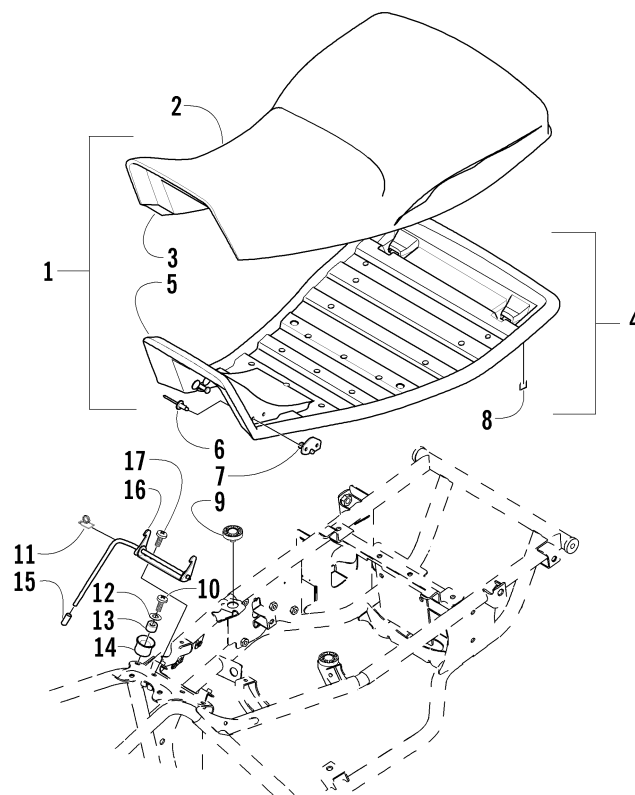
Ref.	Part No.	Qty.	Description	Ref.	Part No.	Qty.	Description
1	<u>0411-511</u>	1	Decal, Side - Right	6	0411-324	1	Decal, Instruction - Start In Gear (4X4)
	<u>0411-512</u>	1	Decal, Side - Left	7	0411-086	1	Decal, Shift Pattern
	<u>0411-509</u>	1	Decal, Side - Right (2X4 Green)	8	<u>0411-587</u>	1	Decal, Hi/Low Range
	<u>0411-510</u>	1	Decal, Side - Left (2X4 Green)		<u>0411-586</u>	1	Decal, Hi/Low Range (4X4)
	<u>0411-515</u>	1	Decal, Side - Right (4X4 Red)	9	0411-269	1	Decal, Warning - Towing
	<u>0411-516</u>	1	Decal, Side - Left (4X4 Red)	10	0411-006	1	Decal, Warning - Front Rack Load
	<u>0411-513</u>	1	Decal, Side - Right (4X4 Green)	11	0411-007	1	Decal, Warning - Rear Rack Load
	<u>0411-514</u>	1	Decal, Side - Left (4X4 Green)	12	0411-435	1	Decal, Passenger
2	<u>0411-528</u>	1	Decal, Front	13	0411-401	1	Decal, Warning - Age
	<u>0411-527</u>	1	Decal, Front (Green)	14	0411-008	1	Decal, Warning - Reverse/Pre-Ride
3	<u>0411-503</u>	1	Decal, CA Emissions	15	0411-218	1	Decal, Warning - General
4	<u>0411-501</u>	1	Decal, "Arctic Cat" (4X4)	16	0411-045	1	Decal, Warning - Turn
5	0411-325	1	Decal, Instruction - Choke	17	0411-430	1	Decal, Warning - Tire Pressure



FRAME AND RELATED PARTS

0737-752

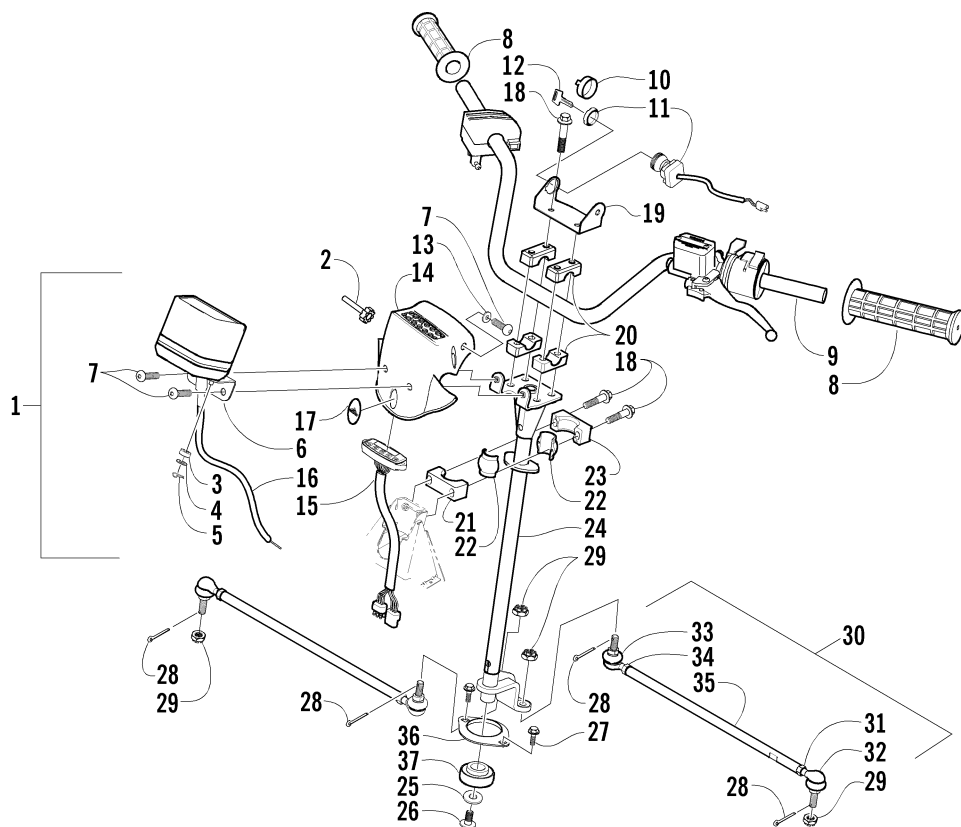
Ref.	Part No.	Qty.	Description	Ref.	Part No.	Qty.	Description
1	<u>0506-957</u>	1	Frame, Main	13	0423-362	4	Screw, Machine
	<u>0506-875</u>	1	Frame, Main (4X4)	14	<u>0506-964</u>	2	Channel, Bumper
2	<u>0506-962</u>	1	Bracket, Body Hold-Down	15	8408-812	2	Screw, Cap
3	8476-616	2	Screw, Machine	16	0409-032	1	Headlight - Right (inc. 17-20)
4	<u>0506-959</u>	1	Footrest - Right		0409-031	1	Headlight - Left (inc. 17-20)
	0506-217	1	Footrest - Left	17	8410-860	2	● Screw, Cap
5	8409-020	8	Screw, Cap	18	0409-045	4	● Bulb, Headlight
6	8408-816	4	Screw, Cap	19	0406-945	2	● Bracket, Headlight
7	0406-894	1	Panel, Belly	20	0423-375	2	● Nut, Nylock
8	0423-101	10	Screw, Body	21	0406-130	2	Cap, Bumper (4X4)
9	0506-873	1	Bumper	22	8424-802	2	Nut
	0506-520	1	Bumper (4X4)	23	8408-820	2	Screw, Cap (4X4)
10	0406-832	1	Grille, Upper	24	0506-210	1	Bracket, Front Differential (4X4)
11	0423-361	2	Screw, Machine	25	<u>0506-963</u>	1	Cover, Front Driveshaft (4X4)
12	0406-833	1	Grille, Lower	26	8471-610	4	Screw, Cap (4X4)



SEAT ASSEMBLY

0737-462 *Not a Service Part

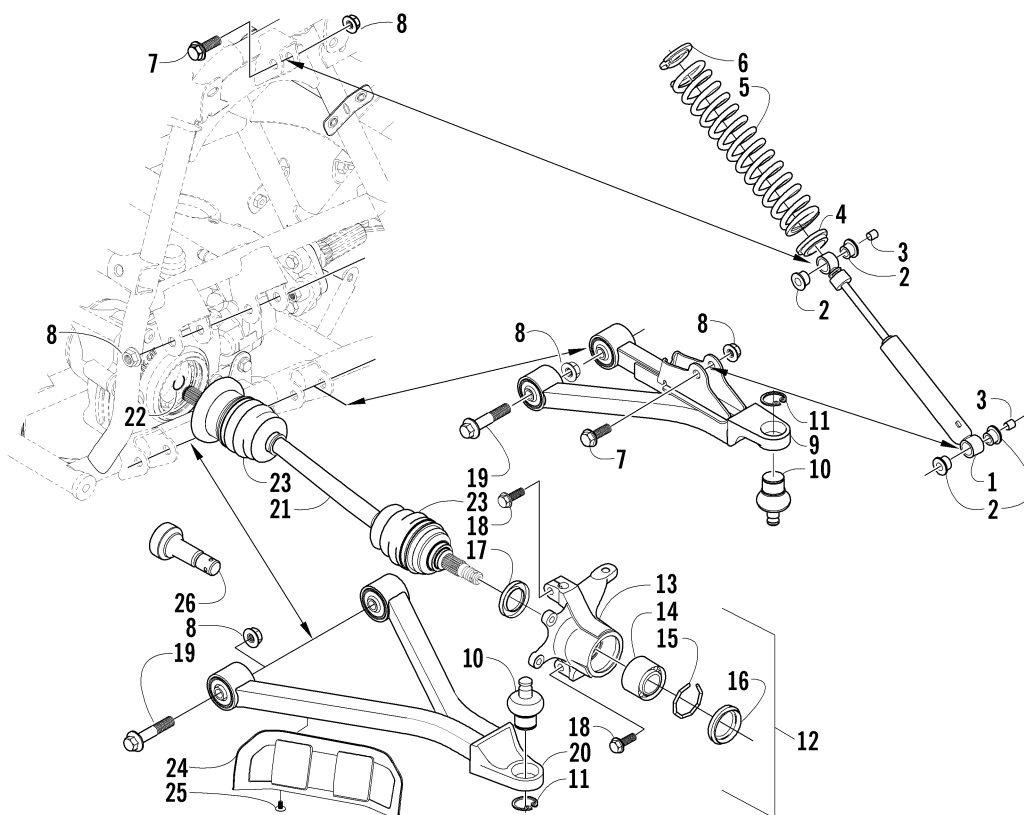
Ref.	Part No.	Qty.	Description	Ref.	Part No.	Qty.	Description
1	0506-681	1	Seat Assembly (inc. 2-8)	10	8476-620	2	Screw, Cap
2	0506-682	1	● Cover, Seat	11	0406-235	1	Spring, Seat Latch
3	0506-291	1	● Foam, Seat	12	8050-217	2	Washer
4	0506-223	1	● Base, Seat - Assembly (inc. 5-7)	13	0406-199	2	Collar, Front Seat-Base
5	*	1	● Base, Seat	14	0406-171	2	Bumper, Seat-Base - Front
6	8061-628	4	● Rivet	15	0623-404	1	Cap, Protector
7	<u>1506-057</u>	2	● Pin, Seat-Base - Front	16	<u>1506-056</u>	1	Latch, Seat - Assembly
8	0624-100	AR	● Staple	17	8476-616	2	Screw, Machine
9	0406-309	2	Grommet, Seat - Center				



STEERING ASSEMBLY

0737-835

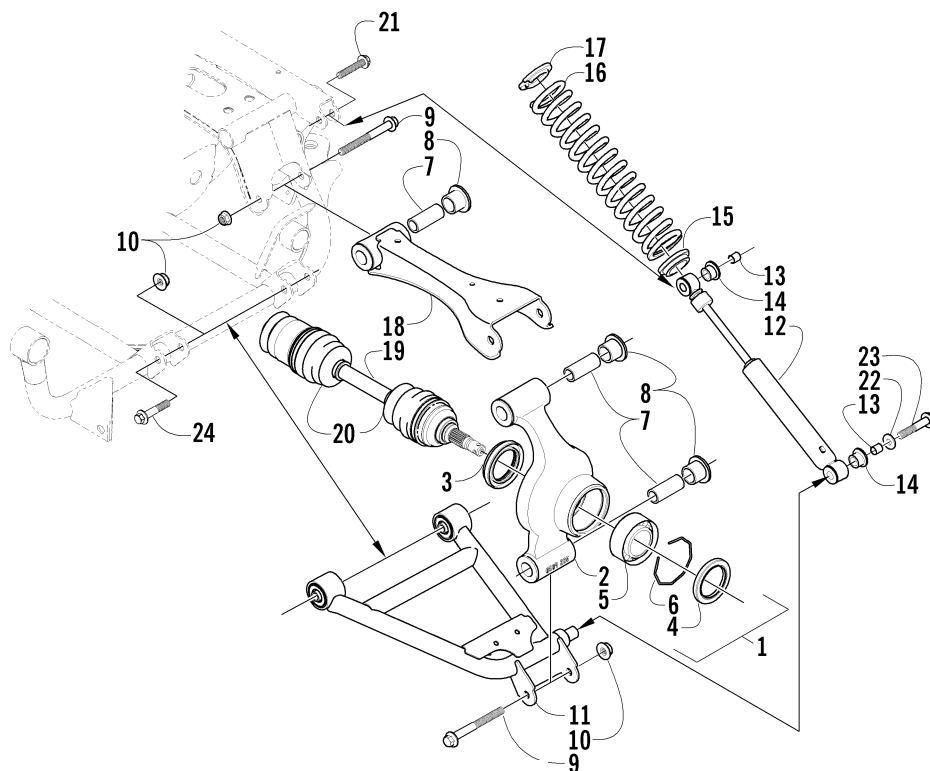
Ref.	Part No.	Qty.	Description	Ref.	Part No.	Qty.	Description
1	0420-040	1	Speedometer (inc. 2-6) (4X4)	18	8408-860	6	Screw, Cap
2	0420-027	1	● Knob, Speedometer Trip (4X4)	19	0506-348	1	Bracket, Key Switch
3	0420-016	2	● Mount, Rubber (4X4)	20	0405-035	4	Cap, Steering Adjuster
4	0420-017	2	● Washer (4X4)	21	0605-171	1	Housing, Bearing - Lower
5	0420-015	2	● Pin, Retainer (4X4)	22	0405-020	2	Bearing, Steering Post
6	0420-018	1	● Bracket, Speedometer (4X4)	23	0605-147	1	Housing, Bearing - Upper
7	8477-616	3	Screw, Machine	24	<u>0505-423</u>	1	Post, Steering
8	<u>0405-106</u>	2	Grip, Handlebar	25	0423-073	1	Washer
9	<u>0505-427</u>	1	Tube, Handlebar	26	8409-020	1	Screw, Cap
10	0409-013	1	Cover, Key	27	8408-816	2	Screw, Cap
11	3430-040	1	Switch, Ignition - Assembly (inc. 12)	28	0623-175	4	Pin, Cotter
12	3409-007	1	● Key, Ignition - Blank (C Series)	29	0423-157	4	Nut, Top Lock
	3409-011	1	● Key, Ignition - Blank (D Series)	30	0505-072	2	Tie Rod, Assembly (inc. 31-35)
	3409-012	1	● Key, Ignition - Blank (E Series)	31	8420-002	2	● Nut - Right
	3409-013	1	● Key, Ignition - Blank (F Series)	32	0405-082	2	● Ball Joint, Tie Rod - Right
13	0423-052	1	Collar, Body	33	0405-083	2	● Ball Joint, Tie Rod - Left
14	0405-063	1	Instrument Pod	34	0423-013	2	● Nut - Left
15	0420-035	1	Panel, LED	35	0405-032	2	● Tie Rod
	0420-034	1	Panel, LED (4X4)	36	0602-233	1	Flange, Bearing
16	0487-025	1	Cable, Speedometer (4X4)	37	0405-052	1	Bearing w/Inverted Oil Seal
17	0405-042	1	Plug, Instrument Pod (2X4)				



FRONT SUSPENSION ASSEMBLY

0737-469

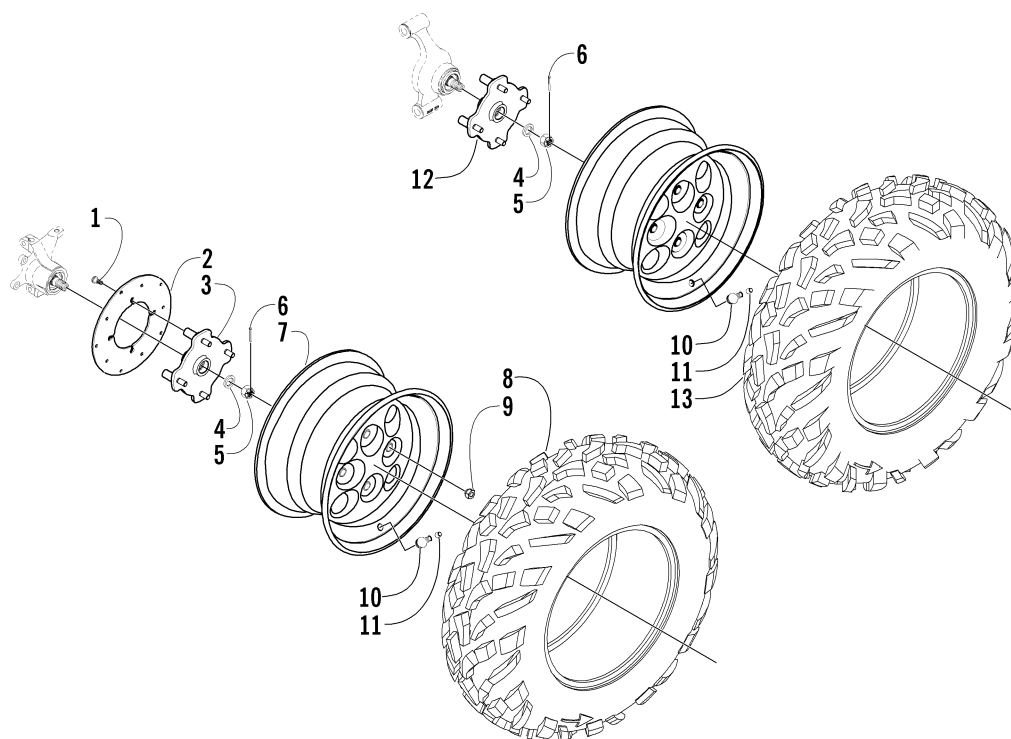
Ref.	Part No.	Qty.	Description	Ref.	Part No.	Qty.	Description
1	0403-036	2	Shock Absorber - Front (inc. 2-3)	13	0505-062	1	● Knuckle, Steering - Right
	0403-015	2	Shock Absorber - Front (inc. 2-3) (4X4)		0505-063	1	● Knuckle, Steering - Left
2	0604-310	8	● Bushing, Shock Absorber	14	0402-275	2	● Bearing, Wheel Hub - Front
3	0403-028	4	● Sleeve, Shock	15	0423-034	2	● Clip, Bearing
4	<u>0403-104</u>	2	Retainer, Spring - Lower	16	0402-089	2	● Seal, Wheel Bearing - Front
5	1603-889	2	Retainer, Spring	17	0402-069	2	● Seal, Wheel Bearing - Rear
6	0403-037	2	Spring, Shock Absorber	18	8409-030	4	Screw, Cap
	0403-022	2	Spring, Shock Absorber (4X4)	19	8409-060	8	Screw, Cap
7	8409-040	4	Screw, Cap	20	0503-037	1	A-Arm, Lower Right (inc. 10-11)
8	8428-002	12	Nut, Lock		0503-036	1	A-Arm, Lower Left (inc. 10-11)
9	0503-026	1	A-Arm, Upper Right - Assembly (inc. 10-11)		0503-092	1	A-Arm, Lower Right (inc. 10-11) (4X4)
	0503-027	1	A-Arm, Upper Left - Assembly (inc. 10-11)		0503-093	1	A-Arm, Lower Left (inc. 10-11) (4X4)
10	<u>0405-115</u>	4	● Ball Joint - Front	21	<u>0402-987</u>	2	Axle, Drive - Front Right (inc. 22-23) (4X4)
11	0423-009	4	● Clip, Ball Joint	22	0441-400	2	● Clip, Retaining (4X4)
12	0505-026	1	Knuckle - Assembly - Right (inc. 13-17)	23	0436-276	4	● Repair Kit, Boot - Front Axle (4X4)
	0505-027	1	Knuckle - Assembly - Left (inc. 13-17)	24	0406-656	2	Guard, Boot - Front Axle (4X4)
				25	0423-101	4	Screw, Body (4X4)
				26	<u>1402-006</u>	2	Axle, Stub (2X4)



REAR SUSPENSION ASSEMBLY

0737-498

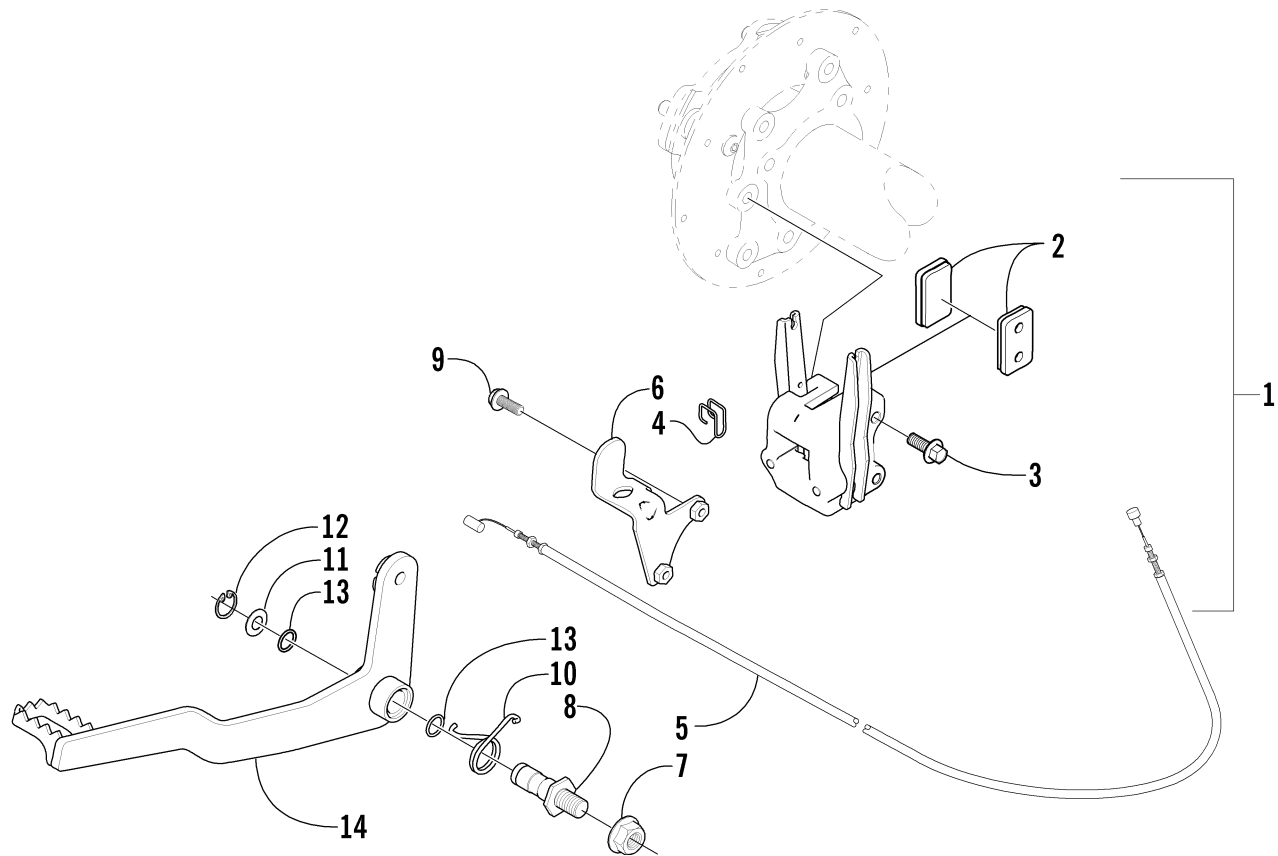
Ref.	Part No.	Qty.	Description	Ref.	Part No.	Qty.	Description
1	0504-226	1	Knuckle, Right - Rear - Assembly (inc. 2-6)	12	0404-014	2	Shock Absorber - Rear (inc. 13-14)
	0504-227	1	Knuckle, Left - Rear - Assembly (inc. 2-6)	13	0403-028	4	● Sleeve, Shock Absorber
2	0504-224	1	● Knuckle - Right	14	0604-310	8	● Bushing, Shock Absorber
	0504-225	1	● Knuckle - Left	15	<u>0403-104</u>	2	Retainer, Spring - Lower
3	0402-069	2	● Seal, Wheel Bearing - Rear	16	0403-002	2	Spring, Suspension
4	0402-089	2	● Seal, Wheel Bearing - Front	17	1603-889	2	Retainer, Spring
5	0402-275	2	● Bearing, Wheel	18	0504-044	2	Arm, Rear - Upper
6	0423-034	2	● Clip, Bearing	19	<u>1402-002</u>	2	Axle, Drive (inc. 20)
7	0403-038	6	Collar, Suspension Bushing	20	0436-276	4	● Repair Kit, Boot - Rear Axle
8	0403-032	12	Bushing, Suspension	21	8409-040	2	Screw, Cap
9	8409-000	6	Screw, Cap	22	0423-087	2	Washer
10	8428-002	12	Nut, Lock	23	8408-820	2	Screw, Cap
11	0504-030	1	A-Arm, Rear - Lower Right	24	8409-060	4	Screw, Cap
	0504-031	1	A-Arm, Rear - Lower Left				



WHEEL AND TIRE ASSEMBLY

0737-503

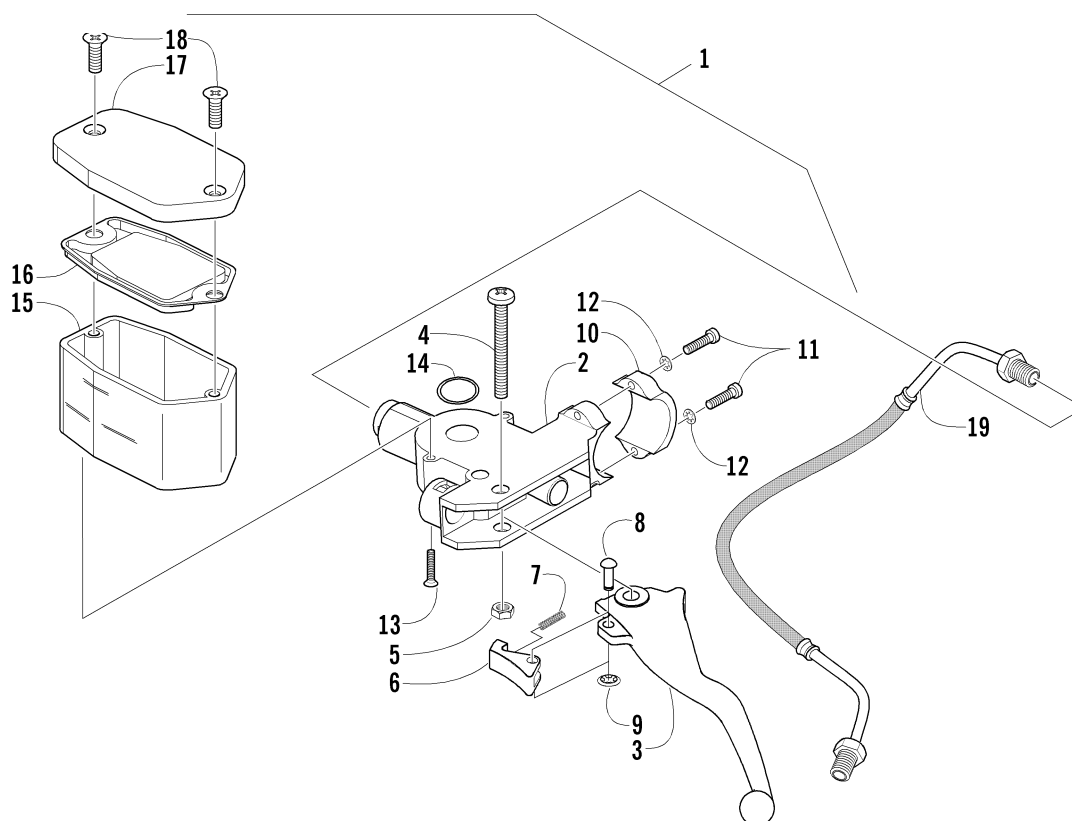
Ref.	Part No.	Qty.	Description	Ref.	Part No.	Qty.	Description
1	0423-029	12	Screw, Machine	8	0402-316	2	Tire - Front
2	0402-874	3	Disc, Brake		0402-317	2	Tire - Front (4X4)
3	<u>0502-361</u>	2	Hub, Wheel - Front	9	0423-408	16	Nut, Mounting - Wheel
	<u>0502-360</u>	2	Hub, Wheel - Front (4X4)	10	0402-064	4	Stem, Valve (inc. 11)
4	0402-181	4	Seal, Hub	11	0402-140	4	● Cap, Valve Stem
5	0423-394	4	Nut, Hex	12	<u>0502-360</u>	1	Hub, Wheel - Rear - Right
6	0423-407	4	Pin, Cotter		<u>0502-359</u>	1	Hub, Wheel - Rear - Left
7	0402-856	4	Wheel Assembly	13	0402-319	2	Tire, Rear



AUXILIARY BRAKE ASSEMBLY

0737-504

Ref.	Part No.	Qty.	Description	Ref.	Part No.	Qty.	Description
1	0502-372	1	Auxiliary Brake Assembly (inc. 2)	8	0406-562	1	Axle, Brake Lever
2	0402-958	2	● Pad, Brake	9	8476-616	2	Screw, Cap
3	8408-825	2	Screw, Cap	10	<u>0502-409</u>	1	Spring, Brake Lever
4	0402-379	1	Wire Form, Cable	11	0423-027	1	Washer, Brake Lever
5	0487-010	1	Cable, Brake - Rear	12	0623-237	1	Ring, Snap
6	0502-056	1	Bracket, Brake Switch	13	0670-183	2	O-Ring
7	0423-165	1	Nut	14	0502-095	1	Lever, Brake

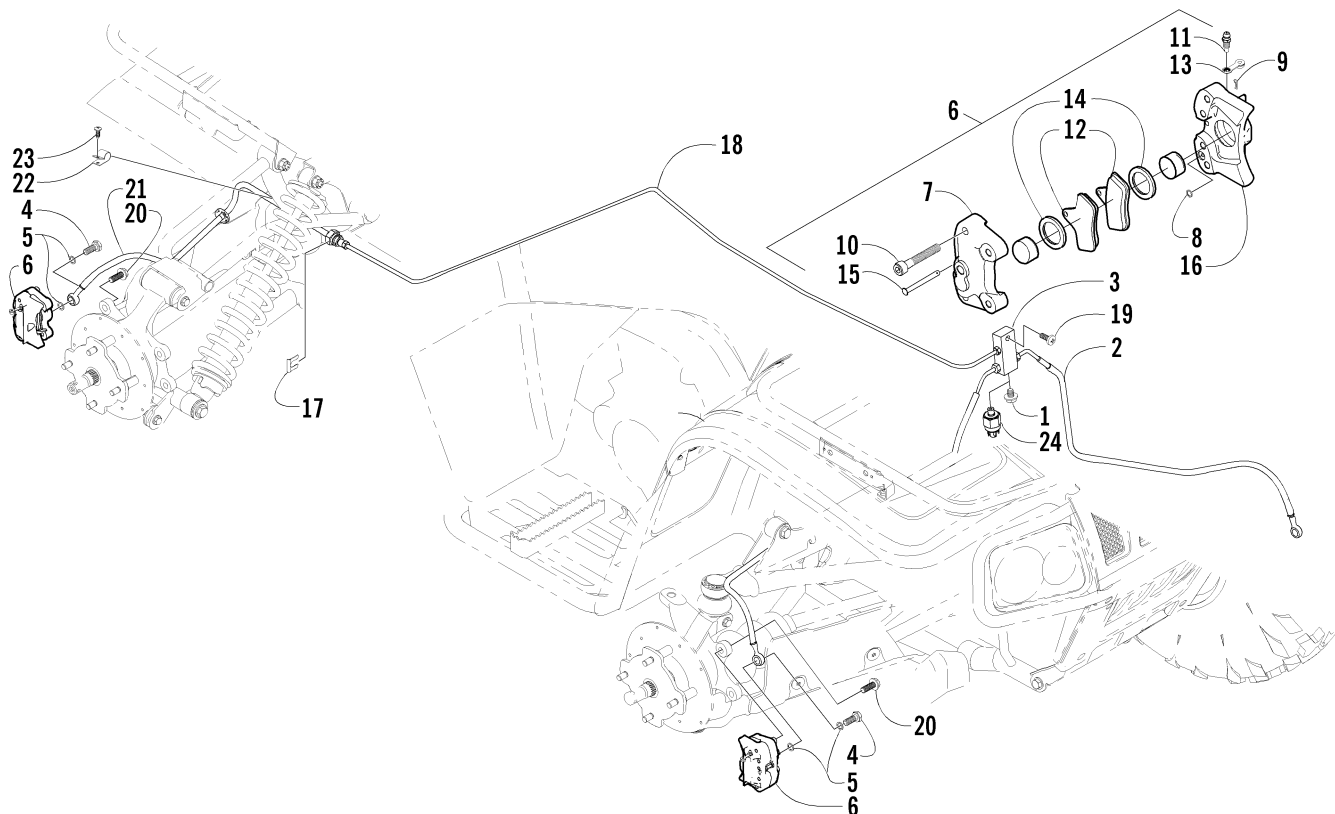


HYDRAULIC HAND BRAKE ASSEMBLY

(Master Cylinder Rebuild Kit p/n 0502-429)

0737-682 *Not a Service Part

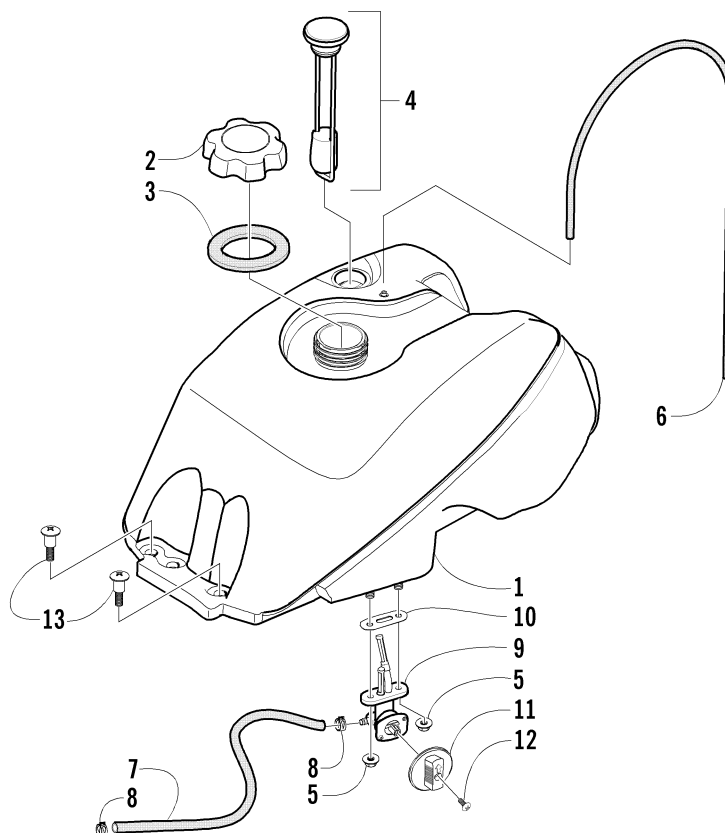
Ref.	Part No.	Qty.	Description	Ref.	Part No.	Qty.	Description
1	<u>0502-387</u>	1	Brake Assembly (inc. 2-18)	11	0623-613	2	● Screw, Machine
2	*	1	● Master Cylinder	12	8052-212	2	● Washer, Lock - Internal Tooth
3	0402-818	1	● Lever, Brake	13	0623-432	2	● Screw, Master Cylinder Mounting
4	0623-430	1	● Screw, Lever Mounting	14	0602-587	1	● O-Ring
5	0623-056	1	● Nut, Lock	15	0602-740	1	● Reservoir
6	<u>1402-034</u>	1	● Lock, Brake Lever	16	0602-741	1	● Gasket, Cover
7	0402-245	1	● Spring, Brake Lever Lock	17	0602-742	1	● Cover, Reservoir
8	0402-246	1	● Pin, Brake Lever Lock	18	0623-506	2	● Screw, Cover
9	0423-090	1	● Nut, Press-On - Brake Lever Lock	19	0402-962	1	Brakeline, Hydraulic
10	0602-907	1	● Clamp, Master Cylinder				



HYDRAULIC BRAKE ASSEMBLY

0737-751 *Not a Service Part

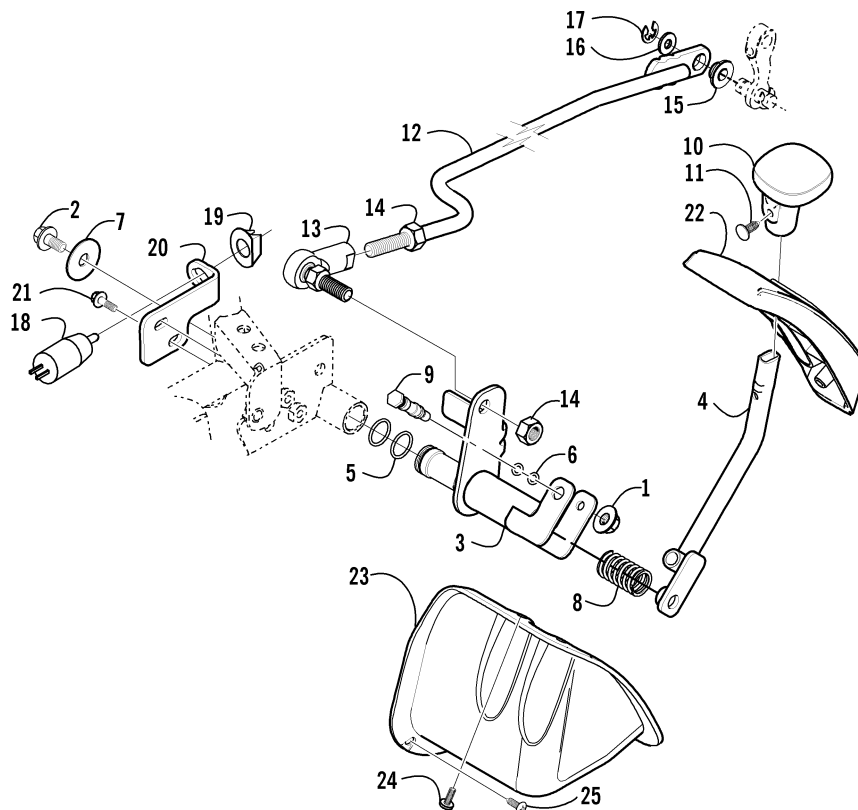
Ref.	Part No.	Qty.	Description	Ref.	Part No.	Qty.	Description
1	<u>1402-031</u>	1	Plug, Junction Block (2X4)	12	0402-882	6	● Pad, Brake
2	<u>0402-986</u>	2	Hose, Brake - Front	13	0402-491	3	● Valve, Bleed
3	<u>1402-005</u>	1	Block, Junction	14	0402-980	6	● O-Ring, Brake Caliper
4	0423-413	3	Bolt, Banjo Fitting	15	0402-495	3	● Pin, Brake Caliper
5	0423-178	6	Washer, Crush	16	*	1	● Housing, Caliper
6	0502-335	1	Caliper, Brake - Right Front (inc. 7-16)	17	0402-597	1	Clip, Brakeline
	0502-336	2	Caliper, Brake - Left Front and Right Rear (inc. 7-16)	18	<u>1402-018</u>	1	Tube, Brakeline - Rear
7	*	3	● Housing, Caliper	19	8476-625	1	Screw, Machine
8	0402-490	3	● O-Ring	20	8408-825	6	Screw, Cap
9	0402-496	3	● Pin, Cotter	21	<u>1402-020</u>	1	Hose, Brake - Rear
10	0402-492	12	● Screw, Socket Head	22	0423-415	1	Clamp, Cable
11	0402-493	3	● Cap, Bleed Valve	23	0423-324	1	Screw, Machine
				24	0402-306	1	Switch, Brake Pressure (4X4)



GAS TANK ASSEMBLY

0736-991

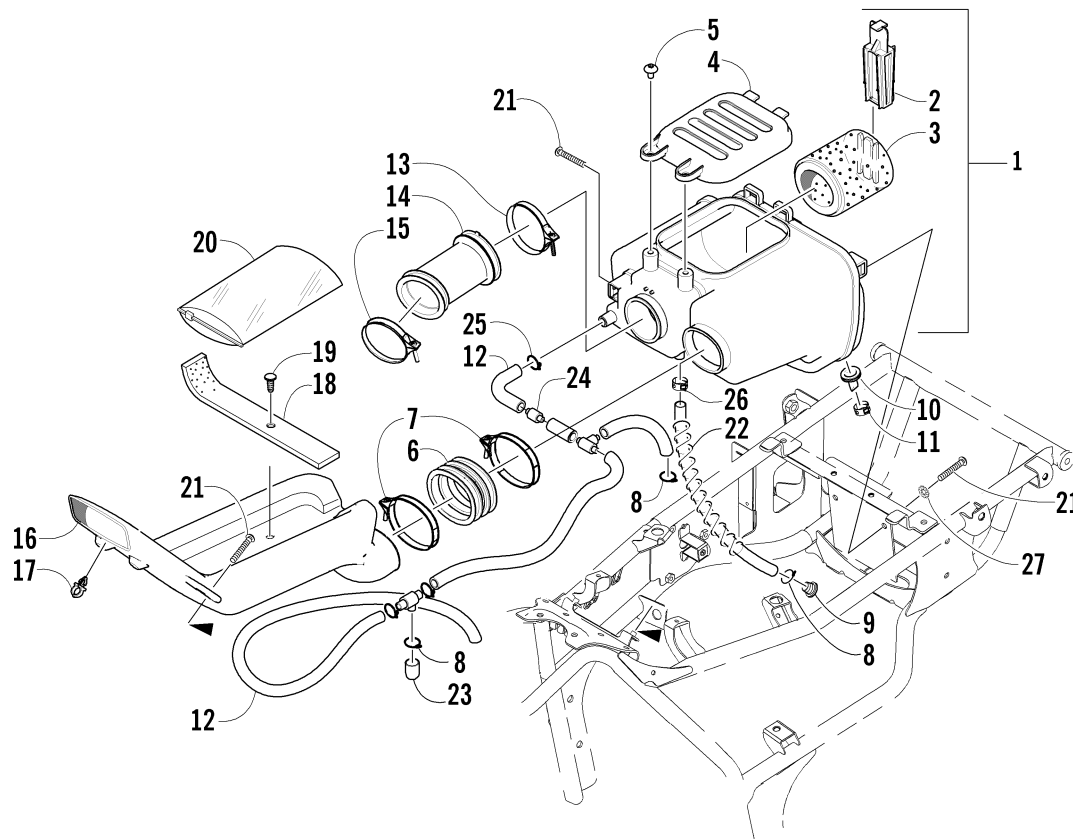
Ref.	Part No.	Qty.	Description	Ref.	Part No.	Qty.	Description
1	0570-068	1	Tank, Gas - Assembly (inc. 2-10)	8	0423-152	2	● Clamp, Hose - Spring
2	0470-438	1	● Cap, Gas Tank (inc. 3)	9	0470-445	1	● Valve, Fuel Shut-Off (inc. 10)
3	0109-733	1	● ● Seal, Gas Tank Cap	10	0470-364	1	● ● Gasket, Fuel Shut-Off Valve
4	0470-444	1	● Gauge, Fuel w/Gasket (Press-Fit)	11	0470-408	1	Knob, Fuel Shut-Off Valve
5	0423-398	2	● Nut, Lock	12	0423-146	1	Screw, Fuel Shut-Off Valve Knob
6	0470-416	1	● Hose, Vent	13	0423-130	2	Screw, Gas Tank
7	0610-007	AR	● Hose, Gasline - 25 ft				



REVERSE SHIFT LEVER ASSEMBLY

0736-908

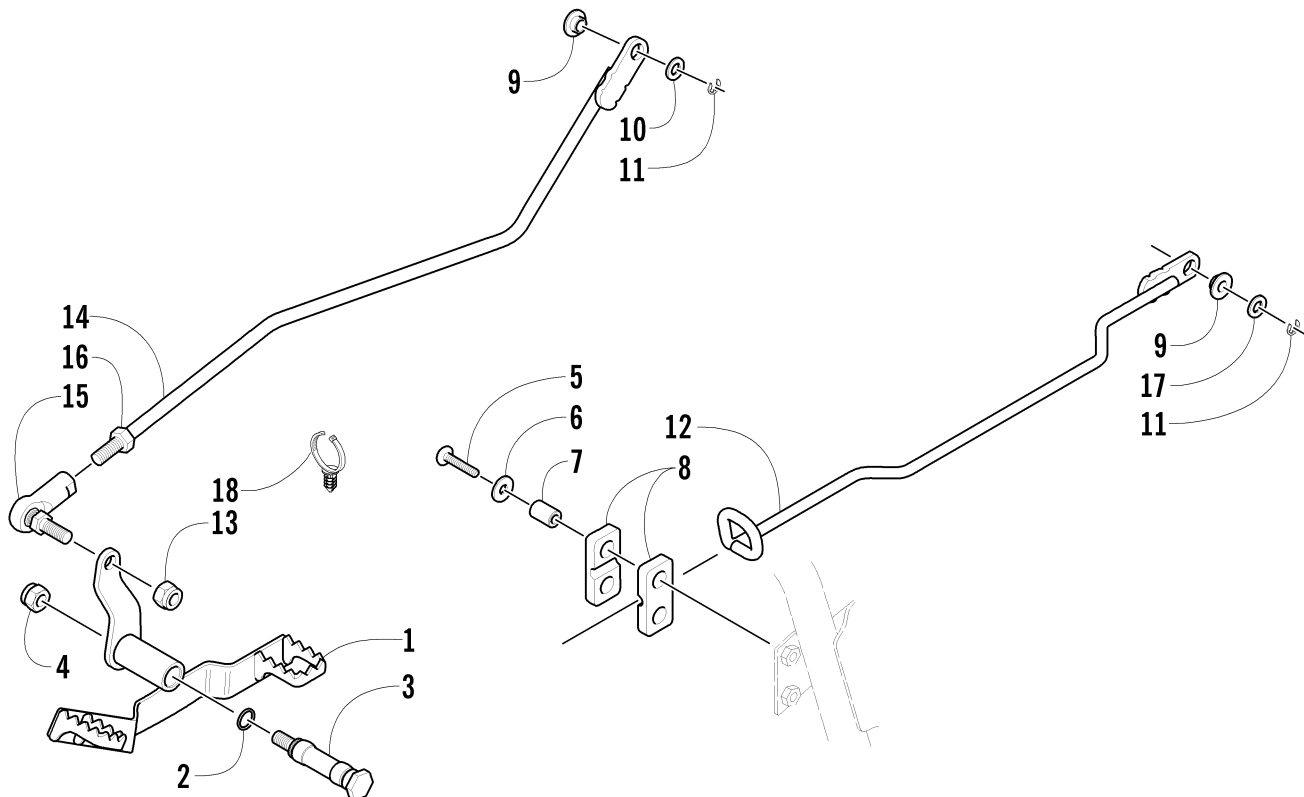
Ref.	Part No.	Qty.	Description	Ref.	Part No.	Qty.	Description
1	8424-602	1	Nut	14	0623-294	2	Nut
2	8408-812	1	Screw, Cap	15	0423-091	1	Bushing, Shift Linkage
3	0502-237	1	Axle, Reverse Shift Lever	16	8050-242	1	Washer
4	0502-185	1	Lever, Reverse Shift	17	3423-168	1	E-Ring
5	0423-299	2	O-Ring	18	0409-008	1	Switch, Reverse
6	0423-182	2	O-Ring	19	0402-168	1	Retainer, Reverse Switch
7	0423-087	1	Washer	20	<u>0506-961</u>	1	Bracket, Reverse Switch
8	<u>0502-410</u>	1	Spring, Reverse Shift Lever	21	8408-616	2	Screw, Cap
9	0402-675	1	Axle, Pivot	22	0402-847	1	Plate, Shift
10	0402-843	1	Handle, Reverse Shift Lever	23	0406-943	1	Shield, Linkage
11	0423-345	1	Clip, Push	24	0423-371	3	Screw, Machine
12	0502-250	1	Linkage, Shift	25	0623-309	1	Screw, Self-Tapping
13	0402-844	1	End, Rod				



AIR INTAKE ASSEMBLY

0736-899

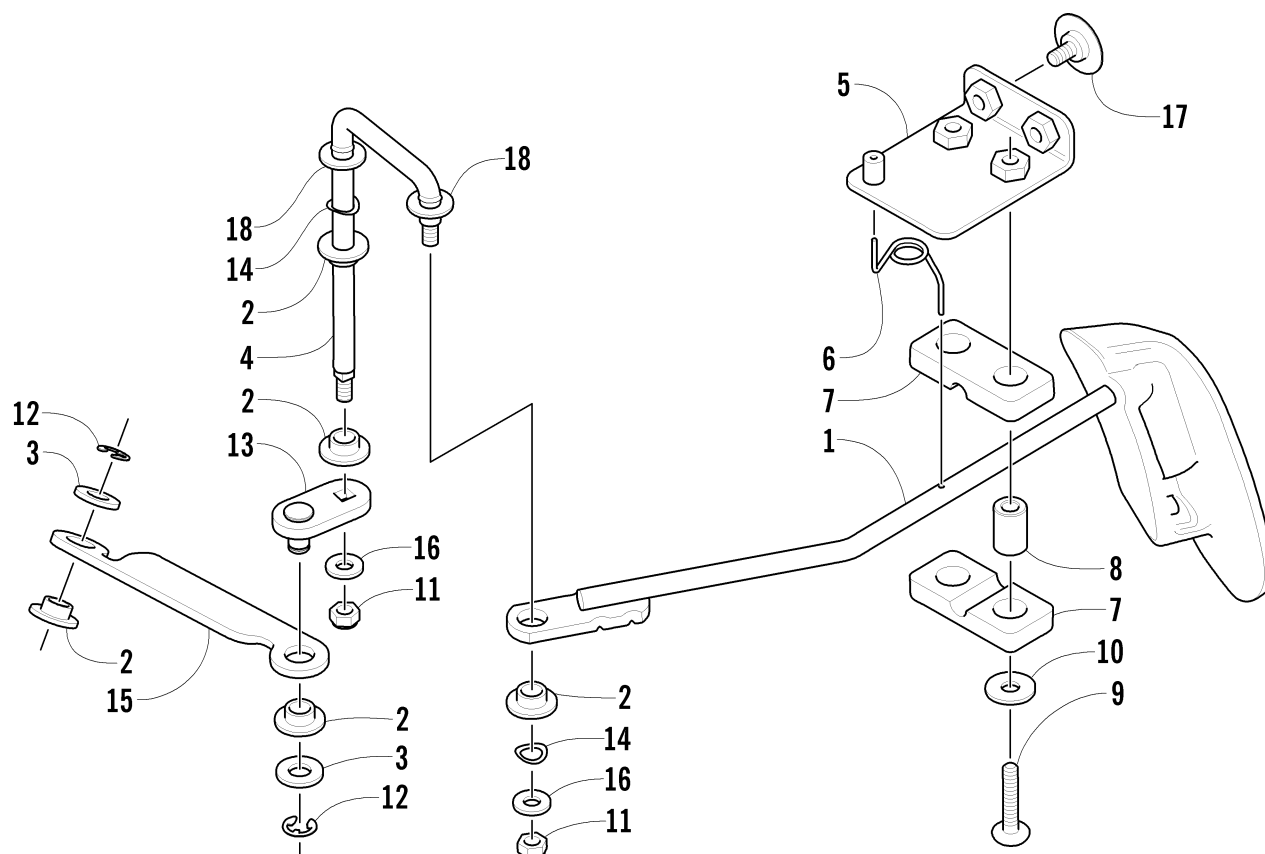
Ref.	Part No.	Qty.	Description	Ref.	Part No.	Qty.	Description
1	3570-001	1	Intake, Air - Assembly (inc. 2-7)	15	3402-235	1	Clamp
2	3402-330	1	● Slider, Retainer - Filter	16	0570-062	1	Snorkel, Air Intake - Assembly (inc. 17-19)
3	0470-421	1	● Filter, Air Cleaner	17	0623-101	1	● Clip, Routing
4	3402-331	1	● Cap	18	0406-379	1	● Strap, Tool Kit
5	8477-610	2	● Screw, Cap	19	0606-586	1	● Plug, Hole - Retaining Clip
6	3423-329	1	● Joint	20	0444-122	1	Kit, Tool
7	3423-311	2	● Clamp	21	8476-616	5	Screw, Cap
8	3423-313	5	Clip	22	0423-128	1	Spring, Vent Tube
9	0423-127	1	Plug, Drain	23	3402-334	1	Plug, Breather
10	0470-442	1	Valve, Air Cleaner	24	3470-002	1	Valve, Check
11	0423-071	1	Clamp	25	3423-424	1	Clip, Air Cleaner
12	3470-004	1	Tube, Crankcase Breather	26	0423-047	1	Clamp
13	3402-236	1	Clamp	27	8053-212	1	Washer, Lock - External Tooth
14	0470-347	1	Boot, Air Cleaner				



SHIFTER ASSEMBLY

0737-519

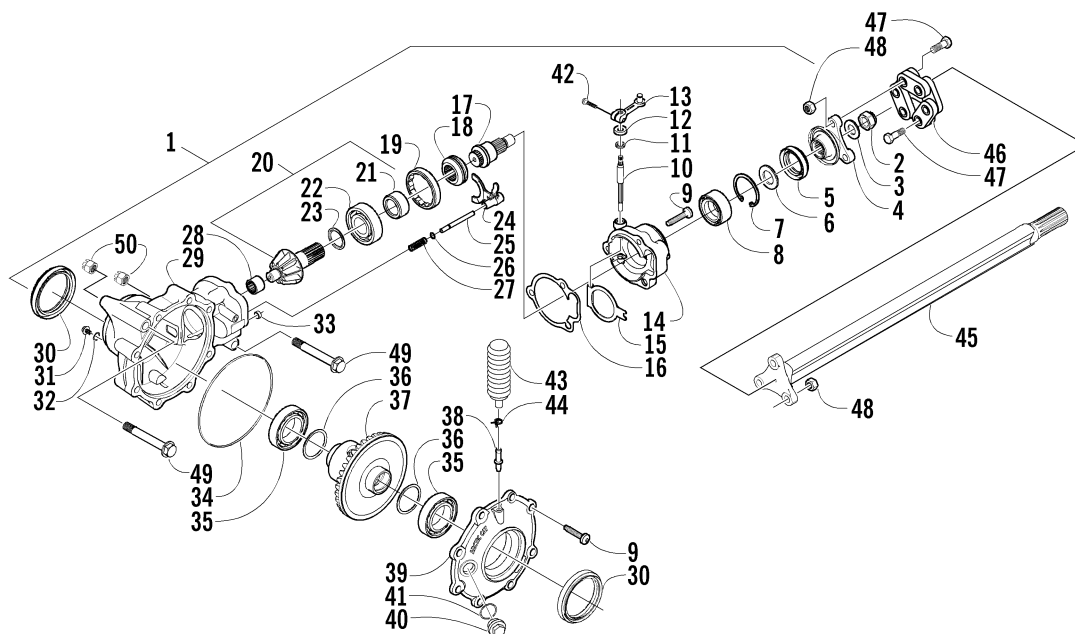
Ref.	Part No.	Qty.	Description	Ref.	Part No.	Qty.	Description
1	0502-253	1	Lever, Footshift	10	8050-242	1	Washer
2	0423-096	2	O-Ring	11	3423-168	2	E-Ring, Linkage
3	0402-370	1	Axle, Lever	12	0502-257	1	Linkage, High/Low Shift
4	8422-002	1	Nut	13	0623-025	1	Nut, Lock
5	8476-630	2	Screw, Cap	14	0502-256	1	Linkage, Footshift Lever (inc. 15-16)
6	8050-222	2	Washer	15	0402-844	1	● End, Rod
7	0402-256	2	Collar, High/Low Shift	16	0623-294	1	● Nut
8	0406-363	2	Bushing, High/Low Shift	17	8050-247	1	Washer
9	0423-091	2	Bushing, Linkage	18	0423-075	1	Cable Tie, Push-Mount



FRONT DRIVE SHIFT LINKAGE ASSEMBLY (4X4)

0736-906

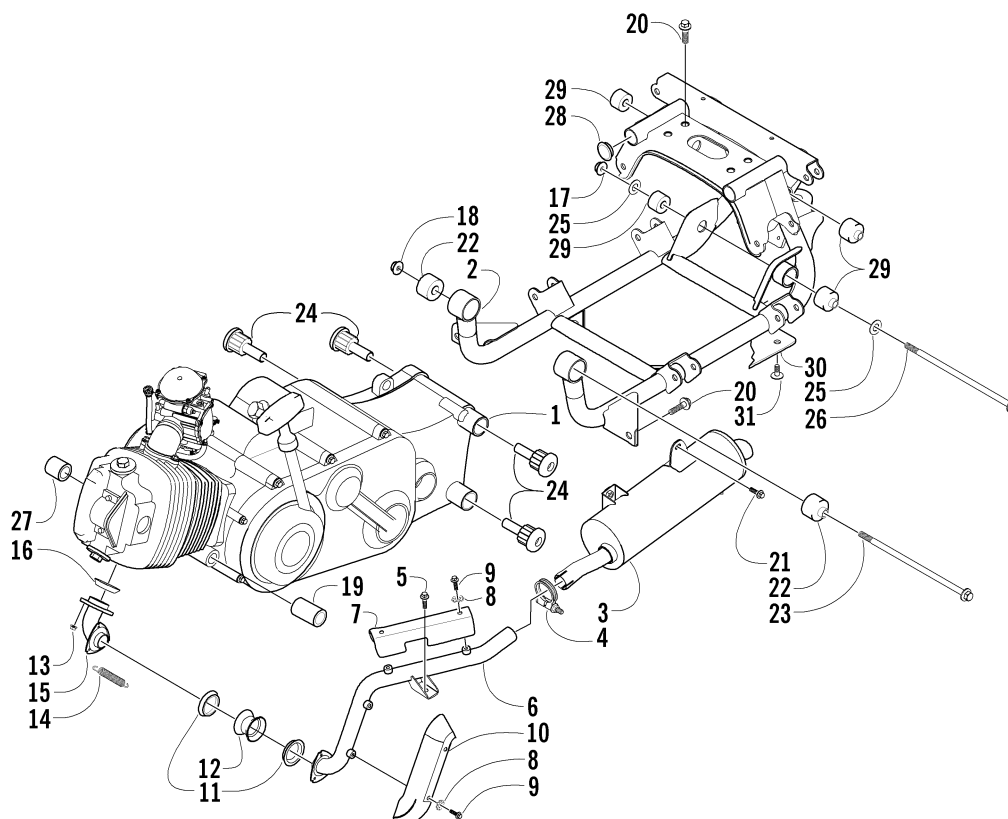
Ref.	Part No.	Qty.	Description	Ref.	Part No.	Qty.	Description
1	0502-291	1	Shifter	10	8050-222	2	Washer
2	0423-091	5	Bushing	11	0624-250	2	Nut, Lock
3	8050-247	2	Washer	12	0124-057	2	E-Ring
4	0402-821	1	Arm, Shifter	13	0502-295	1	Arm, Selector
5	0502-234	1	Plate, Mounting	14	0423-368	2	Washer, Wave
6	0402-828	1	Spring, Torsion	15	<u>0502-396</u>	1	Cross-Link
7	0406-363	2	Bushing	16	0423-348	2	Washer
8	0402-256	2	Collar	17	0423-101	2	Screw, Body
9	8476-630	2	Screw, Machine	18	0123-053	2	Washer



FRONT DRIVE GEARCASE ASSEMBLY (4X4)

0737-614

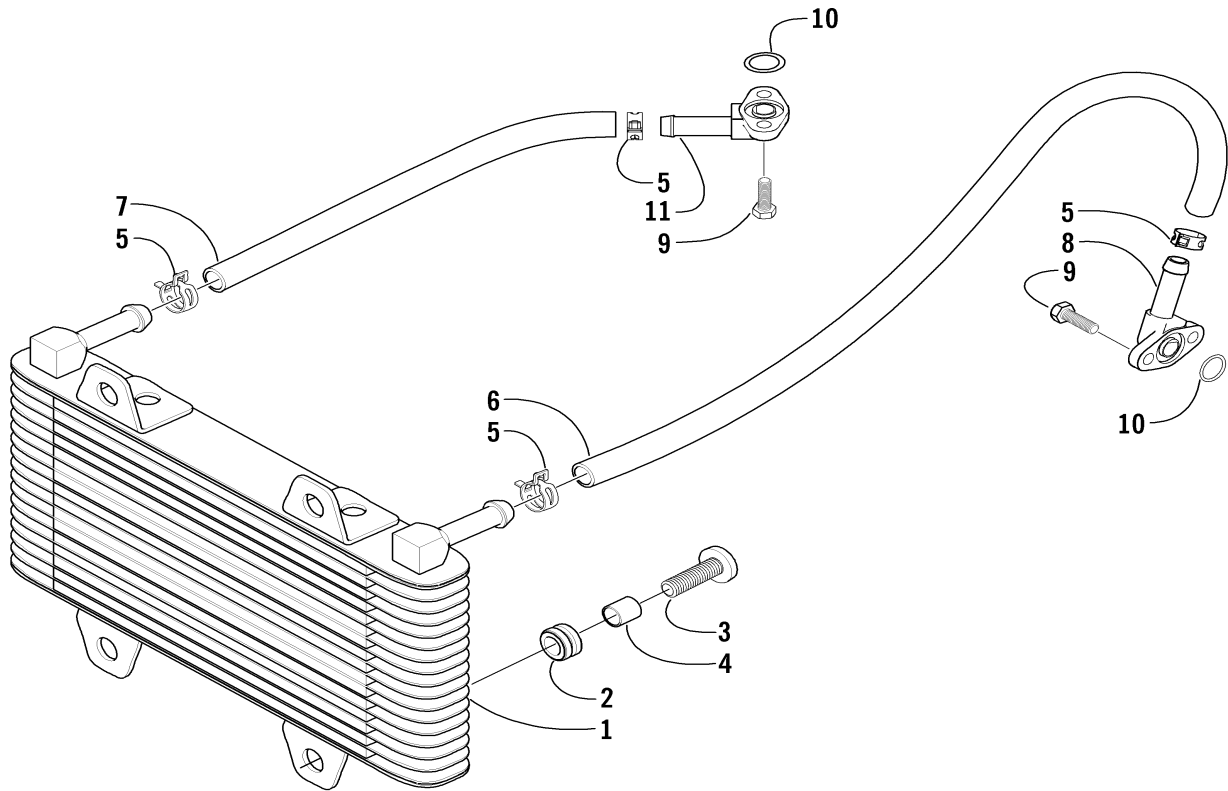
Ref.	Part No.	Qty.	Description	Ref.	Part No.	Qty.	Description
1	0502-153	1	Gearcase, Front Drive - Assembly (inc. 2-42)	25	0402-417	1	● Shaft, Shuttle
2	0423-135	1	● Nut	26	0423-147	1	● O-Ring
3	0423-134	1	● Washer	27	0402-418	1	● Spring, Return
4	0402-422	1	● Flange, Drive	28	0402-328	1	● Bearing
5	0402-395	1	● Seal	29	0502-120	1	● Housing, Gearcase
6	0402-346	1	● Spacer, Drive	30	0402-394	2	● Seal
7	0402-332	1	● Ring, Retaining	31	0402-450	1	● Plug, Magnetic (inc. 32)
8	0402-003	1	● Bearing	32	0423-153	1	● O-Ring
9	0423-118	11	● Screw, Self-Tapping	33	0402-411	1	● Pin, Dowel
10	0402-412	1	● Shaft, Selector	34	0423-149	1	● O-Ring
11	0402-416	1	● Seal	35	0402-393	2	● Bearing
12	0402-398	1	● Plate, Selector Shaft	36	0402-405	AR	● Shim
13	0502-092	1	● Arm, Selector		0402-406	AR	● Shim
14	0502-122	1	● Housing, Selector		0402-407	AR	● Shim
15	0402-414	1	● Plate, Spring - Selector		0402-408	AR	● Shim
16	0402-947	1	● Gasket, Flange		0402-409	AR	● Shim
17	0402-410	1	● Shaft, Thrust	37	0502-199	1	● Gear, Ring - 34T
18	0402-413	1	● Coupler, Drive	38	0402-871	1	● Fitting
19	0402-357	1	● Collar, Lock	39	0502-121	1	● Cover, Gearcase
20	0502-155	1	● Gear, Pinion - Assembly - 11T (inc. 21-23)	40	0402-333	1	● Plug, Fill (inc. 41)
21	0402-336	1	● Collar, Retaining	41	0423-154	1	● O-Ring
22	0402-327	1	● Bearing	42	8410-620	1	● Screw, Cap
23	0402-424	AR	● Shim	43	0402-147	1	Bladder, Gearcase
	0402-425	AR	● Shim	44	0423-315	1	Clamp, Fitting
	0402-426	AR	● Shim	45	0502-201	1	Shaft, Propeller
	0402-427	AR	● Shim	46	3435-007	1	Coupler, Propeller Shaft
	0402-428	AR	● Shim	47	3423-182	6	Screw, Cap
24	0402-420	1	● Fork, Selector	48	3004-491	6	Nut
				49	3423-010	2	Screw, Cap
				50	8428-002	2	Nut, Lock



ENGINE AND RELATED PARTS

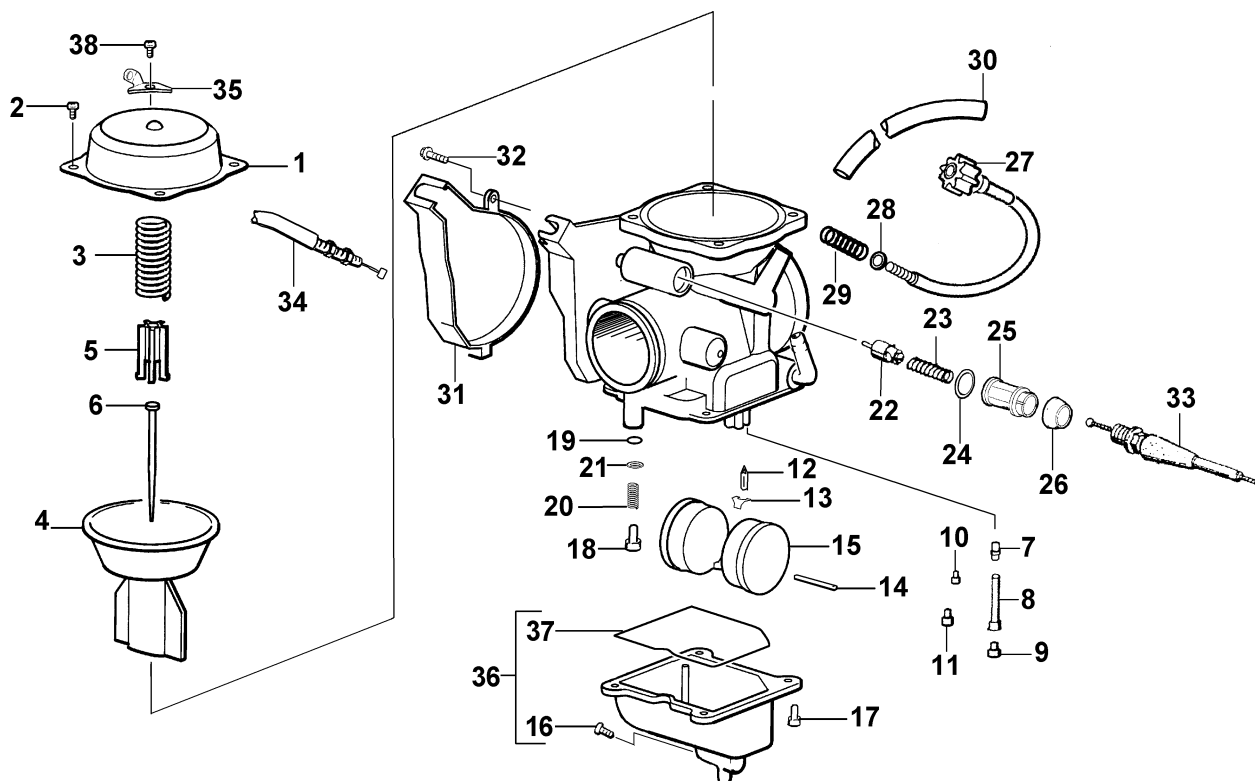
0737-750

Ref.	Part No.	Qty.	Description	Ref.	Part No.	Qty.	Description
1	0462-005	1	Engine	16	3402-300	1	Seal, Exhaust Pipe
	0462-009	1	Engine (4X4)	17	8432-002	2	Nut
2	0506-189	1	Sub-Frame	18	8422-202	1	Nut
3	0512-011	1	Muffler	19	0402-231	1	Spacer, Engine Mount - Long
4	0423-092	1	Clamp, Exhaust	20	8409-020	6	Screw, Cap
5	8408-812	3	Screw, Cap	21	8408-816	1	Screw, Cap
6	0512-014	1	Pipe, Exhaust	22	3402-264	2	Mount, Engine
7	0412-024	1	Cover, Exhaust - Rear	23	3423-236	1	Screw, Cap
8	8053-211	4	Washer, Lock - External Tooth	24	3402-263	4	Mount, Engine
9	8477-610	4	Screw, Cap	25	8050-272	4	Washer
10	0412-023	1	Cover, Exhaust	26	3423-221	2	Screw, Cap
11	0612-887	2	Gasket, Exhaust	27	0402-232	1	Spacer, Engine Mount - Short
12	0512-077	1	Coupler, Exhaust	28	0406-320	2	Cap, Sub-Frame
13	8424-802	2	Nut	29	3402-232	4	Mount, Engine
14	0123-321	3	Spring, Extension	30	0406-787	1	Panel, Belly - Sub-Frame (4X4)
15	0512-008	1	Pipe, Header	31	0423-101	4	Screw, Body (4X4)



OIL COOLER ASSEMBLY

Ref.	Part No.	Qty.	Description	Ref.	Part No.	Qty.	Description
1	0413-011	1	Cooler, Oil	7	0410-006	1	Hose, Oil - Output
2	0423-086	4	Grommet	8	0410-013	1	Fitting, Oil
3	8476-620	4	Screw, Cap	9	8471-616	4	Screw, Cap
4	0423-036	4	Collar	10	0423-089	2	O-Ring, Oil Fitting
5	0423-098	4	Clamp, Hose	11	0410-012	1	Fitting, Oil - Angled
6	0410-007	1	Hose, Oil - Input				



CARBURETOR

(Complete Assembly p/n 0470-448)

0735-876 *Not a Service Part **Optional

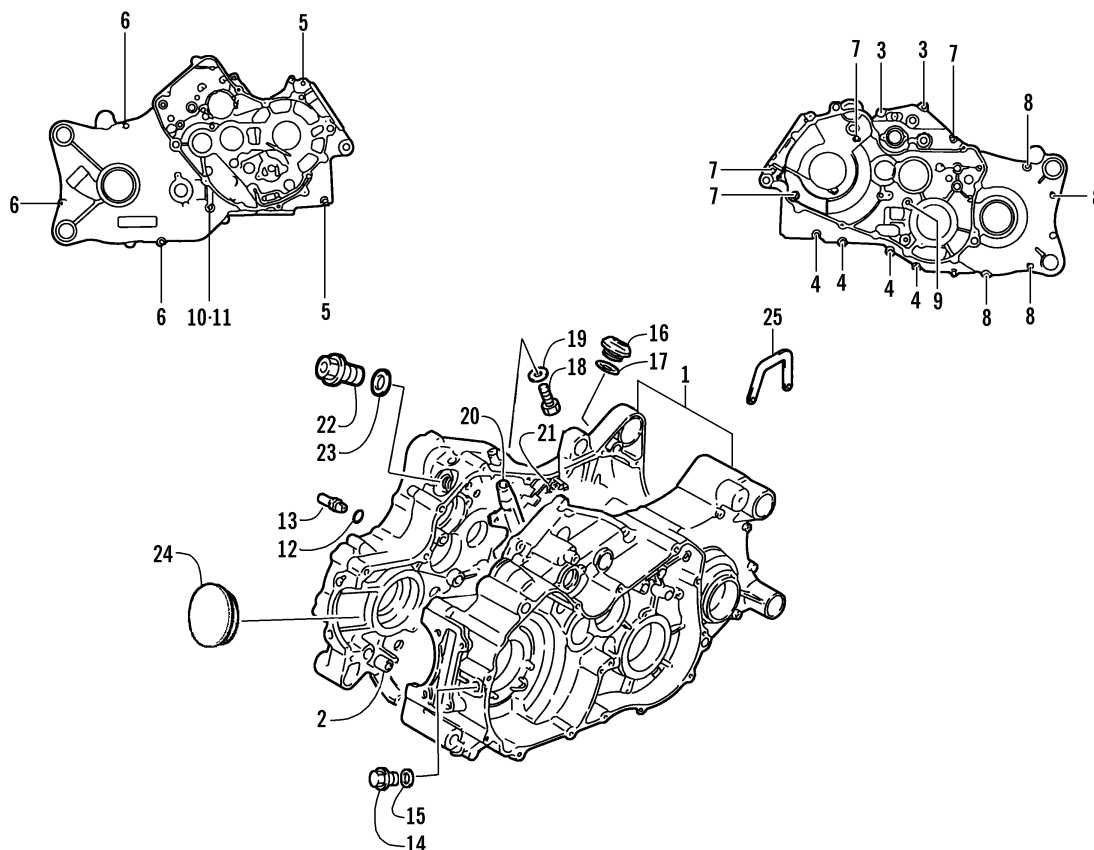
Ref.	Part No.	Qty.	Description	Ref.	Part No.	Qty.	Description
1	5507-001	1	Cover, Top	18	5507-040	1	Screw, Pilot Air - Set (inc. 19-21)
2	5507-002	3	Screw, Top Cover	19	*	1	● O-Ring
3	5507-052	1	Spring	20	*	1	● Spring
4	5507-053	1	Piston, Vacuum	21	*	1	● Washer
5	5507-054	1	Spring, Seat	22	5507-022	1	Valve, Starter
6	5507-055	1	Jet Needle	23	5507-023	1	Spring
7	5507-056	1	Needle Jet	24	5507-024	1	O-Ring
8	5507-047	1	Holder, Needle Jet	25	5507-025	1	Cap
9	5507-057	1	Main Jet - 135	26	5507-026	1	Cap, Rubber
	5507-088	1	Main Jet - 138**	27	5507-059	1	Screw, Idle Adjust (inc. 35)
	5507-041	1	Main Jet - 147**	28	5507-028	1	Washer
	5507-042	1	Main Jet - 145**	29	5507-029	1	Spring
	5507-043	1	Main Jet - 142**	30	5507-083	1	Tube, Vinyl
	5507-044	1	Main Jet - 140**	31	5507-036	1	Cover
	5507-009	1	Main Jet - 150**	32	5507-037	1	Screw
10	5507-010	1	Slow Jet	33	0487-017	1	Cable, Choke
11	5507-058	1	Starter Jet - 65	34	0487-019	1	Cable, Throttle
12	5507-038	1	Valve, Float - Set (inc. 13)	35	*	1	Bracket, Idle Adjust Screw
13	*	1	● Clip	36	5507-064	1	Chamber, Float - Assembly (inc. 16 and 37)
14	*	1	Pin, Float	37	5507-068	1	● O-Ring, Float Chamber
15	5507-039	1	Float Set (inc. 14)	38	5507-035	1	Screw
16	5507-050	1	Plug, Drain				
17	5507-017	4	Screw				

(Gasket Set p/n 3402-260)

0737-836

23

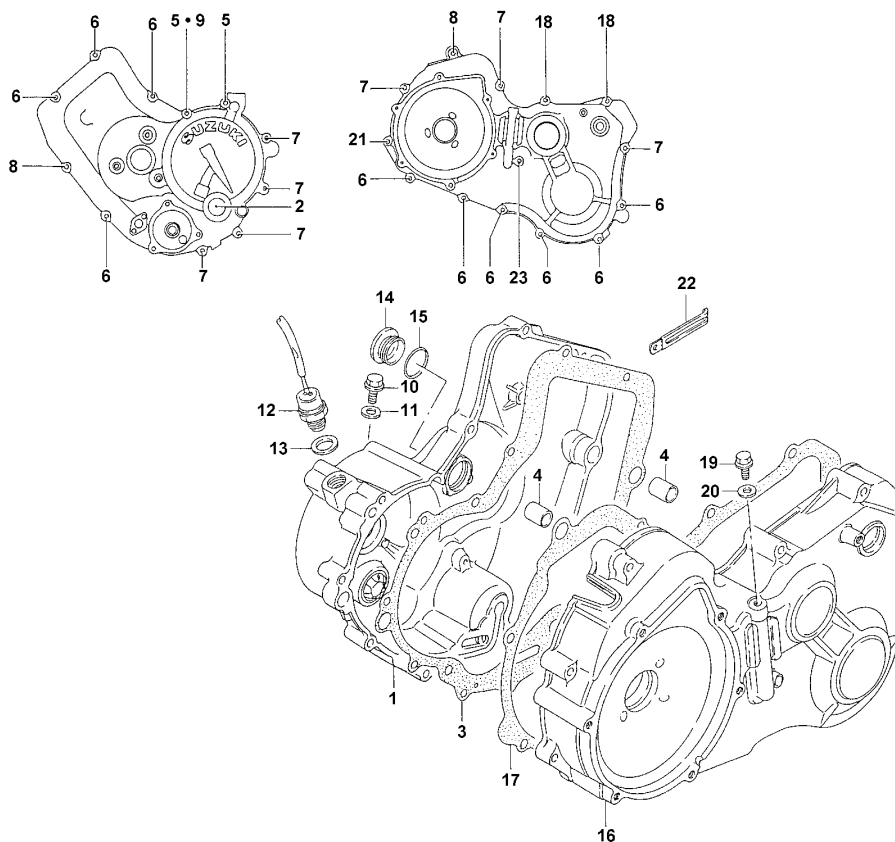
24



CRANKCASE ASSEMBLY

0737-838

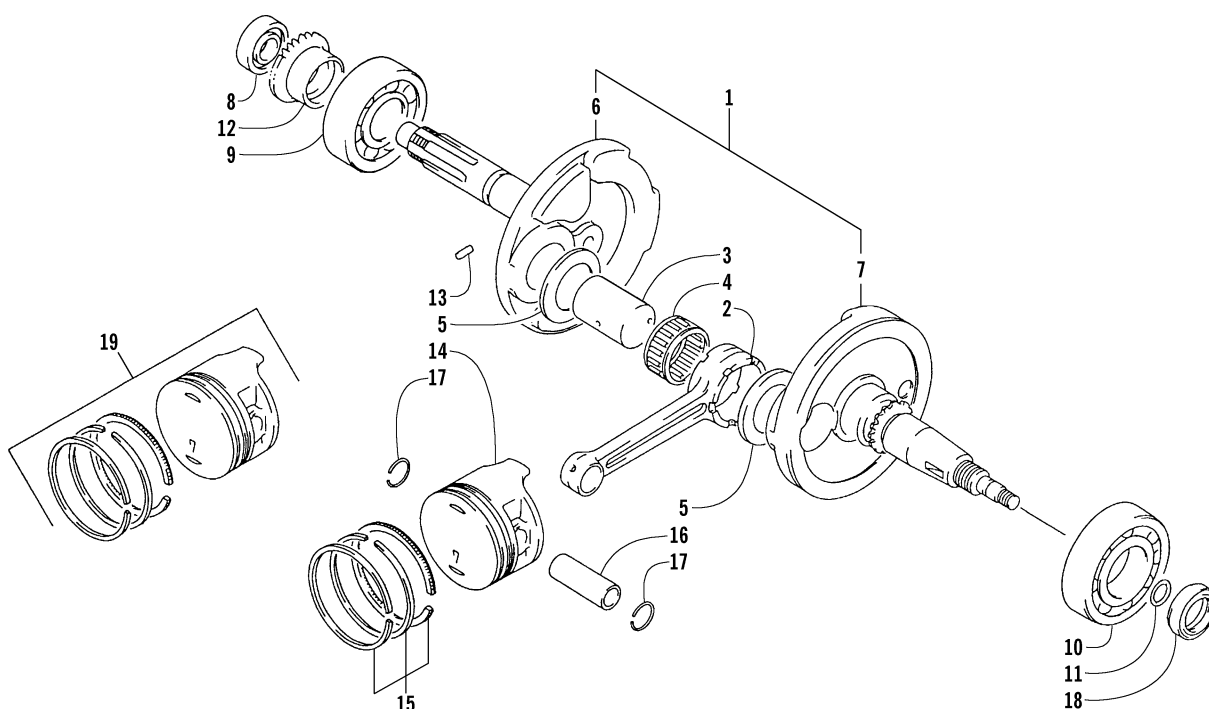
Ref.	Part No.	Qty.	Description	Ref.	Part No.	Qty.	Description
1	<u>3402-697</u>	1	Crankcase Set (inc. 2-13)	14	3402-214	1	Plug
2	3423-088	2	● Pin, Dowel	15	3402-012	1	Gasket
3	3423-162	2	● Screw, Cap	16	3402-212	1	Cap, Oil Filler
4	3423-098	4	● Screw, Cap	17	3423-274	1	O-Ring
5	3423-091	2	● Screw, Cap	18	3402-404	1	Plug, Oil Drain
6	3423-307	3	● Screw, Cap	19	3402-011	1	Gasket
7	3423-308	4	● Screw, Cap	20	3402-530	1	Pipe, Breather
8	3423-094	4	● Screw, Cap	21	3402-250	1	Separator, Oil Breather
9	3423-232	1	● Screw, Cap	22	3402-258	1	Plug, Reverse Switch Hole
10	3423-234	1	● Screw, Cap	23	3423-271	1	O-Ring
11	3005-243	1	● Gasket	24	3423-208	1	Plug, Crankcase (2X4)
12	3423-051	1	● O-Ring, Oil Gallery Jet	25	<u>3402-796</u>	1	Bracket, Engine Hanger
13	3402-245	1	● Jet, Oil Gallery				



CRANKCASE COVER ASSEMBLY

0737-841

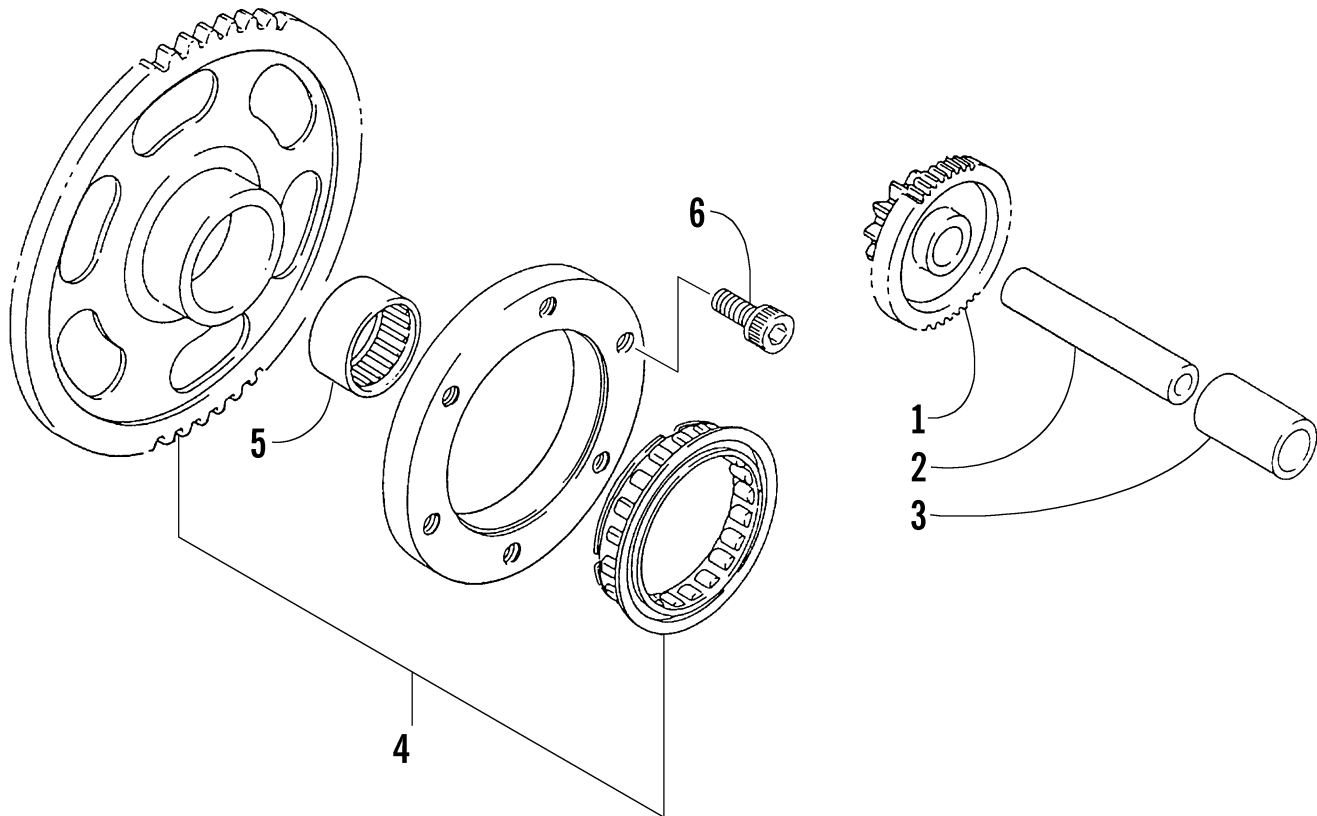
Ref.	Part No.	Qty.	Description	Ref.	Part No.	Qty.	Description
1	3402-254	1	Cover, Clutch (inc. 2)	13	3402-013	1	Gasket
2	3402-112	1	● Lens, Oil Inspection	14	3402-215	1	Cap, Clutch Adjust
3	3402-280	1	Gasket	15	3423-274	1	O-Ring
4	3423-088	4	Pin, Dowel	16	3402-256	1	Cover, Transfer
5	3423-231	2	Bolt	17	3402-262	1	Gasket, Transfer Cover
6	0693-327	10	Bolt	18	3423-091	2	Screw, Cap
7	3423-098	7	Bolt	19	3004-339	1	Plug, Oil Gallery
8	3423-307	2	Bolt	20	3003-290	1	Gasket
9	3402-444	1	Gasket	21	3004-756	1	Screw, Cap
10	3004-705	2	Plug, Oil Gallery	22	3402-237	2	Clamp, Breather Hose
11	3005-242	2	Gasket	23	3423-308	1	Screw, Cap
12	3430-019	1	Switch, Oil Sensor				



CRANKSHAFT ASSEMBLY

0733-747

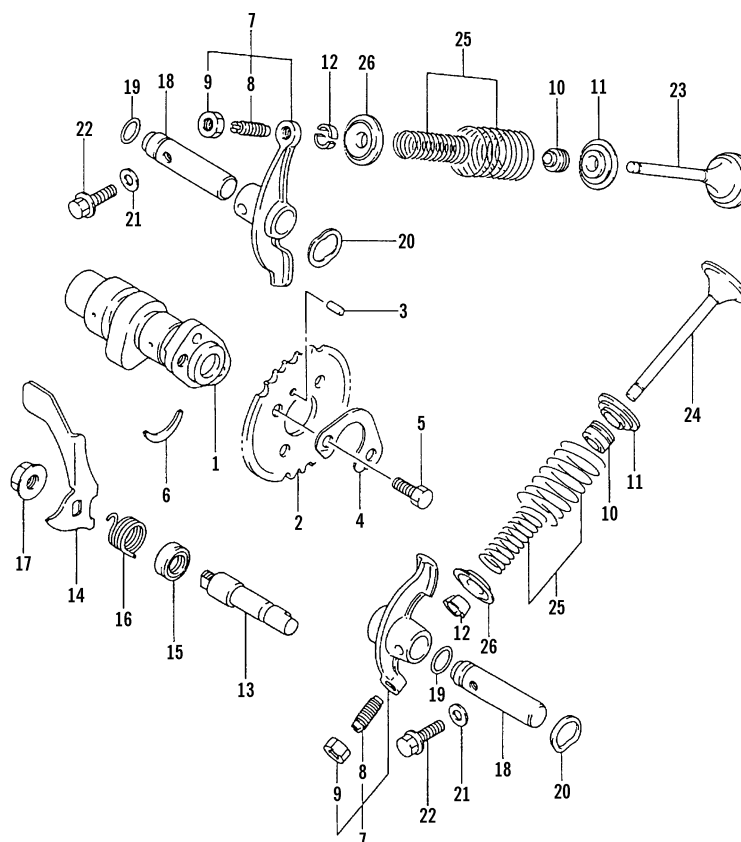
Ref.	Part No.	Qty.	Description	Ref.	Part No.	Qty.	Description
1	3402-269	1	Crankshaft Assembly (inc. 2-7)	12	3402-301	1	Gear, Oil Pump Drive
2	3402-268	1	● Rod, Connecting	13	3423-114	1	Pin
3	3402-270	1	● Pin, Crank	14	3402-265	1	Piston
4	3402-223	1	● Bearing	15	3402-266	1	Ring, Piston - Set
5	3005-241	2	● Washer		3436-011	1	Ring, Piston - Set (Oversized 0.50 mm)
6	<u>3402-792</u>	1	● Crankshaft - Right		3436-012	1	Ring, Piston - Set (Oversized 1.00 mm)
7	<u>3402-703</u>	1	● Crankshaft - Left	16	3402-267	1	Pin, Piston
8	3402-216	1	Bearing - Right	17	3423-280	2	Circlip
9	3402-221	1	Bearing - Middle	18	3402-227	1	Seal, Oil
10	3402-180	1	Bearing - Left	19	3402-306	1	Piston Set (Oversized 0.50 mm)
11	3423-053	1	O-Ring		3402-307	1	Piston Set (Oversized 1.00 mm)



STARTER CLUTCH ASSEMBLY

0733-748

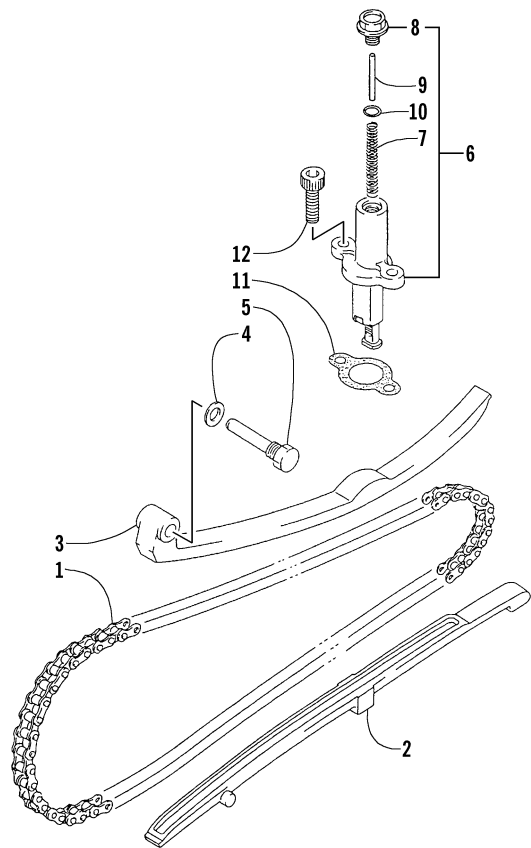
Ref.	Part No.	Qty.	Description	Ref.	Part No.	Qty.	Description
1	3402-274	1	Gear, Starter Idler	4	3402-273	1	Clutch Set, Starter (inc. 5)
2	3423-267	1	Pin	5	3402-222	1	● Bearing
3	3402-145	1	Spacer	6	3423-309	3	Screw, Cap



CAMSHAFT/VALVE ASSEMBLY

0733-749

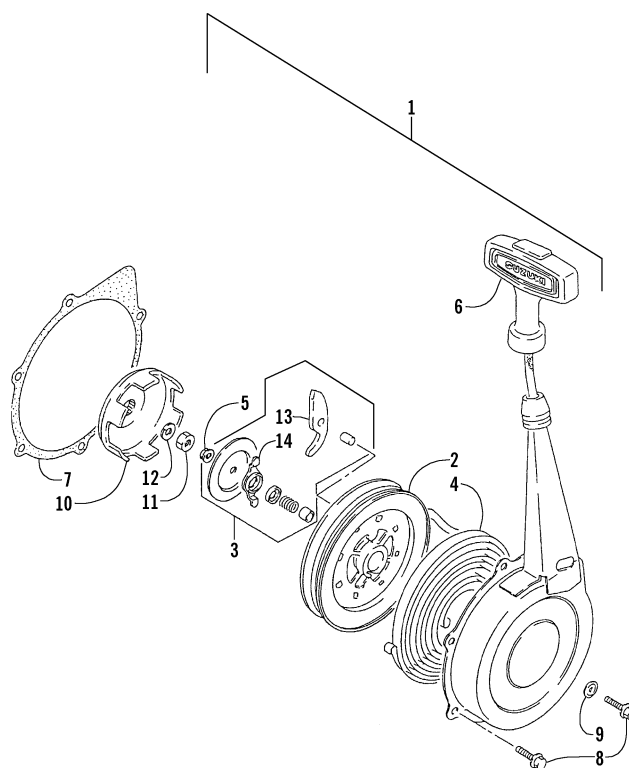
Ref.	Part No.	Qty.	Description	Ref.	Part No.	Qty.	Description
1	3402-275	1	Camshaft	14	3402-296	1	Lever, Decompression
2	3402-545	1	Sprocket	15	3402-225	1	Seal, Oil
3	3423-047	1	Pin	16	3402-242	1	Spring
4	3423-284	1	Washer	17	3004-326	1	Nut
5	3423-013	2	Screw	18	3402-289	2	Shaft, Rocker Arm
6	3423-071	1	C-Ring	19	3423-052	2	O-Ring
7	3402-288	2	Arm, Valve Rocker (inc. 8-9)	20	3423-259	2	Washer
8	3423-287	2	● Screw, Cap	21	3003-290	2	Gasket
9	3423-288	2	● Nut	22	0693-416	2	Screw, Cap
10	3402-226	2	Seal, Oil	23	3402-290	1	Valve, Intake
11	3402-294	2	Seat, Valve Spring	24	3402-291	1	Valve, Exhaust
12	0693-281	4	Cotter, Valve	25	3402-292	2	Spring, Valve - Set
13	3402-295	1	Shaft, Decompression Lever	26	3402-293	2	Retainer, Spring



CAM CHAIN ASSEMBLY

0733-750

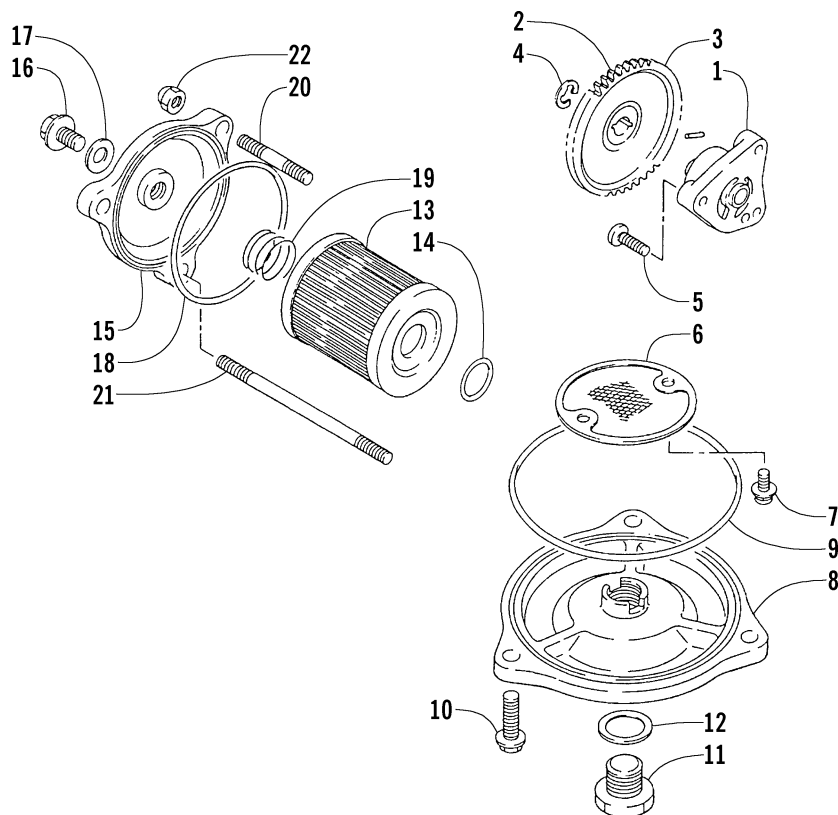
Ref.	Part No.	Qty.	Description	Ref.	Part No.	Qty.	Description
1	3402-281	1	Chain, Camshaft	7	3402-284	1	● Spring
2	3402-277	1	Guide, Camshaft Chain	8	3402-285	1	● Plug
3	3402-282	1	Tensioner, Camshaft Chain	9	3402-286	1	● Bar
4	3423-074	1	Screw, Cap	10	3423-286	1	● O-Ring
5	3003-188	1	Washer	11	3402-287	1	Gasket, Adjuster
6	3402-283	1	Adjuster, Tensioner - Assembly (inc. 7-10)	12	3004-576	2	Screw, Cap



RECOIL STARTER ASSEMBLY

0736-194

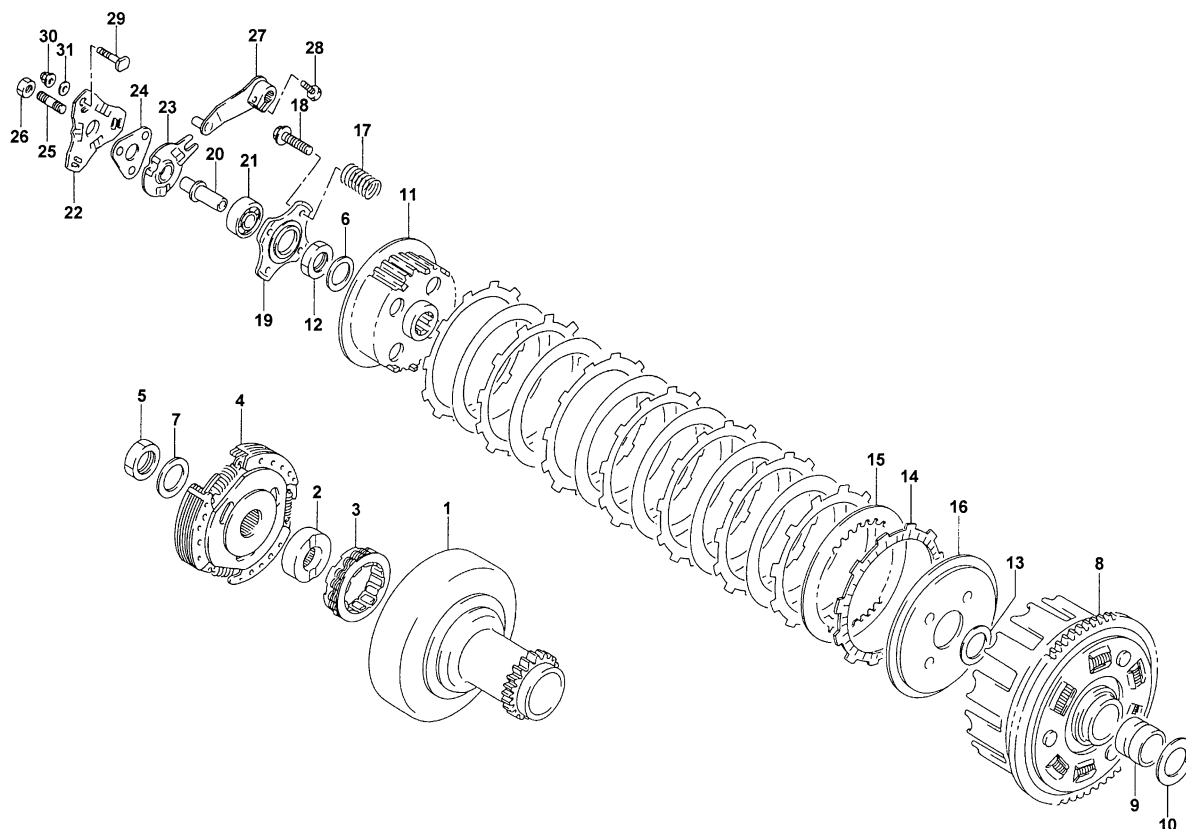
Ref.	Part No.	Qty.	Description	Ref.	Part No.	Qty.	Description
1	3445-018	1	Starter, Recoil - Assembly (inc. 2-6 and 13-14)	8	3423-428	6	Screw, Cap
2	3445-019	1	● Reel	9	3003-290	1	Gasket
3	3445-016	1	● Ratchet - Assembly (inc. 13-14)	10	3445-022	1	Cup, Starter
4	3445-007	1	● Spring, Spiral	11	3004-336	1	Nut
5	3004-488	1	● Nut	12	3004-362	1	Washer, Lock
6	3445-020	1	● Rope Assembly	13	3445-005	1	Ratchet
7	3445-028	1	Gasket, Recoil Starter	14	3445-006	1	Guide, Ratchet



OIL PUMP ASSEMBLY

0733-752

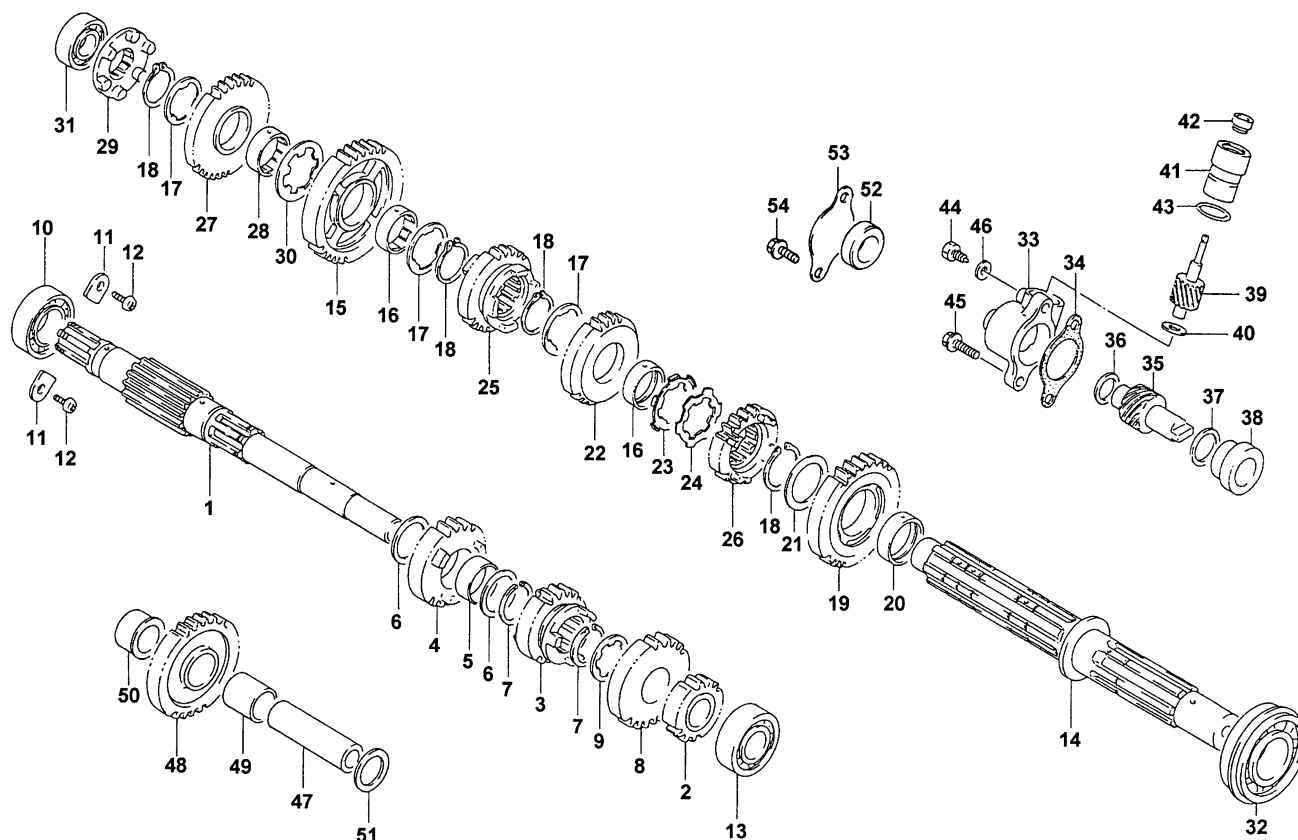
Ref.	Part No.	Qty.	Description	Ref.	Part No.	Qty.	Description
1	3445-017	1	Pump, Oil	12	3402-012	1	Gasket
2	3402-302	1	Gear, Driven	13	3436-005	1	Filter, Oil
3	3423-285	1	Pin	14	3423-270	1	O-Ring
4	3423-168	1	Circlip	15	3402-303	1	Cap, Oil Filter
5	3004-402	3	Screw, Cap	16	3004-705	1	Plug, Oil Check
6	3402-304	1	Strainer, Oil	17	3402-444	1	Gasket
7	0693-389	2	Screw, Cap	18	3423-277	1	O-Ring
8	3402-305	1	Cap, Oil Strainer	19	3402-238	1	Spring
9	3423-278	1	O-Ring	20	3423-314	2	Bolt, Stud
10	3004-507	3	Screw, Cap	21	3004-543	1	Bolt, Stud
11	3402-037	1	Plug, Drain	22	3423-315	3	Nut



CLUTCH ASSEMBLY

0733-753

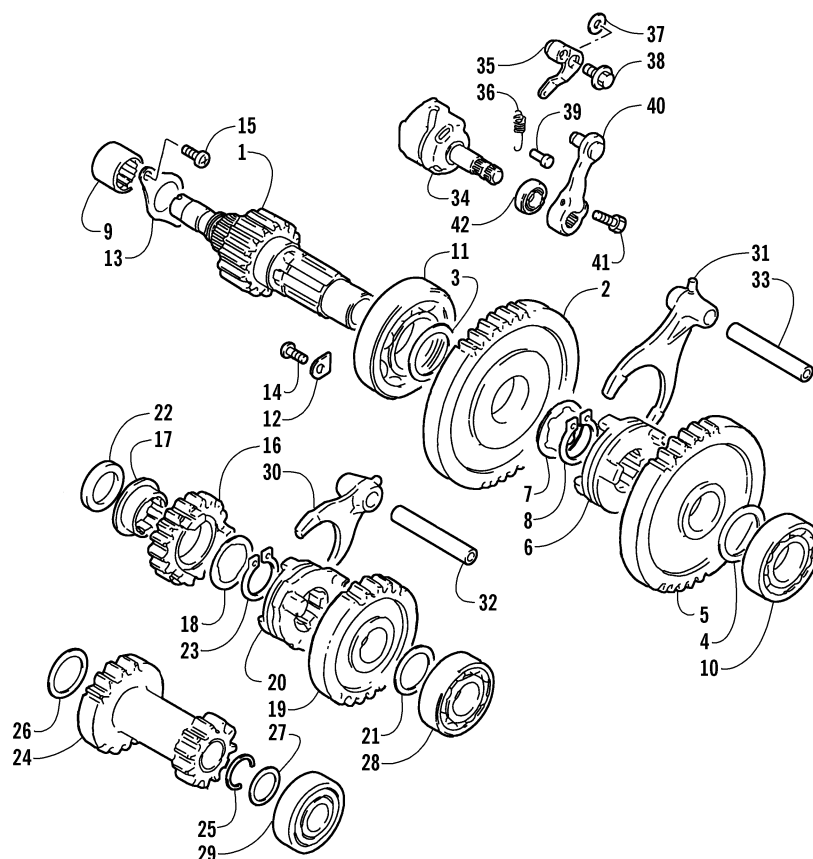
Ref.	Part No.	Qty.	Description	Ref.	Part No.	Qty.	Description
1	3446-253	1	Gear, Primary Drive	17	3402-239	4	Spring
2	3446-129	1	Race, Inner	18	3004-341	4	Screw, Cap
3	3446-122	1	Clutch, One Way	19	3446-127	1	Plate, Release
4	3446-128	1	Clutch Assembly	20	3446-130	1	Rod, Push
5	3423-253	1	Nut	21	3402-043	1	Bearing
6	3423-032	1	Washer, Lock	22	3446-133	1	Guide, Ball - Outer
7	3423-260	1	Washer, Lock	23	3446-131	1	Guide, Ball - Inner
8	3446-121	1	Gear, Primary - Assembly	24	3446-134	1	Ball, Release
9	3402-206	1	Spacer	25	3423-248	1	Screw, Adjuster
10	3402-211	1	Washer	26	3423-022	1	Nut, Adjuster
11	3446-123	1	Hub, Clutch	27	3446-132	1	Arm, Release
12	3423-254	1	Nut	28	3423-125	1	Screw, Cap
13	3423-316	1	Washer	29	3423-245	3	Screw, Cap
14	3446-124	8	Plate, Drive	30	0693-316	3	Nut
15	3446-125	7	Plate, Driven	31	3003-290	3	Seal, Cap Screw
16	3446-126	1	Plate, Clutch Pressure				



TRANSMISSION ASSEMBLY

0737-842

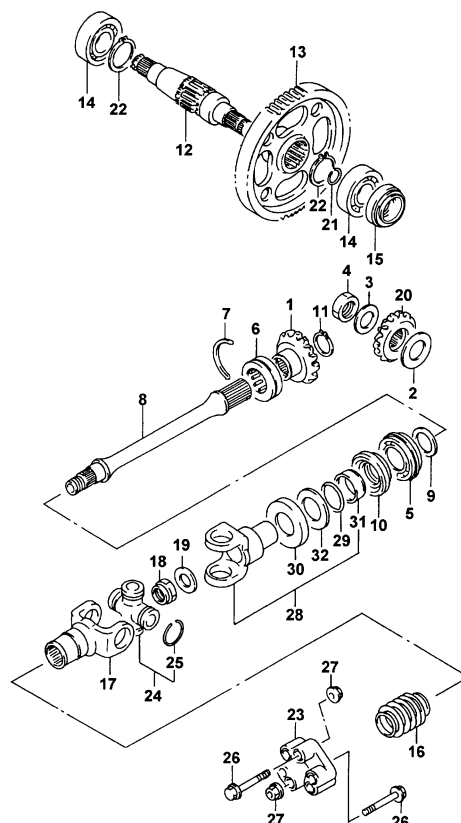
Ref.	Part No.	Qty.	Description	Ref.	Part No.	Qty.	Description
1	3446-277	1	Countershaft	28	3446-145	1	Bushing
2	3446-137	1	Gear, 2nd Drive	29	3446-152	1	Dog, Reverse
3	3446-138	1	Gear, 3rd Drive	30	3423-263	1	Washer
4	3446-139	1	Gear, 4th Drive	31	3402-218	1	Bearing - Right
5	3402-229	1	Bushing	32	3402-220	1	Bearing - Middle
6	3402-210	2	Washer	33	3446-057	1	Housing, Speedometer Gear (4X4)
7	3423-279	2	Circlip	34	3446-244	1	Gasket
8	3446-140	1	Gear, 5th Drive	35	3446-228	1	Gear, Speedometer Drive (4X4)
9	3423-261	1	Washer	36	3423-336	1	Washer - Right (4X4)
10	0691-374	1	Bearing - Right	37	3423-337	1	Washer - Left (4X4)
11	3446-031	2	Retainer	38	3446-114	1	Spacer (4X4)
12	3423-370	2	Screw	39	3446-229	1	Gear, Speedometer Driven (4X4)
13	3402-224	1	Bearing - Middle	40	3423-144	1	Washer (4X4)
14	3402-797	1	Driveshaft	41	3446-058	1	Sleeve (4X4)
15	3446-141	1	Gear, 1st Driven	42	3402-077	1	Seal, Oil (4X4)
16	3446-273	2	Bushing	43	3423-056	1	O-Ring (4X4)
17	3423-036	3	Washer	44	3423-123	1	Screw, Cap (4X4)
18	3423-066	4	Circlip	45	3423-346	2	Screw, Cap (4X4)
19	3446-142	1	Gear, 2nd Driven	46	3402-009	1	Washer (4X4)
20	3402-230	1	Bushing	47	3446-148	1	Shaft, Reverse Idle
21	3423-317	1	Washer	48	3446-149	1	Gear, Reverse Idle
22	3446-143	1	Gear, 3rd Driven	49	3402-228	1	Bushing
23	3423-266	1	Washer, Lock	50	3446-150	1	Spacer
24	3423-262	1	Washer, Lock	51	3402-209	1	Washer
25	3446-146	1	Gear, 4th Driven	52	3402-255	1	Plug, Cover - Hole (2X4)
26	3446-147	1	Gear, 5th Driven	53	3446-260	1	Retainer, Cover Plug (2X4)
27	3446-151	1	Gear, Reverse Driven	54	3423-363	2	Bolt, Retainer (2X4)



SECONDARY TRANSMISSION ASSEMBLY

0737-850

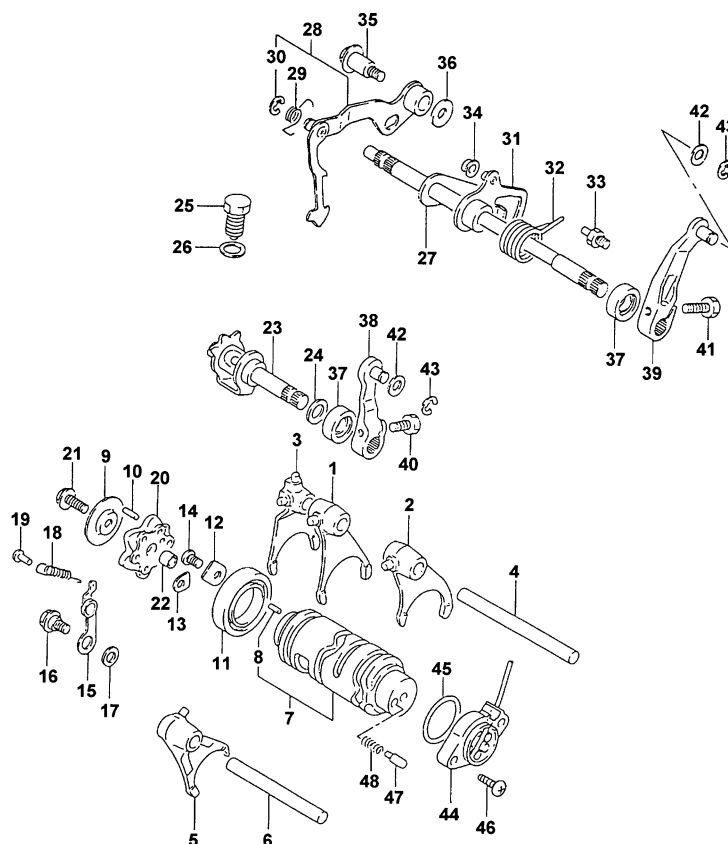
Ref.	Part No.	Qty.	Description	Ref.	Part No.	Qty.	Description
1	3446-179	1	Shaft, Sub-Transmission	22	3402-207	1	Spacer
	3402-798	1	Shaft, Sub-Transmission (4X4)	23	3423-066	1	Circlip
2	3446-184	1	Gear, Driven	24	3446-272	1	Gear, Idler (inc. 25)
	3446-207	1	Gear, Driven (4X4)	25	3423-534	1	● Circlip
3	3423-338	1	Washer - Right (4X4)	26	3402-205	1	Washer
4	3423-298	1	Washer - Left (4X4)	27	3423-319	1	Washer
5	3446-208	1	Gear, Driven (4X4)	28	3003-261	1	Bearing, Drive - Left
6	3446-209	1	Dog, Driven Gear (4X4)	29	3402-217	1	Bearing, Countershaft - Left
7	3423-317	1	Washer (4X4)	30	3446-185	1	Fork
8	3423-318	1	Circlip	31	3446-210	1	Fork (4X4)
9	3402-278	1	Bearing - Right	32	3446-271	1	Shaft
10	3004-209	1	Bearing - Left	33	3446-230	1	Shaft (4X4)
11	3402-180	1	Bearing - Middle	34	3446-186	1	Cam, Sub-Transmission Gear
12	3446-031	2	Retainer		3446-211	1	Cam, Sub-Transmission Gear (4X4)
13	3446-154	1	Retainer	35	3446-187	1	Stopper
14	3423-370	2	Screw	36	3402-241	1	Spring
15	3003-484	2	Screw	37	3423-141	1	Washer
16	3446-275	1	Gear, Drive	38	3423-535	1	Screw, Cap
17	3446-259	1	Bushing	39	3423-268	1	Pin (4X4)
18	3423-036	1	Washer	40	3446-116	1	Arm
19	3446-182	1	Gear, Drive	41	3423-125	1	Screw, Cap
20	3446-183	1	Dog, Drive Gear	42	3402-076	1	Seal, Oil
21	3402-195	1	Washer				



SECONDARY GEAR/OUTPUT SHAFT ASSEMBLY

0733-756

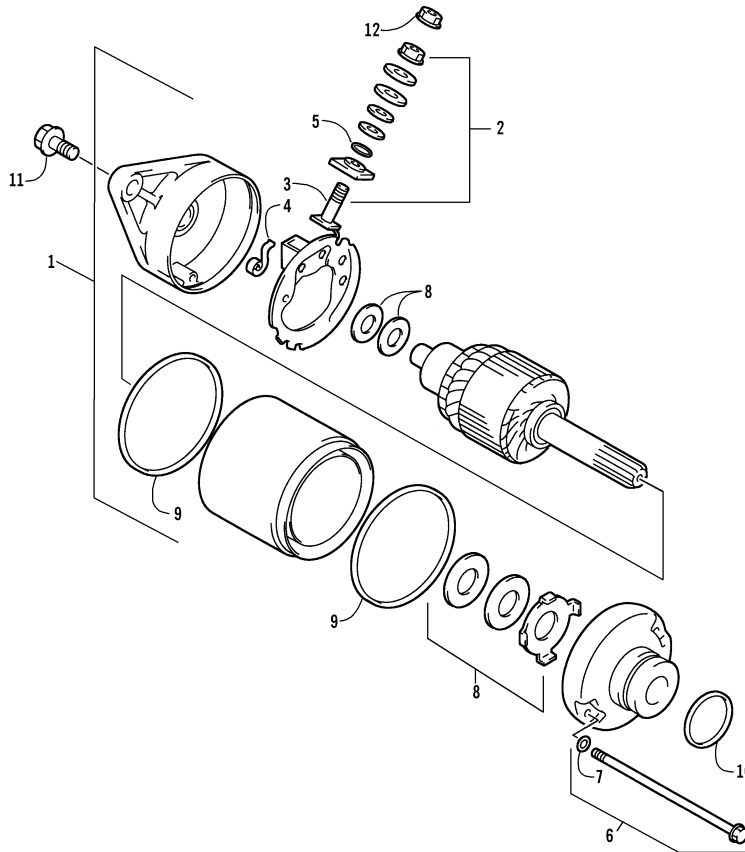
Ref.	Part No.	Qty.	Description	Ref.	Part No.	Qty.	Description
1	3446-197	1	Gear, Secondary Drive Bevel (4X4)	11	3423-340	1	Circlip (4X4)
2	3446-035	1	Shim Set, Secondary Drive Bevel (4X4)	12	3446-176	1	Shaft, Rear Final Driven
3	3423-032	1	Washer (4X4)	13	3446-175	1	Gear, Driven
4	3423-537	1	Nut (4X4)	14	3402-219	2	Bearing
5	3402-067	1	Bearing, Front (4X4)	15	3402-072	2	Seal, Oil
6	3402-515	1	Bearing, Rear (4X4)	16	3435-005	1	Boot (4X4)
7	3423-072	1	Ring (4X4)	17	3435-002	1	Yoke, Output Shaft Joint (4X4)
8	3446-199	1	Shaft, Secondary Output (4X4)	18	3423-025	1	Nut (4X4)
9	3402-308	AR	Shim, 25 x 34 x 0.50 mm (4X4)	19	3423-028	1	Washer (4X4)
	3402-017	AR	Shim, 25 x 34 x 0.60 mm (4X4)	20	3446-198	1	Gear, Secondary Driven Bevel (4X4)
	3402-018	AR	Shim, 25 x 34 x 0.65 mm (4X4)	21	3423-281	2	Ring
	3402-019	AR	Shim, 25 x 34 x 0.70 mm (4X4)	22	3423-321	2	Circlip
	3402-020	AR	Shim, 25 x 34 x 0.75 mm (4X4)	23	3435-007	1	Coupling (4X4)
	3402-021	AR	Shim, 25 x 34 x 0.80 mm (4X4)	24	3435-011	1	Joint, Universal (inc. 25) (4X4)
	3402-022	AR	Shim, 25 x 34 x 0.85 mm (4X4)	25	3423-067	4	● Circlip (4X4)
	3402-023	AR	Shim, 25 x 34 x 0.90 mm (4X4)	26	3423-182	6	Screw, Cap (4X4)
	3402-024	AR	Shim, 25 x 34 x 0.95 mm (4X4)	27	3004-491	6	Nut (4X4)
	3402-025	AR	Shim, 25 x 34 x 1.00 mm (4X4)	28	3435-090	1	Yoke, Output - Front (inc. 29-32) (4X4)
	3402-028	AR	Shim, 25 x 34 x 1.05 mm (4X4)	29	3423-060	1	● O-Ring (4X4)
	3402-029	AR	Shim, 25 x 34 x 1.10 mm (4X4)	30	3423-035	1	● Plate (4X4)
	3402-030	AR	Shim, 25 x 34 x 1.15 mm (4X4)	31	3435-029	1	● Collar (4X4)
	3402-031	AR	Shim, 25 x 34 x 1.20 mm (4X4)	32	3435-030	1	● Plate, Oil Seal (4X4)
10	3402-072	1	Seal, Oil				



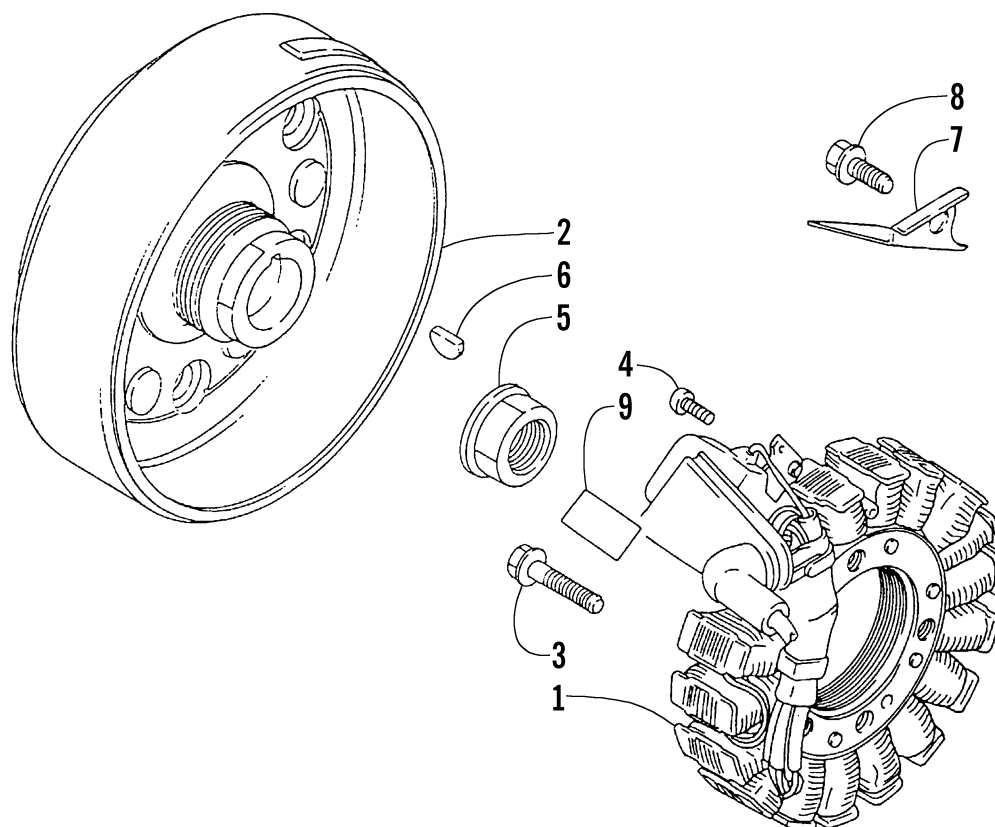
GEAR SHIFTING ASSEMBLY

0733-757

Ref.	Part No.	Qty.	Description	Ref.	Part No.	Qty.	Description
1	3446-155	1	Fork, Gear Shifting	25	3446-164	1	Stopper, Cam
2	3446-156	1	Fork, Gear Shifting	26	3402-012	1	Gasket
3	3446-159	1	Fork, Gear Shifting	27	3446-169	1	Shaft, Gear Shifting
4	3446-167	1	Shaft	28	3446-170	1	Arm, Gear Shifting (inc. 29-30)
5	3446-157	1	Fork, Gear Shifting	29	3402-312	1	● Spring
6	3446-051	1	Shaft	30	3423-368	1	● E-Ring
7	3446-160	1	Cam, Gear Shifting (inc. 8)	31	3446-171	1	Arm, Link
8	3423-114	1	● Pin	32	3402-094	1	Spring
9	3446-162	1	Retainer, Pin	33	3446-172	1	Stopper, Arm
10	3423-045	6	Pin	34	3402-132	1	Roller
11	3402-051	1	Bearing	35	3423-233	1	Screw, Cap
12	3446-163	1	Retainer	36	3423-324	1	Washer
13	3446-031	1	Retainer	37	3402-076	2	Seal, Oil
14	3423-370	2	Screw, Cap	38	3446-055	1	Arm
15	3446-165	1	Stopper, Cam	39	3446-115	1	Arm, Reverse Shift
16	3423-535	1	Screw, Cap	40	3423-125	1	Screw, Cap
17	3423-141	1	Washer	41	3423-228	1	Screw, Cap
18	3402-240	1	Spring	42	3423-204	2	Washer
19	3423-268	1	Pin	43	3423-168	2	E-Ring
20	3446-166	1	Plate, Stopper	44	3430-050	1	Base, Gear Shift - Assembly
21	3006-086	1	Bolt	45	3423-273	1	O-Ring
22	3005-206	1	Pin	46	3423-325	2	Screw, Cap
23	3446-161	1	Cam, Reverse Shifting	47	3423-044	1	Contact
24	3423-322	1	Washer	48	3402-087	1	Spring



Ref.	Part No.	Qty.	Description	Ref.	Part No.	Qty.	Description
1	3545-017	1	Motor, Starter - Assembly (inc. 2-10)	7	3423-496	2	● ● O-Ring
2	3402-671	1	● Terminal Set, Brush	8	3008-099	1	● Washer Set
3	3402-799	1	● Holder Set, Brush	9	3423-397	2	● O-Ring
4	3008-551	2	● Spring, Brush	10	3008-363	1	● O-Ring
5	3008-164	1	● O-Ring	11	3004-756	2	Screw, Cap
6	3423-536	2	● Through-Bolt (inc. 7)	12	3423-195	1	Nut



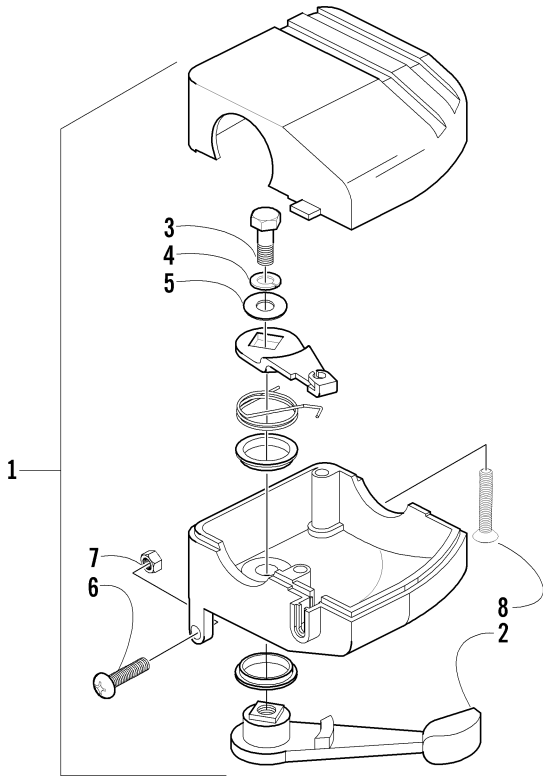
MAGNETO ASSEMBLY

0733-761

Ref.	Part No.	Qty.	Description	Ref.	Part No.	Qty.	Description
1	3430-021	1	Stator - Assembly	6	3004-540	1	Key
2	3430-022	1	Rotor/Flywheel	7	3430-023	1	Plate
3	3004-756	3	Bolt, Magneto	8	3423-112	1	Screw, Cap
4	3423-326	2	Screw, Cap	9	3430-036	1	Shield, Heat Protection
5	3423-086	1	Nut, Magneto				

0737-650

40



THROTTLE CASE ASSEMBLY

0737-633

Ref.	Part No.	Qty.	Description	Ref.	Part No.	Qty.	Description
1	3509-003	1	Case, Throttle - Assembly (inc. 2-8)	5	3003-030	1	● Washer
2	3409-001	1	● Lever	6	3423-014	1	● Screw
3	3004-533	1	● Screw, Cap	7	3423-327	1	● Nut
4	3004-447	1	● Washer, Lock	8	3423-199	2	● Screw

RELATED ITEMS

2003 ATV 300

2x4 Red (Model No. A2003ATF2AUSR)

4x4 Red (Model No. A2003ATF4AUSR)

2x4 Green (Model No. A2003ATF2AUSG)

4x4 Green (Model No. A2003ATF4AUSG)

0436-337	Bag, Rack, Front, Black - Deluxe	0436-014	Safety Flag
0436-336	Bag, Rack, Rear, Black - Deluxe	0436-168	Shock Covers, Front & Rear
0436-185	Bag, Tank, Black	0436-228	Snowplow Blade, 50 in. - Straight (use w/0436-356)
0436-432	Brush Guard/Bumper, Deluxe (4x4)	0436-287	Snowplow Blade, 50 in. - One-Way (use w/0436-356)
0436-330	Bumper (Rear)	0436-356	Snowplow Push Frame
0436-139	Cargo Trailer - Deluxe	0436-233	Snowplow Remote Angle Adjust
0436-381	Cover, Green and Black	0436-357	Snowplow Attachment Kit
0436-125	Cover, Gray - Universal	0436-383	Snowplow, Hand Lift Lever Kit
0436-304	CV Joint Protectors, Deluxe (Front)	0436-026	Tire Chains, Size B
0436-087	Electrical Plug	0402-319	Tire, Titan AT489A (25x10-12)
0436-199	Gun Scabbard w/Mount	0402-317	Tire, Titan AT489A (24x9-12)
0436-352	Hand/Thumb Warmers	0402-316	Tire, Titan AT489A (23x8-12)
0436-103	Hourmeter	0436-297	Tool Holder - Double (Pair)
2256-691	Illustrated Parts Manual	0436-263	Tool Holder - Single (Pair)
0436-122	Lunch Pack, Black	0436-068	Winch Accessories Kit
2256-593	Operator's Manual	0436-329	Winch Kit, 2500 lb
0652-024	Paint, Metal - Black	0436-361	Winch Mounting Kit
0436-177	Prefilter, Air Filter	0436-303	Windshield, Clear
0436-349	Rack Extension, 4 in. (Front)	0436-301	Windshield, Clear w/Accent
0436-225	Rack Extension, 4 in. (Rear)	0436-302	Windshield, Smoke w/Accent
0436-226	Rack Extension, 8 in. (Rear)		
0436-201	Rack Pouch, STD Rack, Black		

