

SPARE PARTS CATALOG

4-Stroke Engine

MPE 850 OFF-ROAD

This spare parts catalog is valid for the following engine models:

- 409135 I2 846 UTV
- 410750 I2 846 UTV
- 411454 I2 846 UTV
- 411457 I2 846 UTV

TD410022
Rev D
08.02.2018
en_English

TEXTRON MOTORS GmbH strives to make continual improvements as part of the ongoing technical development of its products. All documentation is therefore subject to technical modifications.

Reprints and translations, in whole or in part, require written permission from TEXTRON MOTORS GmbH.

All rights reserved according to the copyright law.

TEXTRON MOTORS GmbH

Daimlerstraße 5

88677 Markdorf

Germany

WWW.TEXTRONMOTORS.COM

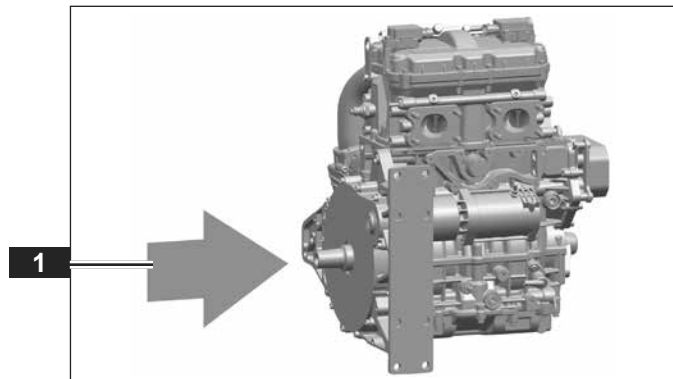
<u>1 ABOUT THIS DOCUMENT</u>	<u>4</u>	<u>080 ENGINE MANAGEMENT SYSTEM</u>	<u>26</u>
Orientation engine	4	<u>090 STARTER, GENERATOR</u>	<u>28</u>
Meaning of the characteristics	4	090.01 Starter	28
Abbreviations	5	090.02 Generator.	29
Change management.	5	<u>100 FUEL UNIT</u>	<u>30</u>
<u>010 CRANKCASE</u>	<u>6</u>	100.01 Fuel Rail.	30
010.01-1 Crankcase.	6	<u>110 LUBRICATION SYSTEM</u>	<u>32</u>
010.01-2 Crankcase.	7	110.01 Dry Sump	32
010.01-3 Crankcase.	8	110.02 Oil Pressure Pump.	33
010.02-1 Oil Cooler Bracket.	9	110.03 Oil Pressure Valve	34
010.02-2 Oil Cooler Bracket.	10	110.04 Oil Filter	35
010.03 Generator Cover	11	<u>120 ENGINE MOUNT</u>	<u>36</u>
<u>020 CRANK DRIVE</u>	<u>12</u>	120.01 Lifting Eye	36
020.01 Crankshaft	12	<u>900 TOOLS AND ACCESSORIES</u>	<u>38</u>
020.02 Stub Shaft	13	900.01 Cases.	38
020.03 Crankshaft Cover.	14	900.02 Special Tools	39
<u>030 CYLINDER HEAD</u>	<u>15</u>	<u>OVERVIEW OF REVISIONS</u>	<u>41</u>
030.01 Valve Cover	15	<u>INDEX</u>	<u>42</u>
030.02 Cylinder Head	16		
<u>040 VALVE TRAIN</u>	<u>17</u>		
040.01 Camshaft	17		
040.02 Rocker Arms	18		
040.03 Valves	19		
<u>050 COOLING SYSTEM</u>	<u>20</u>		
050.01 Thermostat Housing.	20		
050.02 Coolant Pump	21		
050.03 Oil Cooler.	22		
<u>060 EXHAUST SYSTEM</u>	<u>23</u>		
060.01 Mounting Exhaust Manifold	23		
<u>070 INTAKE AREA</u>	<u>24</u>		
070.01 Intake Manifold.	24		
070.02 Mounting Throttle Body	25		

In this spare parts catalog are shown all available service parts, spare parts, repair kits and special tools.
Observe the following information:

- This spare parts catalog is valid for several engine models. Observe the information to the different engine models.
- Always use the most current spare parts catalog at WWW.TEXTRONOFFROAD.COM.
- Please read carefully the spare parts catalog before ordering spare parts.
- Some figures in this spare parts catalog are general illustrations and may differ from the actual engine.

ORIENTATION ENGINE

The arrow **1** helps you orient the illustrated parts in the chapters. The arrow in the chapters always points in the direction as illustrated.



MEANING OF THE CHARACTERISTICS

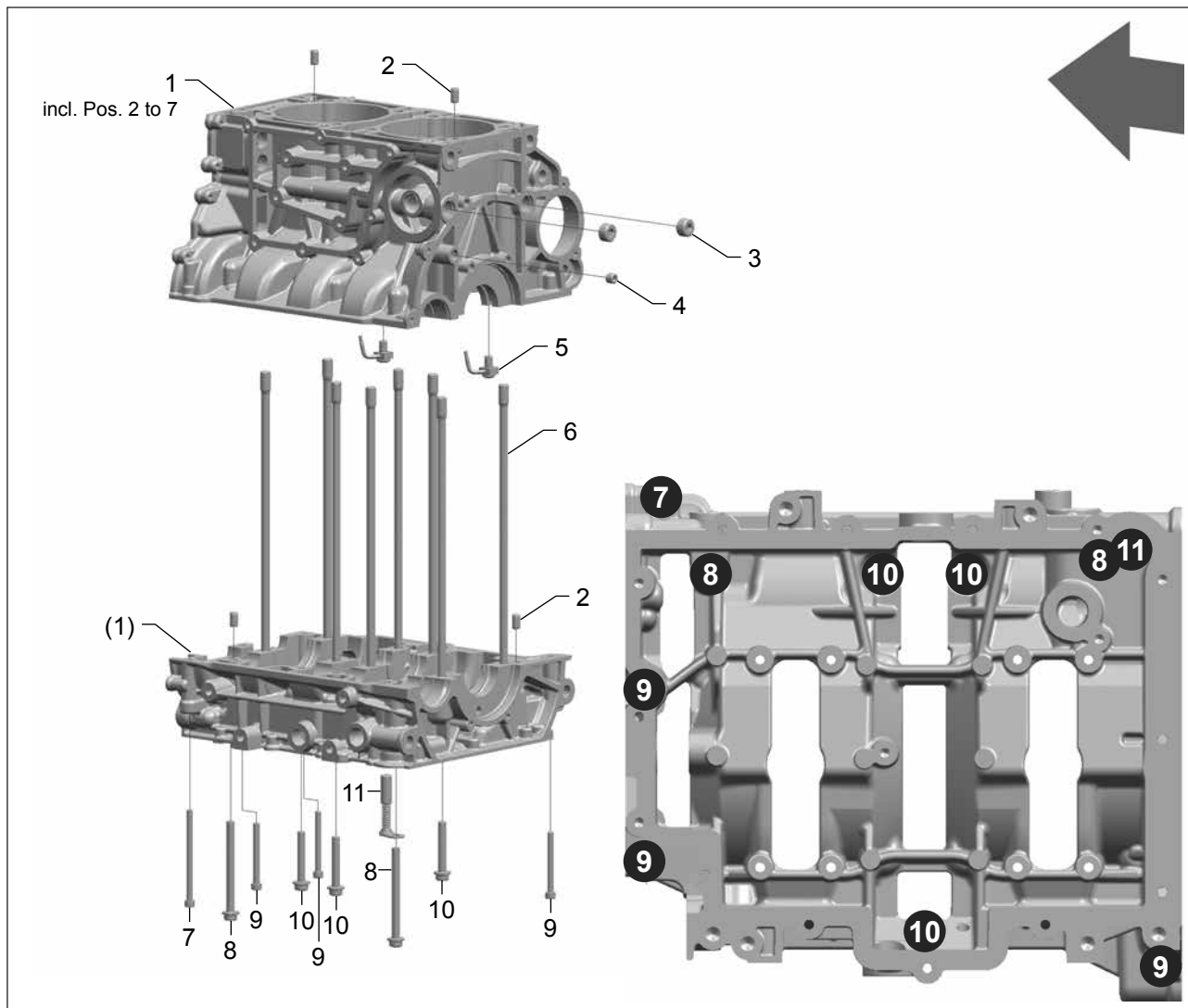
Sign	Meaning
(e)	If you remove this part, you must replace it.
(t)	The thread is provided with a TufLok coating. The TufLok coating seals the thread. If you have unscrewed the part, the coating is not completely effective any more. Replace this part.
(m)	The thread is provided with a micro encapsulated coating. During fastening the bolt, the microcapsules will burst and the contained adhesive and curing agent are released and mixed. If you have unscrewed the part, the coating is not effective any more. Replace this part.
(p)	Parts with the designation (p) are painted parts. All available colors are listed in the spare parts list.

ABBREVIATIONS

Abbreviation	Meaning
NA	Naturally aspirated engine
n/a	Not available

CHANGE MANAGEMENT

TEXTRON MOTORS GmbH strives to make continual improvements as part of the ongoing technical development of its products. Therefore part numbers can change. All changes are described in the chapter OVERVIEW OF REVISIONS.

010.01-1 CRANKCASE


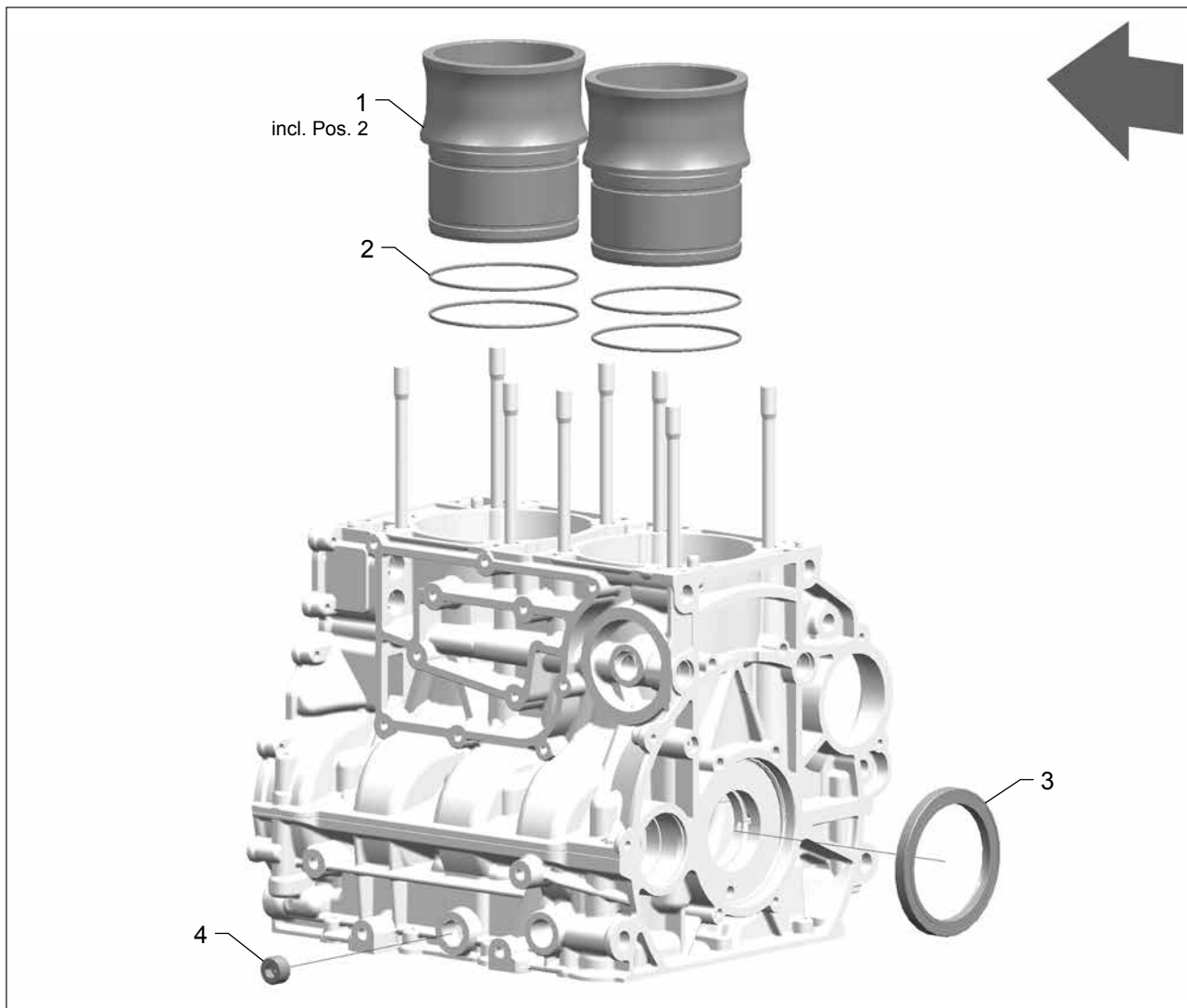
This page is valid for all engine models

Pos.	Part No	Description	QTY
1	104971	Crankcase	1
2	404297	Centering Pin	4
3	408967	Plug M18x1.5	2
4	102992	Plug M10x1	(t) 1
5	404359	Oil Nozzle	2
6	406596	Tie Rod M10x1.25	8
7	404163	Bolt M6x90 8.8	1
8	404870	Bolt M8x90 10.9	2

Pos.	Part No	Description	QTY
9	100506	Bolt M6x60 8.8	3
10	408004	Bolt M8x50 10.9	3
11	*	Oil Pressure Valve	1

* see chapter 110.03 Oil Pressure Valve

(e) replace part (t) thread TufLok coated (m) thread micro encapsulated (p) part is painted
 RAL 9005 (black) RAL9006 (silver-gray) RAL9010 (white)

010.01-2 CRANKCASE


This page is valid for all engine models

Pos.	Part No	Description	QTY
1	404585	Cylinder Liner	2
2	402161	O-Ring	(e) 4
3	101526	Oil Seal	(e) 1
4	408967	Plug M18x1.5	1

(e) replace part (t) thread TufLok coated (m) thread micro encapsulated (p) part is painted
 RAL 9005 (black) RAL9006 (silver-gray) RAL9010 (white)

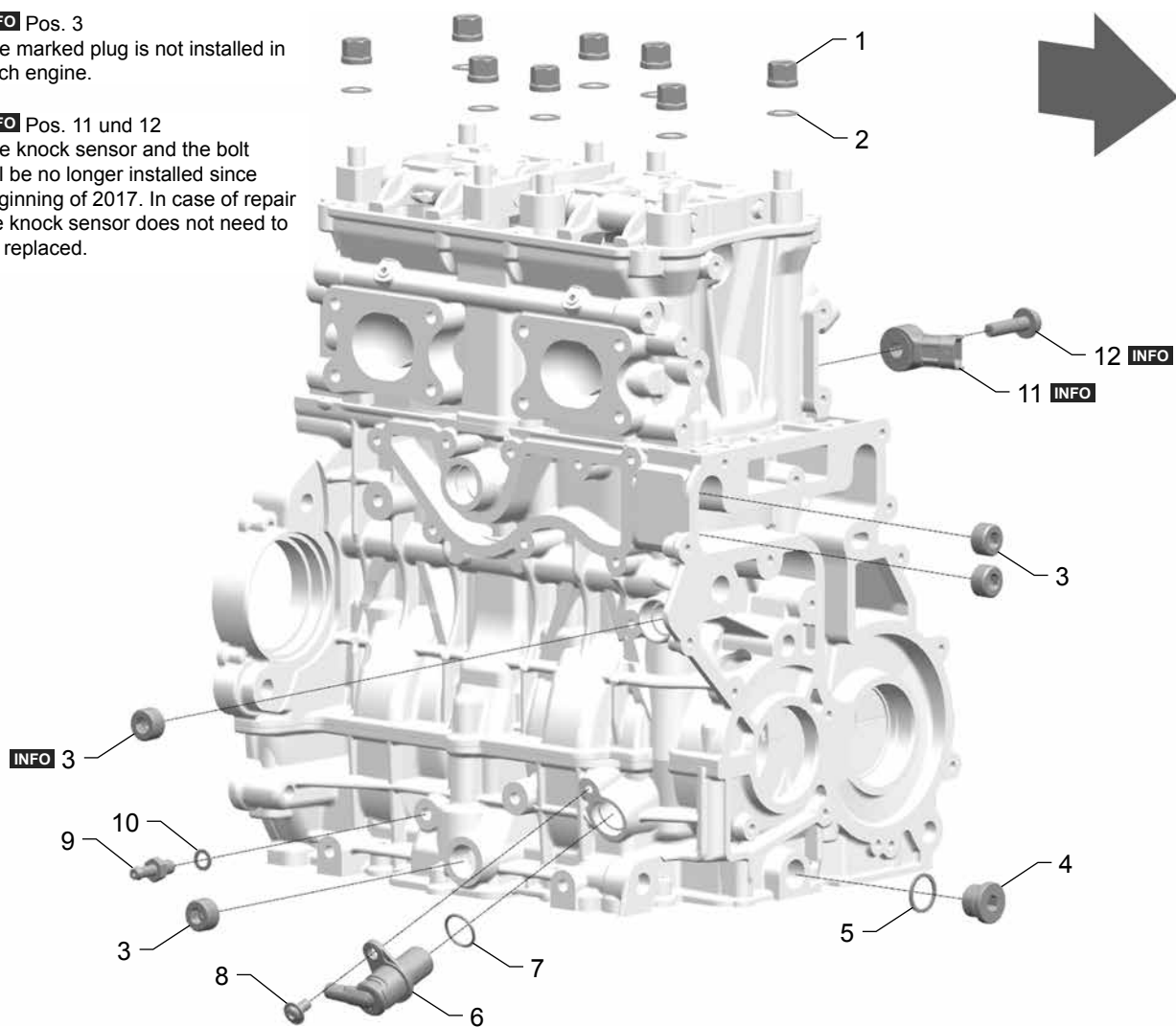
010.01-3 CRANKCASE

INFO Pos. 3

The marked plug is not installed in each engine.

INFO Pos. 11 und 12

The knock sensor and the bolt will be no longer installed since beginning of 2017. In case of repair the knock sensor does not need to be replaced.



This page is valid for all engine models

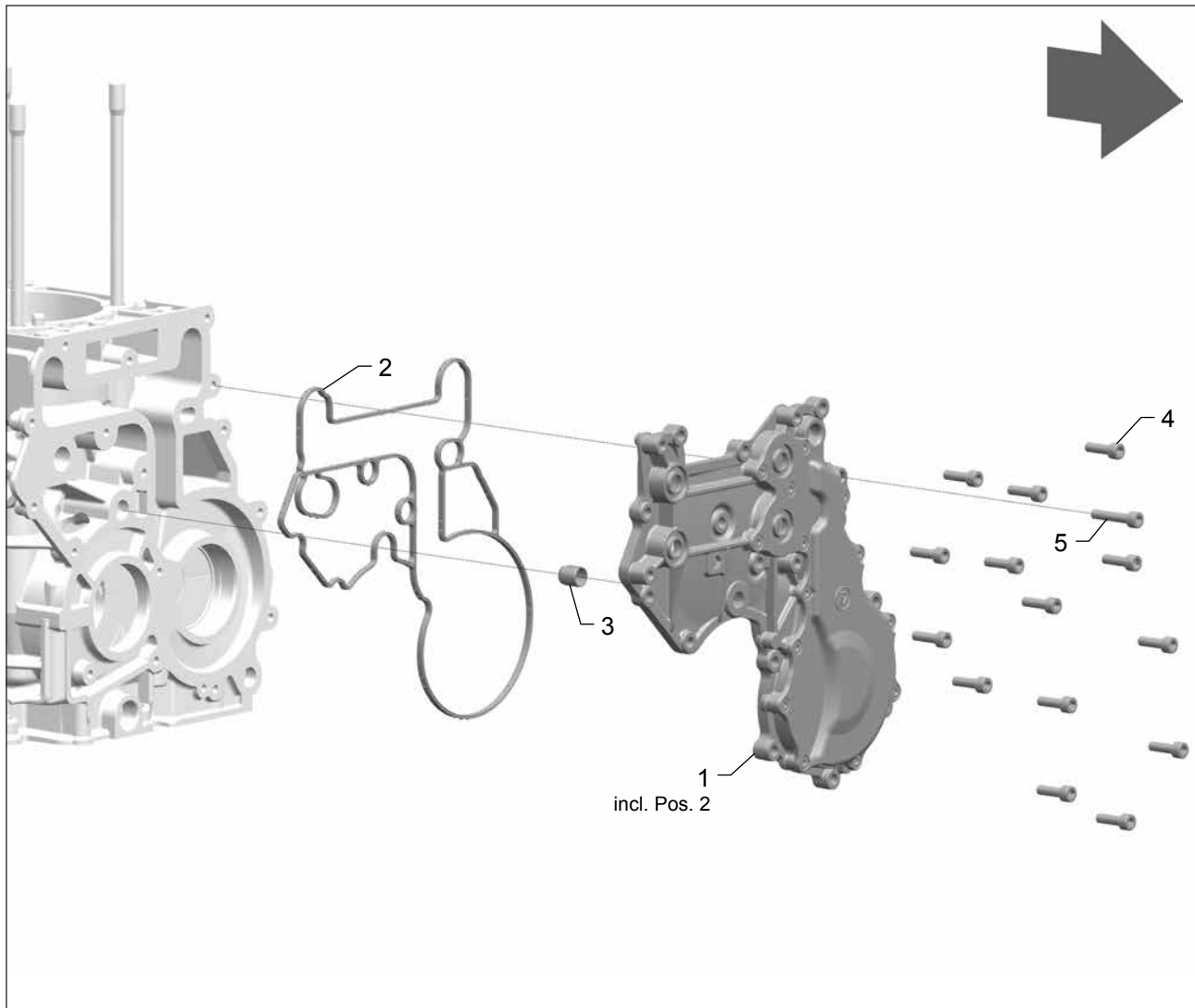
Pos.	Part No	Description	QTY
1	100433	Nut M10x1.25 10.9	8
2	103099	Washer	8
3	408967	Plug M18x1.5	4
4	102523	Plug M18x1.5	1
5	100454	Seal 18x22x1.5 Al	(e) 1
6	*	Sensor Crankshaft	1
7	*	O-Ring	1
8	408118	Bolt M6x12 10.9	1

Pos.	Part No	Description	QTY
9	404122	Fitting	1
10	100587	Seal 8x12x1 Al	(e) 1
11	*	Sensor Knock	1
12	n/a	Bolt M8x30 10.9	1

* see chapter 080 Engine Management System

(e) replace part (t) thread TufLok coated (m) thread micro encapsulated (p) part is painted
 RAL 9005 (black) RAL9006 (silver-gray) RAL9010 (white)

010.02-1 OIL COOLER BRACKET

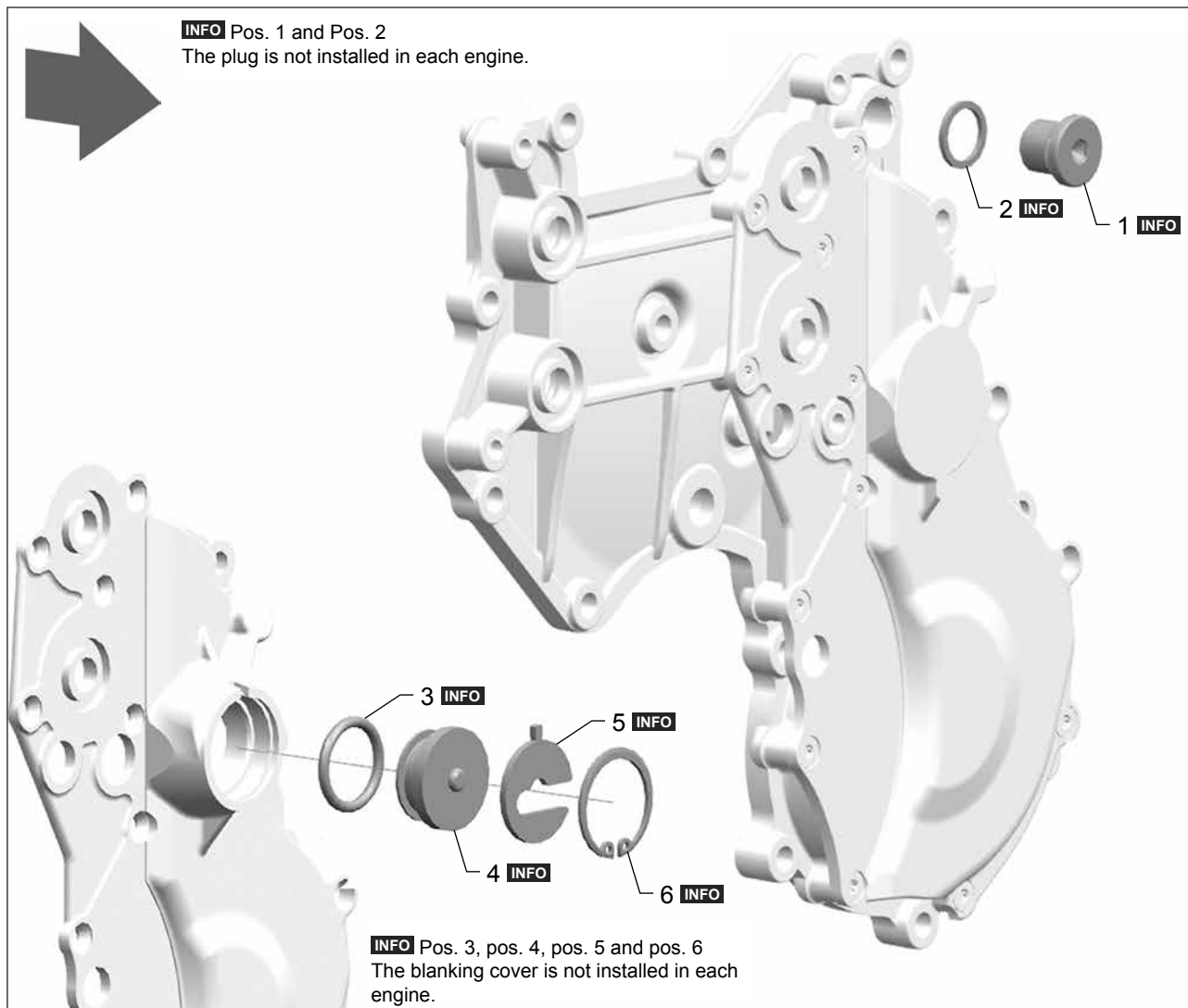


This page is valid for all engine models

Pos.	Part No	Description	QTY
1	410613	Oil Cooler Bracket	1
2	403940	Gasket	(e) 1
3	100228	Sleeve	1
4	100501	Bolt M6x20 8.8	14
5	100520	Bolt M6x30 8.8	1

(e) replace part (t) thread TufLok coated (m) thread micro encapsulated (p) part is painted
RAL 9005 (black) RAL9006 (silver-gray) RAL9010 (white)

010.02-2 OIL COOLER BRACKET



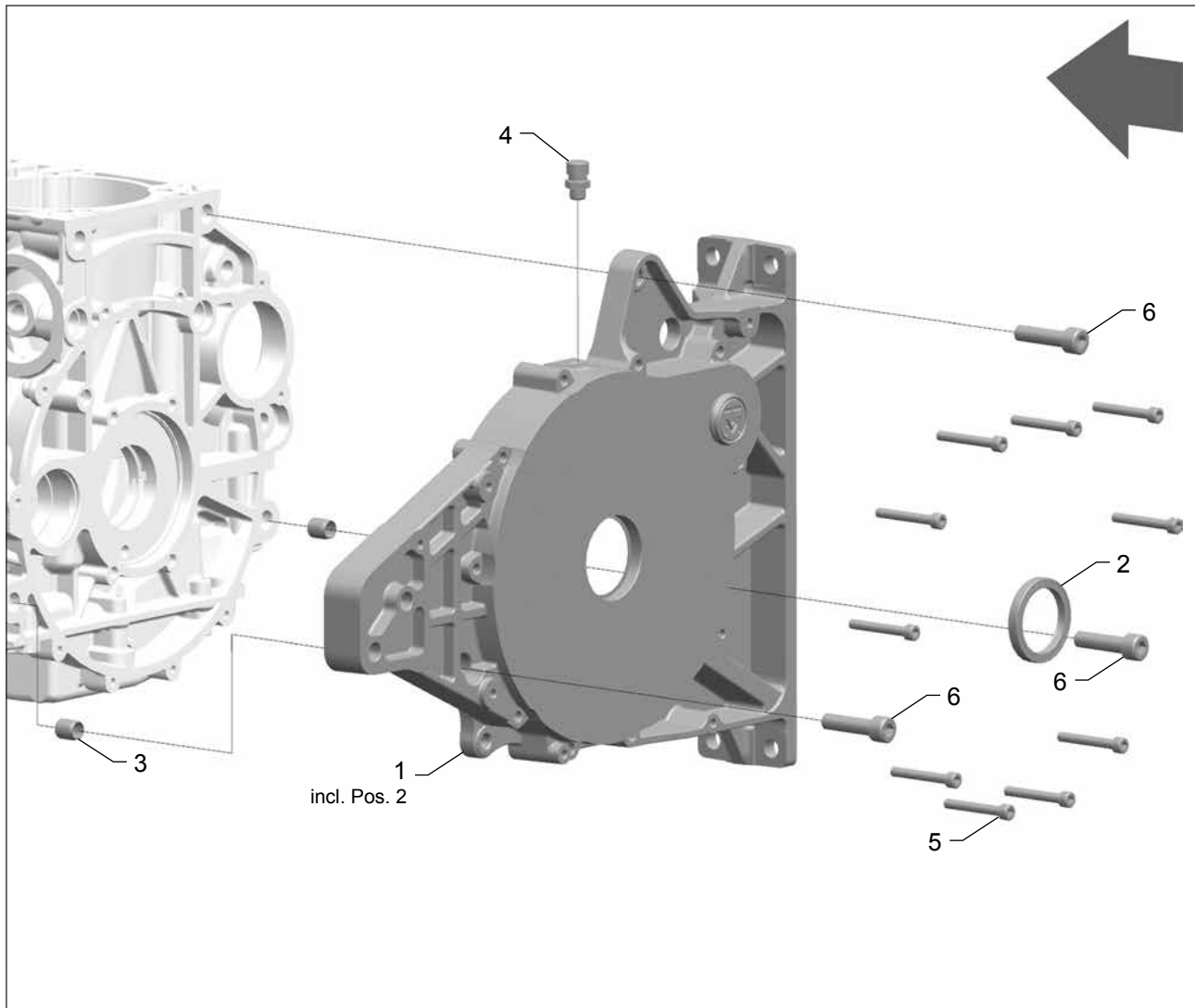
This page is valid for the following engine models:

- 409135 I2 846 UTV
- 411454 I2 846 UTV

Pos.	Part No	Description	QTY
1	402938	Plug M14x1.5	1
2	100529	Seal 14x18x1.5 Al	(e) 1
3	401167	O-Ring	(e) 1
4	406231	Blanking Cover	1
5	407929	Clamp Ring	1
6	407946	Circlip	1

(e) replace part (t) thread TufLok coated (m) thread micro encapsulated (p) part is painted
 RAL 9005 (black) RAL9006 (silver-gray) RAL9010 (white)

010.03 GENERATOR COVER

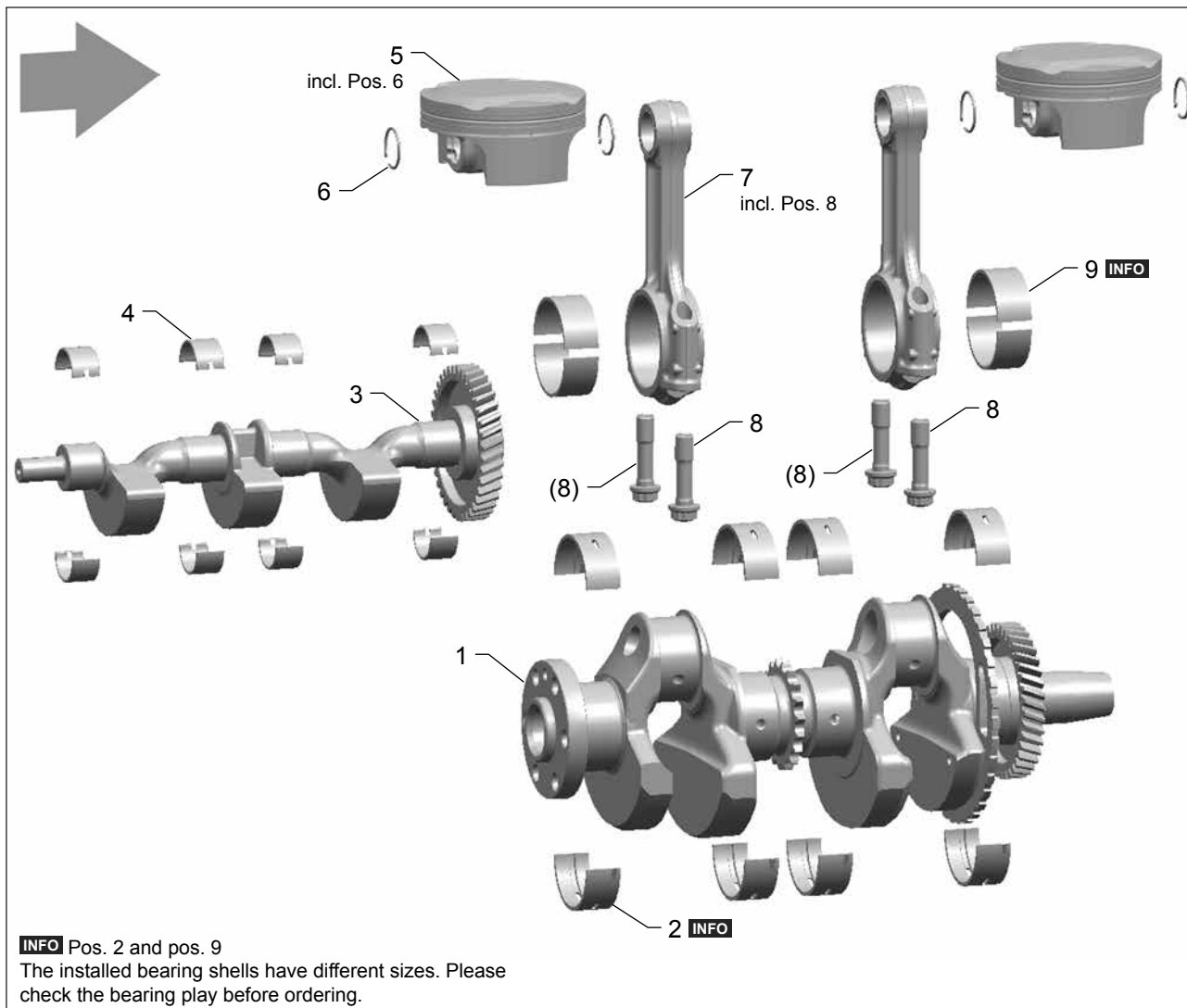


This page is valid for all engine models

Pos.	Part No	Description	QTY
1	410019	Generator Cover	1
2	402082	Oil Seal	(e) 1
3	100228	Sleeve	2
4	410302	Vent Plug M10x1	1
5	100539	Bolt M6x45 8.8	10
6	100555	Bolt M10x40 8.8	3

(e) replace part (t) thread TufLok coated (m) thread micro encapsulated (p) part is painted
RAL 9005 (black) RAL9006 (silver-gray) RAL9010 (white)

020.01 CRANKSHAFT



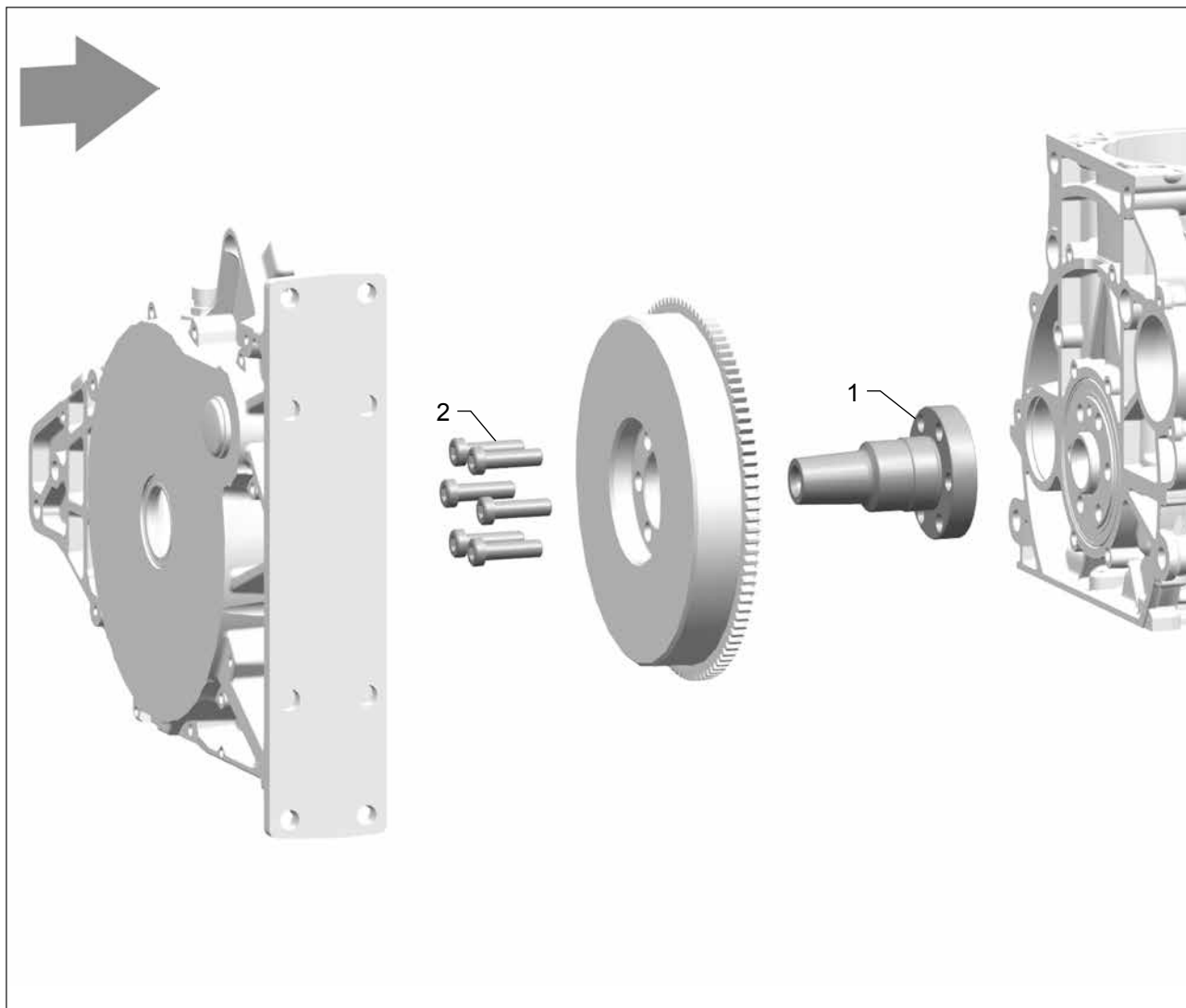
This page is valid for all engine models

Pos.	Part No	Description	QTY
1	411121	Crankshaft	1
2		Main Bearing Shell	8
	100013	Main Bearing Shell Red 1.990mm	
	100012	Main Bearing Shell Yellow 1.995mm	
	100014	Main Bearing Shell Blue 2.000mm	
	100015	Main Bearing Shell Green 2.005mm	
	100016	Main Bearing Shell Brown 2.010mm	
3	410212	Balance Shaft	1
4	100017	Bearing Shell Balance Shaft	8

Pos.	Part No	Description	QTY
5	406413	Piston (NA engine models)	2
6	403995	Circlip	4
7	401270	Con Rod	2
8	103694	2x Con Rod Bolt M10x1x38	(e) 2
9		Con Rod Bearing Shell	4
	100008	Con Rod Bearing Shell Red 1.721mm	
	100007	Con Rod Bearing Shell Yellow 1.726mm	
	100009	Con Rod Bearing Shell Blue 1.731mm	
	100010	Con Rod Bearing Shell Green 1.736mm	
	100011	Con Rod Bearing Shell Brown 1.741mm	

Tolerance of main and con rod bearing shells +0.005mm

(e) replace part (t) thread TufLok coated (m) thread micro encapsulated (p) part is painted
 RAL 9005 (black) RAL9006 (silver-gray) RAL9010 (white)

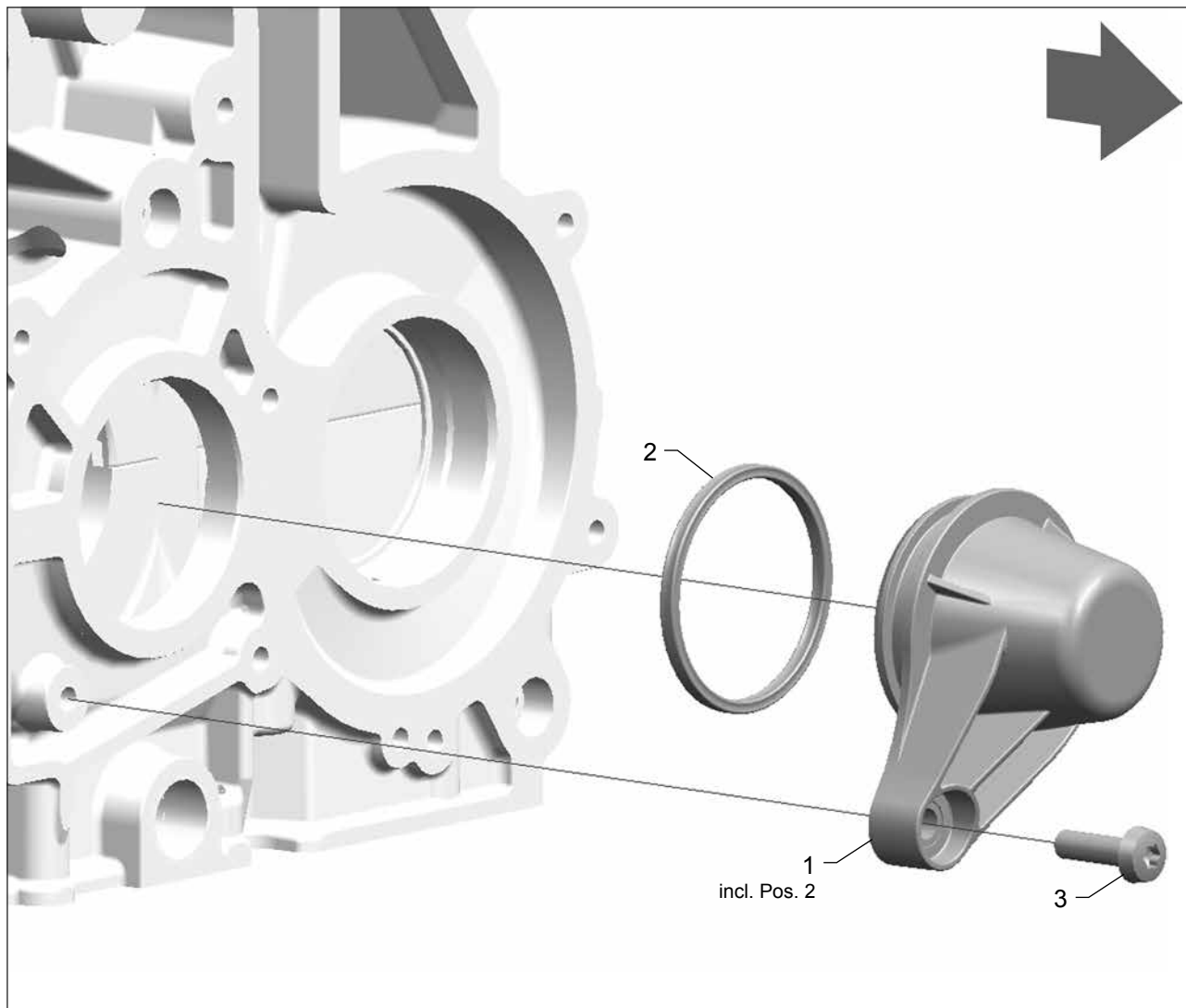
020.02 STUB SHAFT


This page is valid for all engine models

Pos.	Part No	Description	QTY
1	405124	Stub Shaft	1
2	403350	Bolt M10x1x35	(m) 6

(e) replace part (t) thread TufLok coated (m) thread micro encapsulated (p) part is painted
RAL 9005 (black) RAL9006 (silver-gray) RAL9010 (white)

020.03 CRANKSHAFT COVER

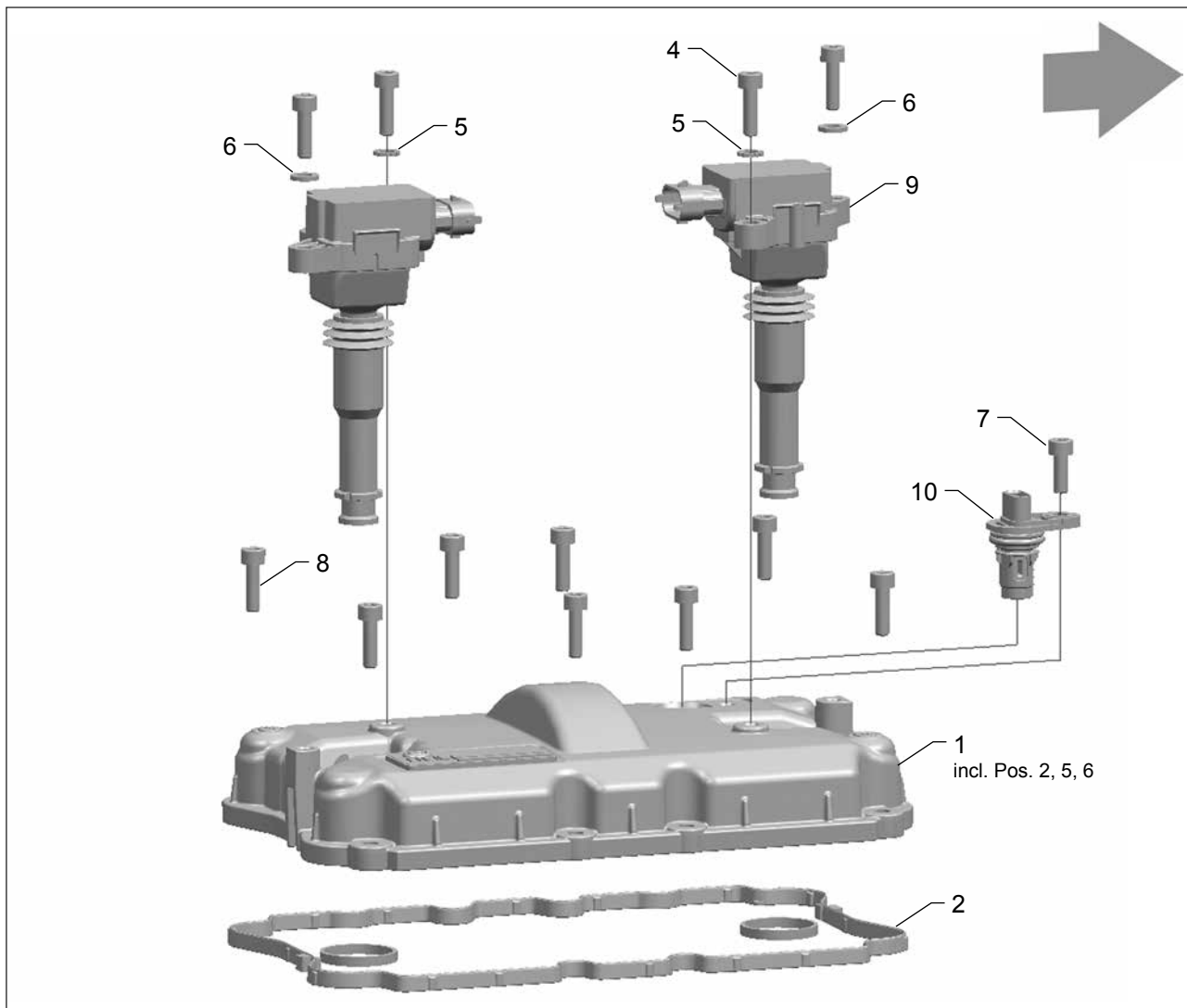


This page is valid for all engine models

Pos.	Part No	Description	QTY
1	403573	Cover	1
2	406817	Gasket	(e) 1
3	404867	Bolt M6x20 8.8	1

(e) replace part (t) thread TufLok coated (m) thread micro encapsulated (p) part is painted
 RAL 9005 (black) RAL9006 (silver-gray) RAL9010 (white)

030.01 VALVE COVER



This page is valid for all engine models

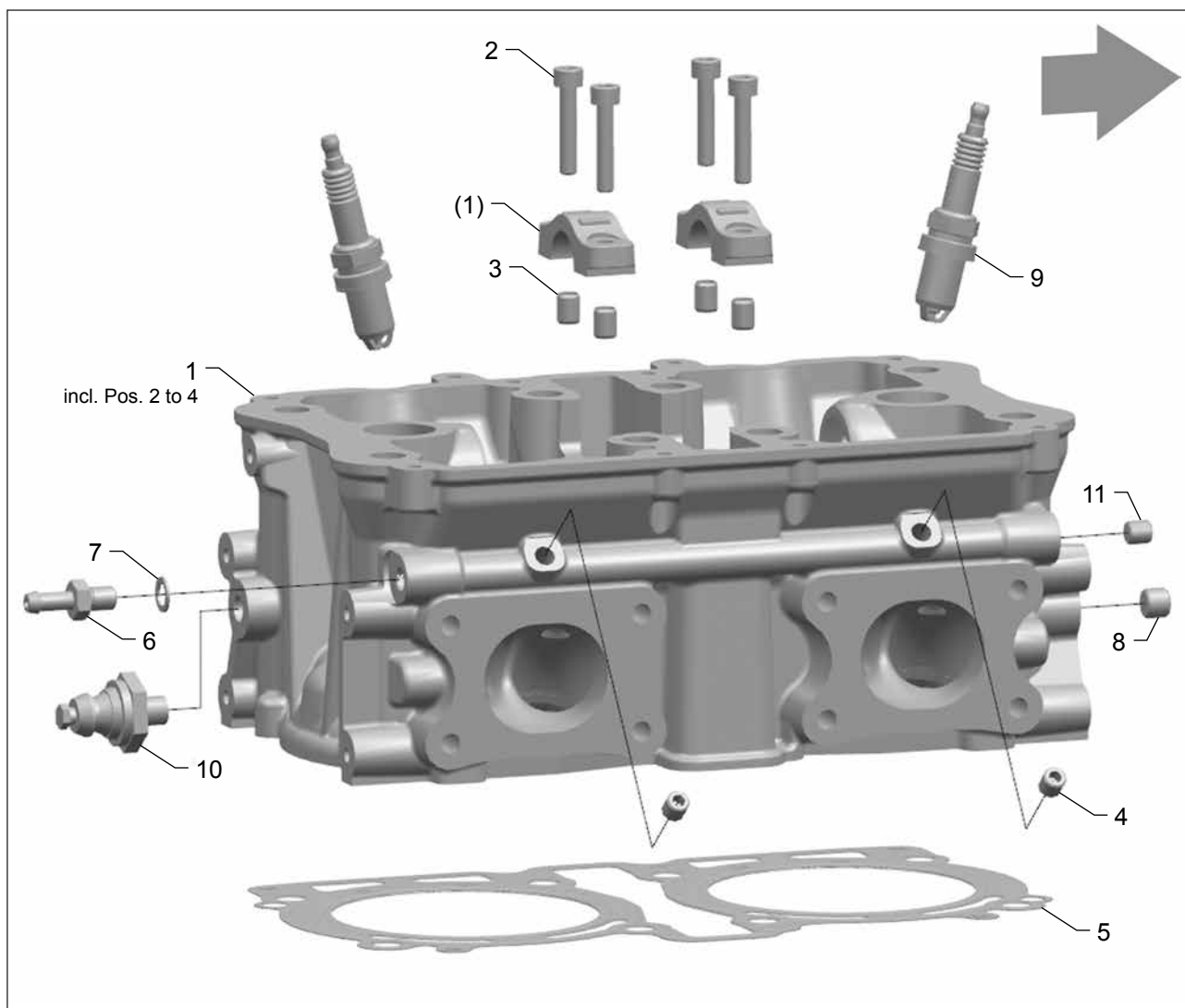
Pos.	Part No	Description	QTY
1	410798	Valve Cover	1
2	104961	Sealing Kit Valve Cover	(e) 1
3	n/a (409014)	Engine Badge	1
4	100501	Bolt M6x20 8.8	4
5	103136	Serrated Lock Washer	(e) 2
6	100448	Washer	2
7	100507	Bolt M6x16 8.8	1
8	100501	Bolt M6x20 8.8	8

Pos.	Part No	Description	QTY
9	*	Ignition Coil	2
10	*	Sensor Camshaft	1

* see chapter 080 Engine Management System

(e) replace part (t) thread TufLok coated (m) thread micro encapsulated (p) part is painted
RAL 9005 (black) RAL9006 (silver-gray) RAL9010 (white)

030.02 CYLINDER HEAD



This page is valid for all engine models

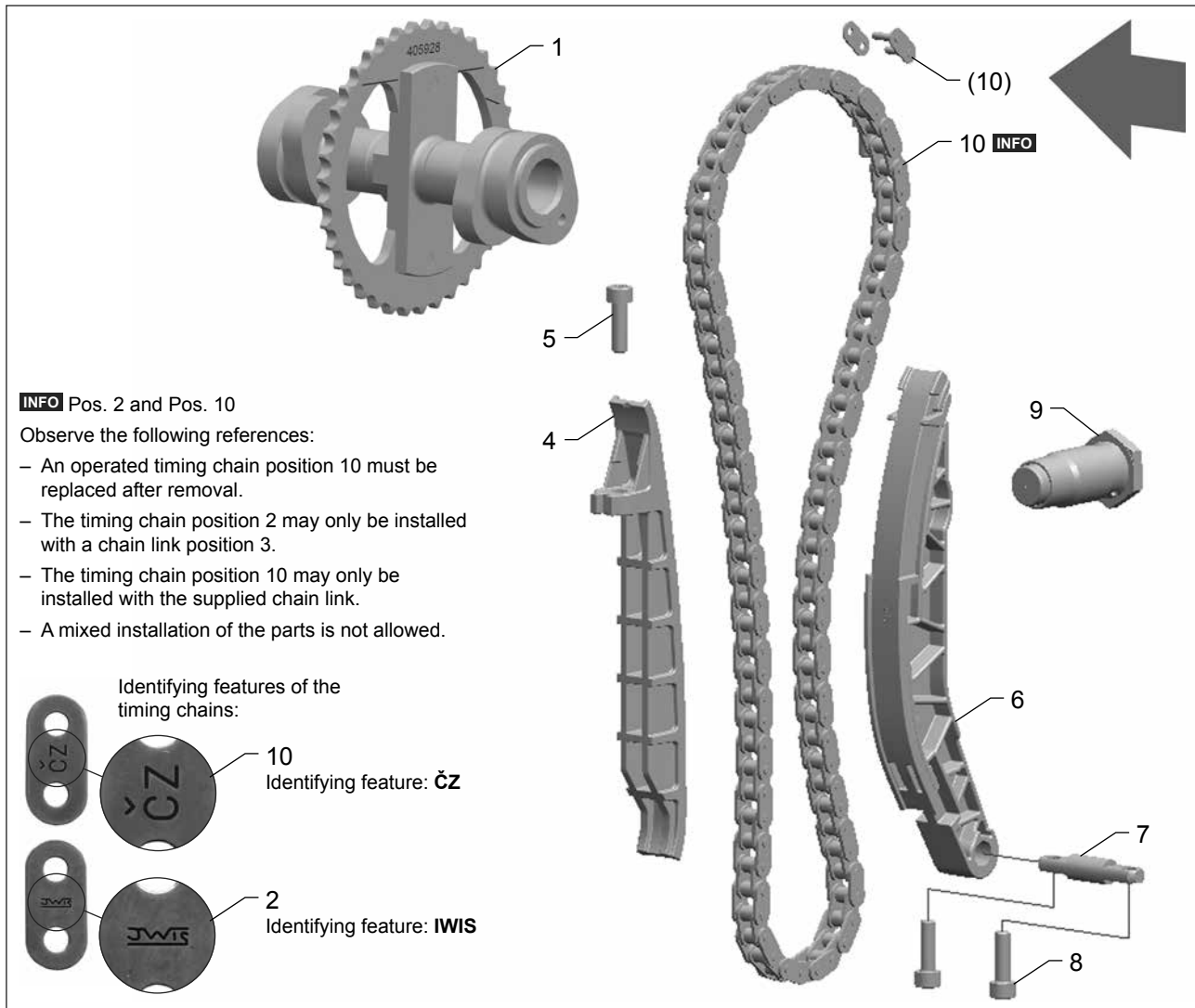
Pos.	Part No	Description	QTY
1	408312	Cylinder Head	1
2	100520	Bolt M6x30 8.8	4
3	100280	Sleeve	4
4	400876	Plug M8x1	(t) 2
5	403948	Cylinder Head Gasket	(e) 1
6	404122	Fitting	1
7	100587	Seal 8x12x1 Al	(e) 1
8	102992	Plug M10x1	(t) 1

Pos.	Part No	Description	QTY
9	*	Spark Plug	2
10	*	Switch Oil Pressure	1
11	400876	Plug M8x1	(t) 1

* see chapter 080 Engine Management System

(e) replace part (t) thread TufLok coated (m) thread micro encapsulated (p) part is painted
 RAL 9005 (black) RAL9006 (silver-gray) RAL9010 (white)

040.01 CAMSHAFT



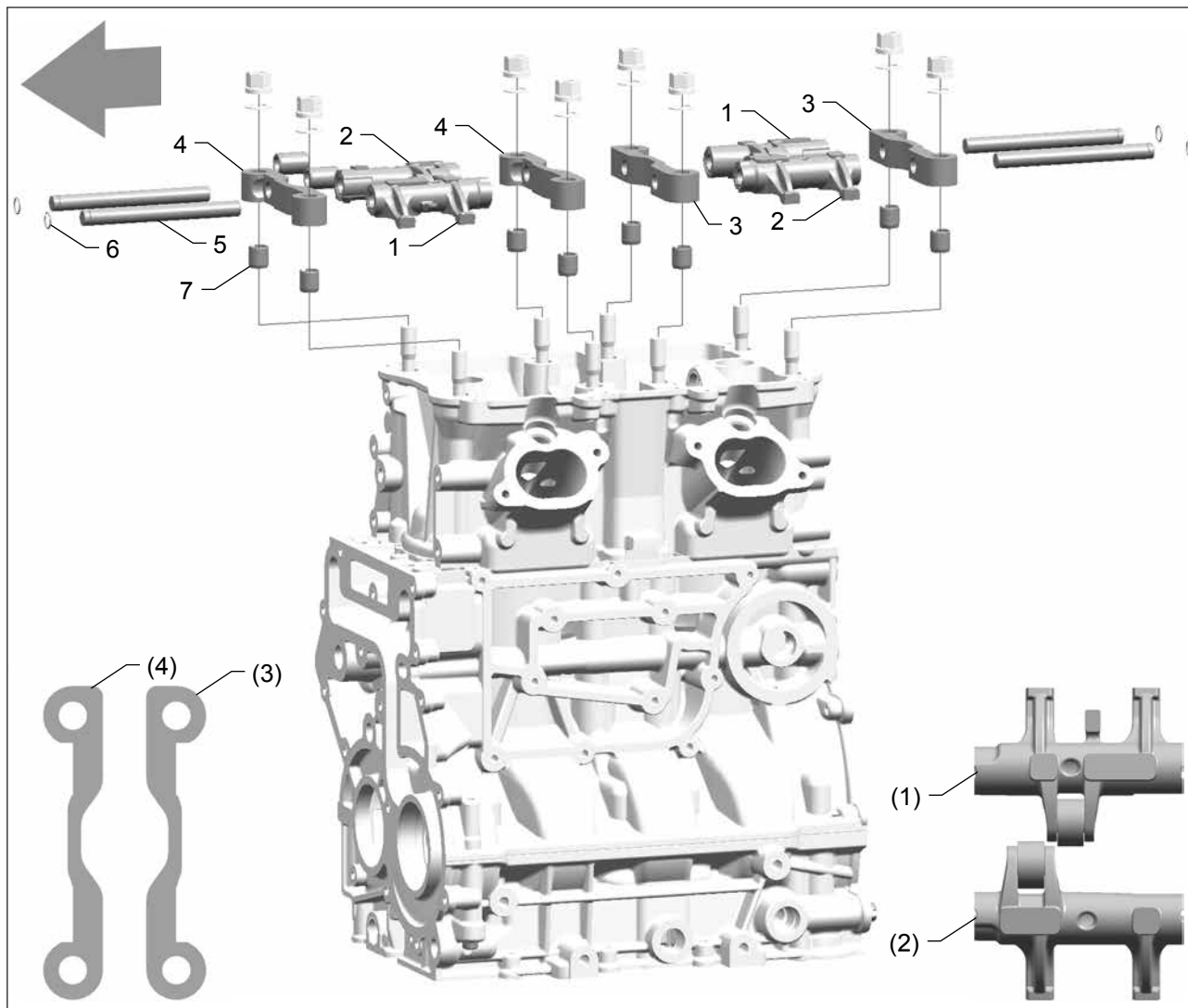
This page is valid for all engine models

Pos.	Part No	Description	QTY
1	409033	Camshaft	1
2	n/a (408035)	Timing Chain	1
3	n/a (408219)	Chain Link, Single	(e) 1
4	402897	Chain Rail	1
5	404867	Bolt M6x20 8.8	1
6	402614	Chain Guide	1
7	404502	Axle Chain Guide	1

Pos.	Part No	Description	QTY
8	100501	Bolt M6x20 8.8	2
9	405005	Chain Tensioner	(e) 1
10	410103	Timing Chain	(e) 1

(e) replace part (t) thread TufLok coated (m) thread micro encapsulated (p) part is painted
RAL 9005 (black) RAL9006 (silver-gray) RAL9010 (white)

040.02 ROCKER ARMS

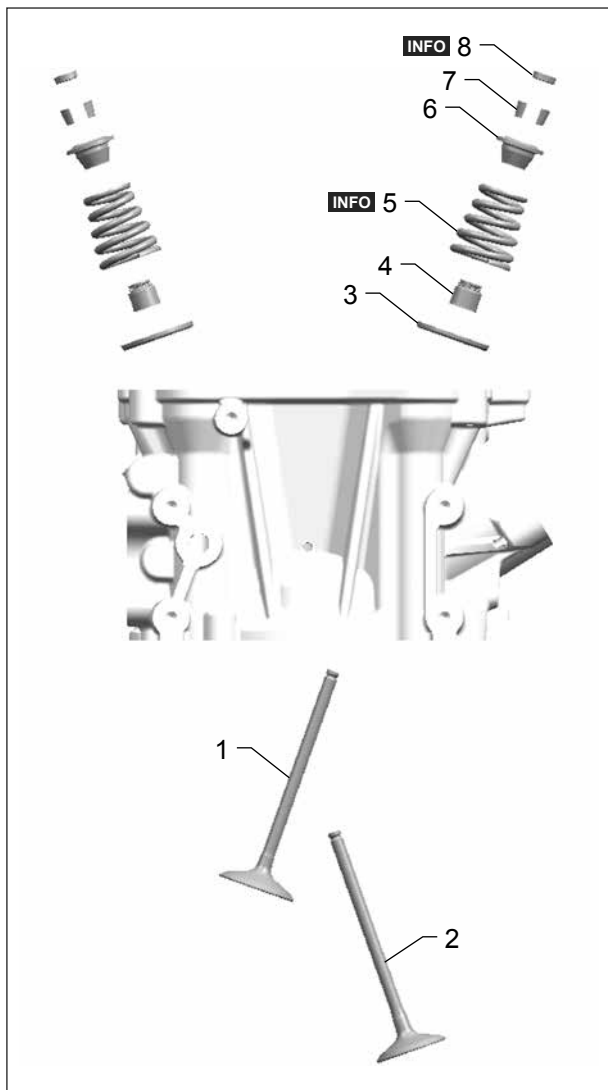


This page is valid for all engine models

Pos.	Part No	Description	QTY
1	411427	Rocker Arm Short	2
2	411428	Rocker Arm Long	2
3	405918	Cross Bar 1	2
4	405917	Cross Bar 2	2
5	405911	Rocker Axle	4
6	403063	Circlip	4
7	100228	Sleeve	8

(e) replace part (t) thread TufLok coated (m) thread micro encapsulated (p) part is painted
 RAL 9005 (black) RAL9006 (silver-gray) RAL9010 (white)

040.03 VALVES



This page is valid for all engine models

Pos.	Part No	Description	QTY
1	401729	Intake Valve	4
2	401730	Exhaust Valve (NA engine models)	4
3	100262	Spring Pad	8
4	100658	Valve Stem Seal	(e) 8
5	406001	Valve Spring yellow	8
6	102316	Spring Cup	8
7	100129	Collet Valve	16

INFO Pos. 5

Valve springs are marked in color and may not be mixed. If a valve spring must be replaced, replace all valve springs.

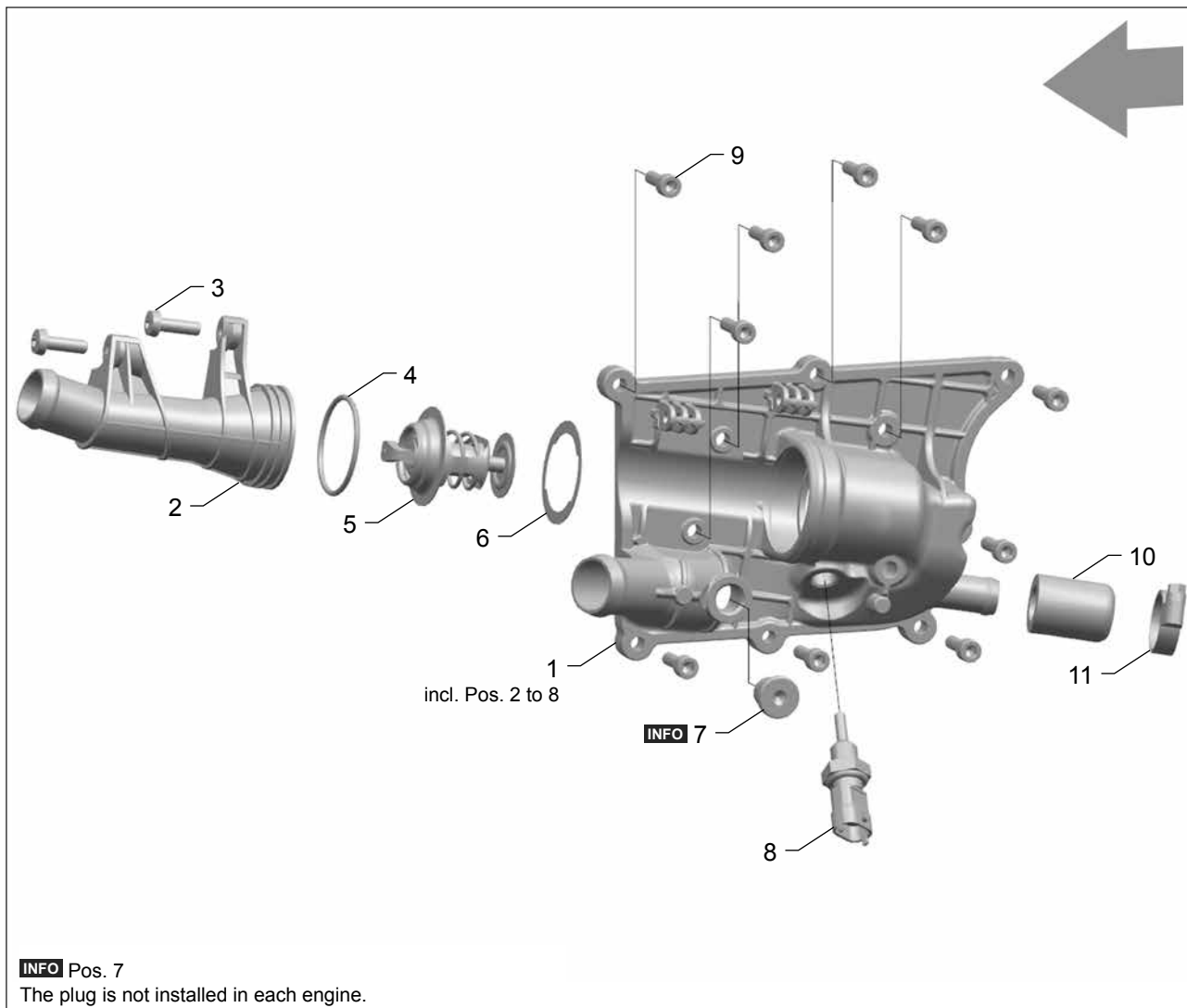
INFO Pos. 8

The valve adjustment shims will be delivered in packages of 8 parts. Order one of the listed valve adjustment shims then you receive 8 parts.

Pos.	Part No	Description	QTY
8		Valve Adjustment Shim	8
	102043	Valve Adjustment Shim 2.50mm	
	102044	Valve Adjustment Shim 2.55mm	
	102045	Valve Adjustment Shim 2.60mm	
	102046	Valve Adjustment Shim 2.65mm	
	102047	Valve Adjustment Shim 2.70mm	
	102048	Valve Adjustment Shim 2.75mm	
	102049	Valve Adjustment Shim 2.80mm	
	102050	Valve Adjustment Shim 2.85mm	
	102051	Valve Adjustment Shim 2.90mm	
	102029	Valve Adjustment Shim 2.95mm	
	102030	Valve Adjustment Shim 3.00mm	
	102052	Valve Adjustment Shim 3.05mm	
	102031	Valve Adjustment Shim 3.10mm	
	102032	Valve Adjustment Shim 3.15mm	
	102033	Valve Adjustment Shim 3.20mm	
	102034	Valve Adjustment Shim 3.25mm	
	102053	Valve Adjustment Shim 3.30mm	
	102035	Valve Adjustment Shim 3.35mm	
	102036	Valve Adjustment Shim 3.40mm	
	102037	Valve Adjustment Shim 3.45mm	
	102038	Valve Adjustment Shim 3.50mm	
	102039	Valve Adjustment Shim 3.55mm	
	102040	Valve Adjustment Shim 3.60mm	
	102041	Valve Adjustment Shim 3.65mm	
	102042	Valve Adjustment Shim 3.70mm	

(e) replace part (t) thread TufLok coated (m) thread micro encapsulated (p) part is painted
RAL 9005 (black) RAL9006 (silver-gray) RAL9010 (white)

050.01 THERMOSTAT HOUSING



This page is valid for all engine models

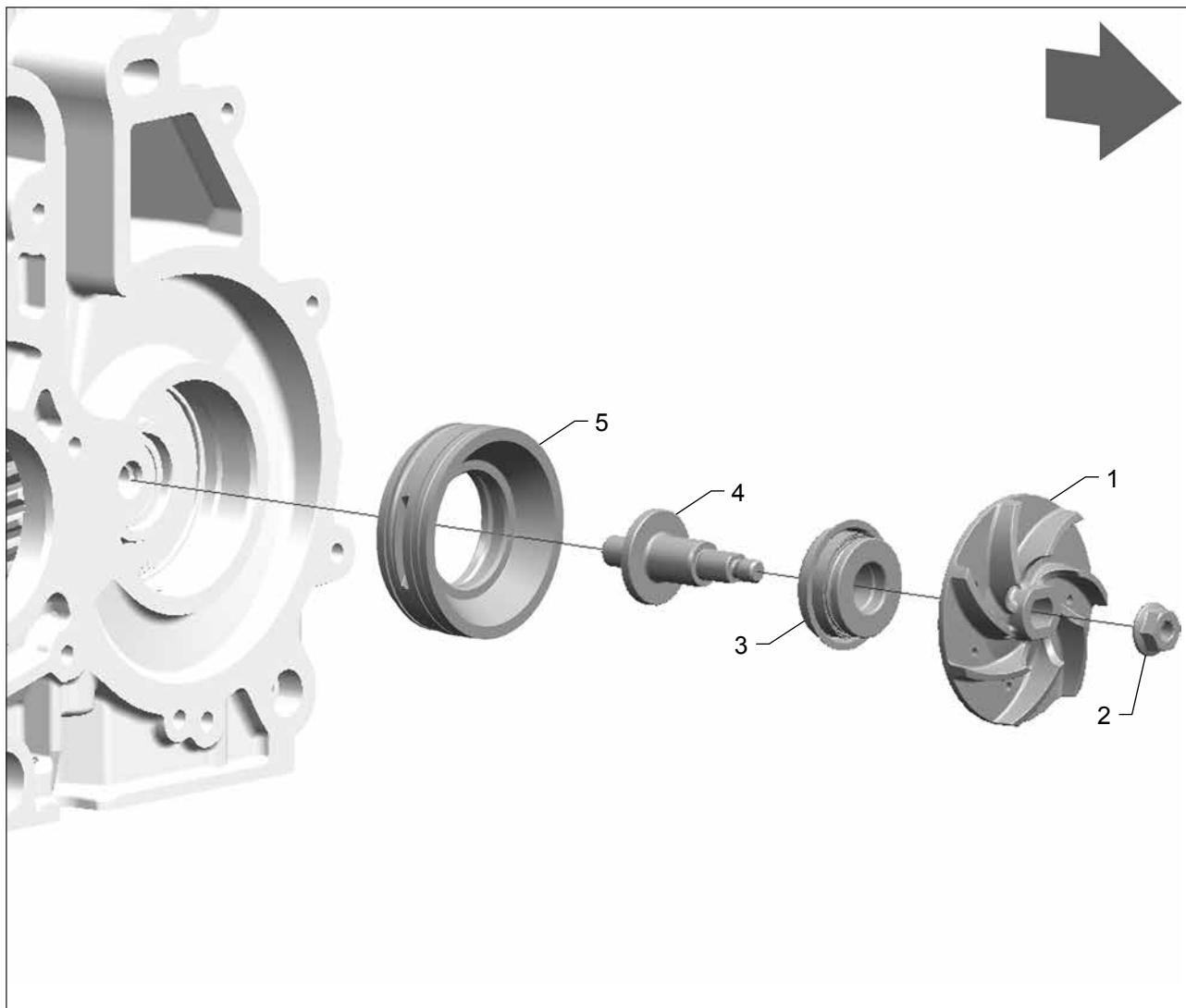
Pos.	Part No	Description	QTY
1	409075	Thermostat Housing	1
2	407603	Fitting Thermostat Housing	1
3	404867	Bolt M6x20 8.8	2
4	100516	O-Ring	(e) 1
5	100150	Thermostat	1
6	407094	Distance Washer	(e) 1
7	402938	Plug M14x1.5	1
8	*	Sensor Coolant Temperature	1

Pos.	Part No	Description	QTY
9	100501	Bolt M6x20 8.8	10
10	403816	Closing Cap	1
11	100471	Hose Clamp 16-27/9	1

* see chapter 080 Engine Management System

(e) replace part (t) thread TufLok coated (m) thread micro encapsulated (p) part is painted
 RAL 9005 (black) RAL9006 (silver-gray) RAL9010 (white)

050.02 COOLANT PUMP

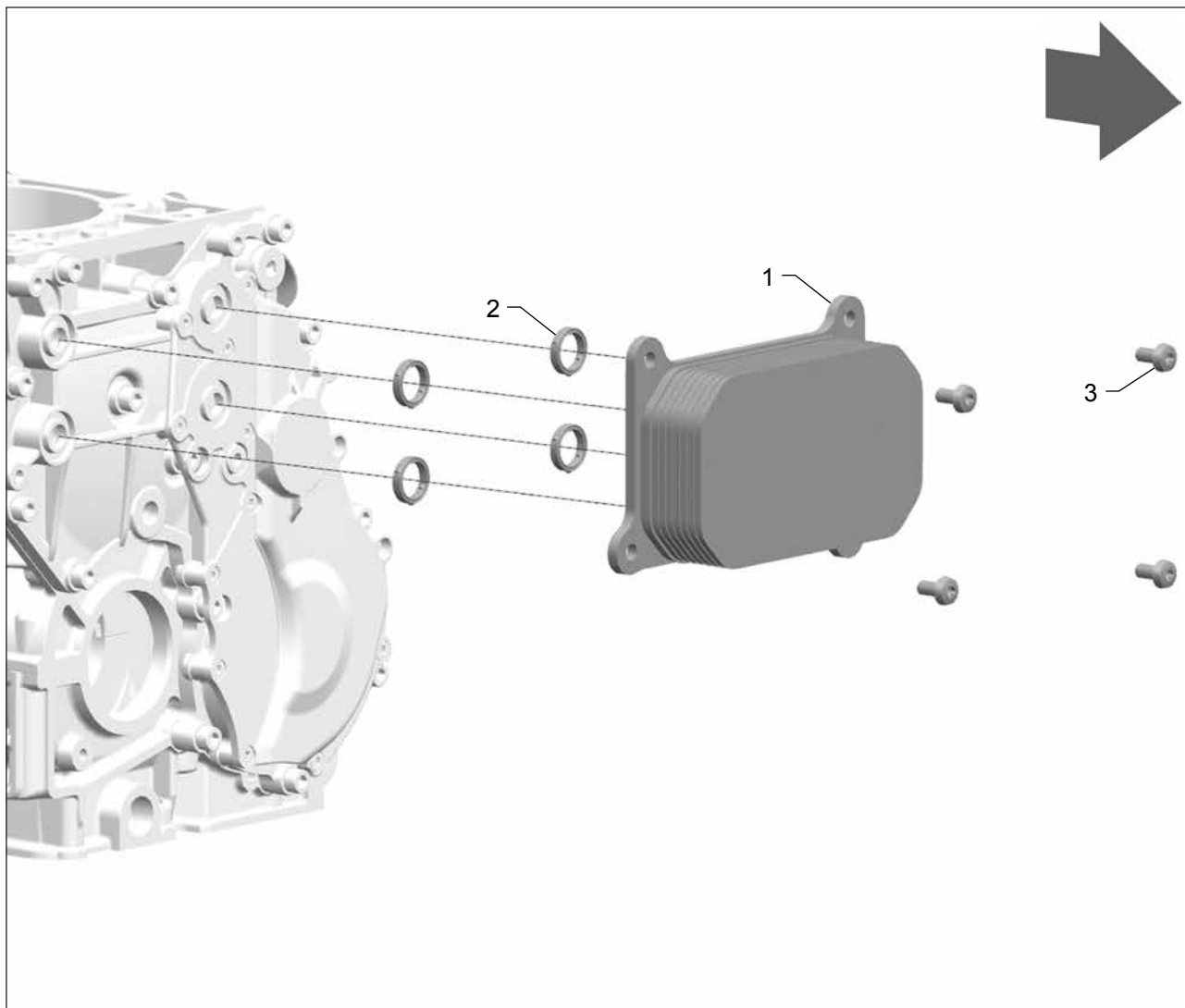


This page is valid for all engine models

Pos.	Part No	Description	QTY
1	406200	Impeller	1
2	102073	Nut M6	1
	409097	Repair Kit Slide Ring Seal (e)	1
The following parts are included in the repair kit:			
3		Slide Ring Seal	1
4		Water Pump Axle	1
5		Sealing Bracket including seals	1

(e) replace part (t) thread TufLok coated (m) thread micro encapsulated (p) part is painted
RAL 9005 (black) RAL9006 (silver-gray) RAL9010 (white)

050.03 OIL COOLER

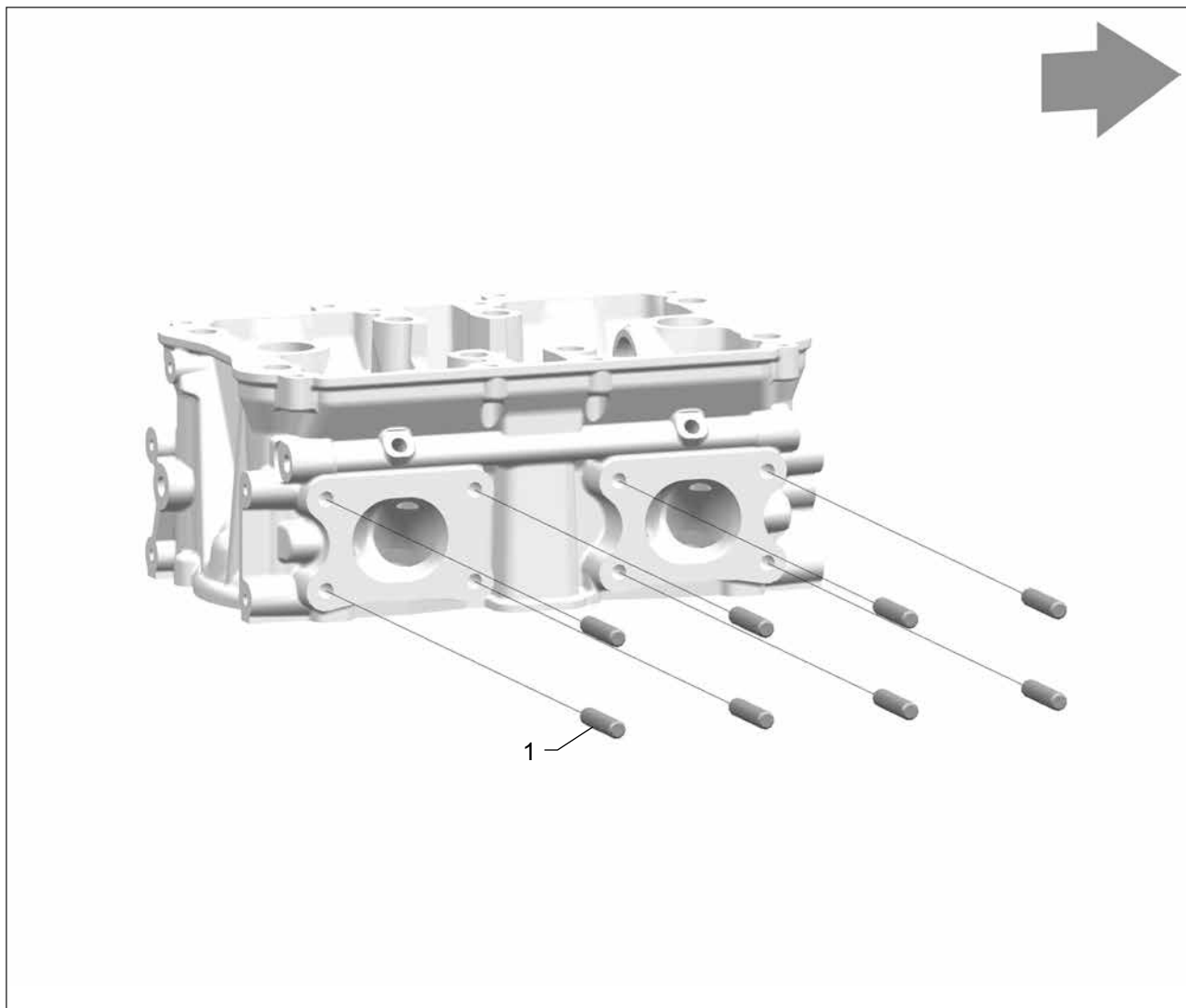


This page is valid for all engine models

Pos.	Part No	Description	QTY
1	404871	Oil Cooler	1
2	404002	Gasket	(e) 4
3	404866	Bolt M6x12 8.8	4

(e) replace part (t) thread TufLok coated (m) thread micro encapsulated (p) part is painted
 RAL 9005 (black) RAL9006 (silver-gray) RAL9010 (white)

060.01 MOUNTING EXHAUST MANIFOLD

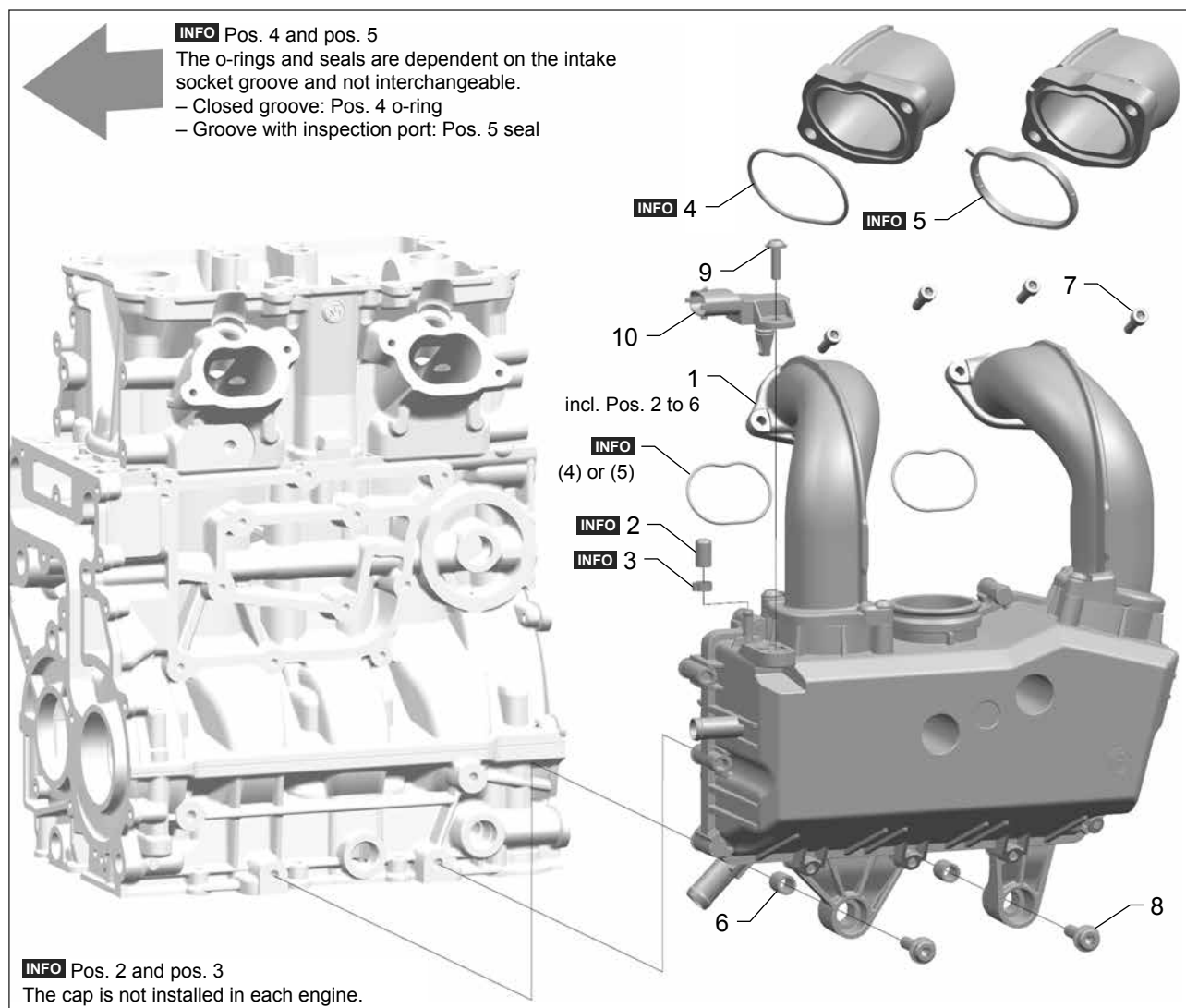


This page is valid for all engine models

Pos.	Part No	Description	QTY
1	102453	Stud M8x38 8.8	8

(e) replace part (t) thread TufLok coated (m) thread micro encapsulated (p) part is painted
 RAL 9005 (black) RAL9006 (silver-gray) RAL9010 (white)

070.01 INTAKE MANIFOLD



This page is valid for all engine models

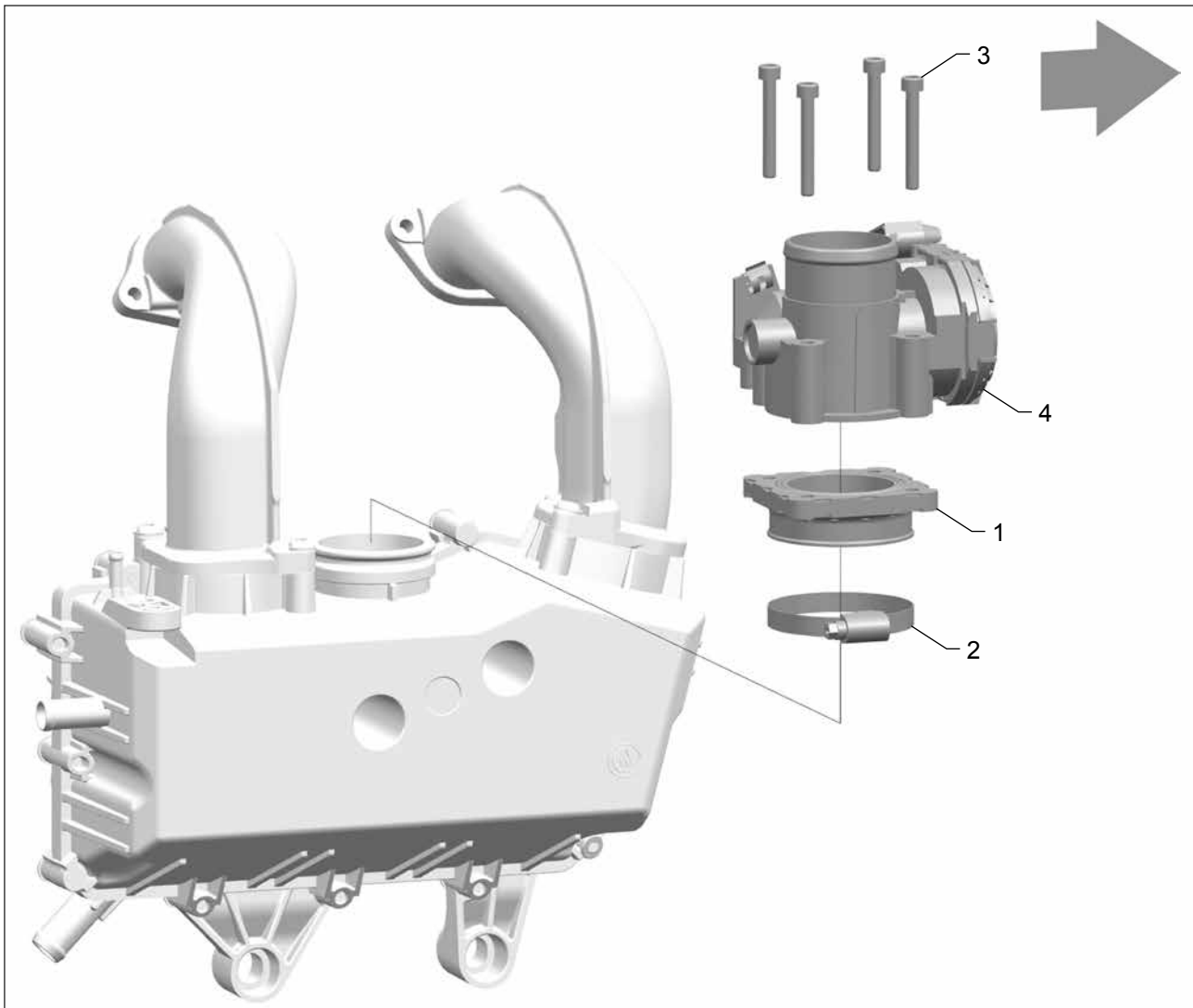
Pos.	Part No	Description	QTY
1	105011	Intake Manifold	1
2	407800	Cap	1
3	101540	Hose Clamp 8.8-10.5/5	(e) 1
4	403158	O-Ring	(e) 2
5	408767	Seal	(e) 2
6	403907	Sleeve	2
7	100501	Bolt M6x20 8.8	4
8	408119	Bolt M8x30 10.9	2

Pos.	Part No	Description	QTY
9	404531	Bolt 6x20	1
10	*	Sensor Intake Manifold Pressure/Temperature	1

* see chapter 080 Engine Management System

(e) replace part (t) thread TufLok coated (m) thread micro encapsulated (p) part is painted
 RAL 9005 (black) RAL9006 (silver-gray) RAL9010 (white)

070.02 MOUNTING THROTTLE BODY



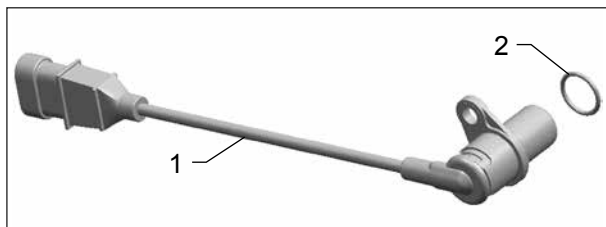
This page is valid for all engine models

Pos.	Part No	Description	QTY
1	403713	Rubber Mount	1
2	100487	Hose Clamp 50-70/9	1
3	100539	Bolt M6x45 8.8	4
4	*	Throttle Body	1

* see chapter 080 Engine Management System

(e) replace part (t) thread TufLok coated (m) thread micro encapsulated (p) part is painted
RAL 9005 (black) RAL9006 (silver-gray) RAL9010 (white)

SENSOR CRANKSHAFT

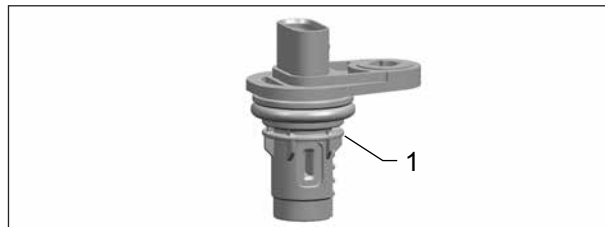


Valid for all engine models

Pos.	Part No	Description	QTY
1	403802	Sensor Crankshaft	1
2	403801	O-Ring	(e) 1

Installation location, see chapter 010.01-3 Crankcase

SENSOR CAMSHAFT

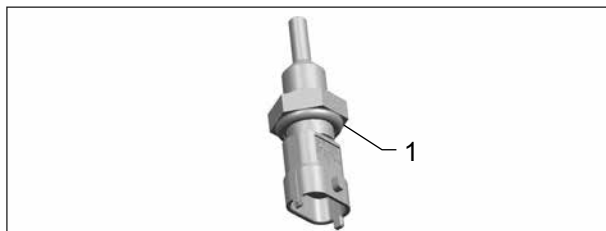


Valid for all engine models

Pos.	Part No	Description	QTY
1	402701	Sensor Camshaft	1

Installation location, see chapter 030.01 Valve Cover

SENSOR COOLANT

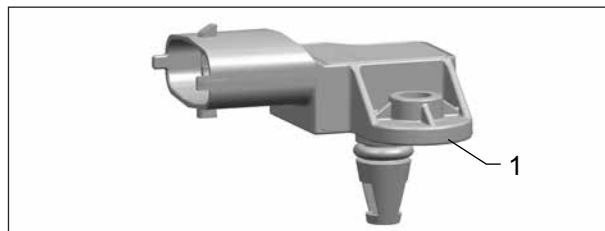


Valid for all engine models

Pos.	Part No	Description	QTY
1	402527	Sensor Temperature	(e) 1
2	410020	Adapter Cable	1

Installation location, see chapter 050.01 Thermostat Housing

SENSOR INTAKE MANIFOLD

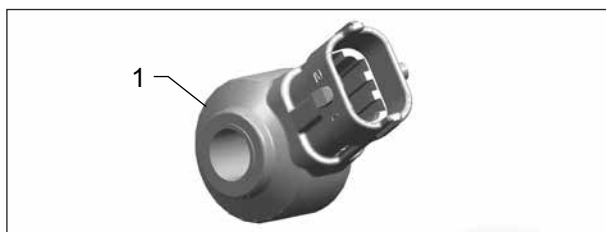


Valid for all engine models

Pos.	Part No	Description	QTY
1	402529	Sensor Pressure/Temperature (NA engine models)	1

Installation location, see chapter 070.01 Intake Manifold

SENSOR KNOCK



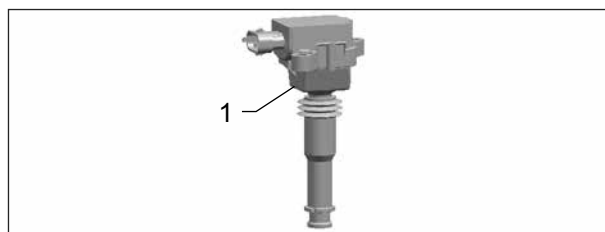
Valid for the following engine models:

– 409135 I2 846 UTV

Pos.	Part No	Description	QTY
1	n/a	Sensor Knock	1

Observe the information in chapter 010.01-3 Crankcase

IGNITION COIL

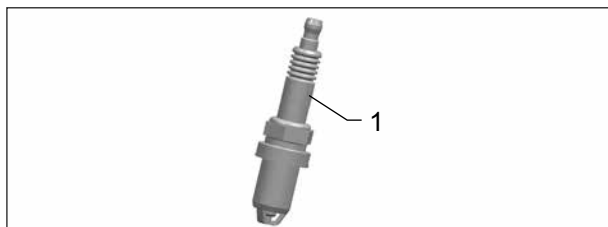


Valid for all engine models

Pos.	Part No	Description	QTY
1	100141	Ignition Coil	2

Installation location, see chapter 030.01 Valve Cover

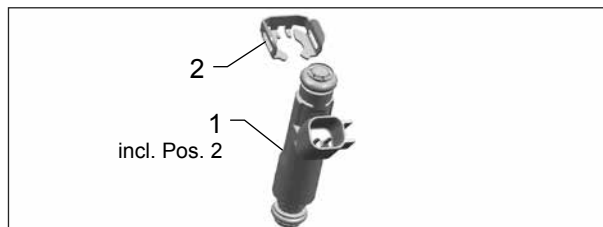
(e) replace part (t) thread TufLok coated (m) thread micro encapsulated (p) part is painted
 RAL 9005 (black) RAL9006 (silver-gray) RAL9010 (white)

SPARK PLUG


Valid for all engine models

Pos.	Part No	Description	QTY
1	104258	Spark Plug RC7PYCBX	2

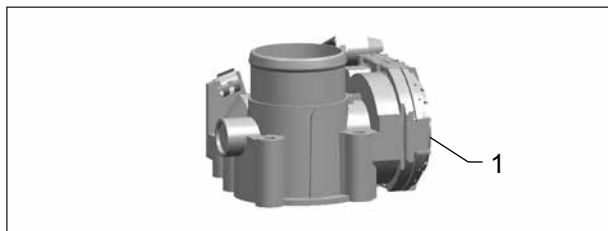
Installation location, see chapter 030.02 Cylinder Head

INJECTOR


Valid for all engine models

Pos.	Part No	Description	QTY
1	403648	Injector (NA engine models)	2
2	407266	Retaining clip	2

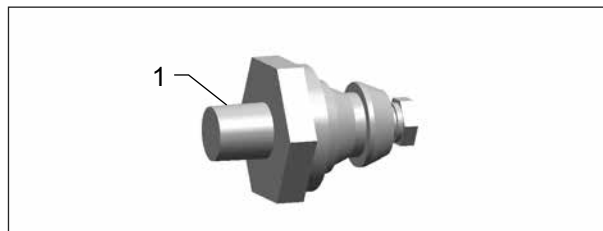
Installation location, see chapter 100.01 Fuel Rail

THROTTLE BODY


Valid for all engine models

Pos.	Part No	Description	QTY
1	406982	Throttle Body	1

Installation location, see chapter 070.02 Throttle Body

SWITCH OIL PRESSURE


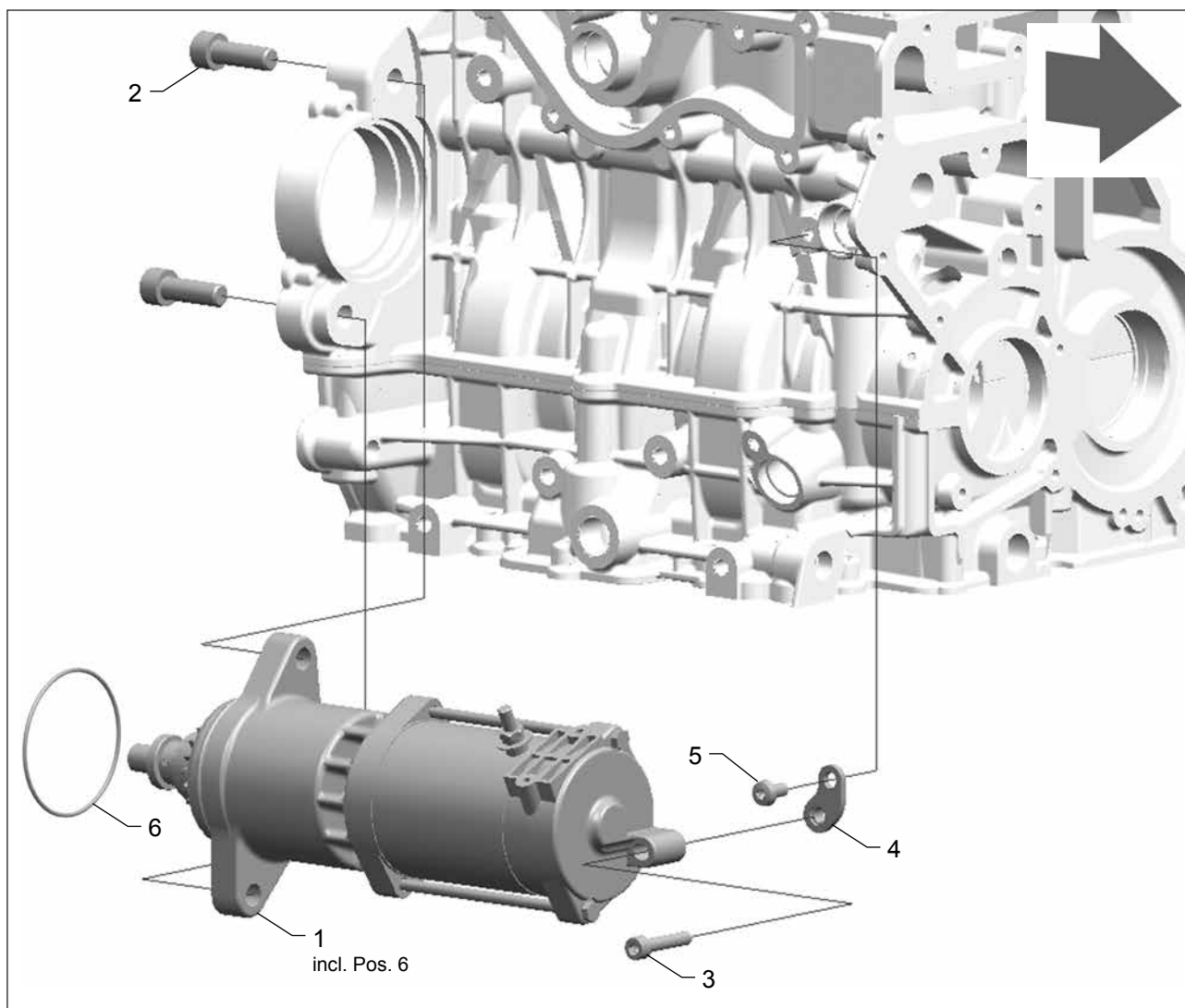
Valid for all engine models

Pos.	Part No	Description	QTY
1	100117	Switch Oil Pressure	1

Installation location, see chapter 030.02 Cylinder Head

(e) replace part (t) thread TufLok coated (m) thread micro encapsulated (p) part is painted
RAL 9005 (black) RAL9006 (silver-gray) RAL9010 (white)

090.01 STARTER

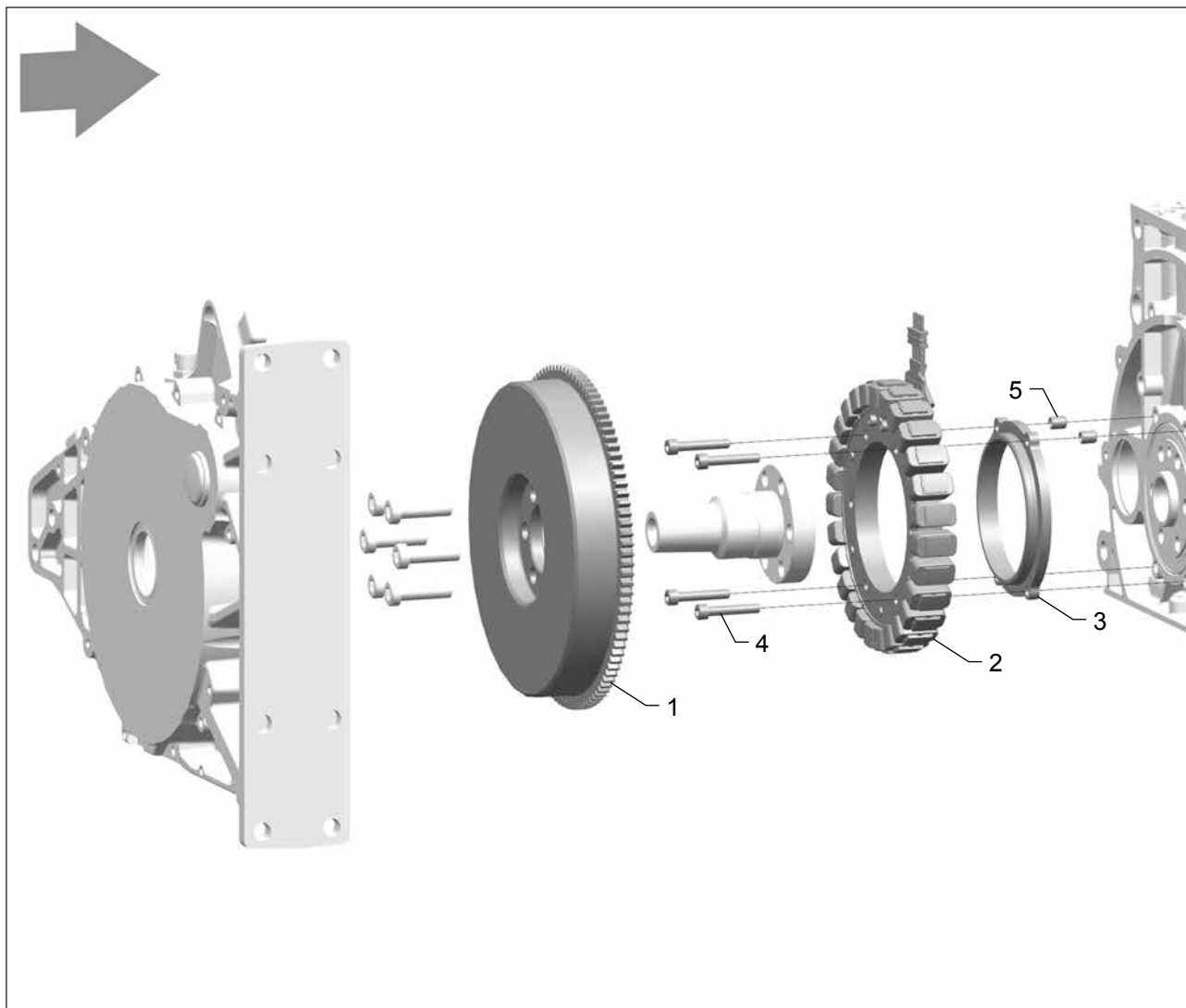


This page is valid for all engine models

Pos.	Part No	Description	QTY
1	406359	Starter	1
2	404906	Bolt M10x30 8.8	2
3	100520	Bolt M6x30 8.8	1
4	406312	Bracket	1
5	404866	Bolt M6x12 8.8	1
6	403606	O-Ring	(e) 1

(e) replace part (t) thread TufLok coated (m) thread micro encapsulated (p) part is painted
 RAL 9005 (black) RAL9006 (silver-gray) RAL9010 (white)

090.02 GENERATOR

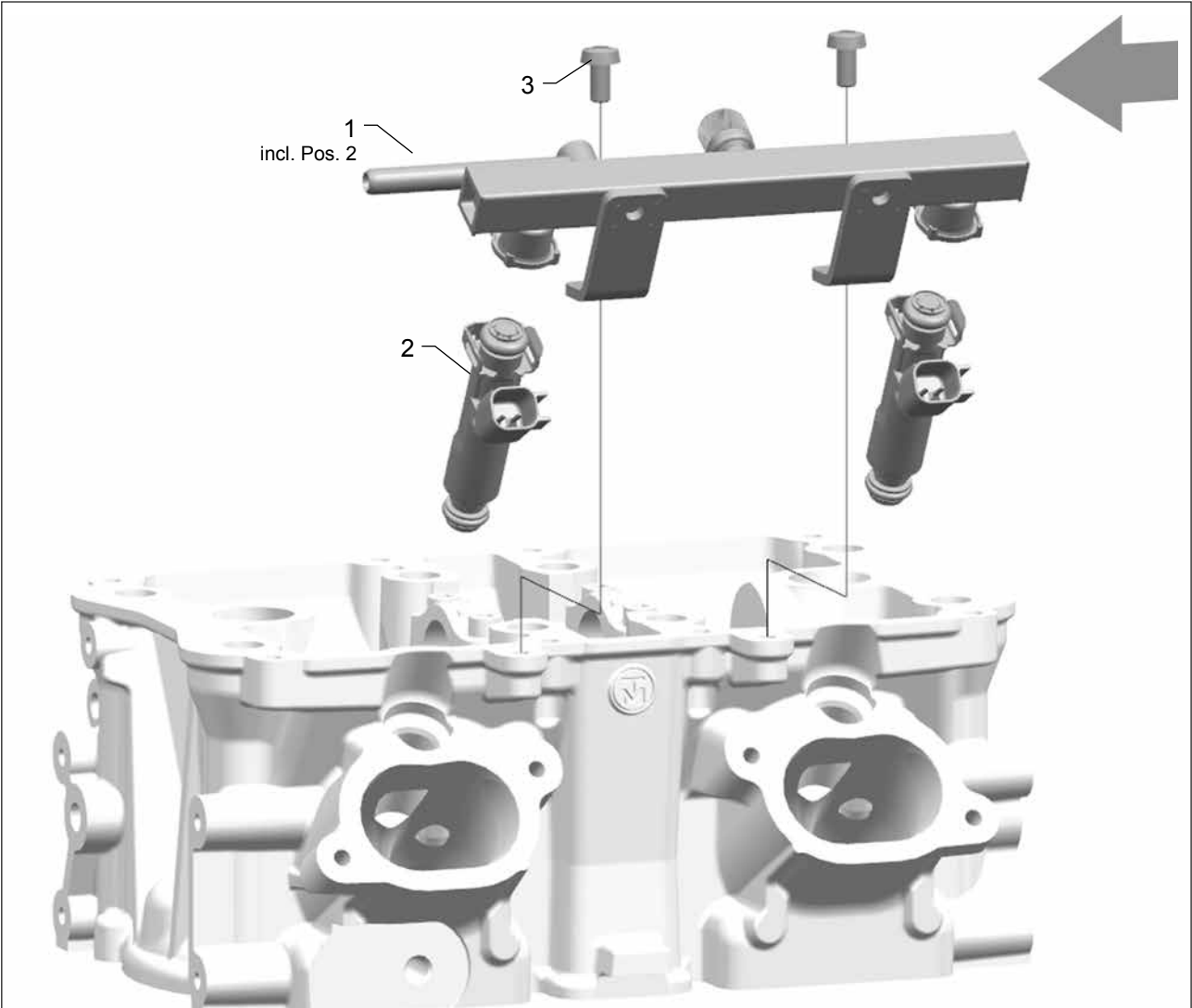


This page is valid for all engine models

Pos.	Part No	Description	QTY
1	406350	Rotor	1
2	406329	Stator	1
3	403396	Distance Washer	1
4	100505	Bolt M6x35 8.8	4
5	100280	Sleeve	2

(e) replace part (t) thread TufLok coated (m) thread micro encapsulated (p) part is painted
 RAL 9005 (black) RAL9006 (silver-gray) RAL9010 (white)

100.01 FUEL RAIL



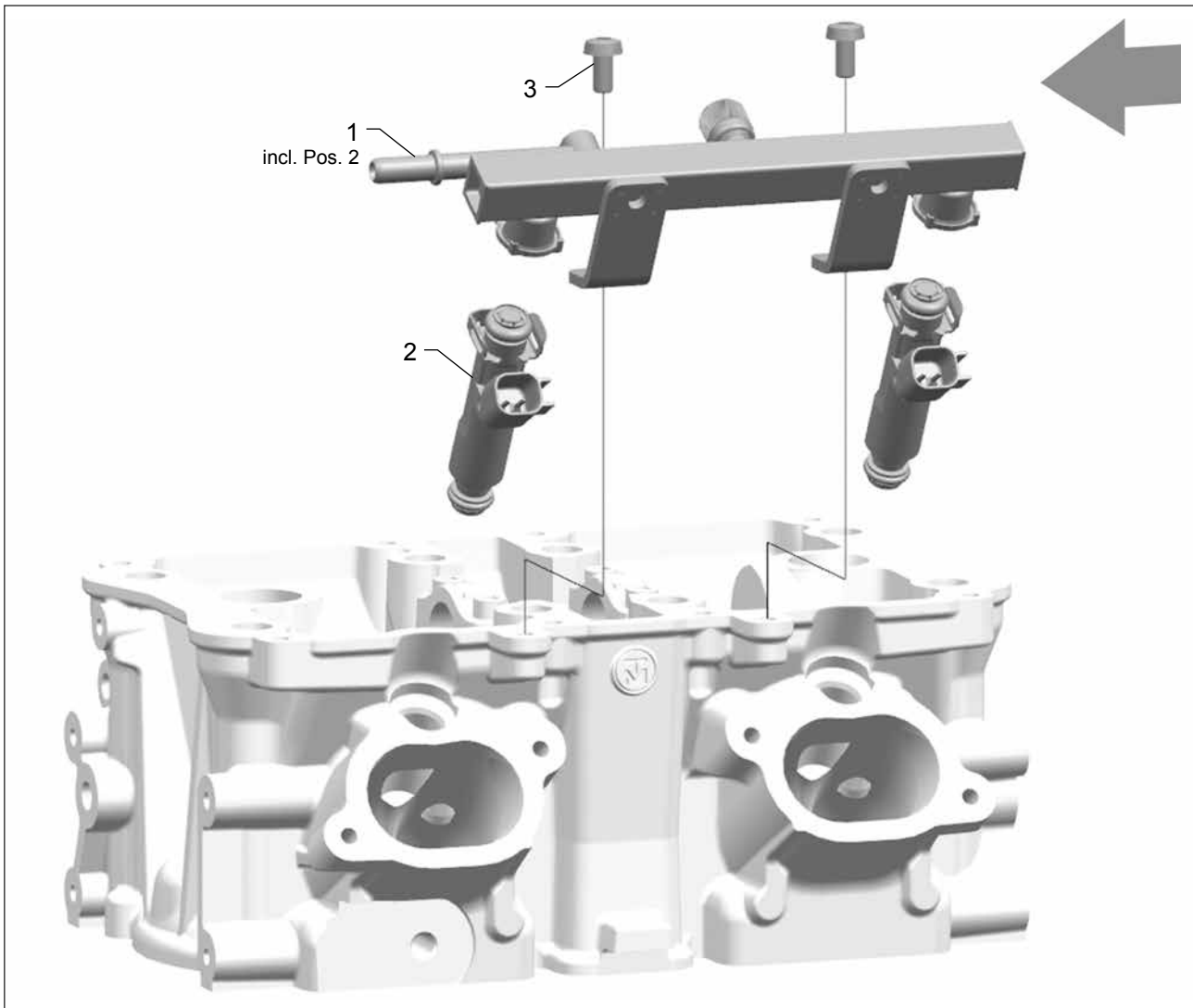
This page is valid for the following engine models:

- 409135 I2 846 UTV
- 411454 I2 846 UTV

Pos.	Part No	Description	QTY
1	403468	Fuel Rail (NA engine models)	1
2	*	Injector	2
3	404866	Bolt M6x12 8.8	2

* see chapter 080 Engine Management System

(e) replace part (t) thread TufLok coated (m) thread micro encapsulated (p) part is painted
RAL 9005 (black) RAL9006 (silver-gray) RAL9010 (white)



This page is valid for the following engine models:

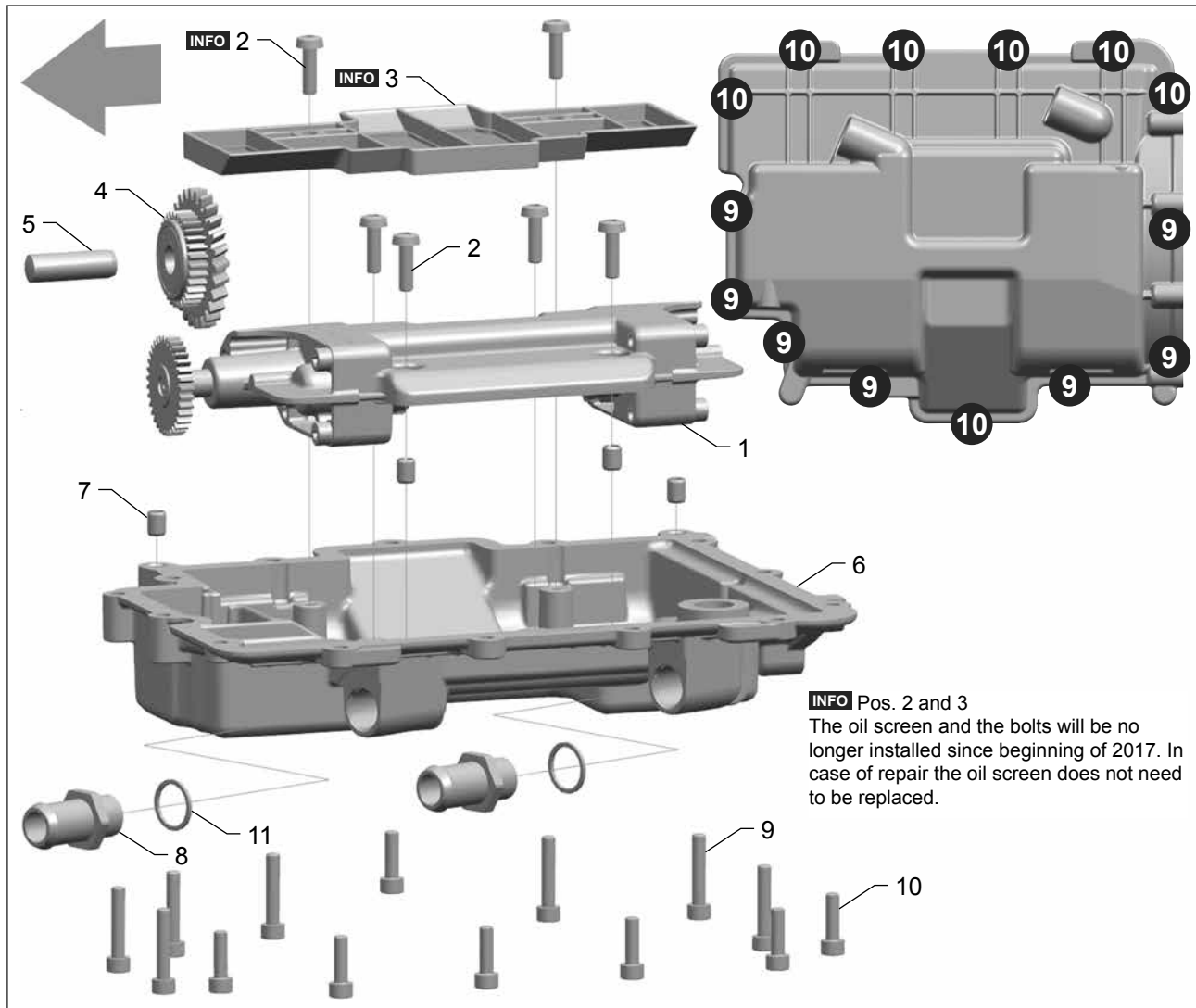
- 410750 I2 846 UTV
- 411457 I2 846 UTV

Pos.	Part No	Description	QTY
1	410542	Fuel Rail (NA engine models)	1
2	*	Injector	2
3	404866	Bolt M6x12 8.8	2

* see chapter 080 Engine Management System

(e) replace part (t) thread TufLok coated (m) thread micro encapsulated (p) part is painted
RAL 9005 (black) RAL9006 (silver-gray) RAL9010 (white)

110.01 DRY SUMP



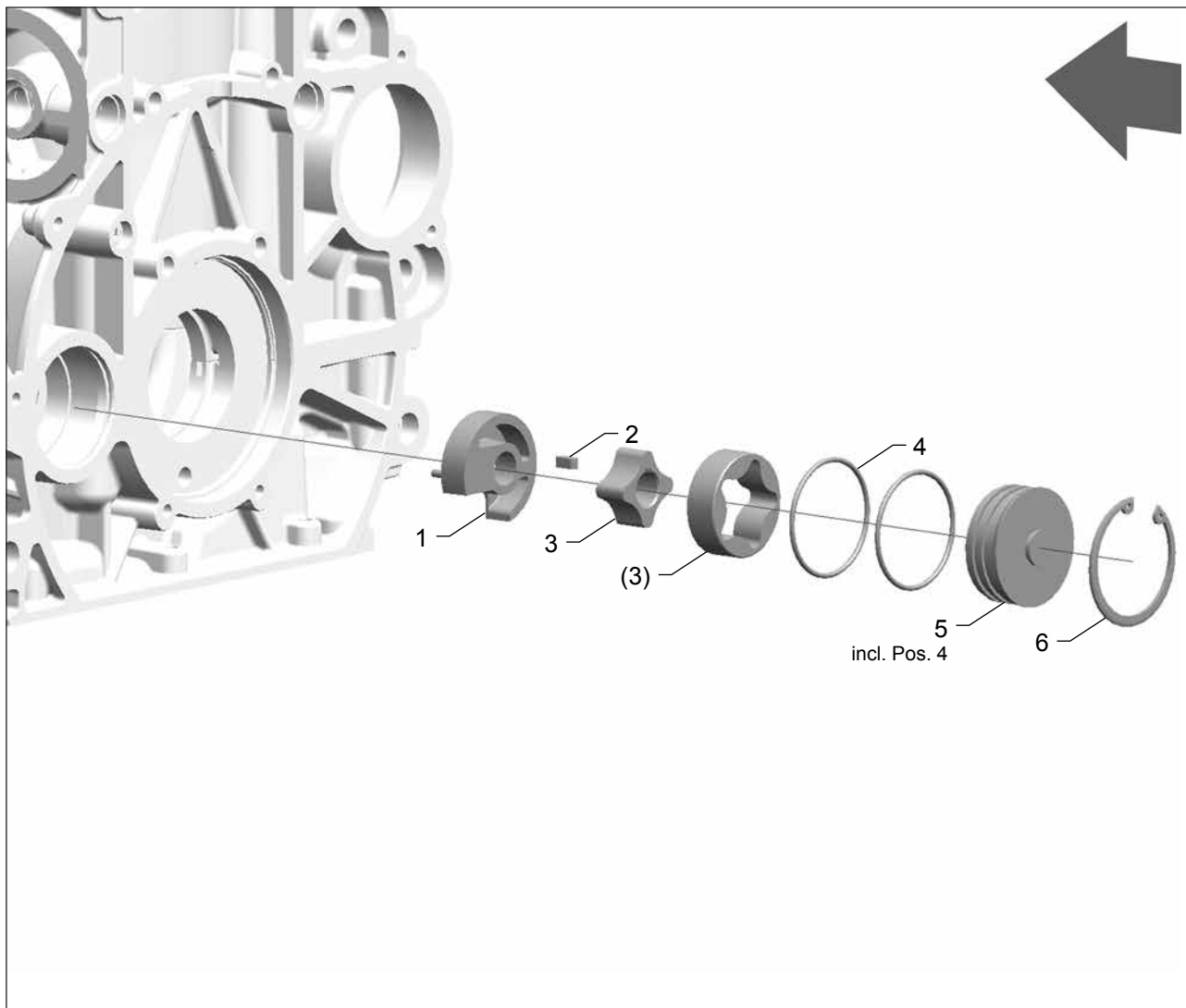
This page is valid for all engine models

Pos.	Part No	Description	QTY
1	406877	Oil Suction Pump	1
2	404867	Bolt M6x20 8.8	4
3	n/a	Oil Screen	1
4	410586	Intermediate Gear Suction Pump	1
5	402727	Axle	1
6	409069	Suction Pump Cover	1
7	100280	Sleeve	4
8	408959	Fitting M18x1.5	2

Pos.	Teilenr.	Bezeichnung	Menge
9	100520	Bolt M6x30 8.8	7
10	100501	Bolt M6x20 8.8	7
11	100454	Seal 18x22x1.5 Al	(e) 2

(e) replace part (t) thread TufLok coated (m) thread micro encapsulated (p) part is painted
 RAL 9005 (black) RAL9006 (silver-gray) RAL9010 (white)

110.02 OIL PRESSURE PUMP

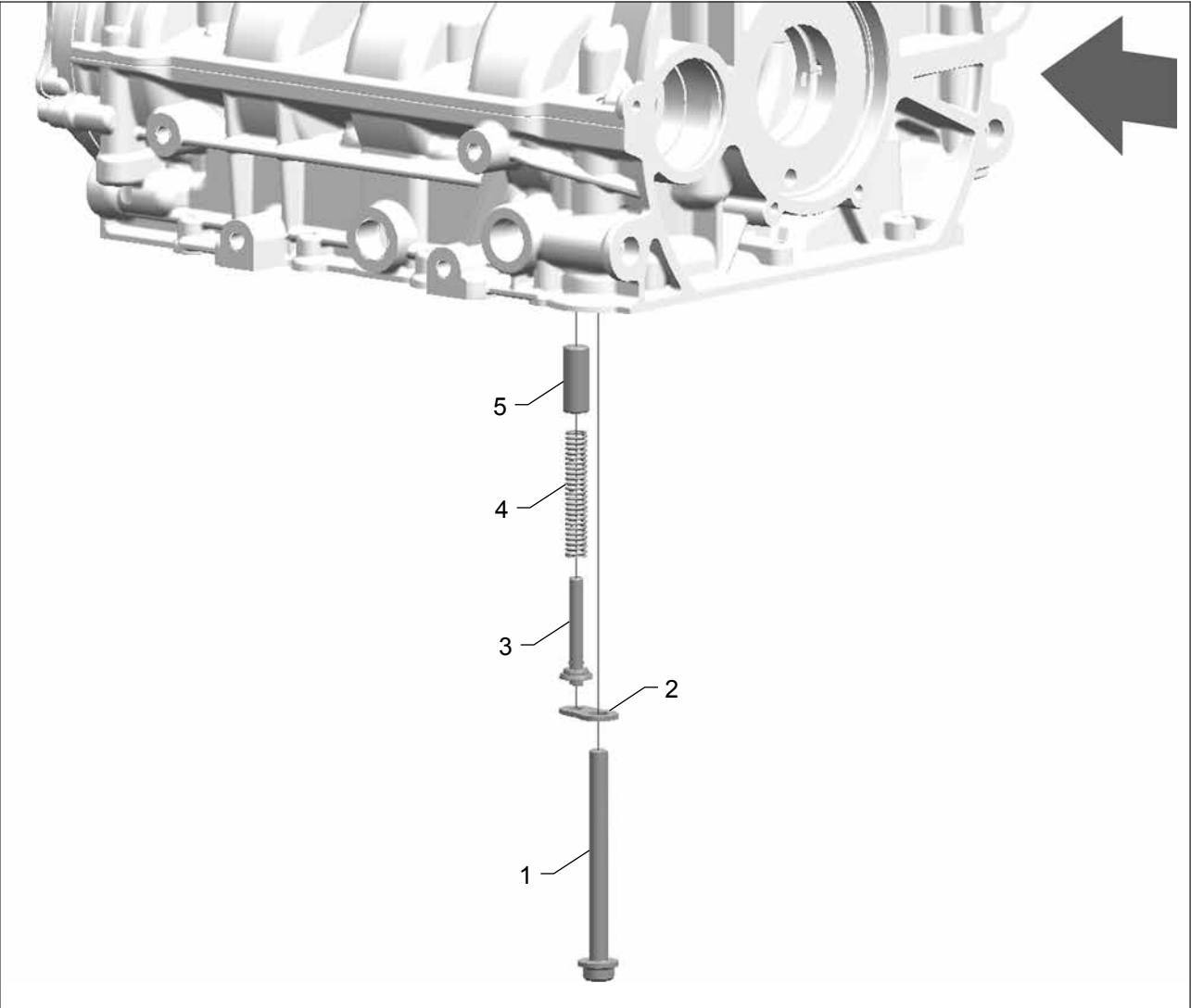


This page is valid for all engine models

Pos.	Part No	Description	QTY
1	100137	Timing Insert	1
2	403197	Key	(e) 1
3	100275	Oil Pump	1
4	102398	O-Ring	(e) 2
5	100792	Oil Pump Cover	1
6	100294	Circlip	1

(e) replace part (t) thread TufLok coated (m) thread micro encapsulated (p) part is painted
 RAL 9005 (black) RAL9006 (silver-gray) RAL9010 (white)

110.03 OIL PRESSURE VALVE



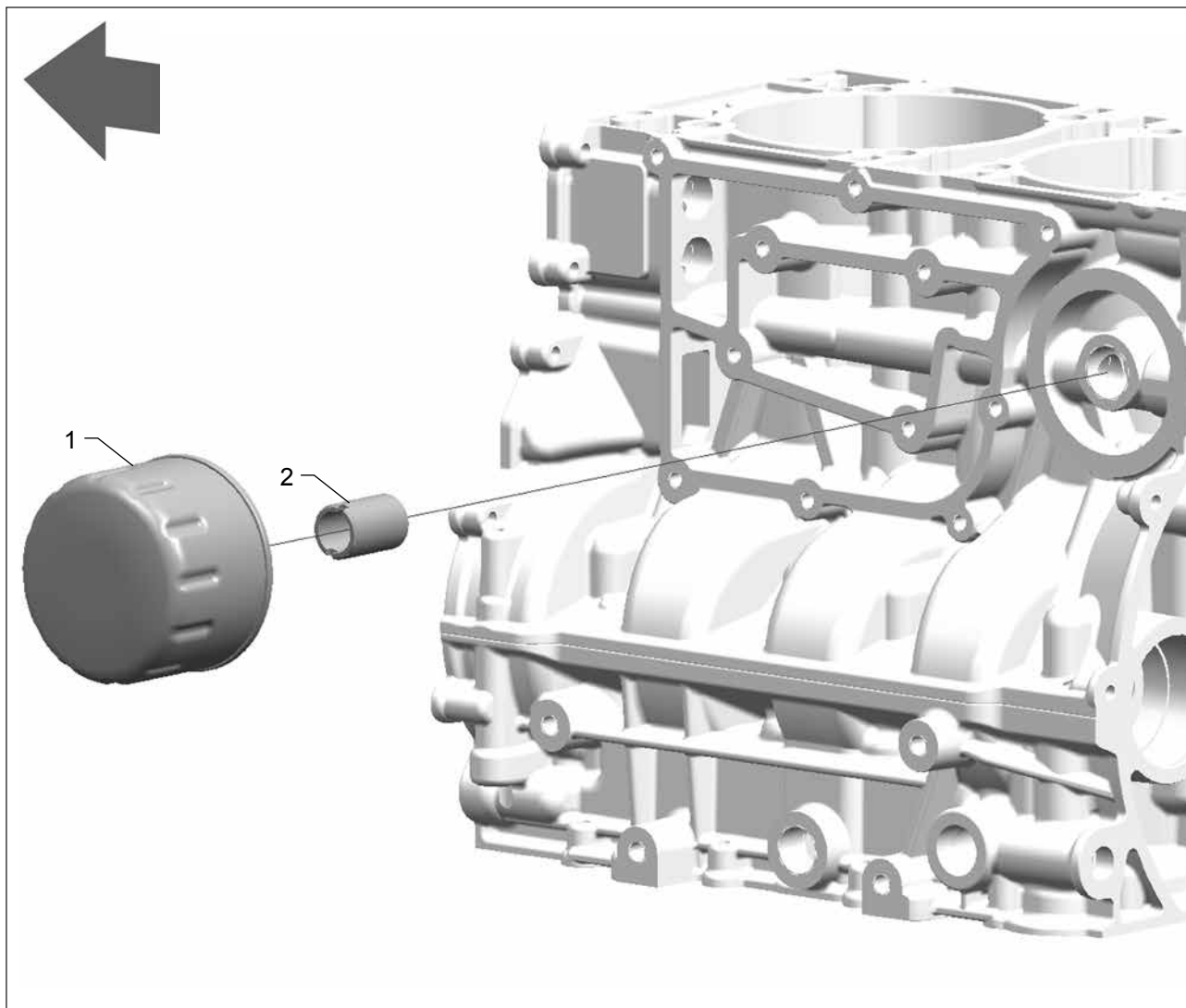
This page is valid for all engine models

Pos.	Part No	Description	QTY
1	*	Bolt	1
	404574	Oil Pressure Valve	1
The following parts are included in the oil pressure valve:			
2		Clamp Plate	1
3		Pin	1
4		Spring	1
5		Oil Pressure Piston	1

* see chapter 010.01-1 Crankcase

(e) replace part (t) thread TufLok coated (m) thread micro encapsulated (p) part is painted
RAL 9005 (black) RAL9006 (silver-gray) RAL9010 (white)

110.04 OIL FILTER

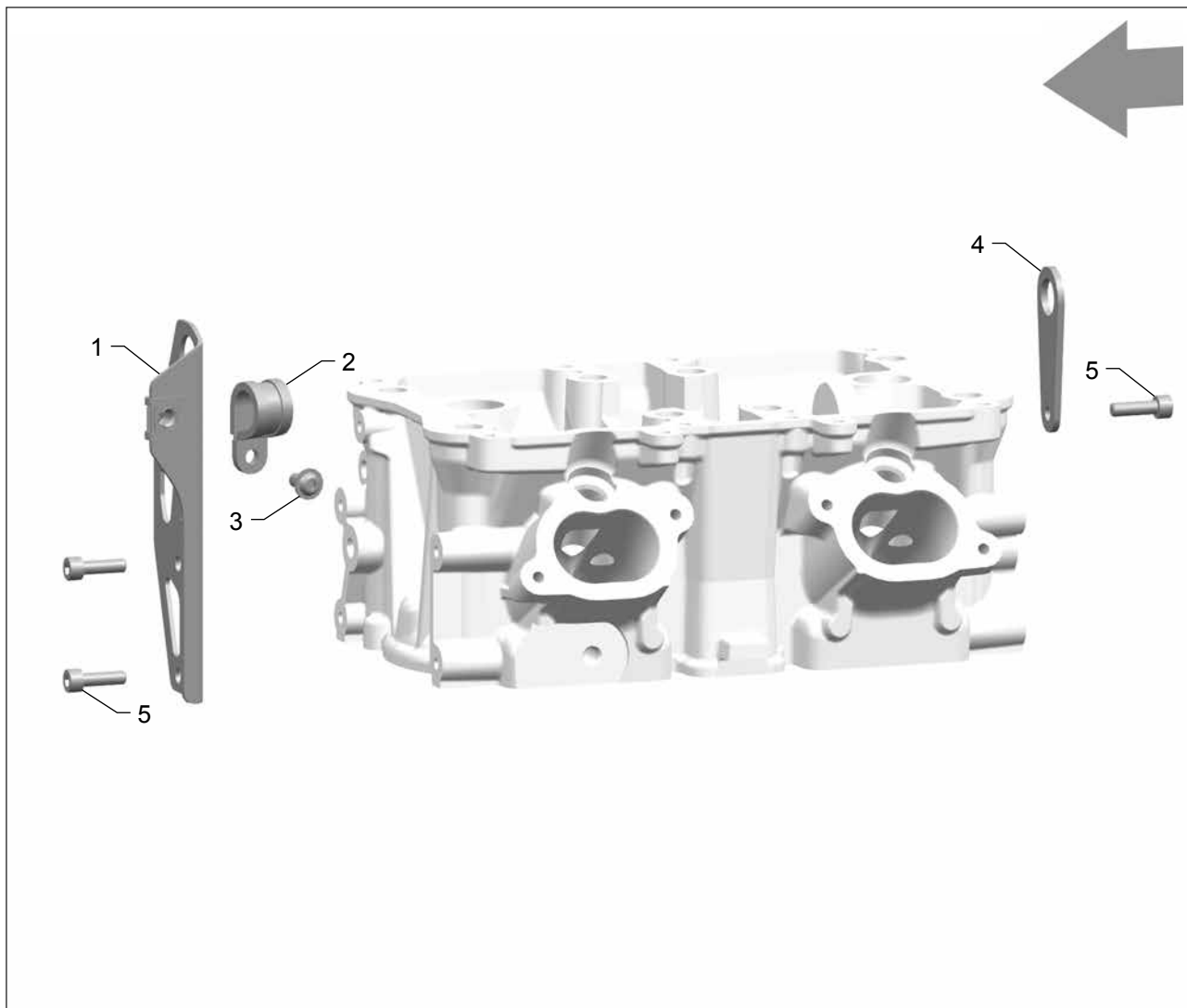


This page is valid for all engine models

Pos.	Part No	Description	QTY
1	105041	Oil Filter	(e) 1
2	401679	Threaded Sleeve M20x1.5	1

(e) replace part (t) thread TufLok coated (m) thread micro encapsulated (p) part is painted
RAL 9005 (black) RAL9006 (silver-gray) RAL9010 (white)

120.01 LIFTING EYE

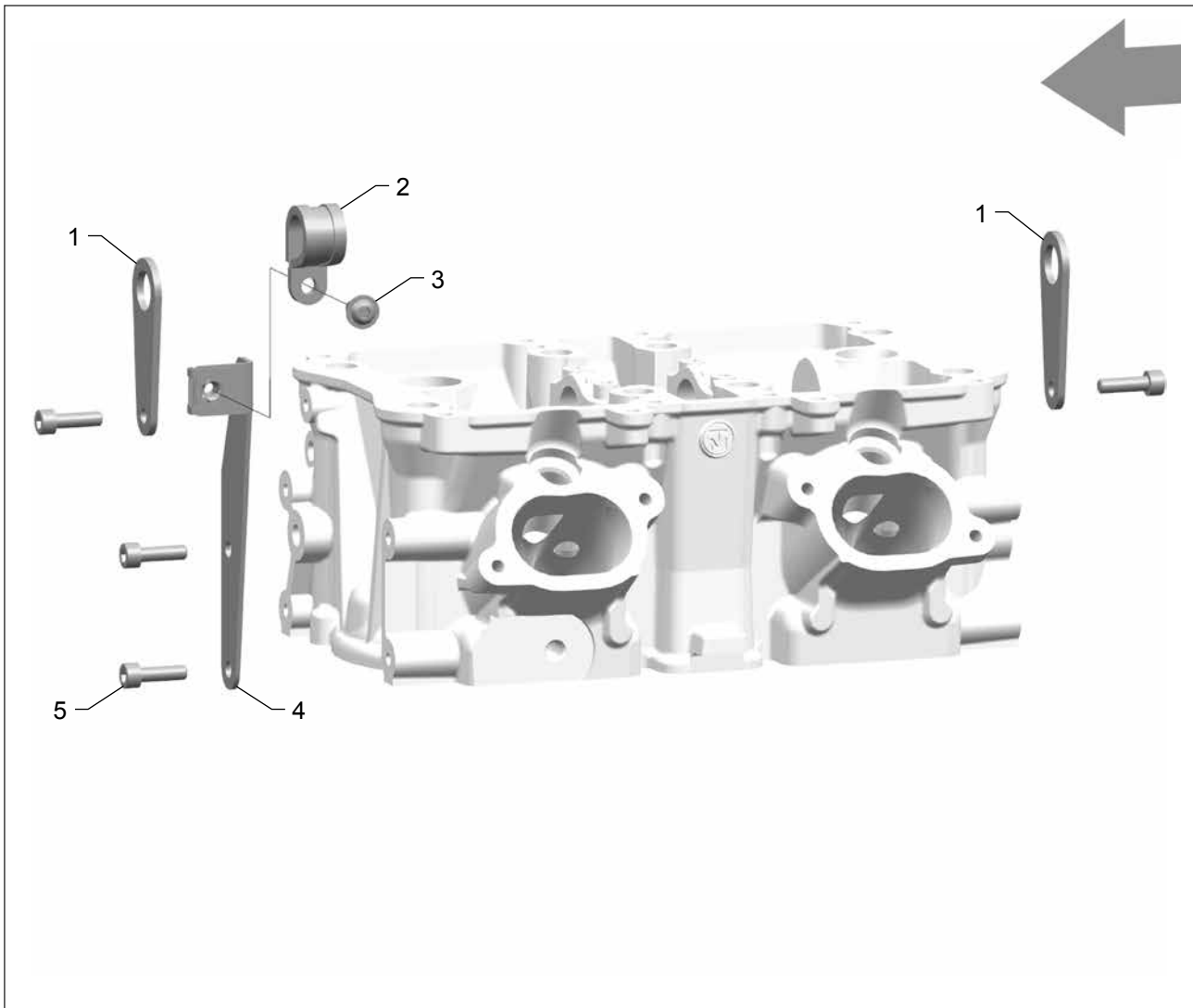


This page is valid for the following engine models:

- 409135 I2 846 UTV
- 411454 I2 846 UTV

Pos.	Part No	Description	QTY
1	404709	Bracket	1
2	404018	Pipe Clamp	1
3	408118	Bolt M6x12 10.9	1
4	403486	Bracket	1
5	100501	Bolt M6x20 8.8	3

(e) replace part (t) thread TufLok coated (m) thread micro encapsulated (p) part is painted
 RAL 9005 (black) RAL9006 (silver-gray) RAL9010 (white)



This page is valid for the following engine models:

- 410750 I2 846 UTV
- 411457 I2 846 UTV

Pos.	Part No	Description	QTY
1	403486	Bracket	2
2	404018	Pipe Clamp	1
3	408118	Bolt M6x12 10.9	1
4	410554	Bracket	1
5	100501	Bolt M6x20 8.8	4

(e) replace part (t) thread TufLok coated (m) thread micro encapsulated (p) part is painted
 RAL 9005 (black) RAL9006 (silver-gray) RAL9010 (white)

900.01 CASES

Outer dimensions: 395 mm x 295 mm x 106 mm
 [15.6 in x 11.6 in x 4.2 in]



SPARE PARTS CASE SYNERJECT

Valid for all engine models

Part No	Description	QTY
105016	Spare Parts Case Synerject NA	1
The following parts are included in the spare parts case:		
403802	Sensor Crankshaft	1
402701	Sensor Camshaft	1
402529	Sensor Pressure/Temperature	1
402527	Sensor Temperature	(e) 1
101884	Ignition Coil	2
403648	Injector	2

SERVICE CASE MPE 850/MPE 1000

Valid for all engine models

Part No	Description	QTY
410163	Service Case	1
The following parts are included in the service case:		
105041	Oil Filter	(e) 4
104258	Spark Plug RC7PYCBX	4
104961	Sealing Kit Valve Cover	(e) 2
103136	Serrated Lock Washer	(e) 6
102050	Valve Adjustment Shim 2.85mm	1
102051	Valve Adjustment Shim 2.90mm	1
102029	Valve Adjustment Shim 2.95mm	1
102030	Valve Adjustment Shim 3.00mm	1
102052	Valve Adjustment Shim 3.05mm	1
102031	Valve Adjustment Shim 3.10mm	1
102032	Valve Adjustment Shim 3.15mm	1
102033	Valve Adjustment Shim 3.20mm	1
102034	Valve Adjustment Shim 3.25mm	1
102053	Valve Adjustment Shim 3.30mm	1
102035	Valve Adjustment Shim 3.35mm	1
	Feeler Gauge 0.05 - 2mm	1

TOOL BOX MPE 850/MPE 1000

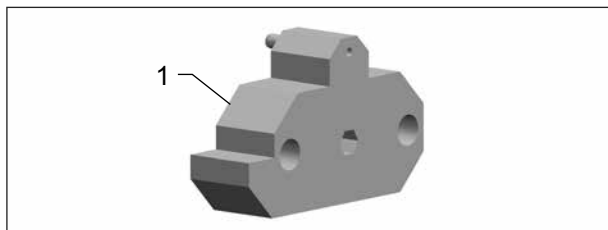
Valid for all engine models

Part No	Description	QTY
105151	Tool Box	1
The following parts are included in the tool box:		
	Chain Braking Tool	1
	Locking Tool Crankshaft	1
	TDC-Adjusting Tool	1
	Installation Spike Valve Stem Seal	1
	Pin Punch Axle Intermediate Gear	1
	Remover Bearing Cap	1
	Assembling Kit Slide Ring Seal	1
	Assembling Kit Oil Seal Crankshaft	1
	Assembling Kit Oil Seal Hand-start	1

(e) replace part (t) thread TufLok coated (m) thread micro encapsulated (p) part is painted
 RAL 9005 (black) RAL9006 (silver-gray) RAL9010 (white)

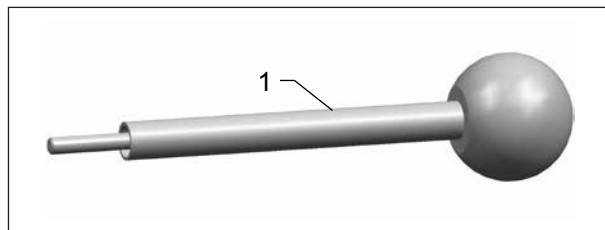
900.02 SPECIAL TOOLS

TDC-ADJUSTING TOOL



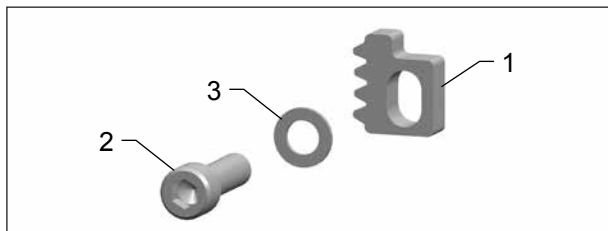
Pos.	Part No	Description	QTY
1	405877	TDC-Adjusting Tool	1

INSTALLATION SPIKE VALVE STEM SEAL



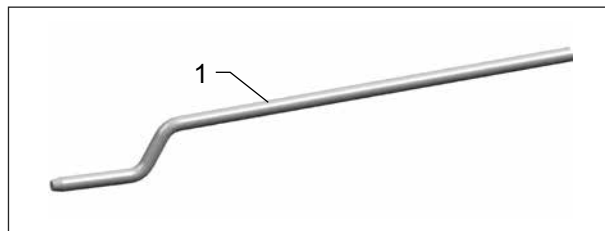
Pos.	Part No	Description	QTY
1	103609	Installation Spike Valve Stem Seal	1

LOCKING TOOL CRANKSHAFT



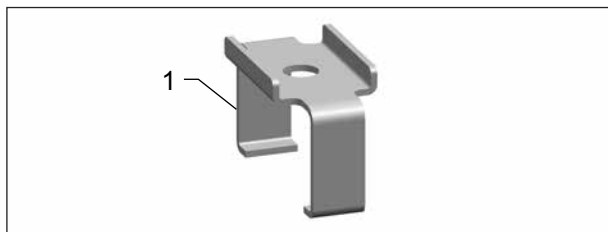
Pos.	Part No	Description	QTY
1	405865	Locking Tool	1
2	102282	Bolt M10x35 8.8	1
3	101682	Washer	1

PIN PUNCH AXLE INTERMEDIATE GEAR



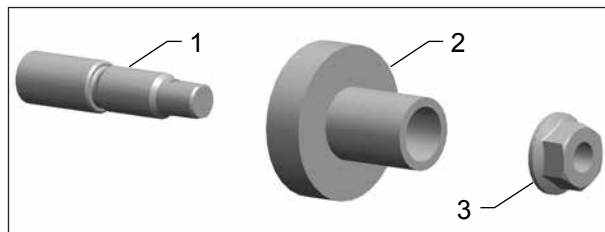
Pos.	Part No	Description	QTY
1	105023	Pin Punch	1

REMOVER BEARING CAP



Pos.	Part No	Description	QTY
1	406389	Remover Bearing Cap	1

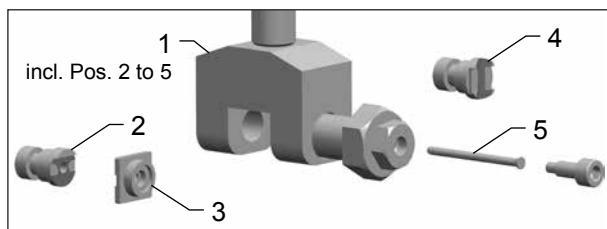
ASSEMBLING KIT SLIDE RING SEAL



Pos.	Part No	Description	QTY
1	405935	Guide	1
2	405936	Sliding Sleeve	1
3	100164	Nut M10 8.8	1

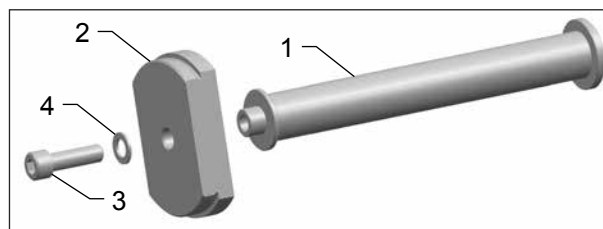
(e) replace part (t) thread TufLok coated (m) thread micro encapsulated (p) part is painted
RAL 9005 (black) RAL9006 (silver-gray) RAL9010 (white)

CHAIN TOOL

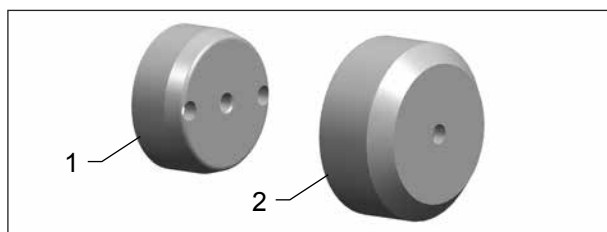


Pos.	Part No	Description	QTY
1	408331	Chain Tool	1
2	408282	Counterpart Break	1
3	408283	Thrust Piece	1
4	408280	Counterpart Rivet	1
5	401383	Spike	1

CYLINDER LINER REMOVAL TOOL



Pos.	Part No	Description	QTY
1	410574	Punch adapter	1
2	410573	Punch D89	1
3	102282	Bolt M10x35 8.8	1
4	101682	Washer	1

ASSEMBLING KIT
OIL SEAL CRANKSHAFT


Pos.	Part No	Description	QTY
1	404621	Guiding Sleeve	1
2	405854	Sliding Sleeve	1

(e) replace part (t) thread TufLok coated (m) thread micro encapsulated (p) part is painted
 RAL 9005 (black) RAL9006 (silver-gray) RAL9010 (white)

Revision	Date	Chapter	Pos.	Description
Rev A	25.04.2016	–	–	First edition spare parts catalog
Rev B	18.04.2017	–	–	The engine model 410750 I2 846 UTV was added. The spare parts catalog is valid for both engine models.
Rev B	18.04.2017	010.01-1, 010.01-2, 010.01-3 Crankcase	–	Several plugs 100650 were replaced by 408967.
Rev B	18.04.2017	010.03 Generator cover	4	The vent plug 403972 was replaced by 410302.
Rev B	18.04.2017	010.03 Generator cover	4	The generator cover is only available from the vehicle manufacturer.
Rev B	18.04.2017	020.01 Crank drive	3	The balance shaft 404779 was replaced by 410212.
Rev B	18.04.2017	030.01 Valve cover	1	The valve cover 104987 was replaced by 410798. Only modified scope of supply.
Rev B	18.04.2017	080 Engine management system; 010.01-3 Crankcase	–	The knock sensor 407798 and a bolt 408118 are omitted. Observe the information in chapter 010.01-3 Crankcase.
Rev B	18.04.2017	100.01 Fuel rail	–	The fuel rail 410542 was added for the engine model 410750.
Rev B	18.04.2017	110.01 Dry sump	4	The intermediate gear suction pump 401428 was replaced by 410586.
Rev B	18.04.2017	110.01 Dry sump	3	The oil screen 100195 and two bolts 404867 are omitted. Observe the information in chapter 110.01 Dry sump.
Rev B	18.04.2017	120.01 Lifting eye	–	A bracket 410554 was added for the engine model 410750.
Rev B	18.04.2017	900.02 Special tools	–	The TEXTRON MOTORS Cylinder liner removal tool is a new special tool.
Rev C	04.12.2017	020.01 Crankshaft	1	The crankshaft 402946 was replaced by 411121.
Rev C	04.12.2017	030.01 Valve cover	3	The engine badge 409014 is no longer available as a spare part.
Rev C	04.12.2017	040.01 Camshaft	2, 3, 10	The timing chain 408035 was replaced by 410103. The chain link 408219 is no longer available. Observe the information in chapter 040.01 Camshaft.
Rev D	08.02.2018	–	–	The engine models 411454 I2 846 UTV and 411457 I2 846 UTV were added.
Rev D	08.02.2018	010.02-1 Oil cooler bracket	1	The oil cooler bracket 410060 was replaced by 410613.
Rev D	08.02.2018	010.03 Generator cover	–	The generator cover is now available from the engine manufacturer.
Rev D	08.02.2018	040.02 Rocker Arms	1, 2	The rocker arms 402665 were replaced by 411427. The rocker arms 402667 were replaced by 411428.
Rev D	08.02.2018	050.01 Thermostat housing	1	The thermostat housing 408292 was replaced by 409075.

A

Assembling Kit Oil Seal Crankshaft 40
Assembling Kit Slide Ring Seal 39

B

Balance Shaft 12
Bearing Shell, Balance Shaft 12
Bearing Shell, Con-Rod 12
Bearing Shell, Main Bearing 12

C

Camshaft 17
Centering Pin 6
Chain Guide 17
Chain Rail 17
Chain Tensioner 17
Chain Tool 40
Collet Valve 19
Con-Rod 12
Con-Rod Bolt 12
Cover, Crankshaft 14
Crankcase 6
Crankshaft 12
Cross Bar 18
Cylinder Head 16
Cylinder Head Gasket 16
Cylinder Liner 7
Cylinder Liner Removal Tool 40

D

Distance Washer 29

E

Exhaust Valve 19

F

Fuel Rail 30, 31

G

Generator Cover 11

I

Ignition Coil 15, 26
Impeller 21
Injector 27, 30, 31
Installation Spike Valve Stem Seal 39
Intake Manifold 24
Intake Manifold Bracket 24
Intake Valve 19
Intermediate Gear Suction Pump 32

L

Locking Tool Crankshaft 39

O

Oil Cooler 22
Oil Cooler Bracket 9
Oil Filter 35
Oil Nozzle 6
Oil Pressure Valve 6, 34
Oil Pump 33
Oil Pump Cover 33
Oil Screen 32
Oil Seal 7, 11
Oil Suction Pump 32

P

Pin Punch Axle Intermediate Gear 39
Piston 12

R

Remover Bearing Cap 39
Rocker Arm 18
Rocker Axle 18
Rotor 29
Rubber Mount 25

S

Sealing Bracket, Repair Kit 21
Sealing Kit Valve Cover 15
Sensor Camshaft 15, 26
Sensor Coolant Temperature 20, 26
Sensor Crankshaft 8, 26

Sensor Intake Manifold Pressure/Temperature

24, 26

Sensor Knock 8, 26

Service Case 38

Slide Ring Seal, Repair Kit 21

Spare Parts Case 38

Spark Plug 16, 27

Spring Cup 19

Spring Pad 19

Starter 28

Stator 29

Stub Shaft 13

Stud 23

Suction Pump Cover 32

Switch Oil Pressure 16, 27

T

TDC-Adjusting Tool 39

Thermostat 20

Thermostat Housing 20

Throttle Body 25, 27

Tie Rod 6

Timing Chain 17

Timing Insert 33

Tool Box 38

V

Valve Adjustment Shim 19

Valve Cover 15

Valve Spring 19

Valve Stem Seal 19

W

Water Pump Axle, Repair Kit 21



TEXTRON MOTORS GmbH

Daimlerstraße 5

88677 Markdorf

Germany

WWW.TEXTRONMOTORS.COM